





Irrigated field

SCALE @ APPROX
1" = 1320 FT.

-  Misc. Transportation
-  Railroads
-  Roads and Trails
-  Waterways



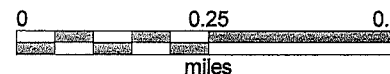
WELL LOCATION
 $045^{\circ} 29' 56.046 N$
 $118^{\circ} 59' 23.423 W$
 NO. L46663

LEGAL DESCRIPTION
 NW 1/4 SECTION 7
 NW 1/4 OF NW 1/4 SECTION 7

RECEIVED

DEC 31 2009

WATER RESOURCES DEPT
 SALEM, OREGON

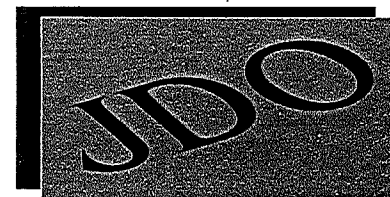


WELL LOCATED FROM
 NW CORNER SECTION 7
 1940 FT. EAST
 890 FT. SOUTH

15 31 E
 TAX Lot 1000

G-17296

G-17296



G-17296



Herb Mosgar

From: Jonnine Skaug
Sent: Thursday, January 07, 2010 6:44 AM
To: Herb Mosgar
Subject: FW: GW Application

Jonnine Skaug
Water Rights/Adjudication Division
OR Water Resources Department
725 Summer Street NE, Suite A
Salem, OR 97301
phone: 503-986-0807
fax: 503-986-0901

From: John Owen [mailto:jeowen@hughes.net]
Sent: Wednesday, January 06, 2010 3:30 PM
To: Jonnine Skaug
Subject: RE: GW Application

Herb, I looked over the change to the map and everything looks fine.

John Owen

From: Jonnine Skaug [mailto:skaugj@wrdd.state.or.us]
Sent: Wednesday, January 06, 2010 12:52 PM
To: jeowen@hughes.net
Cc: Herb Mosgar
Subject: GW Application

Hi John,

attached you will find the information Herb asked me to send to you.
Please contact Herb if you have any questions.

thank you,





Jonnine Skaug
Water Rights/Adjudication Division
OR Water Resources Department
725 Summer Street NE, Suite A
Salem, OR 97301
phone: 503-986-0807
fax: 503-986-0901

E-mail message checked by Spyware Doctor (7.0.0.508)
Database version: 6.14070
<http://www.pctools.com/spyware-doctor-antivirus/>

G-17296

1/7/2010

Irrigated field

-  Misc. Transportation
-  Railroads
-  Roads and Trails
-  Waterways

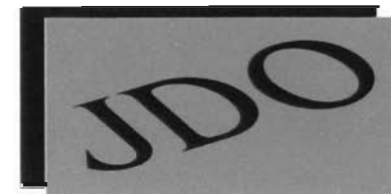
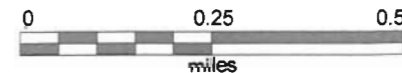
WELL LOCATION
 045° 29' 56.046 N
 118° 59' 23.423 W
 NO. L46663

LEGAL DESCRIPTION
 NW 1/4 SECTION 7
 NW 1/4 OF NE 1/4 SECTION 7

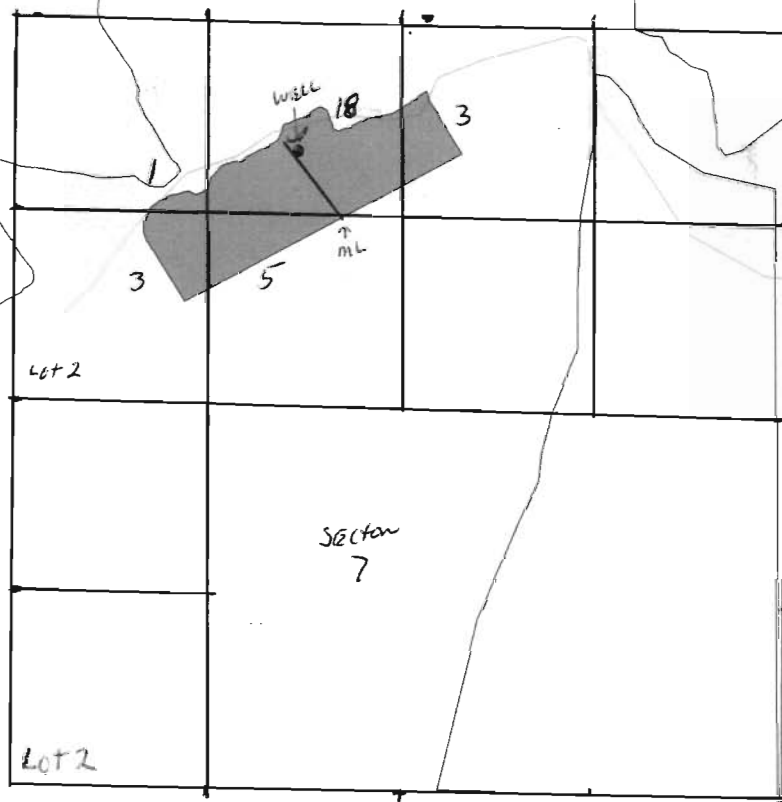
RECEIVED

DEC 31 2009

WATER RESOURCES DEPT
 SALEM, OREGON



G17296



15 31 E
 TAX Lot 1000