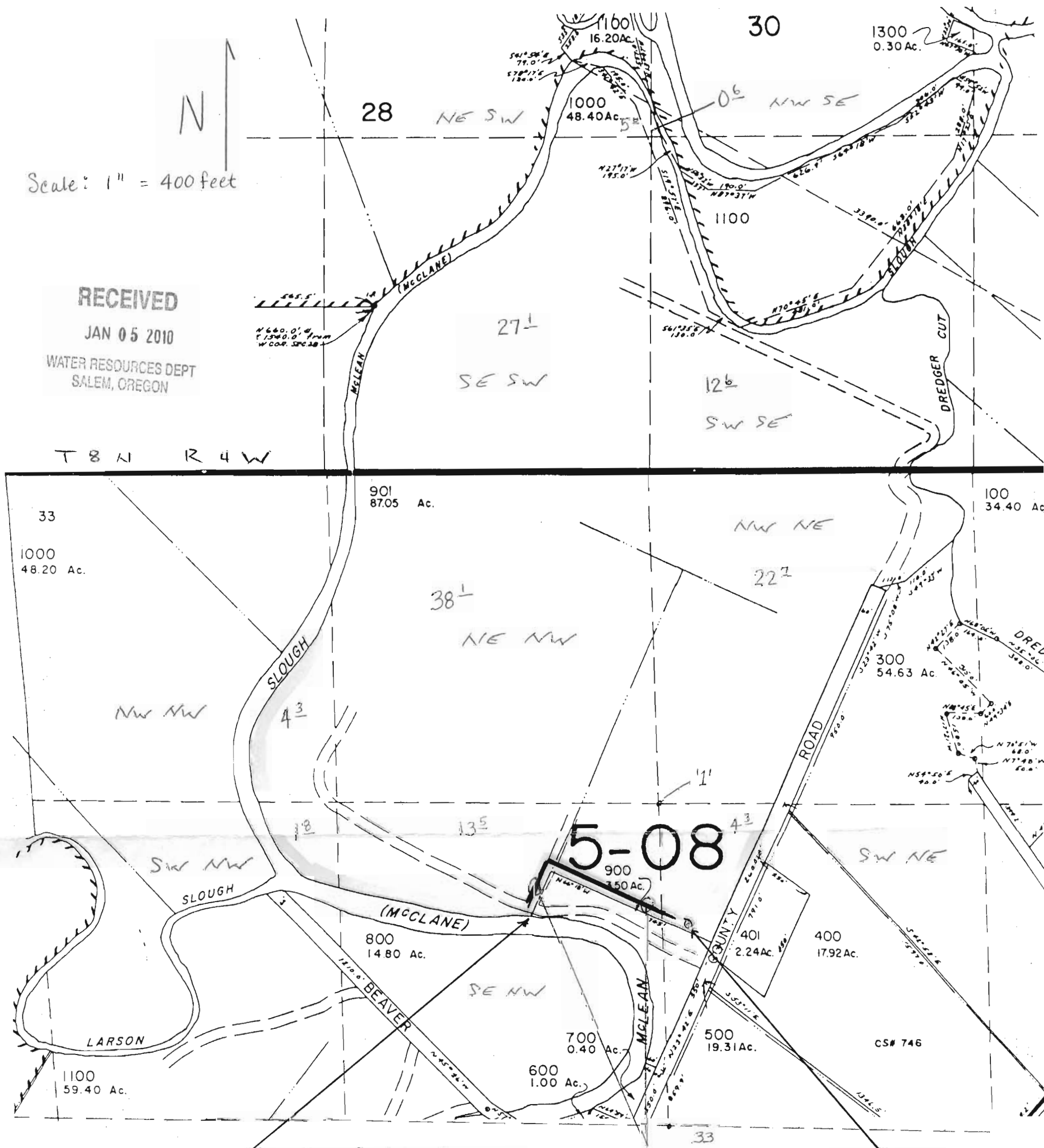


Scale: 1" = 400 feet

RECEIVED

JAN 05 2010

WATER RESOURCES DEPT
SALEM, OREGON



Location of Water Diversion:
West 525 feet and South 450 feet
from the NE corner of the SE 1/4
of the NW 1/4 of Section 33.

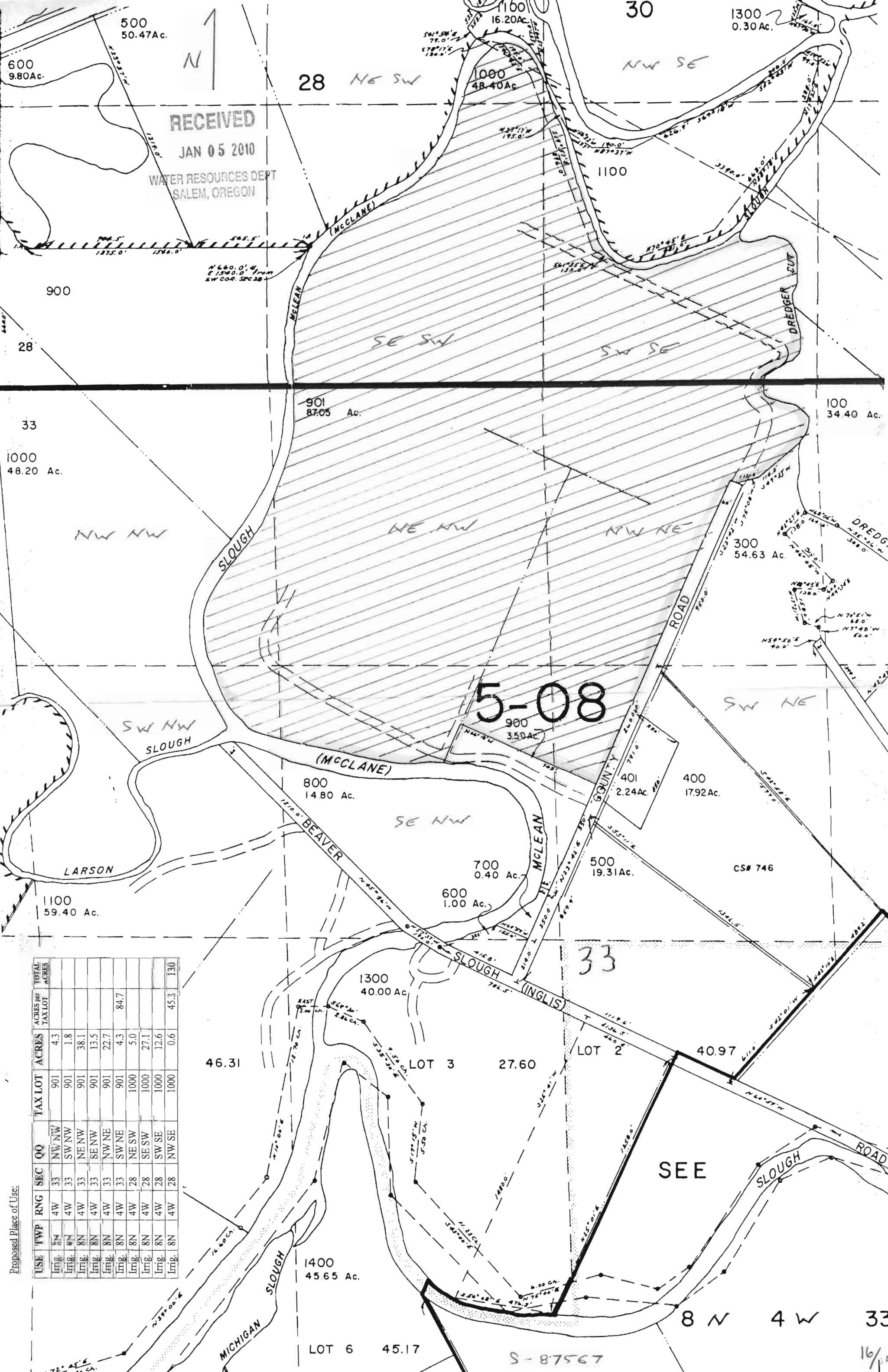
Ditch
Location of Pump Station:
East 75 feet and South 525 feet
from the NW corner of the SW 1/4
of the NE 1/4 of Section 33.

County: Columbia County
Basin: North Coast Basin

Proposed Place of Use:

USE	TWP	RNG	SEC	QQ	TAX LOT	ACRES	ACRES per TAX LOT	TOTAL ACRES
Irrig.	8N	4W	33	NW NW	901	4.3		
Irrig.	8N	4W	33	SW NW	901	1.8		
Irrig.	8N	4W	33	NE NW	901	38.1		
Irrig.	8N	4W	33	SE NW	901	13.5		
Irrig.	8N	4W	33	NW NE	901	22.7		
Irrig.	8N	4W	33	SW NE	901	4.3	84.7	
Irrig.	8N	4W	28	NE SW	1000	5.0		
Irrig.	8N	4W	28	SE SW	1000	27.1		
Irrig.	8N	4W	28	SW SE	1000	12.6		
Irrig.	8N	4W	28	NW SE	1000	0.6	45.3	130

RECEIVED
 JAN 05 2010
 WATER RESOURCES DEPT
 SALEM, OREGON



Proposed Place of Use:

USE	TWP	RNG	SEC	QQ	TAX LOT	ACRES	TOTAL ACRES
Irrig.	8N	4W	33	NW/NW	901	4.3	130
Irrig.	8N	4W	33	SW/NW	901	1.8	
Irrig.	8N	4W	33	NE/NW	901	38.1	
Irrig.	8N	4W	33	SE/NW	901	13.5	
Irrig.	8N	4W	33	NW/NE	901	22.7	
Irrig.	8N	4W	33	SW/NE	901	4.3	84.7
Irrig.	8N	4W	28	NE/SW	1000	5.0	
Irrig.	8N	4W	28	SE/SW	1000	27.1	
Irrig.	8N	4W	28	SW/SE	1000	12.6	
Irrig.	8N	4W	28	NW/SE	1000	0.6	45.3