

RECEIVED

JUN 23 2009

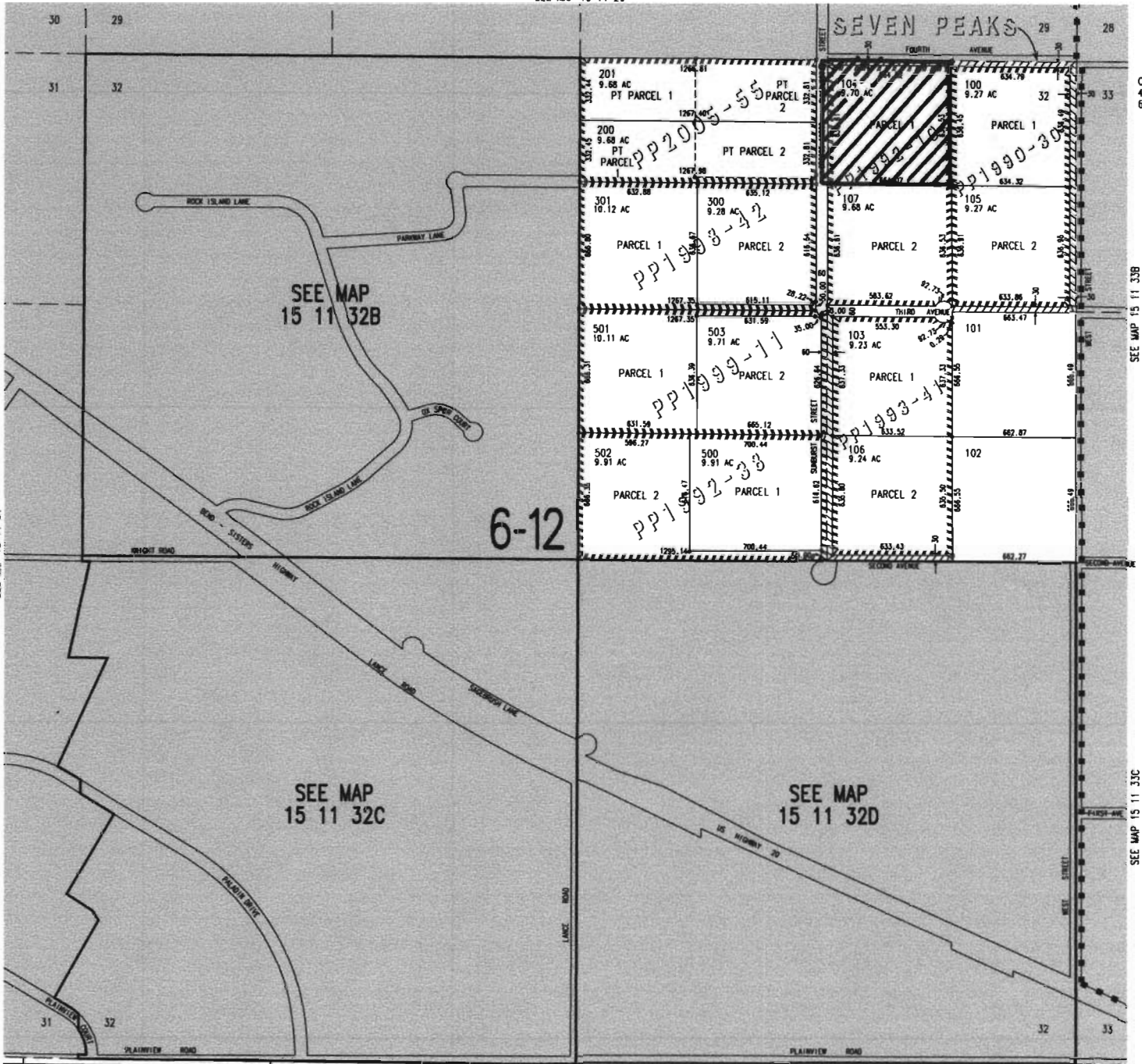
WATER RESOURCES DEPT
SALEM, OREGON

15 11 32
& INDEX

SECTION 32 T.15S. R.11E. W.M.
DESCHUTES COUNTY

1" = 400'

SEE MAP 15 11 29



Cancelled Nos.
400
600 thru 800

SEE MAP 15 11 33B

SEE MAP 15 11 33C

SEE MAP 15 11 31

5

5

5

4

SEE MAP 16 11 05

15 11 32
& INDEX



PORTION OF CERT. 75569
TO CANCEL

