

59.62' AND  
S50°15'W 916.90' FROM  
FROM MOST NLY  
COR. 1952-1553-304

100  
2.08 AC.

PT. LIES S43°48'W  
59.62' AND  
S50°15'W 1257.05'  
FROM MOST NLY  
COR. 1952-1553-304

200  
3.00 AC.

SFE MAP 2N IW 7

MOST NLY COR.  
1969-664-292

300  
10.08 AC.



= IRRIGATED AREAS  
APPROX. 8 ACRES

500  
18.17 AC.

SEE CS 37333

049

POND

SEE CS 3627

1100  
2.00 AC.

1300  
4.98 AC.

1400



G1730Z

THIS MAP WAS PREPARED FOR ASSESSMENT PURPOSE ONLY

SE1/4 SEC. 7 T.2N. R.1W. W.M. MULTNOMAH COUNTY

2N 1W

CORRECTED ADJUSTED APPROX SCALE 1" = 300 FEET

CANCELLED N 200

APPROX. GEN. SEC.

APPROX. 1/4 COR.

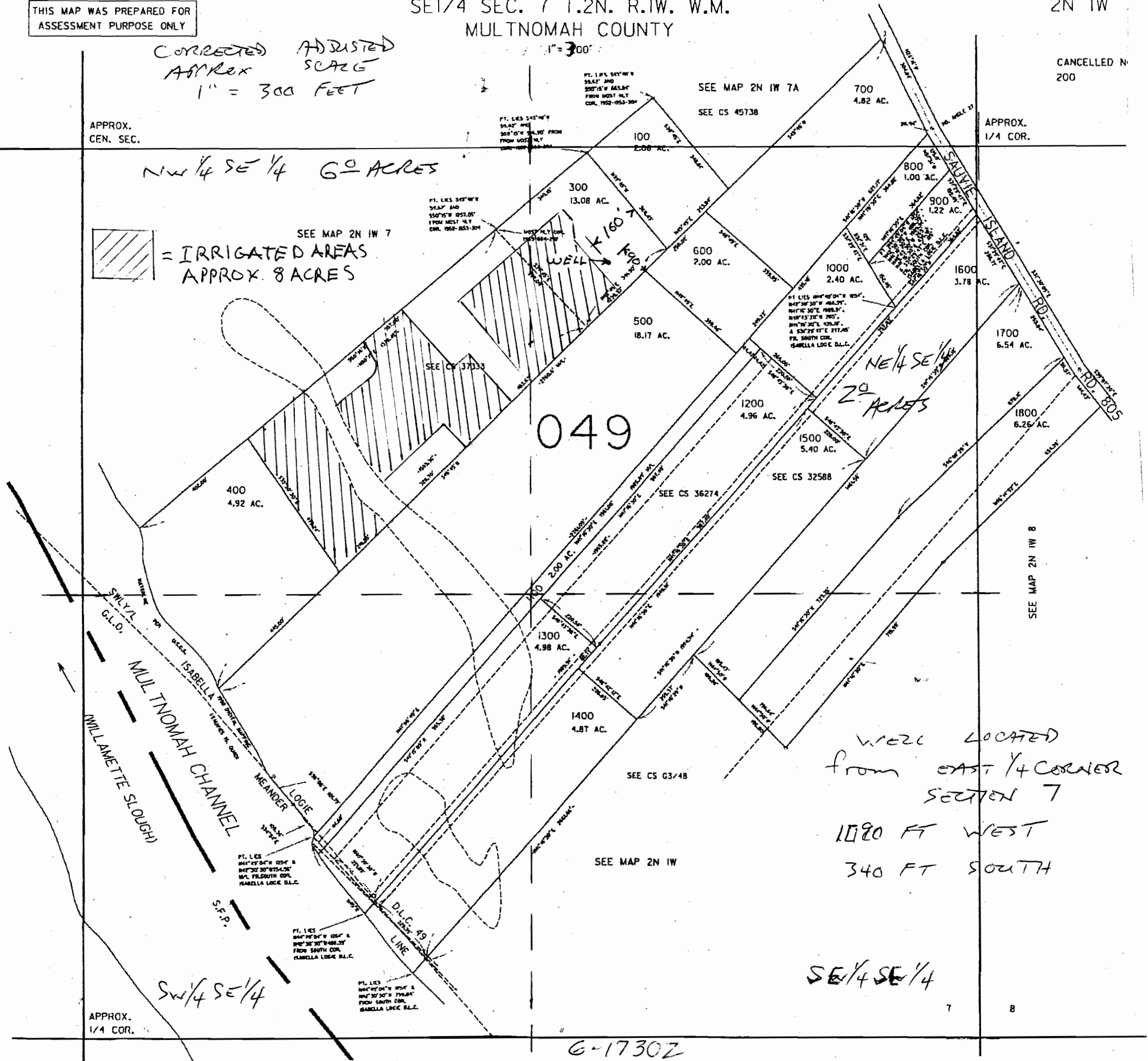
NW 1/4 SE 1/4 60 ACRES

[Hatched Box] = IRRIGATED AREAS APPROX. 8 ACRES

SEE MAP 2N 1W 7

049

NE 1/4 SE 1/4 20 ACRES



WELL LOCATED FROM EAST 1/4 CORNER SECTION 7 1080 FT WEST 340 FT SOUTH

SE 1/4 SE 1/4

APPROX. 1/4 COR.

8

G-1730Z