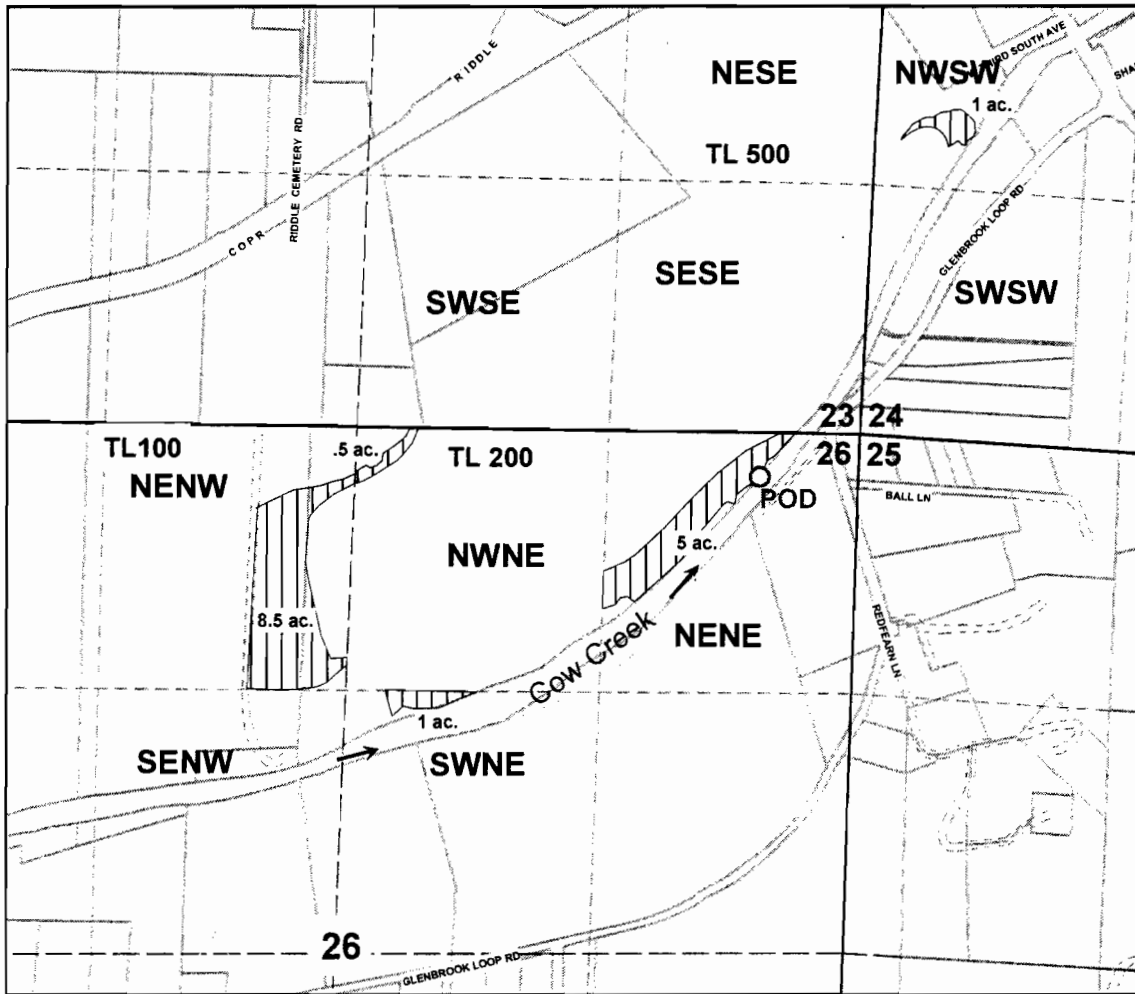


SECTIONS 24, 26 T.30S. R.6W. W.M.  
 DOUGLAS COUNTY  
 Scale 1" = 1000'



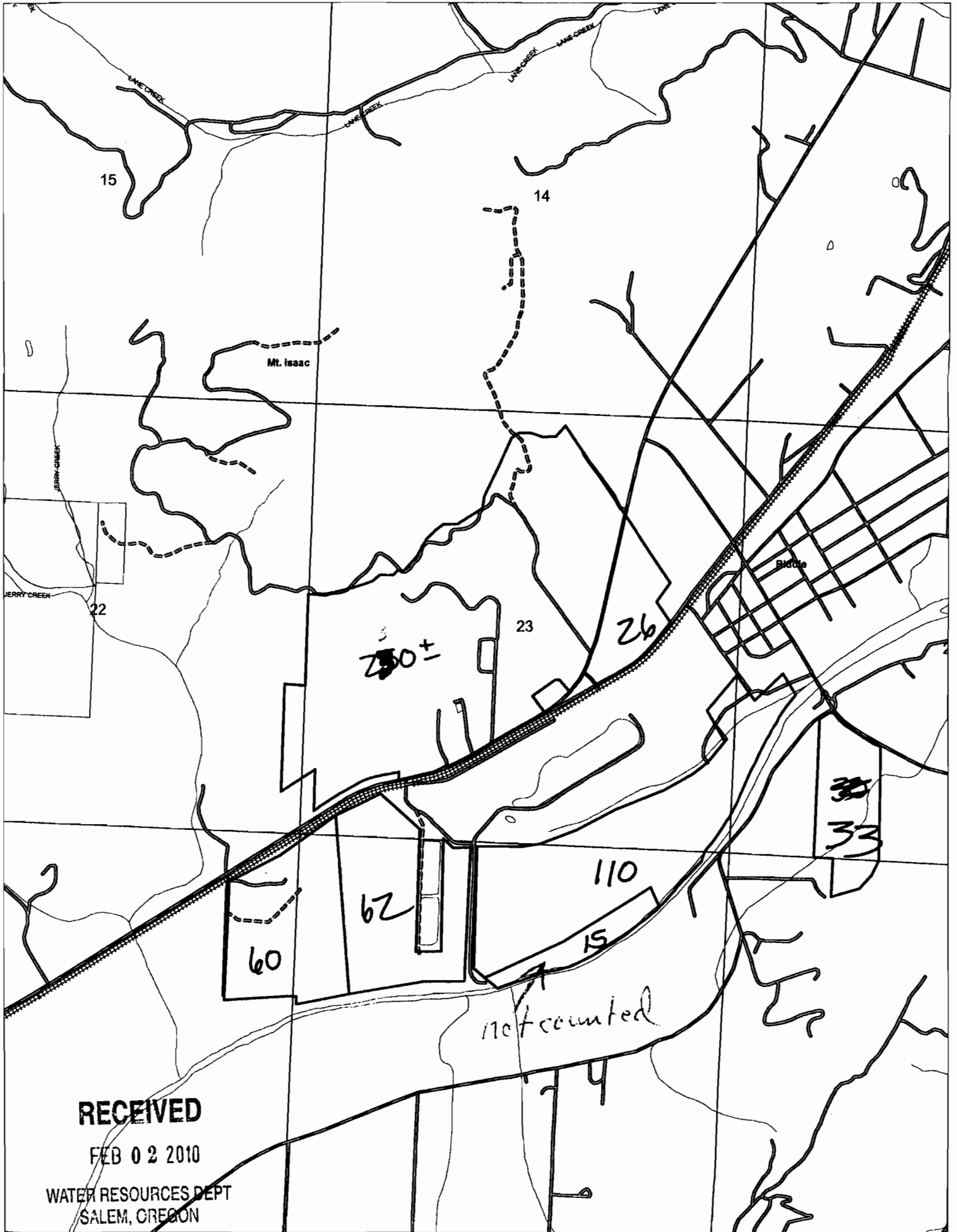
POD: 230 ft. S. and 550 ft. W. from the NE corner of Sec. 26

**RECEIVED**

FEB 02 2010

WATER RESOURCES DEPT  
 SALEM, OREGON

# RIDDLE LEASE AREA



**RECEIVED**

FEB 02 2010

WATER RESOURCES DEPT  
SALEM, OREGON