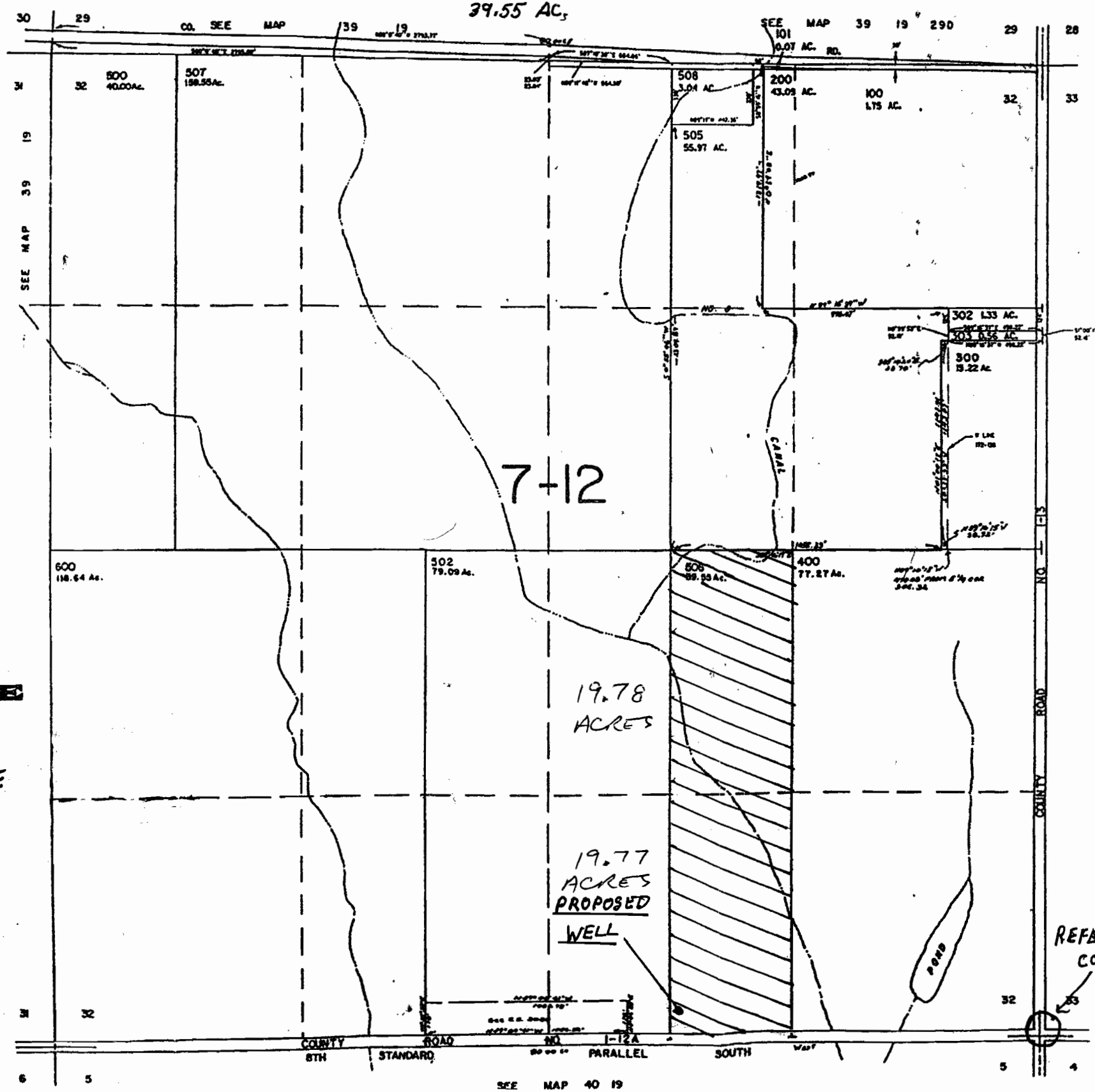


G-17311
TAX LOT 506
E 1/2 W 1/2 SE 1/4 SEC. 32, TWP. 39S. R. 19E W.M.

SECTION 32 T.39S. R.19E. W.M.
LAKE COUNTY

1" = 660'
39.55 AC.



PROPOSED WELL
1980' WEST - 124' NORTH
FROM THE S.E. CORNER OF
SECTION 32



 PLACE OF USE

RECEIVED
FEB 11 2010
WATER RESOURCES DEPT
SALEM, OREGON

REFERENCE
CORNER

G-17311

503-986-0901

ATTENTION HERB,

NW¹/₄, SE¹/₄ 19.78 AC.

SW¹/₄, SE¹/₄ 19.77 AC.

Kenneth J. Bincible

360-798-0394