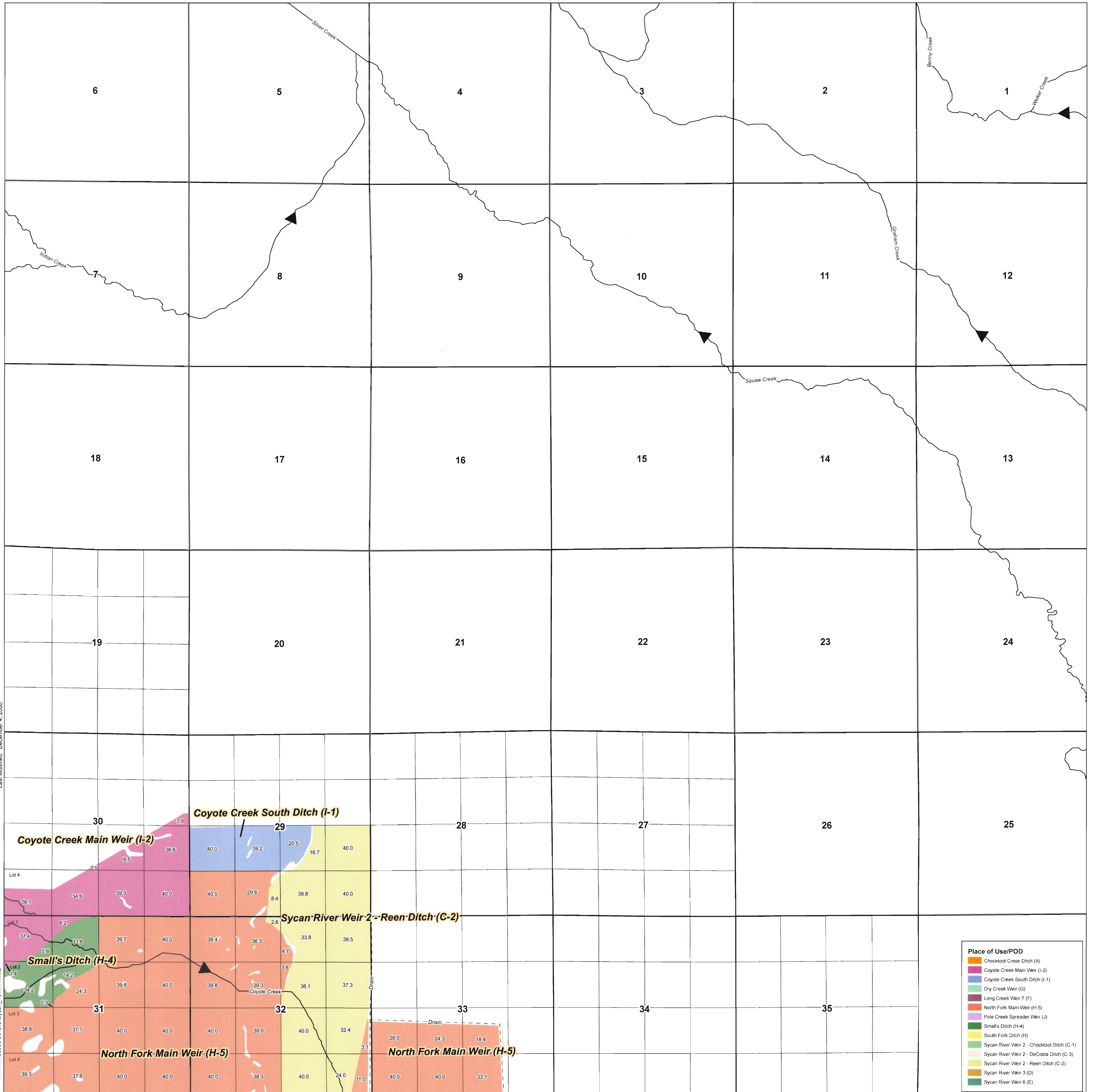


TOWNSHIP 31 SOUTH, RANGE 14 EAST, W.M.  
 CLAIM 36  
 Sycan Marsh Preserve  
 The Nature Conservancy

RECEIVED  
 DEC 13 2006  
 WATER RESOURCES DEPT  
 SALEM, OREGON



See map T. 31 S., R. 13 E.

Last Modified: December 4, 2006

P:\11113003\GIS\Sycan\_131R14.mxd

See map T. 32 S., R. 14 E.

- NOTES**
1. This map is not intended to provide dimensions or locations of property ownership lines.
  2. Site inspection of points of diversion completed on July 20 and 21, 2005.
  3. The location of the irrigated areas are based on Oregon Water Resources Department maps prepared in the 1970s and documentation provided by The Nature Conservancy. These data have not been field verified by GeoEngineers, Inc.



1 inch = 1,320 feet  
 0 1,320 Feet

**Legend**

- Point of Diversion (POD)
- Railroad
- River
- Ditch/Drain
- Stream
- Quarter/Quarter
- Section

**Areas of Overlapping Irrigation**

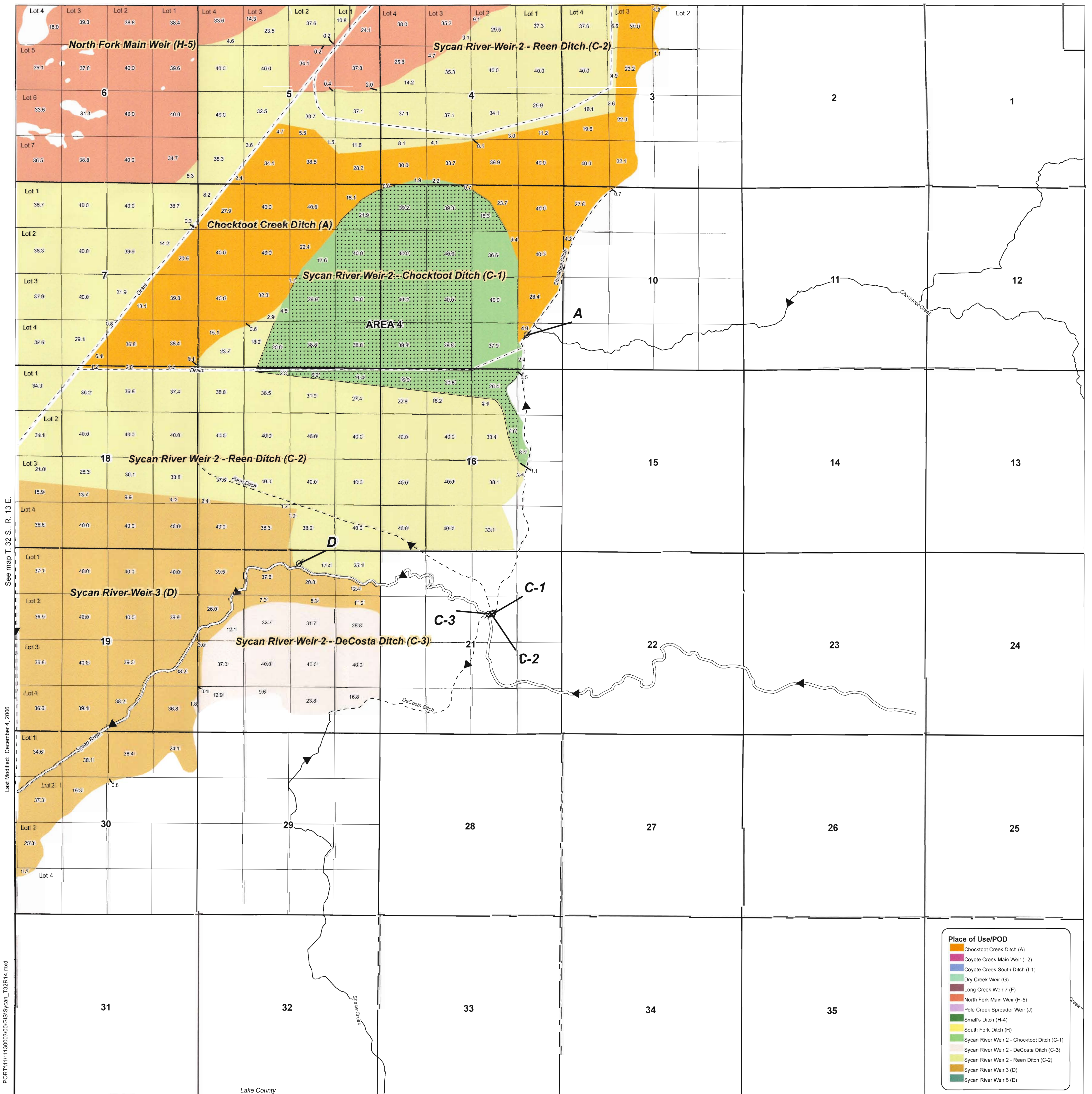
**Overlap From:**

- North Fork Main Weir (H-5)
- South Fork Ditch (H)
- Sycan River Weir 2 - Reen Ditch (C-2)

TOWNSHIP 32 SOUTH, RANGE 14 EAST, W.M.  
CLAIM 36  
Sycan Marsh Preserve  
The Nature Conservancy

RECEIVED  
DEC 13 2006  
WATER RESOURCES DEPT  
SALEM, OREGON

See map T. 31 S., R. 14 E.



See map T. 32 S., R. 13 E.  
Last Modified: December 4, 2006  
PORT\111130003000\GIS\Sycan\_T32R14.mxd

POD A is 900 feet NORTH and 1040 feet WEST of the SE corner of Section 9  
POD C-1 is 1790 feet SOUTH and 2000 feet WEST of the NE corner of Section 21  
POD C-2 is 1810 feet SOUTH and 2040 feet WEST of the NE corner of Section 21  
POD C-3 is 1810 feet SOUTH and 2120 feet WEST of the NE corner of Section 21  
POD D is 380 feet SOUTH and 2360 feet WEST of the NE corner of Section 20

**NOTES**  
1. This map is not intended to provide dimensions or locations of property ownership lines.  
2. Site inspection of points of diversion completed on July 20 and 21, 2005.  
3. The location of the irrigated areas are based on Oregon Water Resources Department maps prepared in the 1970s and documentation provided by The Nature Conservancy. These data have not been field verified by GeoEngineers, Inc.



1 inch = 1,320 feet  
0 1,320 Feet



**Legend**

- ⊗ Point of Diversion (POD)
- Railroad
- River
- - - Ditch/Drain
- Stream
- Quarter/Quarter
- Section

**Areas of Overlapping Irrigation Overlap From:**

- North Fork Main Weir (H-5)
- South Fork Ditch (H)
- Sycan River Weir 2 - Reen Ditch (C-2)