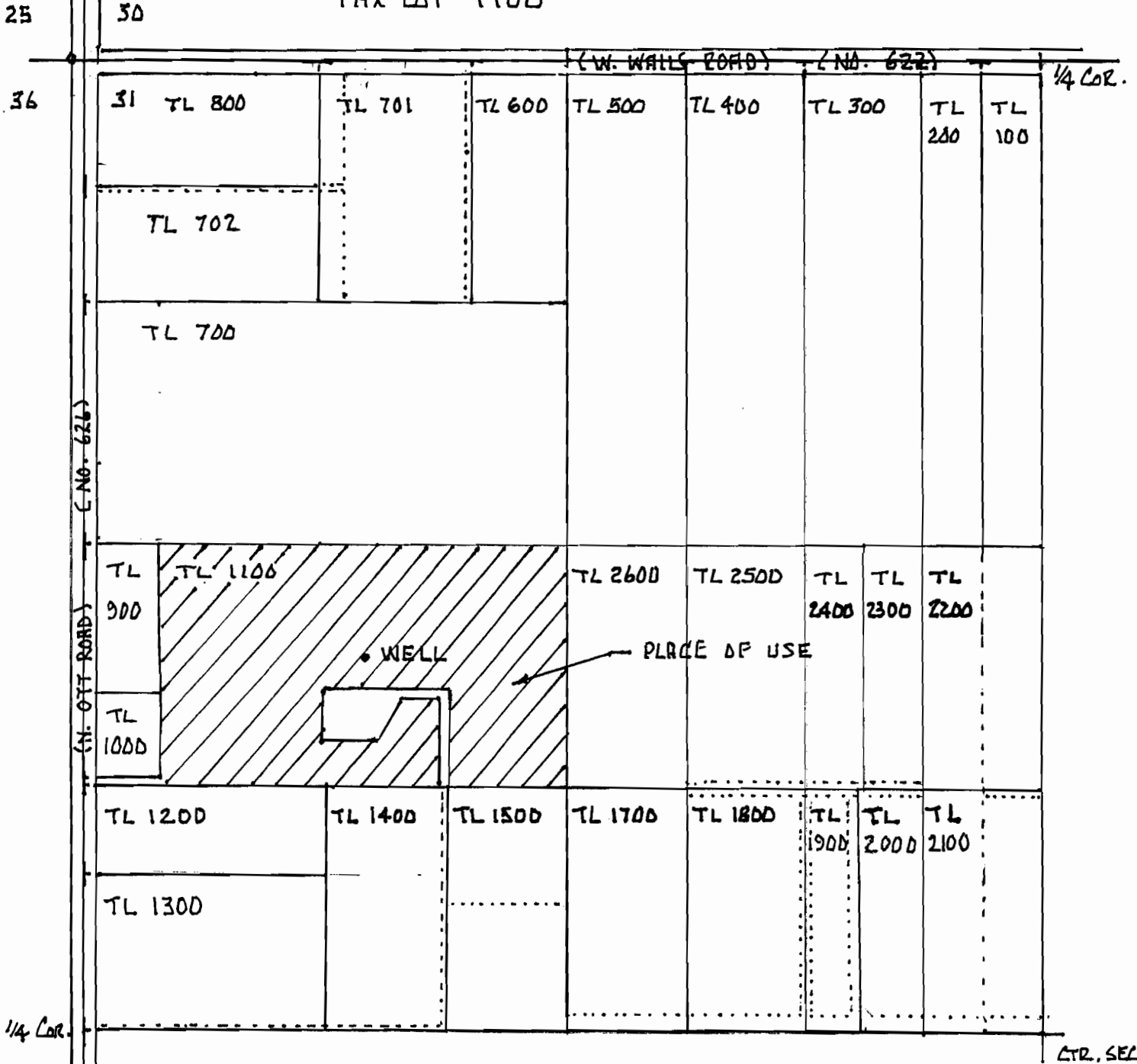


TOWNSHIP 5 NORTH, RANGE 29 EAST, W. M.
 NW 1/4 SE 1/4 OF SECTION 31
 UMATILLA COUNTY
 TAX LOT 1100

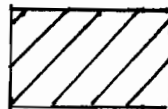


WATER RIGHT APPLICATION MAP
RECEIVED

WELL LOCATED 1630' S AND 170' E FROM
 NW CORNER OF SECTION 31

FEB 26 2010

WATER RESOURCES DEPT
 SALEM, OREGON



PLACE OF USE

16.5 ACRES



SCALE 1" = 400'