

Roy Keller Groundwater
 Application Map T. 4N., R. 28E., Sec. 1A
 Tax lot #600



Scale: 1" = 400'

G-17316

Map prepared for Assessment & Taxation purposes
 been prepared or is suitable for legal,
 surveying purposes.

NE 1/4 SEC 1 T 4N R 28E WM
 UMATILLA COUNTY, OR

11/3/05

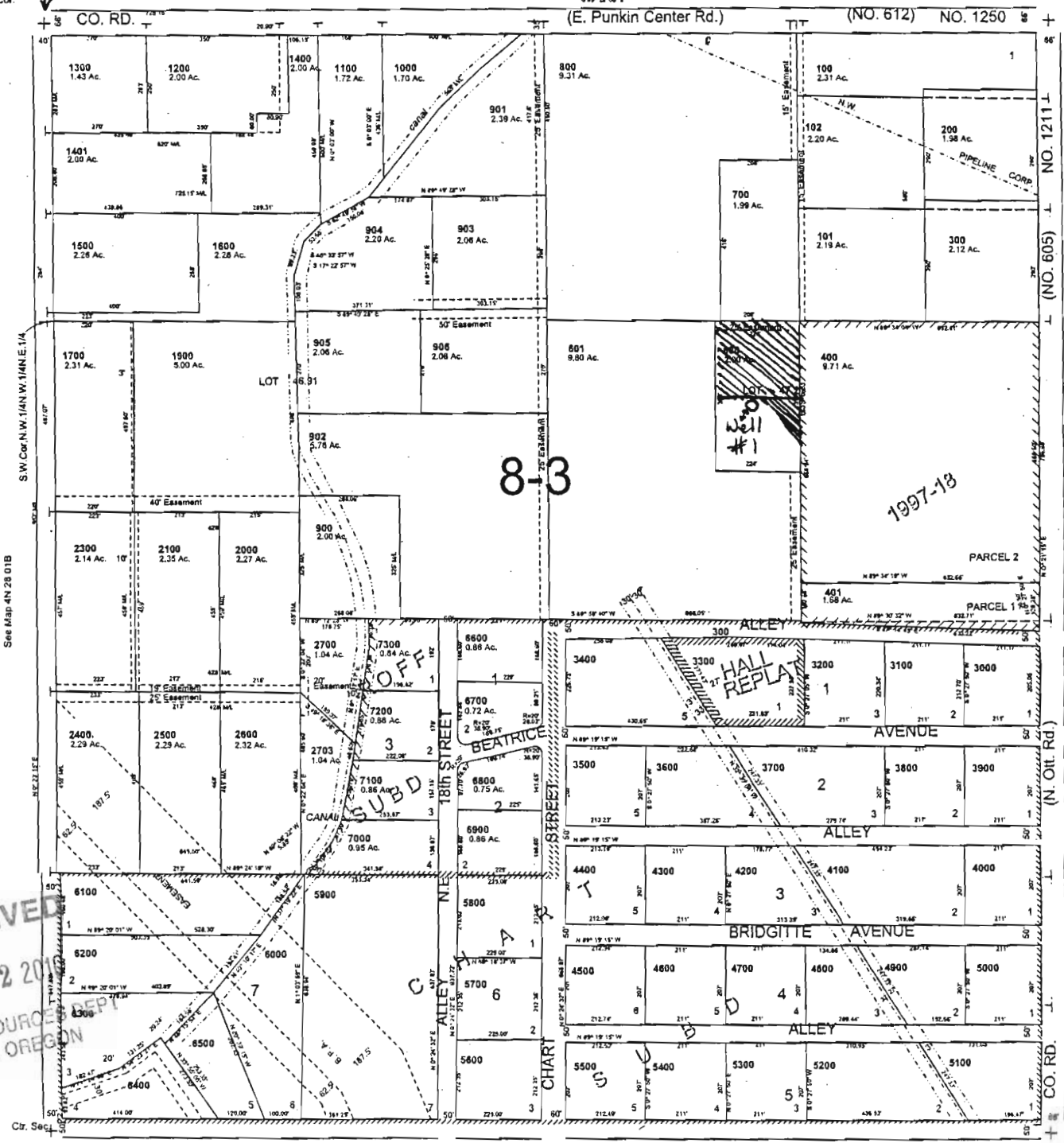
4N 28

SCALE: 1" = 200'

AERIAL PHOTO NO. N2

N. 1/4 Corner
 1/4 Cor.

See Map 5N 28 380



RECEIVED
 MAR 02 2005
 WATER RESOURCES DEPT
 SALEM, OREGON

Well Location

NENE Sec. 1,
 T. 4N., R. 28E. W.M.;
 1000' So. & 1840' E. from the
 N 1/4 Corner, Sec. 1 tax lot 600 Umatilla Co. Basin 2

Key

Proposed POA = ○ (Well #1)
 Proposed POI = ▨ (Primary Irrigation)

POU # Ac. per 1/4 1/4

1.5 acres Irr.
 NENE TL 600
 T. 4N. R. 28E. Sec. 1