

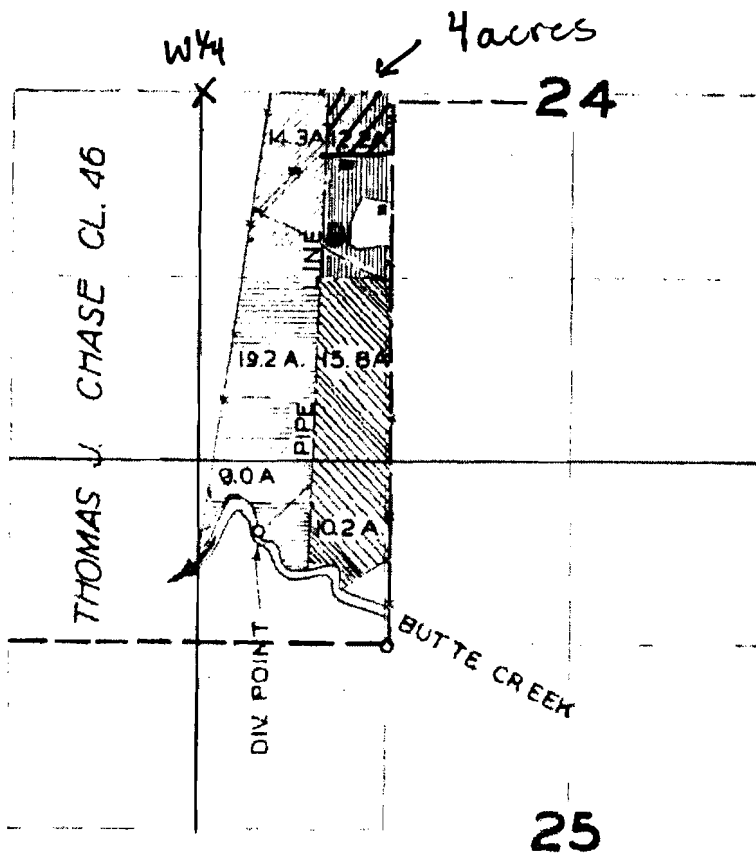
1" = 1320'
Tax lot - 1100

Reservoir POD
1,000'ft South
950'ft East

T. 5S. R. 1W. W. M. from W/4 corner
Section 24



RECEIVED
MAR 05 2010
WATER RESOURCES DEPT
SALEM, OREGON



	PER. 15278
	PER. 15644
	PER. 18837
	PER. 18873

FINAL PROOF SURVEY
UNDER

Application No. Permit No.
IN NAME OF

DAVID ELVIN SHATTO AND IRVIN SHATTO

Surveyed APR 18 1950, by H.L. COFFMAN

RECEIVED

MAY 08 2008
WATER RESOURCES DEPT
SALEM, OREGON

S-87588-REP
App No R 8 7180

D.L.C.'S
CHASE NO. 46
OON NO. 57

This map was prepared for
assessment purpose only.

CLACKAMAS COUNTY

CORRECTED ADJUSTED
ARVILLE SCALE
1" = 600 FEET

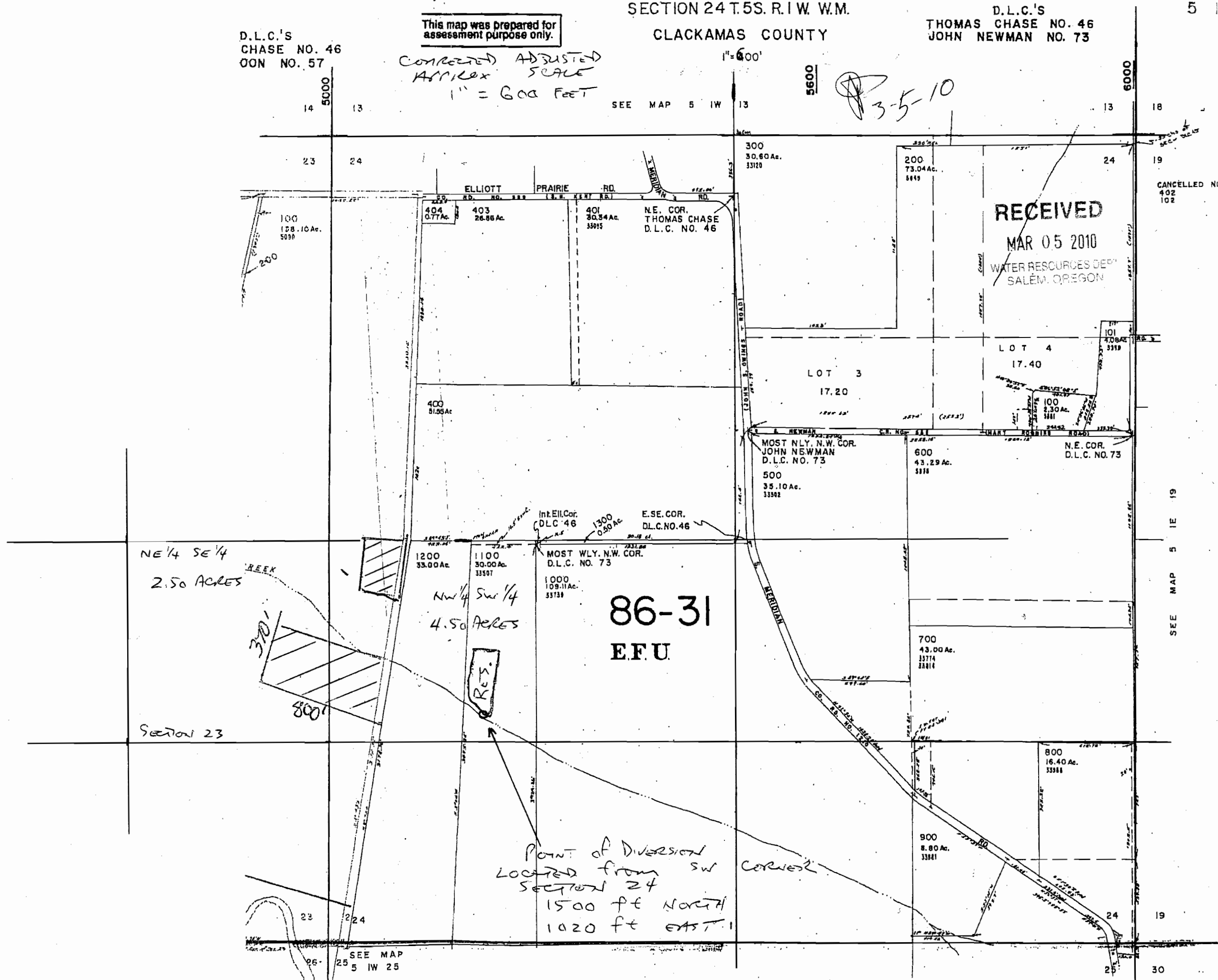
1" = 600'

3-5-10

SEE MAP 5 IW 13

CANCELLED NO.
402
102

RECEIVED
MAR 05 2010
WATER RESOURCES DEPT
SALEM, OREGON



SEE MAP 5 IE 19

NE 1/4 SE 1/4
2.50 ACRES

NW 1/4 SW 1/4
4.50 ACRES

86-31
E.F.U.

POINT OF DIVERSION
LOCATED FROM SW CORNER
SECTION 24
1500 FT NORTH
1020 FT EAST

SEE MAP
5 IW 25