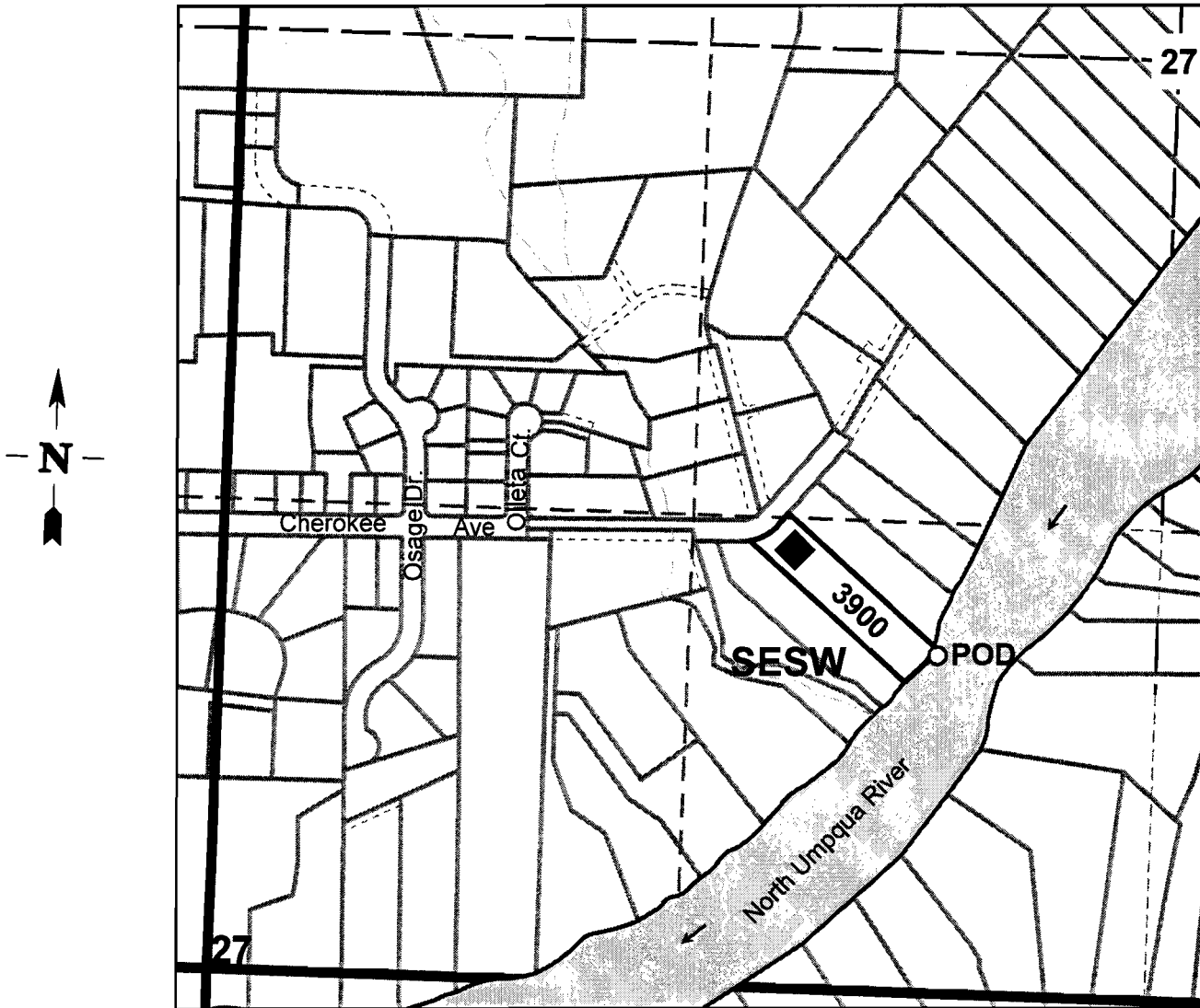


SEC.27 T.26S. R.6W. W.M.  
DOUGLAS COUNTY  
Scale 1" = 500'



**POD: 950 ft. N. and 2020 ft. E. from the SW corner of Section 27**

**RECEIVED**

MAR 31 2010

WATER RESOURCES DEPT  
SALEM, OREGON

S-87595