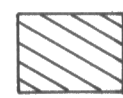
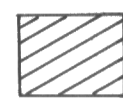

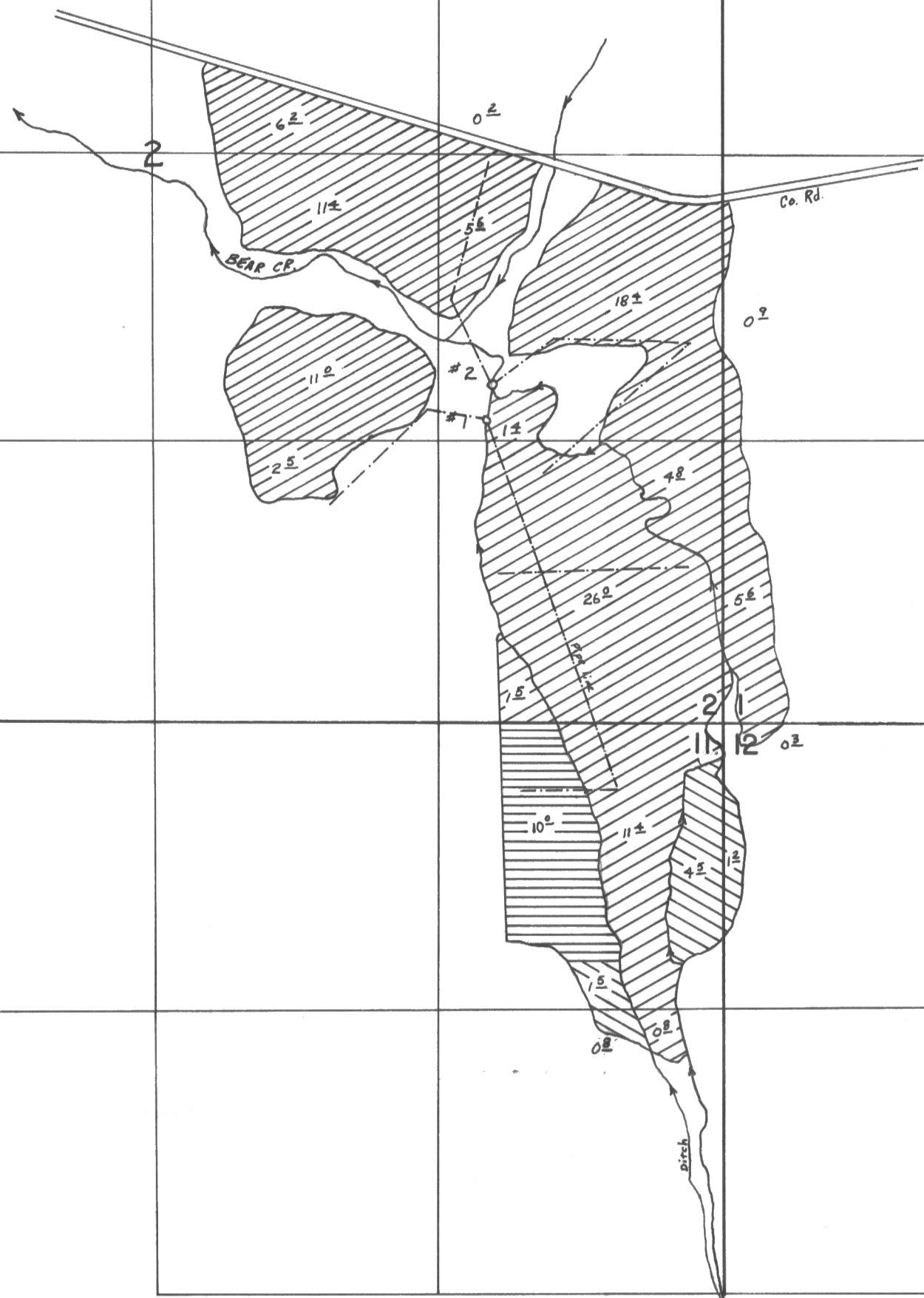


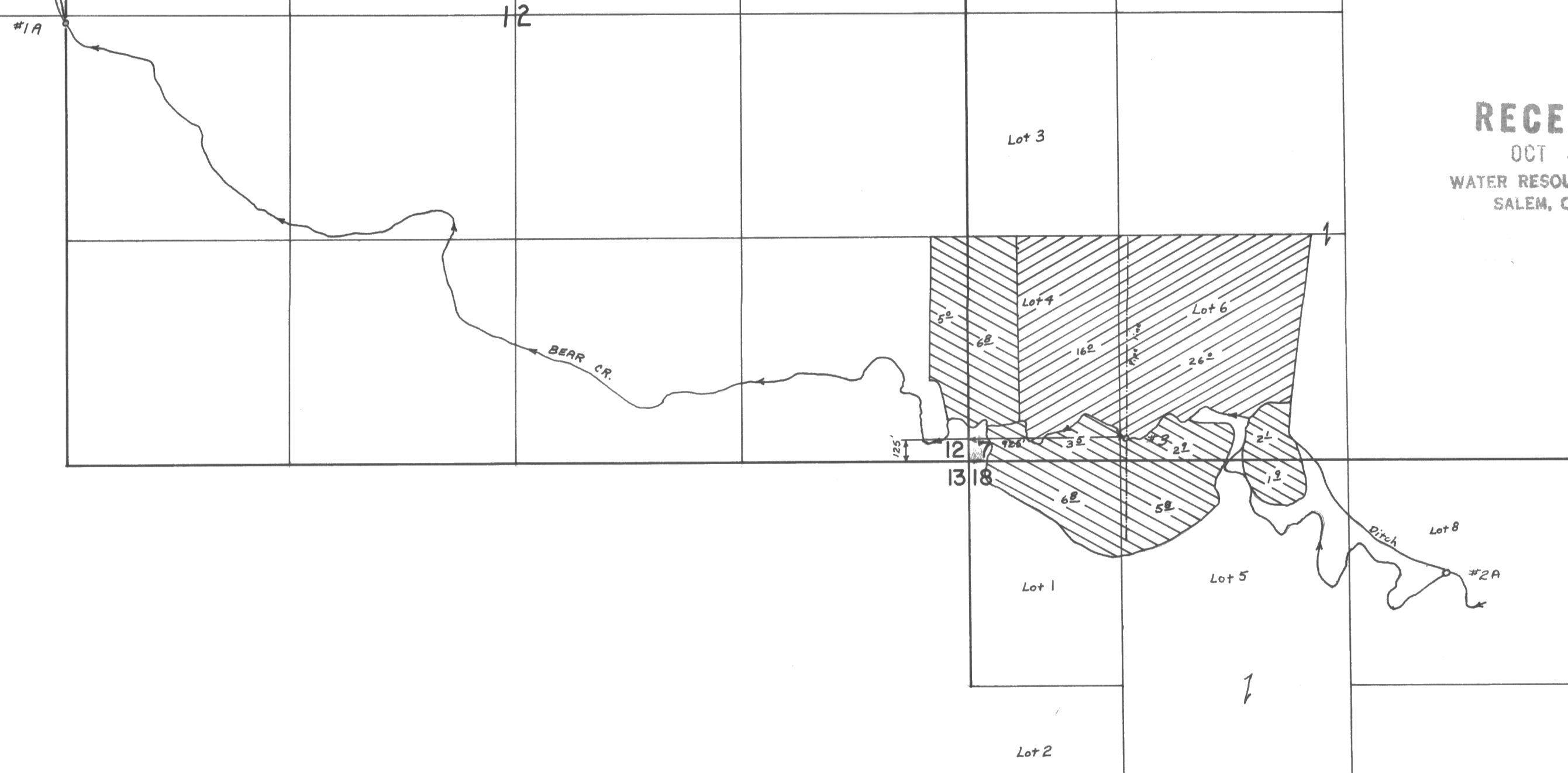
Township 19 S. Range 17 & 18 E. W.M.

-  NEW Land irrigated from Div. Pt. #1 & #3 in addition to original Div. Pt. #1A & #2A (Appl. No. 55566)
-  1900 Land irrigated from Div. Pt. #1 & #2 & #3 in addition to original Div. Pt. #1A
-  1910 Land irrigated from Div. Pt. #1 & #2 in addition to original Div. Pt. #1A

Scale: 8" = 1 mile



Range 17 E.
Range 18 E.



RECEIVED
OCT 3 1978
WATER RESOURCES DEPT.
SALEM, OREGON