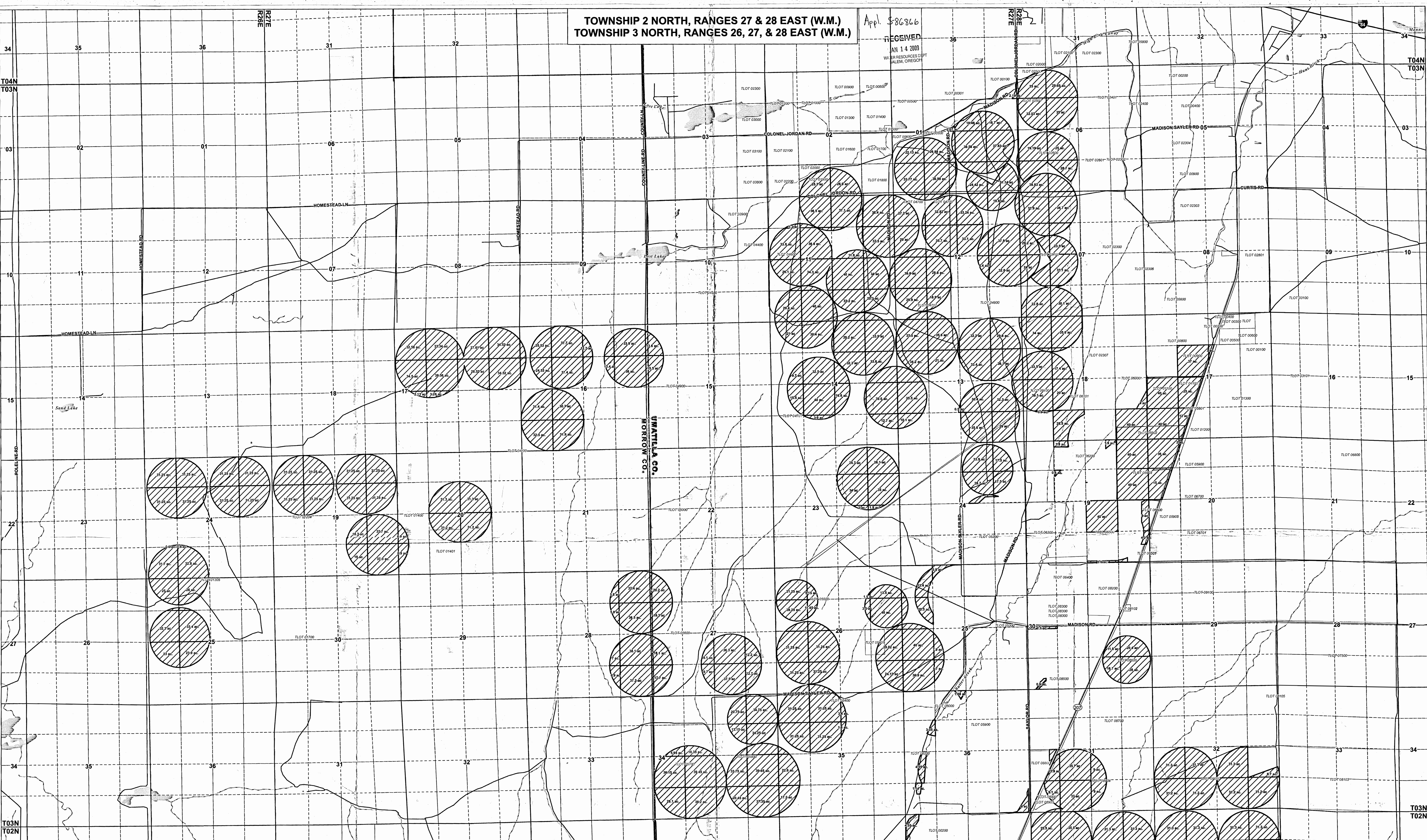


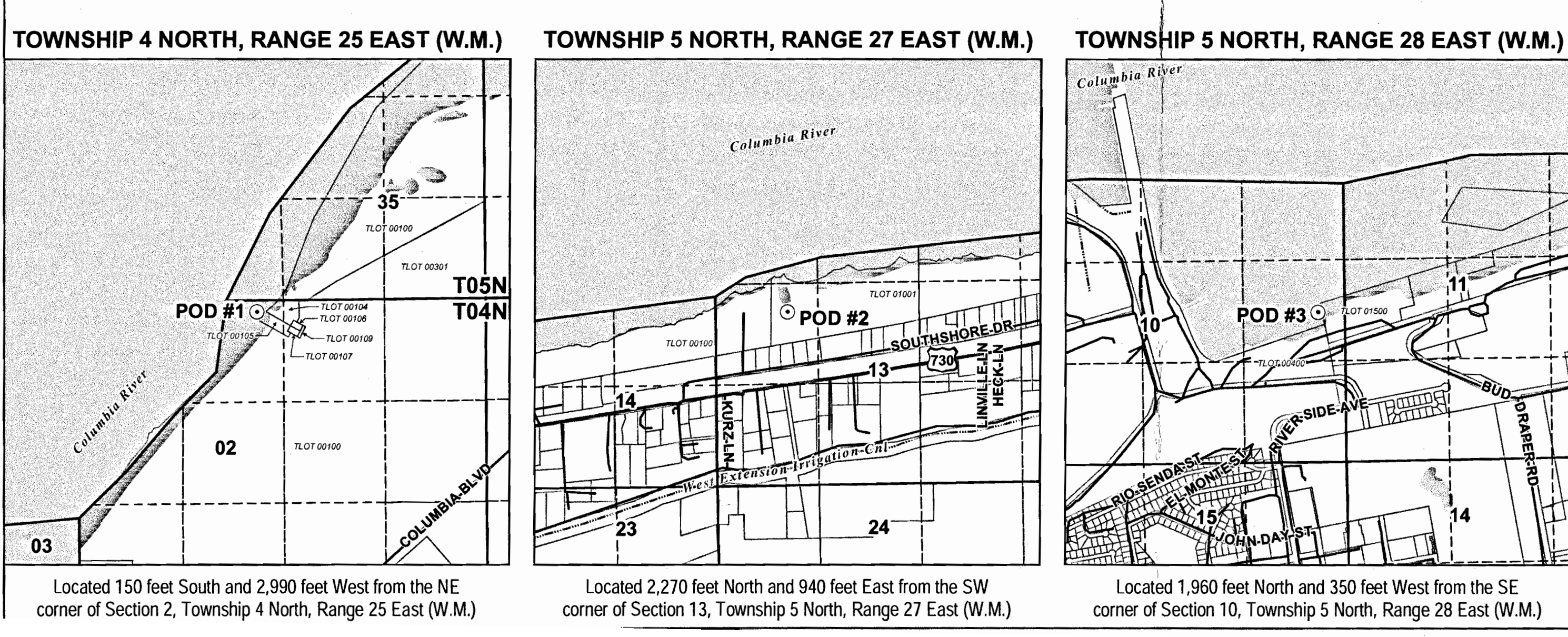
TOWNSHIP 2 NORTH, RANGES 27 & 28 EAST (W.M.)
 TOWNSHIP 3 NORTH, RANGES 26, 27, & 28 EAST (W.M.)

Appl. S-86366

RECEIVED
 JAN 14 2009
 WATER RESOURCES DIV.
 SALEM, OREGON



POINT OF DIVERSION (POD) LOCATIONS



Application for a New Surface Water Permit
 Umatilla and Morrow Counties, Oregon

LEGEND

- Points of Diversion (POD)
- ▨ Place of Use (POU)
- ▭ Tax Lots
- Freeways and Highways
- Roads
- Waterbodies
- Watercourses

MAP NOTES:
 Prepared: Oregon State Plane North Zone
 Datum: North American Datum of 1983
 Date: October 11, 2008
 Drawn/Checked: GSI
 Umatilla County, Oregon
 Morrow County, Oregon

Scale: 1 inch equals 1,320 feet

GSI
 Water Solutions, Inc.