



Oregon

Theodore R. Kulongoski, Governor

Water Resources Department

North Mall Office Building

725 Summer Street NE, Suite A

Salem, OR 97301-1271

503-986-0900

FAX 503-986-0904

**CERTIFIED MAIL
Return Receipt Requested**

February 15, 2008

KENT MADISON
29299 MADISON RD
ECHO, OR 97826

Reference: File S-86866

Dear Mr. Madison:

**THIS IS NOT A PERMIT AND IS
SUBJECT TO CHANGE AT THE NEXT PHASE OF PROCESSING.**

This letter is to inform you of the preliminary analysis of your water use permit application and to describe your options. In determining whether a water use permit application may be approved, the Department must consider the factors listed below, all of which must be favorable to the proposed use if it is to be allowed. Based on the information you have supplied, the Water Resources Department has made the following preliminary determinations:

Initial Review Determinations:

1. The application proposed to use 22.3 cubic feet per second (cfs), from two points of diversion on the Columbia River, a tributary of Pacific Ocean, for year-round supplemental irrigation use on 8722.63 acres. The application proposes to utilize an eight-mile pipeline and a four-mile ditch operated by the Columbia Improvement District as the proposed delivery system from the Columbia River to the place of use.
2. The proposed use is not prohibited by law or rule except where otherwise noted below.
3. The use of water from Columbia River, a tributary of Pacific Ocean, for supplemental irrigation use is allowable under the Columbia River Basin Program.
4. Surface water is available in the amount and for the full period requested.
5. OAR 690-033-0120(2) prohibits the diversion of water from April 15 through September 30 of each year.

6. The application form listed the number of acres as 8722.83 acres. For this application, the number of acres shown on the application map totals 8722.63 acres. The Department's policy of determining the proposed acreage for irrigation is to use the application map and the acreage listed on the map if there is a discrepancy between the number of acres requested on the application and that shown on the map.
7. The Department has determined there are deficiencies with the application. Please refer to the **Additional Information Required** section below for specific information.
8. The application proposed supplemental irrigation on lands located in Section 24 and Section 25, Township 3 North, Range 27 East, W.M., and in Section 30, Township 3 North, Range 28 East, W.M. However, the Department's records show only a portion of these lands with underlying primary acres. The Department will not allow the use of water for supplemental irrigation with no underlying primary right.

In Section 24, T3N, R27E, W.M., the application proposed supplemental irrigation of 26.2 acres in SE 1/4 NE 1/4, 40.0 acres in NE 1/4 SE 1/4, 40.0 acres in NW 1/4 SE 1/4, 40.0 acres in SW 1/4 SE 1/4, and 40.0 acres in SE 1/4 SE 1/4. The Department's records show only 22.2 primary acres in SE 1/4 NE 1/4, 30.6 acres in NE 1/4 SE 1/4, 34.1 acres in NW 1/4 SE 1/4, 9.8 acres in SW 1/4 SE 1/4, and 28.3 acres in SE 1/4 SE 1/4.

In Section 25, T3N, R27E, W.M., the application proposed supplemental irrigation of 40.0 acres in NE 1/4 NE 1/4, and 21.6 acres in SW 1/4 NE 1/4. The Department's records show only 29.7 acres in NE 1/4 NE 1/4, and 18.0 acres in SW 1/4 NE 1/4.

In Section 30, T3N, R28E, W.M., the application proposed supplemental irrigation of 40.0 acres in SE 1/4 SW 1/4, and 25.6 acres in NW 1/4 SE 1/4. The Department's records show only 39.0 acres in SE 1/4 SW 1/4, and 13.9 acres in NW 1/4 SE 1/4.

9. As you noted in the application, Permit S-51017 (Application S-70272) was issued for the use of 33.42 cfs from the Columbia River for irrigation on 7597.9 acres and supplemental irrigation on 2047.3 acres. Permit S-51017 allows the use of water at any time "*when water can be put to beneficial use by irrigation, either for immediate crop growth or for forecast requirements to raise the soil moisture to field capacity in the soil profile to be utilized by plant growth in the subsequent growing season.*" Because the source under Permit S-51017 and this application will develop water from the same source, namely the Columbia River, the proposed use of 22.3 cfs under this application may not be used as a supplemental source to Permit S-51017. However, the proposed use of water from Columbia River under this application may be used for primary irrigation to make up deficiency in rate on lands covered under Permit S-51017.

Summary of Initial Determinations

Because not all items above are favorable, the use of 22.3 CFS from Columbia River, a tributary of Pacific Ocean, for supplemental irrigation use on 8722.63 acres is not allowable, and it appears unlikely that you will be issued a permit. At this time, you must decide whether to proceed or to withdraw your application as described below.

Additional Information Required:

Although it is unlikely that a permit will be issued, if the Department's findings change, additional information will be required. Those items are:

- A copy of the legal description of the property where the two points of diversion are located, the property crossed by the pipeline and ditch, and a portion of the place of use as described below. A legal description is a description of a specific parcel of real estate which often uses one of the following methods; government survey metes and bounds, aliquot parts, subdivision block and lot numbers, or a combination of these. It is often found on a deed, land sales contract, or title insurance policy. OAR 690-310-0040(1)(a)(I) requires the legal description of the property from which the water is to be diverted, any property crossed by the proposed ditch, canal or other work, and any property on which the water is to be used as depicted on the map. Please submit a legal description for the following:
 1. The two points of diversion located in the NE $\frac{1}{4}$ NW $\frac{1}{4}$, Section 2, Township 4 North, Range 25 East, W.M. and in the NW $\frac{1}{4}$ SW $\frac{1}{4}$, Section 13, Township 5 North, Range 27 East, W.M..
 2. The lands where the pipeline and ditch are located between the two points of diversion and the place of use.
 3. The portion of the place of use located in Section 24 and Section 25, Township 3 North, Range 26 East, W.M.
 4. The portion of the place of use located in Section 17, Section 19, Section 20, and Section 28, Township 3 North, Range 27 East, W.M.
 5. The portion of the place of use located in Section 30, Section 31, and Section 32, Township 3 North, Range 28 East, W.M.
 6. The portion of the place of use located in Section 5, and Section 8, Township 2 North, Range 28 East, W.M.

- The map submitted does not meet the requirements of OAR 690-310-0050(4)(c). Please provide a map that shows the location of the tax lots where water is proposed to be used, including the two points of diversion, the pipeline and ditch, and the place of use.
- The map submitted does not meet the requirements of OAR 690-310-0050(4)(a). Please provide a map that shows the correct location of the POD 1 located in Section 2, Township 4 North, Range 25 East, W.M. by reference to a recognized public land survey corner. The coordinates listed on the supplemental map received on December 6, 2007 do not match the location shown.

Please submit this information no later than Thursday, March 20, 2008. If you are unable to submit the information listed above, you may request an administrative hold for up to an additional 180 days. You must submit the request in writing, stating how much more time you will need and why you need additional time. If an administrative hold is granted, your application will not be processed further until the requested information is received or the extended deadline has passed.

If we do not receive the items requested above or a request for an administrative hold by this date, the Department will likely proceed with a Proposed Final Order recommending denial of the application.

Please reference the application number when sending any correspondence regarding the conclusions of this initial review. Comments received within the comment period will be evaluated at the next phase of the process.

To Proceed With Your Application:

If you choose to proceed with your application, you do not have to notify the Department. Your application will automatically be placed on the Department's Public Notice to allow others the opportunity to comment. After the comment period the Department will complete a public interest review and issue a proposed final order.

Withdrawal Refunds:

If you choose not to proceed, you may withdraw your application and receive a refund (minus a \$150 processing charge per application.) To accomplish this you must notify the Department in writing by **Friday, February 29, 2008**. For your convenience you may use the enclosed "STOP PROCESSING" form.

If A Permit Is Issued It Will Likely Include The Following Conditions:

1. Measurement, recording and reporting conditions:
 - A. Before water use may begin under this permit, the permittee shall install a totalizing flow meter or other suitable measuring device as approved by the Director at each point of diversion. The permittee shall maintain the meter or measuring device in good working order, shall keep a complete record of the amount of water used each month, and shall submit a report which includes the recorded water use measurements to the Department annually or more frequently as may be required by the Director. Further, the Director may require the permittee to report general water-use information, including the place and nature of use of water under the permit.
 - B. The permittee shall allow the watermaster access to the meter or measuring device; provided however, where the meter or measuring device is located within a private structure, the watermaster shall request access upon reasonable notice.
2. You may be required to install fish screens at the point of diversion to meet Oregon Department of Fish and Wildlife specifications for adequate protection of aquatic life.

This initial review does not attempt to address various public interest issues such as sensitive, threatened, or endangered fish species. These issues will be addressed as the Department reviews comments from the public and other agencies, and prepares a proposed final order. You should be aware that, if significant public interest issues are found to exist, such a finding could have an impact on the eventual outcome of your application.

The water source identified in your application may be affected by an Agricultural Water Quality Management Area Plan. These plans are developed by the Oregon Department of Agriculture (ODA) with the cooperation of local landowners and other interested stakeholders, and help to ensure that current and new appropriations of water are done in a way that does not adversely harm the environment. You are encouraged to explore ODA's Water Quality Program web site at http://www.oregon.gov/ODA/NRD/water_agplans.shtml to learn more about the plans and how they may affect your proposed water use.

If you have any questions:

Feel free to call me at 503-986-0816 if you have any questions regarding the contents of this letter or your application. Please have your application number available if you call. General questions about water rights and water use permits should be directed to our customer service staff at 503-986-0801. When corresponding by mail, please use this address: Kerry Kavanagh, Oregon Water Resources Department, 725 Summer St NE Ste A, Salem OR 97301-1266. Our fax number is 503-986-0901.

Sincerely,

A handwritten signature in black ink that reads "K Kavanagh". The signature is written in a cursive, flowing style.

Kerry Kavanagh
Water Right Application Caseworker

enclosures: Application Process Description and Stop Processing Request Form

S-86866
WAB 1-no wab
POU 1-no wab
GW

APPLICATION FACT SHEET

Application File Number: S-86866

Applicant: KENT MADISON

County: UMATILLA AND MORROW

Watermaster: 5

Priority Date: MAY 21, 2007

Source: COLUMBIA RIVER, A TRIBUTARY OF PACIFIC OCEAN

Use: SUPPLEMENTAL IRRIGATION USE ON 8722.63 ACRES

Quantity: 22.3 CUBIC FEET PER SECOND

Basin Name & Number: North Coast, #1

Stream Index Reference: Volume 1 COLUMBIA R MISC

Points of Diversion Locations:

POD 1 - NENW, SECTION 2, T4N, R25E, W.M.; 150 FEET SOUTH AND 2990 FEET WEST FROM S1/4 CORNER, SECTION 2

(NOTE: These coordinates do not match location of POD 1 shown on supplemental map received on December 6, 2007)

POD 2 - NWSW, SECTION 13, T5N, R27E, W.M.; 2270 FEET NORTH AND 940 FEET EAST FROM SW CORNER, SECTION 13

Place of Use:

NE ¼ NE ¼ 18.0 ACRES

NW ¼ NE ¼ 40.0 ACRES

NE ¼ NW ¼ 40.0 ACRES

NW ¼ NW ¼ 38.55 ACRES

SECTION 1

TOWNSHIP 2 NORTH, RANGE 27 EAST, W.M.

NE ¼ NE ¼ 31.3 ACRES
NW ¼ NE ¼ 31.3 ACRES
SW ¼ NE ¼ 31.2 ACRES
SE ¼ NE ¼ 31.2 ACRES
NE ¼ NW ¼ 31.3 ACRES
NW ¼ NW ¼ 31.3 ACRES
SW ¼ NW ¼ 31.2 ACRES
SE ¼ NW ¼ 31.2 ACRES
NE ¼ SW ¼ 31.3 ACRES
NW ¼ SW ¼ 31.3 ACRES
SW ¼ SW ¼ 31.2 ACRES
SE ¼ SW ¼ 31.2 ACRES
NE ¼ SE ¼ 31.3 ACRES
NW ¼ SE ¼ 31.3 ACRES
SW ¼ SE ¼ 31.2 ACRES
SE ¼ SE ¼ 31.2 ACRES
SECTION 5

NE ¼ NE ¼ 31.3 ACRES
NW ¼ NE ¼ 31.3 ACRES
SW ¼ NE ¼ 31.2 ACRES
SE ¼ NE ¼ 31.2 ACRES
NE ¼ NW ¼ 35.5 ACRES
NW ¼ NW ¼ 35.5 ACRES
SW ¼ NW ¼ 25.7 ACRES
SE ¼ NW ¼ 25.7 ACRES
SECTION 6

NE ¼ NE ¼ 31.3 ACRES
NW ¼ NE ¼ 31.3 ACRES
SW ¼ NE ¼ 31.2 ACRES
SE ¼ NE ¼ 31.2 ACRES
SECTION 8

TOWNSHIP 2 NORTH, RANGE 28 EAST, W.M.

NE ¼ NE ¼ 31.25 ACRES
NW ¼ NE ¼ 31.25 ACRES
SW ¼ NE ¼ 31.25 ACRES
SE ¼ NE ¼ 31.25 ACRES
NE ¼ NW ¼ 31.25 ACRES
NW ¼ NW ¼ 31.25 ACRES
SW ¼ NW ¼ 31.25 ACRES
SE ¼ NW ¼ 31.25 ACRES
NE ¼ SW ¼ 0.6 ACRE
NW ¼ SW ¼ 0.6 ACRE
SW ¼ SW ¼ 31.7 ACRES
SE ¼ SW ¼ 32.8 ACRES
SECTION 24

TOWNSHIP 3 NORTH, RANGE 26 EAST, W.M.

Place of Use (continued):

NE $\frac{1}{4}$ NW $\frac{1}{4}$ 26.0 ACRES
NW $\frac{1}{4}$ NW $\frac{1}{4}$ 25.0 ACRES
SW $\frac{1}{4}$ NW $\frac{1}{4}$ 32.3 ACRES
SE $\frac{1}{4}$ NW $\frac{1}{4}$ 33.4 ACRES
NE $\frac{1}{4}$ SW $\frac{1}{4}$ 23.9 ACRES
NW $\frac{1}{4}$ SW $\frac{1}{4}$ 23.0 ACRES

SECTION 25

TOWNSHIP 3 NORTH, RANGE 26 EAST, W.M.

NE $\frac{1}{4}$ NE $\frac{1}{4}$ 2.19 ACRES
SW $\frac{1}{4}$ NE $\frac{1}{4}$ 18.48 ACRES
SE $\frac{1}{4}$ NE $\frac{1}{4}$ 16.7 ACRES
SE $\frac{1}{4}$ NW $\frac{1}{4}$ 0.7 ACRE
NE $\frac{1}{4}$ SW $\frac{1}{4}$ 26.88 ACRES
NW $\frac{1}{4}$ SW $\frac{1}{4}$ 22.13 ACRES
SW $\frac{1}{4}$ SW $\frac{1}{4}$ 33.77 ACRES
SE $\frac{1}{4}$ SW $\frac{1}{4}$ 36.99 ACRES
NE $\frac{1}{4}$ SE $\frac{1}{4}$ 37.83 ACRES
NW $\frac{1}{4}$ SE $\frac{1}{4}$ 39.58 ACRES
SW $\frac{1}{4}$ SE $\frac{1}{4}$ 24.42 ACRES
SE $\frac{1}{4}$ SE $\frac{1}{4}$ 31.14 ACRES

SECTION 1

SE $\frac{1}{4}$ SW $\frac{1}{4}$ 25.3 ACRES
SW $\frac{1}{4}$ SE $\frac{1}{4}$ 26.9 ACRES

SECTION 2

NE $\frac{1}{4}$ NE $\frac{1}{4}$ 36.4 ACRES
NW $\frac{1}{4}$ NE $\frac{1}{4}$ 37.1 ACRES
SW $\frac{1}{4}$ NE $\frac{1}{4}$ 11.8 ACRES
SE $\frac{1}{4}$ NE $\frac{1}{4}$ 37.5 ACRES
NE $\frac{1}{4}$ NW $\frac{1}{4}$ 36.5 ACRES
NW $\frac{1}{4}$ NW $\frac{1}{4}$ 1.2 ACRES
SW $\frac{1}{4}$ NW $\frac{1}{4}$ 33.8 ACRES
SE $\frac{1}{4}$ NW $\frac{1}{4}$ 36.6 ACRES
NE $\frac{1}{4}$ SW $\frac{1}{4}$ 34.3 ACRES
NW $\frac{1}{4}$ SW $\frac{1}{4}$ 26.1 ACRES
SW $\frac{1}{4}$ SW $\frac{1}{4}$ 29.4 ACRES
SE $\frac{1}{4}$ SW $\frac{1}{4}$ 40.0 ACRES
NE $\frac{1}{4}$ SE $\frac{1}{4}$ 34.0 ACRES
NW $\frac{1}{4}$ SE $\frac{1}{4}$ 40.0 ACRES
SW $\frac{1}{4}$ SE $\frac{1}{4}$ 33.2 ACRES
SE $\frac{1}{4}$ SE $\frac{1}{4}$ 20.3 ACRES

SECTION 11

TOWNSHIP 3 NORTH, RANGE 27 EAST, W.M.

Place of Use (continued):

NE ¼	NE ¼	19.8	ACRES
NW ¼	NE ¼	33.24	ACRES
SW ¼	NE ¼	33.1	ACRES
SE ¼	NE ¼	37.8	ACRES
NE ¼	NW ¼	32.82	ACRES
NW ¼	NW ¼	27.2	ACRES
SW ¼	NW ¼	29.0	ACRES
SE ¼	NW ¼	35.7	ACRES
NE ¼	SW ¼	28.8	ACRES
NW ¼	SW ¼	39.8	ACRES
SW ¼	SW ¼	29.9	ACRES
SE ¼	SW ¼	18.9	ACRES
NE ¼	SE ¼	36.2	ACRES
NW ¼	SE ¼	6.4	ACRES

SECTION 12

NE ¼	NE ¼	29.8	ACRES
NW ¼	NE ¼	32.2	ACRES
SW ¼	NE ¼	33.4	ACRES
SE ¼	NE ¼	36.1	ACRES
NE ¼	NW ¼	35.6	ACRES
NW ¼	NW ¼	37.5	ACRES
SW ¼	NW ¼	34.2	ACRES
SE ¼	NW ¼	21.0	ACRES
NE ¼	SW ¼	0.5	ACRE
NW ¼	SW ¼	35.5	ACRES
SW ¼	SW ¼	10.1	ACRES
NE ¼	SE ¼	32.3	ACRES
NW ¼	SE ¼	30.4	ACRES
SW ¼	SE ¼	35.6	ACRES
SE ¼	SE ¼	29.0	ACRES

SECTION 13

NE ¼	NE ¼	33.9	ACRES
NW ¼	NE ¼	39.2	ACRES
SW ¼	NE ¼	32.3	ACRES
SE ¼	NE ¼	33.6	ACRES
NE ¼	NW ¼	30.4	ACRES
NW ¼	NW ¼	21.0	ACRES
SW ¼	NW ¼	9.7	ACRES
SE ¼	NW ¼	32.5	ACRES
NE ¼	SW ¼	40.0	ACRES
NW ¼	SW ¼	15.5	ACRES
SE ¼	SW ¼	3.9	ACRES
NE ¼	SE ¼	39.6	ACRES
NW ¼	SE ¼	16.6	ACRES
SE ¼	SE ¼	12.7	ACRES

SECTION 14

TOWNSHIP 3 NORTH, RANGE 27 EAST, W.M.

Place of Use (continued):

NW ¼ NW ¼ 13.6 ACRES
SW ¼ NW ¼ 15.5 ACRES

SECTION 15

NE ¼ NE ¼ 33.9 ACRES
NW ¼ NE ¼ 12.7 ACRES
SW ¼ NE ¼ 13.4 ACRES
SE ¼ NE ¼ 38.0 ACRES
NE ¼ NW ¼ 37.7 ACRES
NW ¼ NW ¼ 25.53 ACRES
SW ¼ NW ¼ 24.53 ACRES
SE ¼ NW ¼ 37.4 ACRES
NE ¼ SW ¼ 30.7 ACRES
NW ¼ SW ¼ 31.4 ACRES
SW ¼ SW ¼ 32.5 ACRES
SE ¼ SW ¼ 31.9 ACRES

SECTION 16

NE ¼ NE ¼ 34.52 ACRES
NW ¼ NE ¼ 27.61 ACRES
SW ¼ NE ¼ 28.52 ACRES
SE ¼ NE ¼ 34.52 ACRES
NE ¼ NW ¼ 33.34 ACRES
NW ¼ NW ¼ 32.58 ACRES
SW ¼ NW ¼ 34.5 ACRES
SE ¼ NW ¼ 38.56 ACRES
NE ¼ SW ¼ 3.26 ACRES
NW ¼ SW ¼ 2.13 ACRES

SECTION 17

NE ¼ NE ¼ 31.25 ACRES
NW ¼ NE ¼ 31.25 ACRES
SW ¼ NE ¼ 31.25 ACRES
SE ¼ NE ¼ 31.25 ACRES
NE ¼ NW ¼ 31.25 ACRES
NW ¼ NW ¼ 31.25 ACRES
SW ¼ NW ¼ 31.25 ACRES
SE ¼ NW ¼ 31.25 ACRES
NE ¼ SE ¼ 37.7 ACRES
NW ¼ SE ¼ 18.3 ACRES
SW ¼ SE ¼ 18.0 ACRES
SE ¼ SE ¼ 37.3 ACRES

SECTION 19

TOWNSHIP 3 NORTH, RANGE 27 EAST, W.M.

Place of Use (continued):

SW ¼ NE ¼ 31.3 ACRES
SE ¼ NW ¼ 31.3 ACRES
NE ¼ SW ¼ 31.2 ACRES
NW ¼ SW ¼ 6.9 ACRES
SW ¼ SW ¼ 6.9 ACRES
NW ¼ SE ¼ 31.2 ACRES
SECTION 20

NE ¼ NE ¼ 26.1 ACRES
NW ¼ NE ¼ 24.7 ACRES
SW ¼ NE ¼ 34.0 ACRES
SE ¼ NE ¼ 35.0 ACRES
NE ¼ SE ¼ 2.0 ACRES
NW ¼ SE ¼ 1.9 ACRES
SECTION 23

NE ¼ NE ¼ 17.5 ACRES
NW ¼ NE ¼ 33.9 ACRES
SW ¼ NE ¼ 31.7 ACRES
SE ¼ NE ¼ 26.2 ACRES
NE ¼ SE ¼ 40.0 ACRES
NW ¼ SE ¼ 40.0 ACRES
SW ¼ SE ¼ 40.0 ACRES
SE ¼ SE ¼ 40.0 ACRES
SECTION 24

NE ¼ NE ¼ 40.0 ACRES
NW ¼ NE ¼ 40.0 ACRES
SW ¼ NE ¼ 21.6 ACRES
SE ¼ NE ¼ 0.1 ACRE
NE ¼ NW ¼ 40.0 ACRES
NW ¼ NW ¼ 15.1 ACRES
SW ¼ NW ¼ 22.9 ACRES
SE ¼ NW ¼ 34.6 ACRES
NE ¼ SW ¼ 7.9 ACRES
NW ¼ SW ¼ 40.0 ACRES
SW ¼ SW ¼ 36.9 ACRES
SE ¼ SW ¼ 5.7 ACRES
NE ¼ SE ¼ 38.0 ACRES
NW ¼ SE ¼ 6.0 ACRES
SW ¼ SE ¼ 26.0 ACRES
SE ¼ SE ¼ 40.0 ACRES
SECTION 25

TOWNSHIP 3 NORTH, RANGE 27 EAST, W.M.

Place of Use (continued):

NE ¼ NE ¼ 13.5 ACRES
NW ¼ NE ¼ 1.5 ACRES
SW ¼ NE ¼ 3.5 ACRES
SE ¼ NE ¼ 40.0 ACRES
NE ¼ NW ¼ 5.15 ACRES
NW ¼ NW ¼ 21.25 ACRES
SW ¼ NW ¼ 28.25 ACRES
SE ¼ NW ¼ 11.45 ACRES
NE ¼ SW ¼ 31.25 ACRES
NW ¼ SW ¼ 31.25 ACRES
SW ¼ SW ¼ 31.25 ACRES
SE ¼ SW ¼ 31.25 ACRES
NE ¼ SE ¼ 29.02 ACRES
SE ¼ SE ¼ 24.13 ACRES

SECTION 26

NW ¼ NW ¼ 20.2 ACRES
SW ¼ NW ¼ 19.3 ACRES
NE ¼ SW ¼ 9.1 ACRES
NW ¼ SW ¼ 18.1 ACRES
SW ¼ SW ¼ 17.7 ACRES
SE ¼ SW ¼ 9.7 ACRES
NE ¼ SE ¼ 12.2 ACRES
NW ¼ SE ¼ 36.3 ACRES
SW ¼ SE ¼ 37.5 ACRES
SE ¼ SE ¼ 12.7 ACRES

SECTION 27

NE ¼ NE ¼ 37.4 ACRES
NW ¼ NE ¼ 5.8 ACRES
SW ¼ NE ¼ 5.8 ACRES
SE ¼ NE ¼ 36.5 ACRES
NE ¼ SE ¼ 38.1 ACRES
NW ¼ SE ¼ 7.0 ACRES
SW ¼ SE ¼ 6.9 ACRES
SE ¼ SE ¼ 37.2 ACRES

SECTION 28

TOWNSHIP 3 NORTH, RANGE 27 EAST, W.M.

Place of Use (continued):

NE ¼ NE ¼ 34.75 ACRES
NW ¼ NE ¼ 20.75 ACRES
SW ¼ NE ¼ 13.15 ACRES
SE ¼ NE ¼ 34.25 ACRES
SW ¼ NW ¼ 5.95 ACRES
SE ¼ NW ¼ 10.35 ACRES
NE ¼ SW ¼ 39.45 ACRES
NW ¼ SW ¼ 36.15 ACRES
SW ¼ SW ¼ 28.1 ACRES
SE ¼ SW ¼ 36.2 ACRES
NE ¼ SE ¼ 39.65 ACRES
NW ¼ SE ¼ 33.75 ACRES
SW ¼ SE ¼ 20.45 ACRES
SE ¼ SE ¼ 37.35 ACRES

SECTION 34

NW ¼ NE ¼ 3.4 ACRES
SW ¼ NE ¼ 1.8 ACRES
NE ¼ NW ¼ 31.25 ACRES
NW ¼ NW ¼ 31.25 ACRES
SW ¼ NW ¼ 31.25 ACRES
SE ¼ NW ¼ 31.25 ACRES
NW ¼ SW ¼ 22.6 ACRES
SW ¼ SW ¼ 17.2 ACRES

SECTION 35

NE ¼ NE ¼ 40.0 ACRES
NW ¼ NE ¼ 40.0 ACRES
SW ¼ NE ¼ 40.0 ACRES
SE ¼ NE ¼ 40.0 ACRES
NE ¼ NW ¼ 11.88 ACRES
SW ¼ NW ¼ 7.35 ACRES
SE ¼ NW ¼ 40.0 ACRES
NE ¼ SW ¼ 40.0 ACRES
NW ¼ SW ¼ 18.35 ACRES
SW ¼ SW ¼ 22.14 ACRES
SE ¼ SW ¼ 40.0 ACRES
NE ¼ SE ¼ 40.0 ACRES
NW ¼ SE ¼ 40.0 ACRES
SW ¼ SE ¼ 40.0 ACRES
SE ¼ SE ¼ 40.0 ACRES

SECTION 36

TOWNSHIP 3 NORTH, RANGE 27 EAST, W.M.

Place of Use (continued):

NE ¼ NW ¼ 28.69 ACRES
NW ¼ NW ¼ 25.0 ACRES
SW ¼ NW ¼ 22.03 ACRES
SE ¼ NW ¼ 35.0 ACRES
NE ¼ SW ¼ 25.0 ACRES
NW ¼ SW ¼ 19.19 ACRES
SW ¼ SW ¼ 28.83 ACRES
SE ¼ SW ¼ 28.7 ACRES

SECTION 6

NE ¼ NW ¼ 34.7 ACRES
NW ¼ NW ¼ 31.9 ACRES
SW ¼ NW ¼ 29.2 ACRES
SE ¼ NW ¼ 23.5 ACRES
NE ¼ SW ¼ 31.1 ACRES
NW ¼ SW ¼ 24.0 ACRES
SW ¼ SW ¼ 22.8 ACRES
SE ¼ SW ¼ 30.1 ACRES

SECTION 7

NE ¼ NW ¼ 35.6 ACRES
NW ¼ NW ¼ 34.0 ACRES
SW ¼ NW ¼ 33.5 ACRES
SE ¼ NW ¼ 17.4 ACRES
NE ¼ SW ¼ 20.0 ACRES
NW ¼ SW ¼ 39.1 ACRES
SW ¼ SW ¼ 0.9 ACRE

SECTION 18

NW ¼ SW ¼ 36.0 ACRES
SW ¼ SW ¼ 33.0 ACRES

SECTION 19

SW ¼ NE ¼ 16.4 ACRES
NW ¼ NW ¼ 16.0 ACRES
SW ¼ NW ¼ 38.0 ACRES
SE ¼ NW ¼ 40.0 ACRES
NE ¼ SW ¼ 40.0 ACRES
NW ¼ SW ¼ 37.1 ACRES
SW ¼ SW ¼ 37.3 ACRES
SE ¼ SW ¼ 40.0 ACRES
NE ¼ SE ¼ 20.4 ACRES
NW ¼ SE ¼ 25.6 ACRES
SW ¼ SE ¼ 16.7 ACRES
SE ¼ SE ¼ 28.0 ACRES

SECTION 30

TOWNSHIP 3 NORTH, RANGE 28 EAST, W.M.

Place of Use (continued):

NE ¼ NW ¼	22.0	ACRES
NW ¼ NW ¼	38.0	ACRES
SW ¼ NW ¼	39.0	ACRES
SE ¼ NW ¼	3.0	ACRES
NE ¼ SW ¼	35.7	ACRES
NW ¼ SW ¼	34.5	ACRES
SW ¼ SW ¼	16.6	ACRES
SE ¼ SW ¼	37.0	ACRES
NW ¼ SE ¼	9.0	ACRES
SW ¼ SE ¼	9.0	ACRES

SECTION 31

NE ¼ SW ¼	31.3	ACRES
NW ¼ SW ¼	31.3	ACRES
SW ¼ SW ¼	31.2	ACRES
SE ¼ SW ¼	31.2	ACRES
NE ¼ SE ¼	6.7	ACRES
NW ¼ SE ¼	31.3	ACRES
SW ¼ SE ¼	31.2	ACRES
SE ¼ SE ¼	31.2	ACRES

SECTION 32

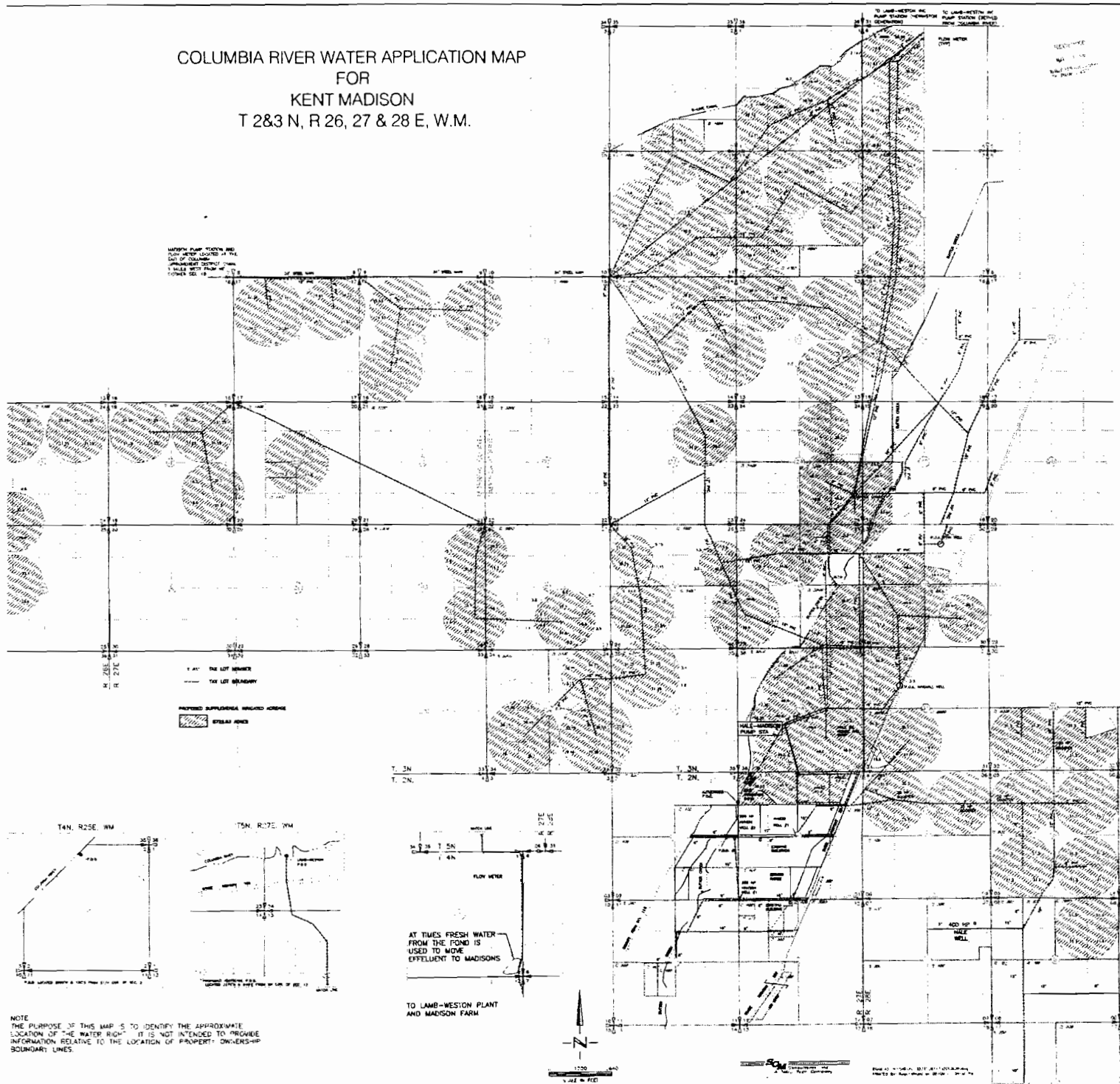
TOWNSHIP 3 NORTH, RANGE 28 EAST, W.M.

14 DAY STOP PROCESSING DEADLINE DATE: Friday, February 29, 2008

PUBLIC NOTICE DATE: Tuesday, February 19, 2008

30 DAY COMMENT DEADLINE DATE: Thursday, March 20, 2008

COLUMBIA RIVER WATER APPLICATION MAP
 FOR
 KENT MADISON
 T 2&3 N, R 26, 27 & 28 E, W.M.



LAMB WESTON DELEVRY SYSTEM CONNECTION TO MADISON FARM

DATE: 12/04/07
APP: 5-86866

P.O.D.
LOCATED 2270'N & 940'E FROM SW1/4 COR
OF SEC 13, T5N, R27E WM
(LOT 4, NW1/4, SW1/4 SEC 13 T5N, R27E

