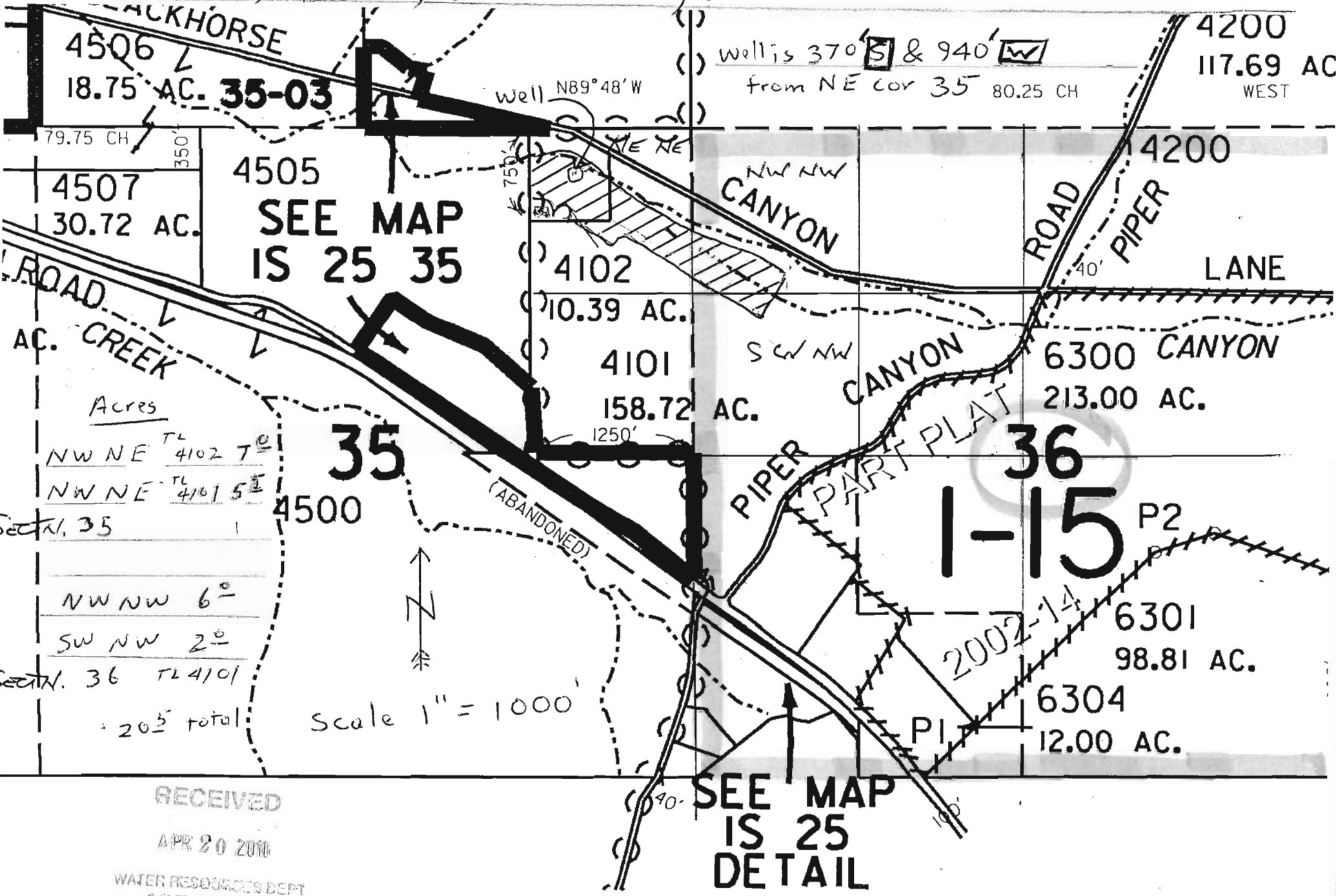


WORK COPY

T1S, R25E, Sec 35 NE NE - Sec 36 NW NW & SW NW



Acres

NW NE TL 4102 7<sup>0</sup>

NW NE TL 4101 5<sup>1</sup>

Section 35

NW NW 6<sup>0</sup>

SW NW 2<sup>0</sup>

Section 36 TL 4101

20<sup>5</sup> total

RECEIVED

APR 20 2010

WATER RESOURCES DEPT  
SALEM, OREGON

T15, R25E, Sec 35 NE NE - Sec 36 NW NW & SW NW

4506  
18.75 AC. 35-03

Well is 370's. & 940'E  
from NE cor 35 80.25 CH

4200  
117.69 AC  
WEST

Well N89°48'W

79.75 CH  
350'  
4507  
30.72 AC.

4505  
**SEE MAP  
IS 25 35**

4102  
10.39 AC.

CANYON

4200  
ROAD  
40'  
PIPER  
LANE

ROAD  
AC. CREEK

4101  
158.72 AC.

6300 CANYON  
213.00 AC.

Acres  
NW NE TL 4102 7°  
NW NE TL 4101 5°  
35

35

(ABANDONED)

PIPER

CANYON  
PART PLAT

36

1-15 P2

NW NW 6°  
SW NW 2°  
36 TL 4101

4500



Scale 1" = 1000'

2002-14  
6301  
98.81 AC.

6304  
12.00 AC.

RECEIVED

APR 20 2010

WATER RESOURCES DEPT  
SALEM, OREGON

**SEE MAP  
IS 25  
DETAIL**