

DLC

43

DLC

44

23

24

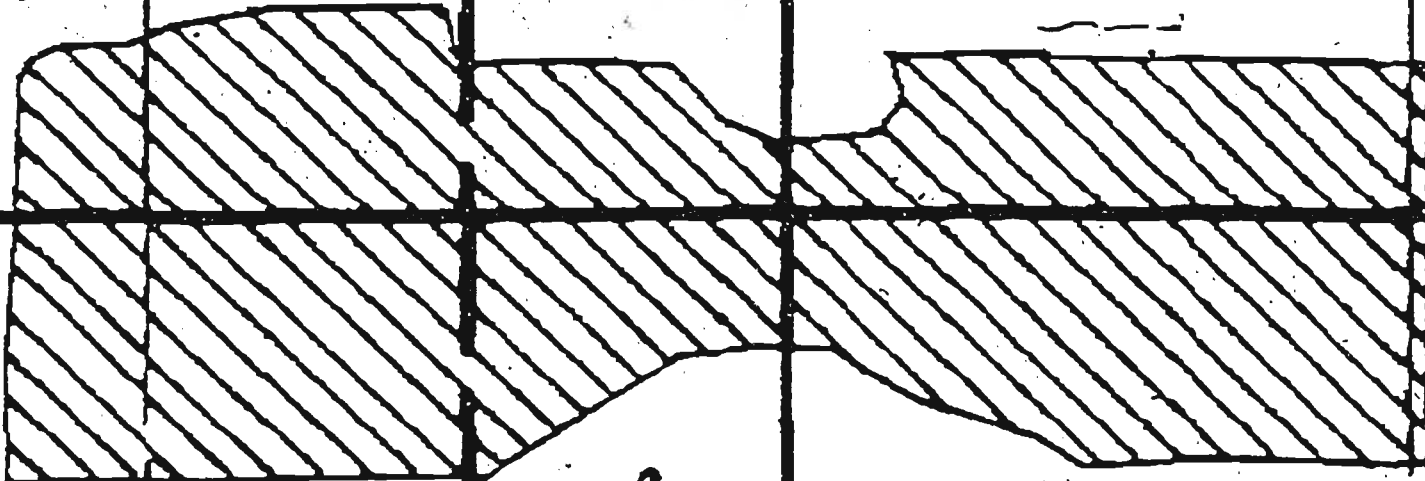
A

24

64

46

92



03

Div. Pt.

03

RECEIVED
 APR 29 2010
 WATER RESOURCES DEPT
 SALEM, OREGON

36

82

58

135

26

25

PART

SECTION 25 T.3S. R.1E. W.M.
CLACKAMAS COUNTY

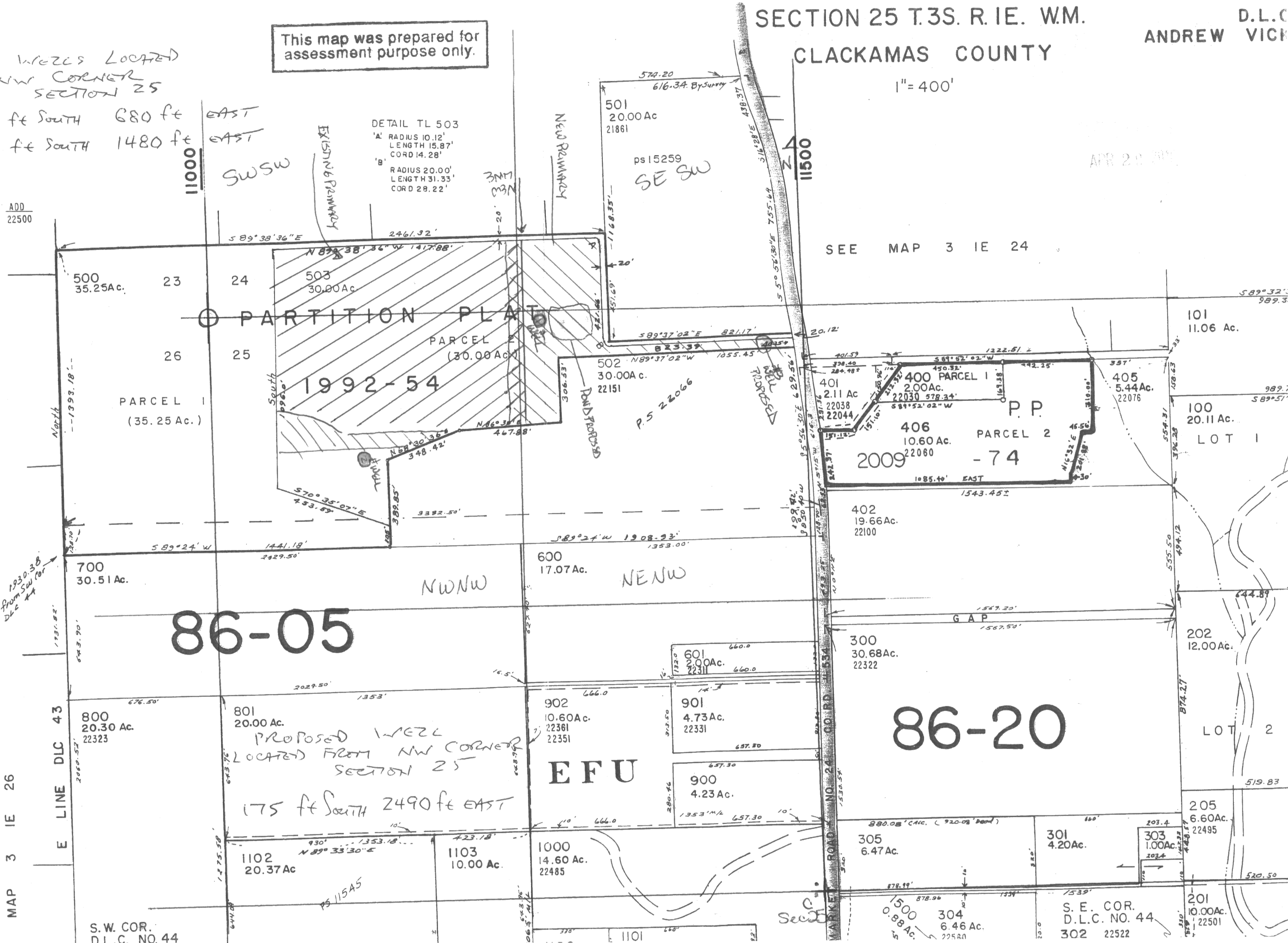
1" = 400'

This map was prepared for
assessment purpose only.

BOTH WELLS LOCATED
FROM NW CORNER
SECTION 25
WELL #2 650 ft SOUTH 680 ft EAST
WELL #1 40 ft SOUTH 1480 ft EAST

Will Gumbelius
AGREE WITH MAP
AND ANP CORRECTIONS AND STAS
29-APRIL-2010

TL
303
ADD
22500



86-05

86-20

EFU

PROPOSED WELLS
LOCATED FROM NW CORNER
SECTION 25
175 ft SOUTH 2490 ft EAST

MAP 3 IE 26
E LINE DLC 43

S.W. COR.
D.L.C. NO. 44

S. E. COR.
D.L.C. NO. 44
302 22522

201
10.00Ac.
22501

SEE MAP 3 IE 24

APR 20 2010

This map was prepared for assessment purpose only.

SECTION 25 T.3S. R. 1E. WM.
CLACKAMAS COUNTY

D.L.C.'S
ANDREW VICKERS NO. 44

3 IE

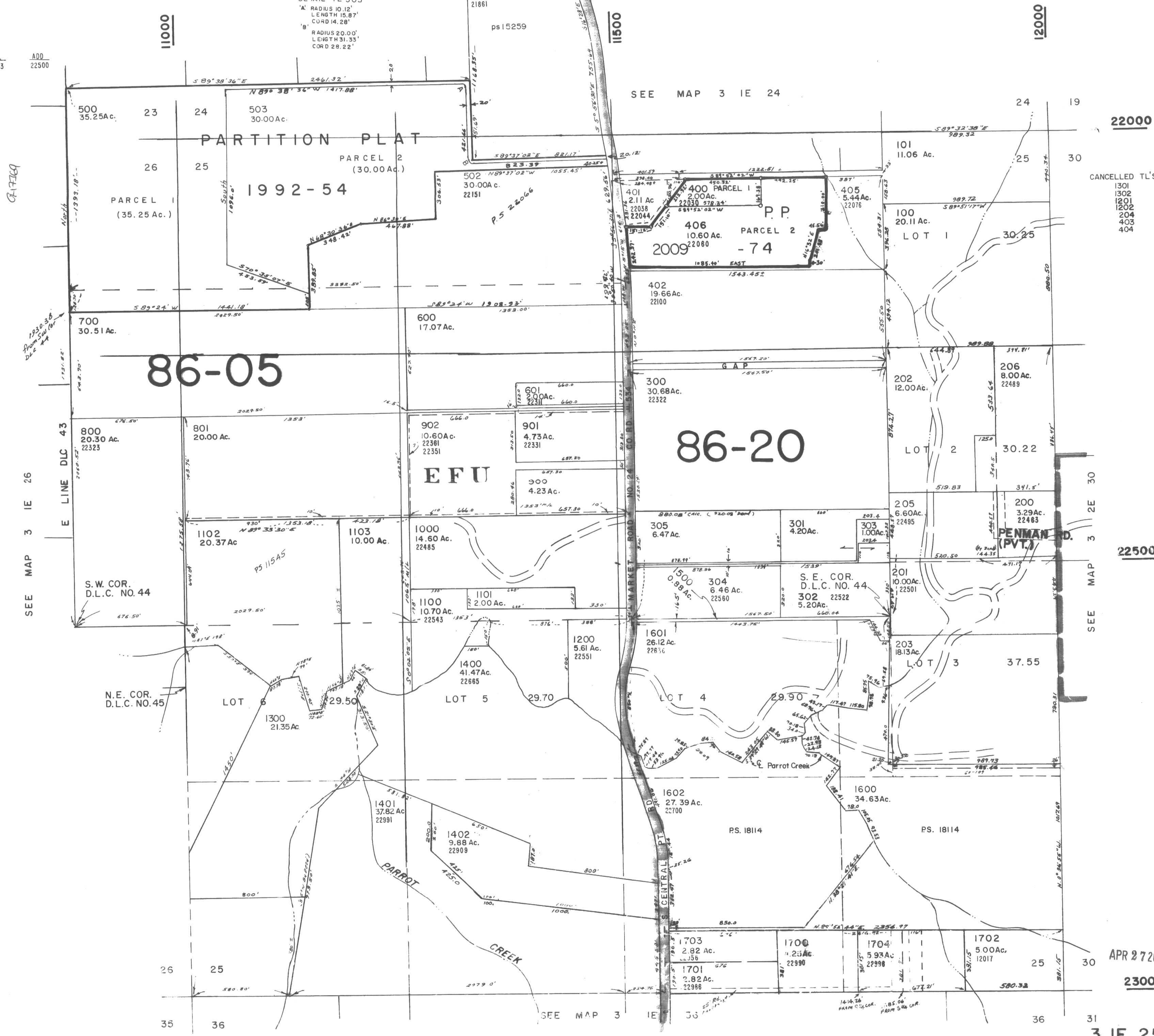
1" = 400'

TL
303
ADD
22500

FIELD

SEE MAP 3 IE 26
E LINE D.L.C. 43

CANCELLED TL'S
1301
1302
1201
1202
204
403
404



22000

22500

APR 27 2010

23000

31
3 IE 25