

SEC. 15 T. 12S. R. 01W

Tax Lot 300

Tax Lot 305

Creek

Creek

island

Pond

island

1/4 NW  
1/4 SW

960 feet  
from 1/4/1/4  
to Dam

Dam  
111'

Drain Pipe

over flow Pipe

WATER RESOURCES DEPT  
SALEM, OREGON

RECEIVED  
APR 07 2009

WATER RESOURCES DEPT  
SALEM, OREGON

MAY 06 2010

RECEIVED

10978-21

OLD



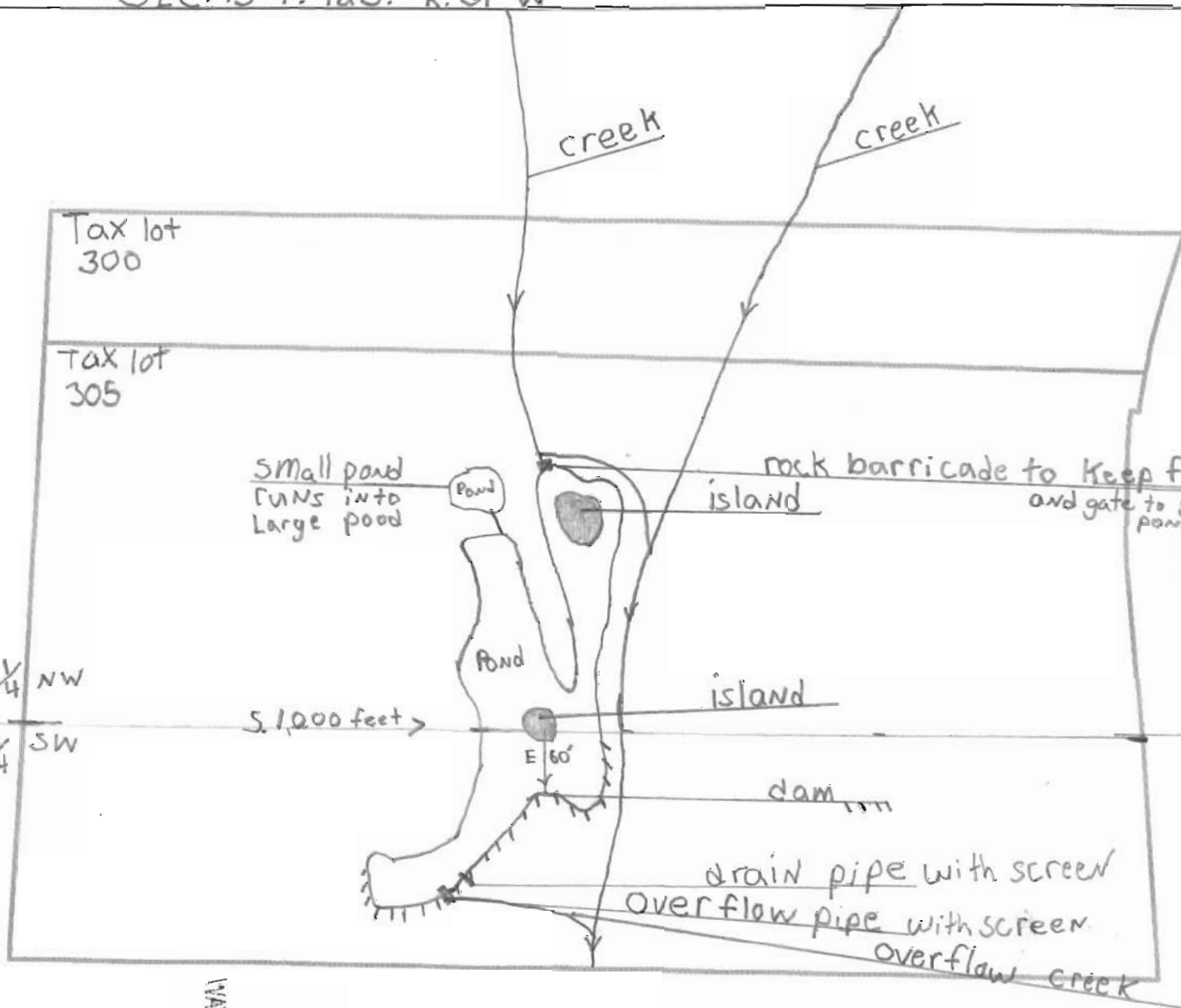
1 inch = 200 feet

Linn County  
GIS Department  
P.O. Box 100  
Albany, OR 97321



Linn County Disclaimer  
This product is for informational purposes only and may not have been prepared for, or be suitable for legal, engineering, or surveying purposes. Users of this information should review or consult the primary data and information sources to ascertain the reliability of this information.

SEC. 15 T. 12S. R. 01 W



← ← 1/4 1/4  
 1/4 NW  
 1/4 SW

S. 1,000 feet →

E 60'

Dam 1,000 feet south  
 and 60 feet east of  
 1/4 1/4 SEC. 15

RECEIVED  
 MAY 08 2010  
 WATER RESOURCES DEPT  
 SALEM, OREGON

4878-21



1 inch = 200 feet

Linn County  
 GIS Department  
 P.O. Box 100  
 Albany, OR 97321



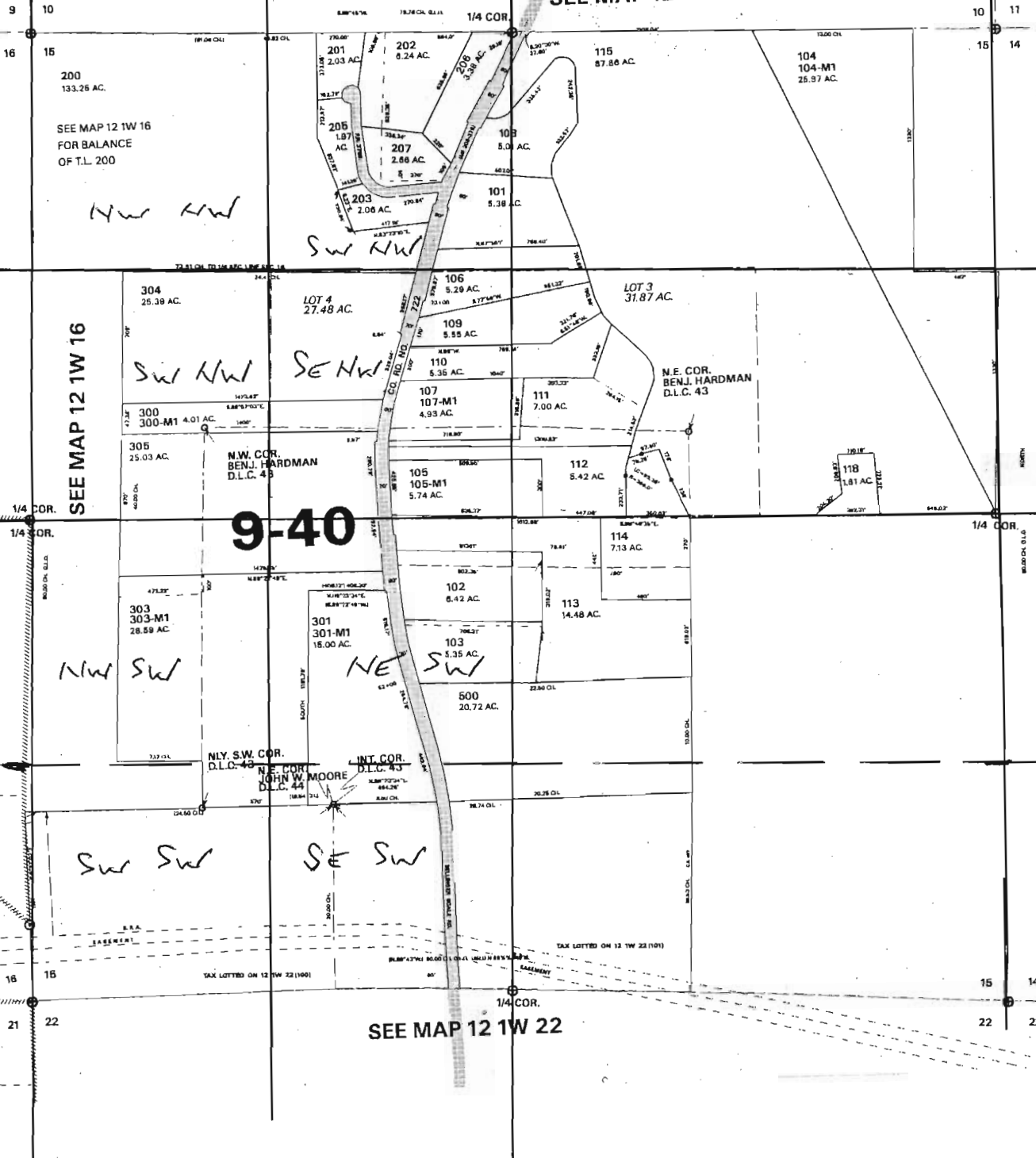
**Linn County Disclaimer**  
 This product is for informational purposes only and may not have been prepared for, or be suitable for legal, engineering, or surveying purposes. Users of this information should review or consult the primary data and information sources to ascertain the reliability of this information.

MAP WAS PREPARED FOR  
RECORDATION PURPOSES ONLY

SEC. 15 T. 12S. R. 01W. W.M.  
LINN COUNTY, OREGON

1" = 400'

SEE MAP 12 1W 10



SEE MAP 12 1W 16

SEE MAP 12 1W 14

9-40

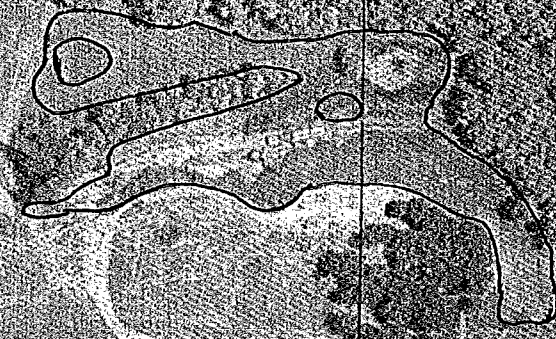
SEE MAP 12 1W 22

R-97604

Sec. 10 T. 12S R. 01W

300

305



RECEIVED

APR 07 2009

WATER RESOURCES DEPT  
SALEM, OREGON



1 inch = 200 feet



Linn County  
GIS Department  
P.O. Box 100  
Albany, OR 97321

**Linn County Disclaimer**

This product is for informational purposes only and may not have been prepared for, or be suitable for legal, engineering, or surveying purposes. Users of this information should review or consult the primary data and information sources to ascertain the