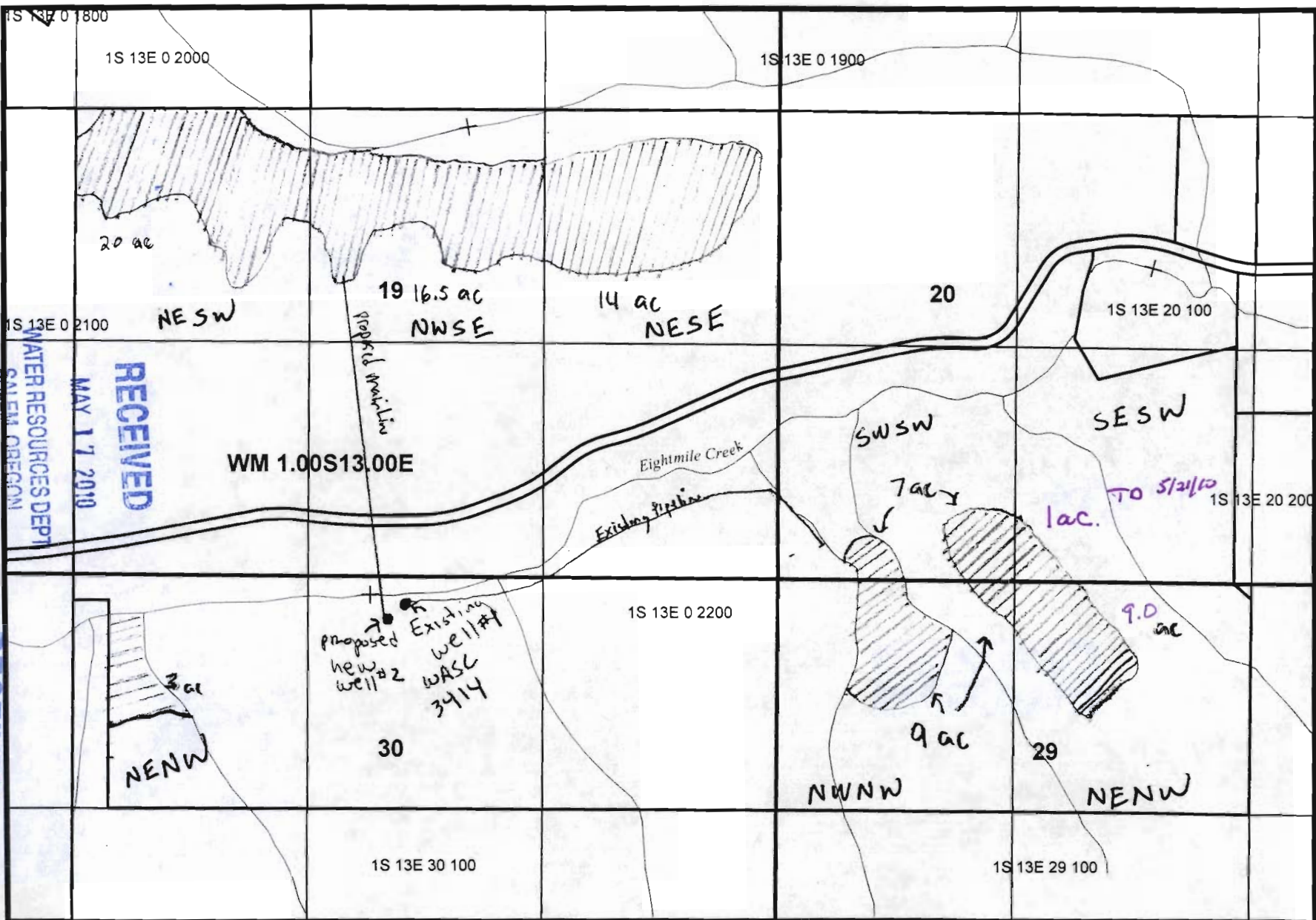


# 1S 13E 0 2200

G-1738C



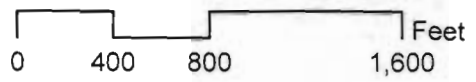
well # 1 (Wasc 3414) is 2080' west and 160' south of the northeast corner, section 30.  
 well # 2 (proposed) will be 2160' west and 240' south of the northeast corner, section 30.



RECEIVED

MAY 21 2010

WATER RESOURCES DEPT  
 SALEM, OREGON



MAY 21 2010

RECEIVED

WATER RESOURCES DEPT  
 SALEM, OREGON

WATER RESOURCES DEPT  
 SALEM, OREGON

MAY 17 2010

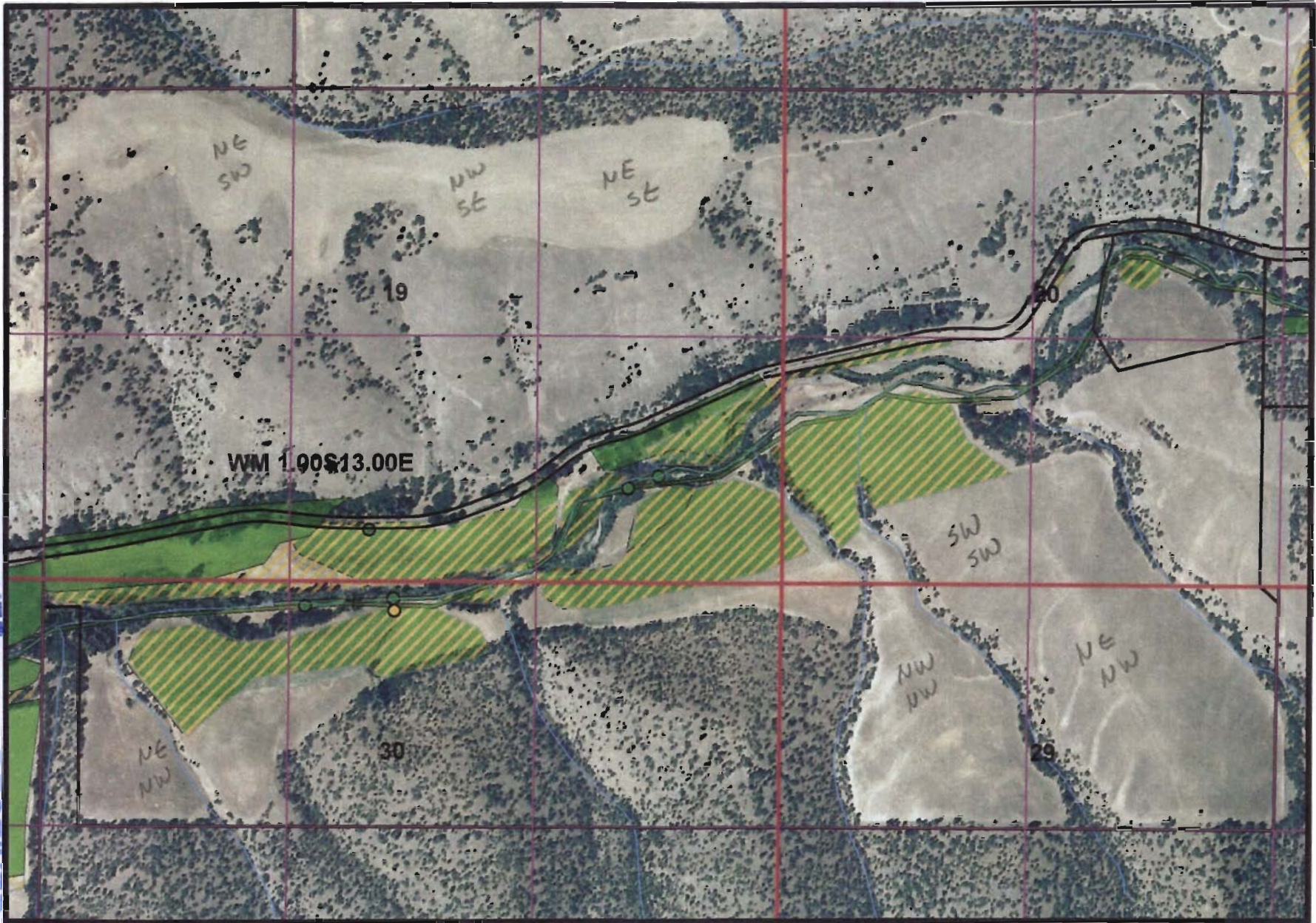
RECEIVED

1S 13E 0 2200



Oregon Water Resources Department  
District 3 Watermaster

G-17386



RECEIVED

MAY 17 2010

WATER RESOURCES DEPT  
SALEM, OREGON

RECEIVED

MAY 21 2010

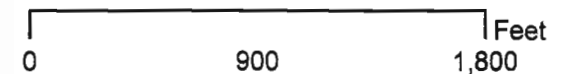
WATER RESOURCES DEPT  
SALEM, OREGON

The water rights shown on this map have been interpreted by the District 3 Watermaster from information in the Department's files and are intended to represent that interpretation graphically. Locations shown are only approximate.

RECEIVED

MAY 21 2010

WATER RESOURCES DEPT  
SALEM, OREGON

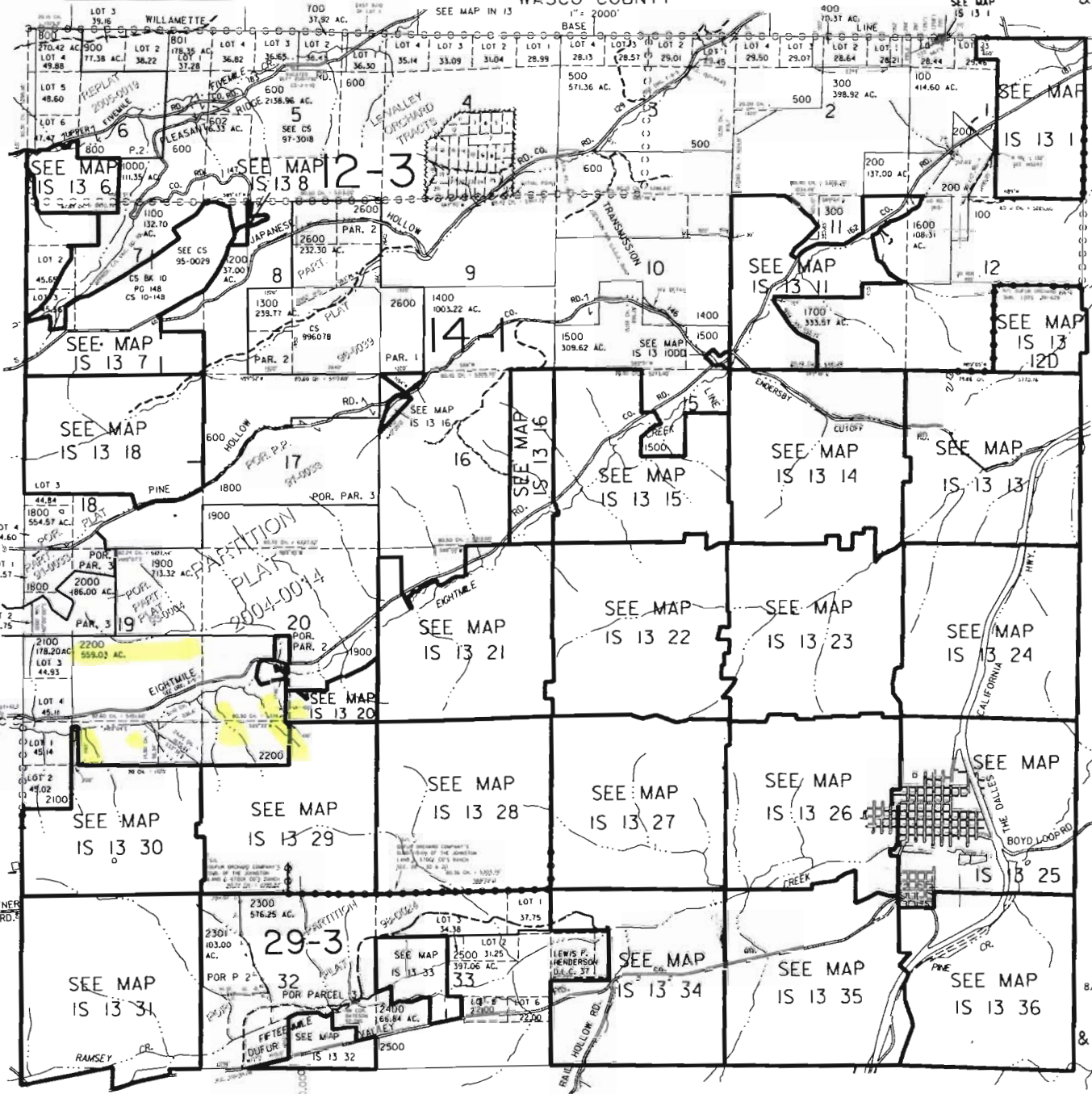


98317386  
Added 5-17-10  
KJK

THIS MAP WAS PREPARED FOR  
ASSESSMENT PURPOSE ONLY

T.1S. R.13E. W.M.  
WASCO COUNTY

IS 13  
& INDEX  
DUFUR



CANCELLED NO.  
601  
802  
C C

INSERT  
PARCEL 100  
1" = 400'

SEE MAP IS 14

650,000

Revised  
8/9/2006, DLW  
IS 13  
& INDEX  
DUFUR

SEE MAP 2S 13

RECEIVED  
MAY 21 2010  
WATER RESOURCES DEPT  
SALEM, OREGON

RECEIVED  
MAY 21 2010  
WATER RESOURCES DEPT  
SALEM, OREGON

PARCEL 2301  
SEC. 32

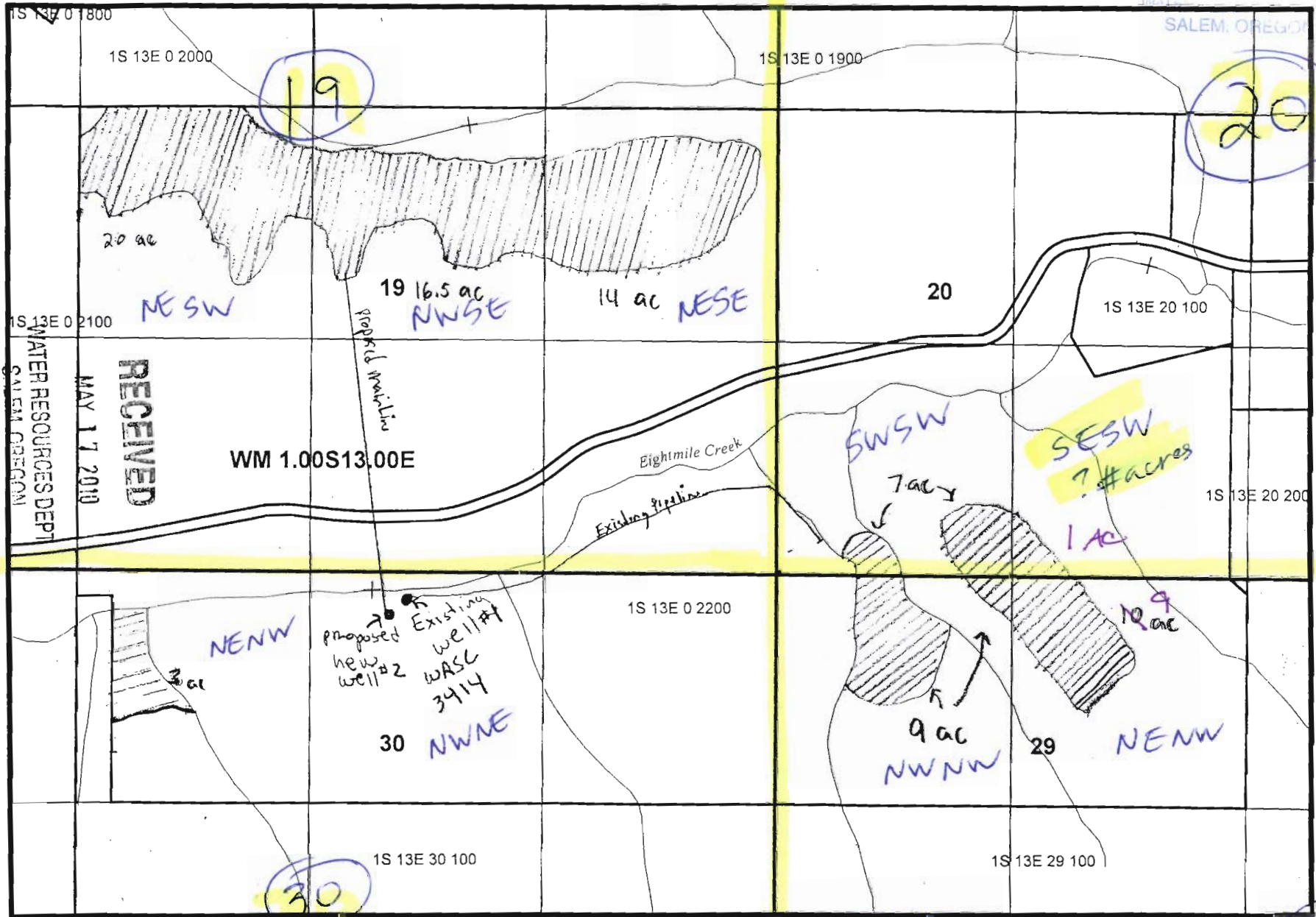
1.	107'x107'	21.97'
2.	107'x107'	21.97'
3.	107'x107'	21.97'
4.	107'x107'	21.97'
5.	107'x107'	21.97'
6.	107'x107'	21.97'
7.	107'x107'	21.97'
8.	107'x107'	21.97'
9.	107'x107'	21.97'
10.	107'x107'	21.97'
11.	107'x107'	21.97'
12.	107'x107'	21.97'
13.	107'x107'	21.97'
14.	107'x107'	21.97'
15.	107'x107'	21.97'
16.	107'x107'	21.97'
17.	107'x107'	21.97'
18.	107'x107'	21.97'
19.	107'x107'	21.97'
20.	107'x107'	21.97'
21.	107'x107'	21.97'
22.	107'x107'	21.97'
23.	107'x107'	21.97'
24.	107'x107'	21.97'
25.	107'x107'	21.97'
26.	107'x107'	21.97'
27.	107'x107'	21.97'
28.	107'x107'	21.97'
29.	107'x107'	21.97'
30.	107'x107'	21.97'
31.	107'x107'	21.97'
32.	107'x107'	21.97'
33.	107'x107'	21.97'
34.	107'x107'	21.97'
35.	107'x107'	21.97'
36.	107'x107'	21.97'

1S 13E 0 2200

WORK COPY - mRm 5/21 RECEIVED

MAY 21 2010

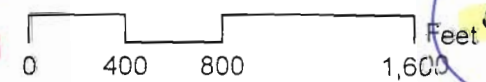
9-17-06



well # 1 (wasc 3414) is 2080' west and 160' south of the northeast corner, section 30.  
 well # 2 (proposed) will be 2160' west and 240' south of the northeast corner, section 30.



RECEIVED  
 MAY 21 2010  
 WATER RESOURCES DEPT  
 SALEM, OREGON



29