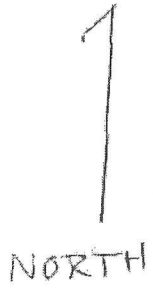


MAP #1

APP. G-17397

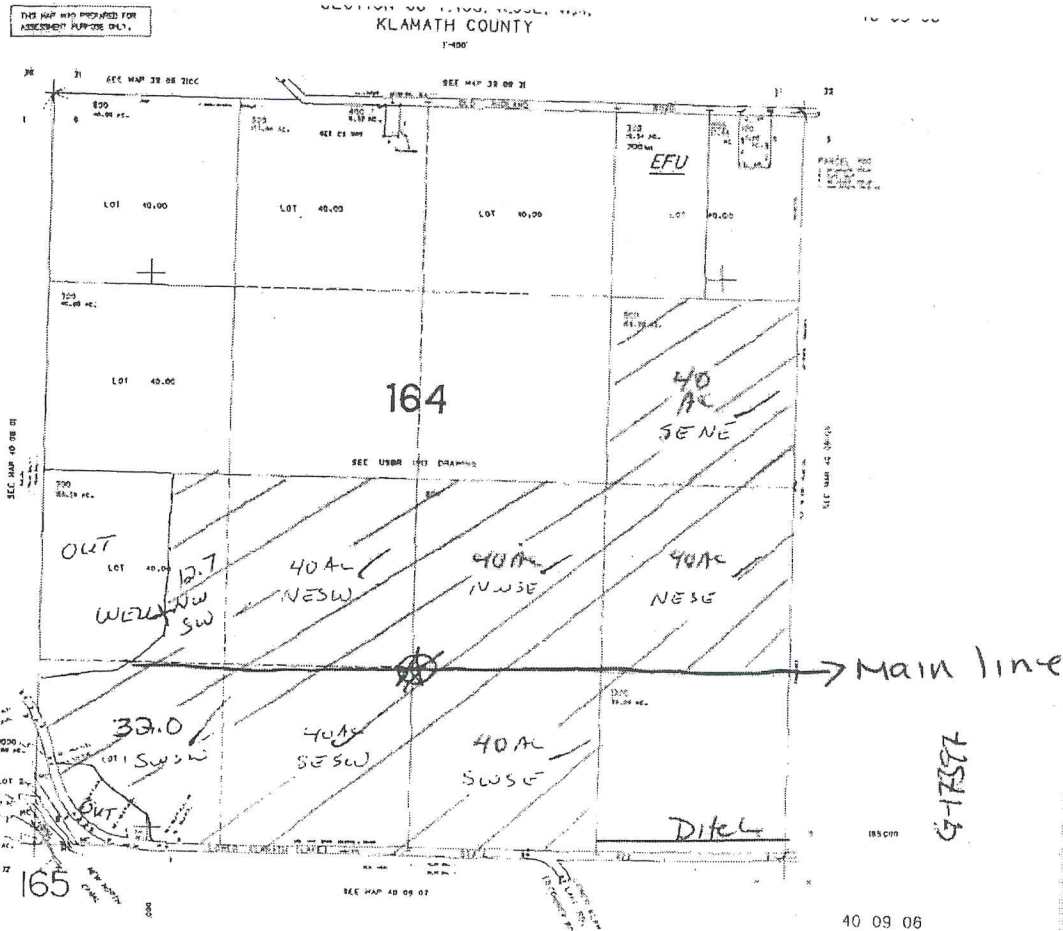


1" = 1320'
SCALE

T. 40S R09E
SEC 06
TL 800
900

⊗ - Pivot
and
Wheel lines

Proposed well
Location
835 FT W
80 FT N
of 1/16 corner
SW corner
SE corner,
N 1/4 SW, sec 6



RECEIVED
OCT 26 2011
WATER RESOURCES DEPT.
SALEM, OREGON

RECEIVED

JUN 04 2010

WATER RESOURCES DEPT.
SALEM, OREGON

4-17397

MAP # 2

APP

G-17397

↑
NORTH

RECEIVED
OCT 26 2011
WATER RESOURCES DEPT
SALEM, OREGON

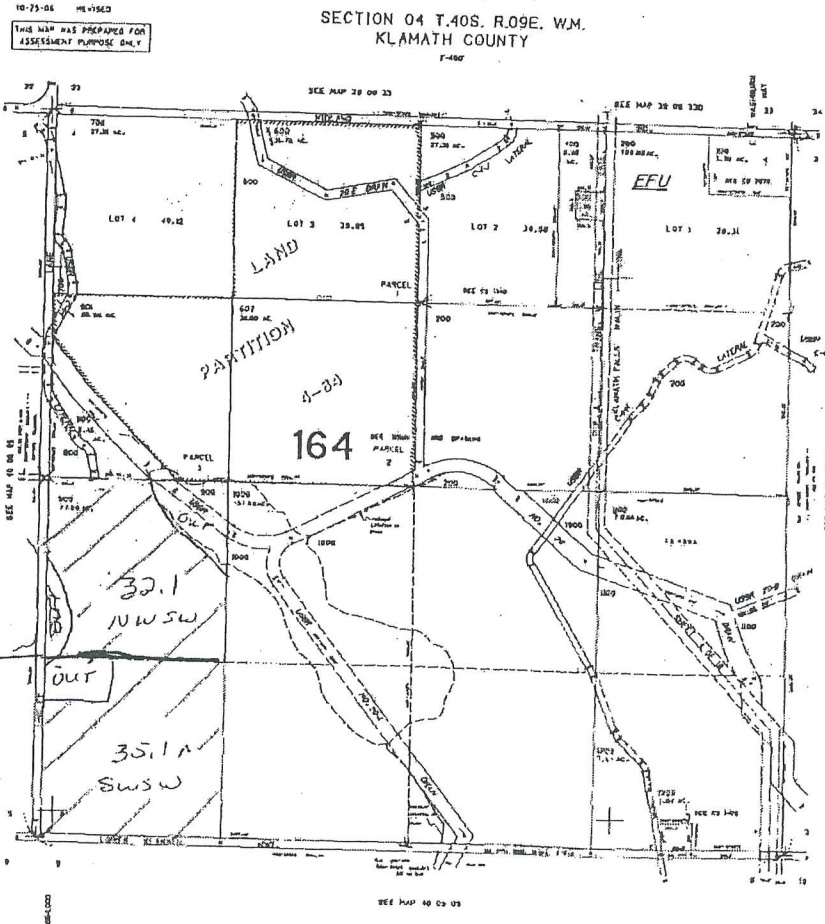
RECEIVED

JUN 04 2010
WATER RESOURCES DEPT
SALEM, OREGON

T-40 S. R09E
SEC 4
TL 900
1" - 1320'

Wheel lines

main line



40 09 04

9-17397

40 09 04

MAP #3

THIS MAP WAS PREPARED FOR ADDRESS ONLY.

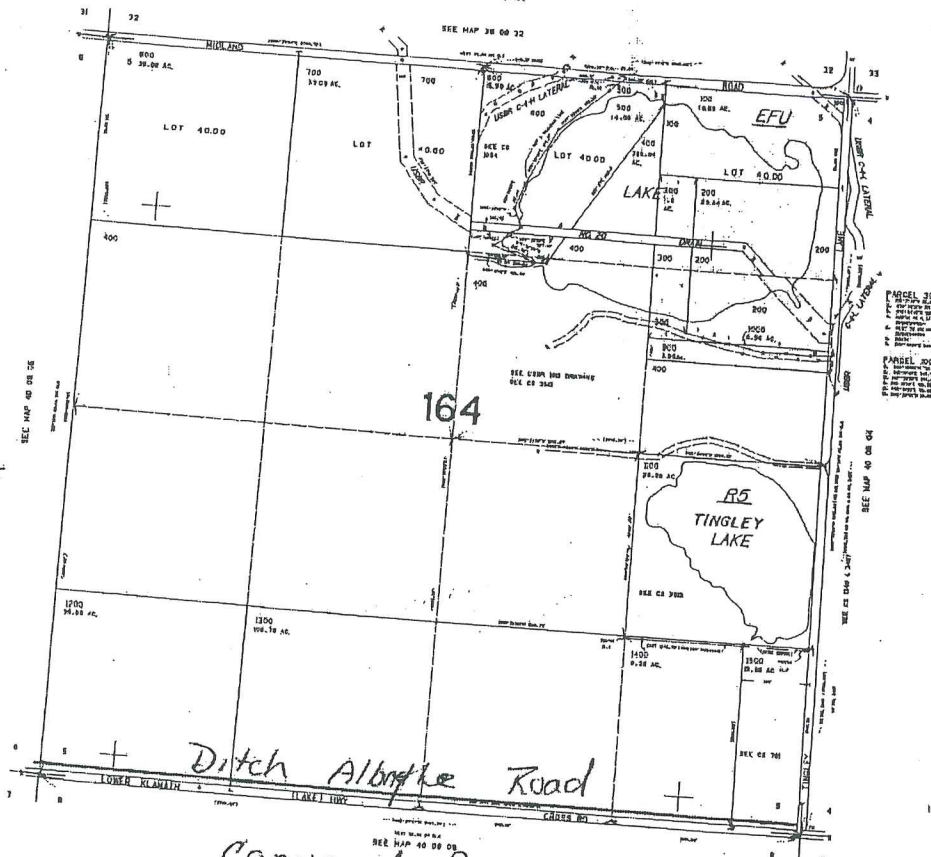
SECTION 05 T.40S. R.09E. W.M.
KLAMATH COUNTY
T-400

40 09 05

App # 6-17397

NORTH

T40S R09E
SEC. 5



RECEIVED

OCT 26 2011

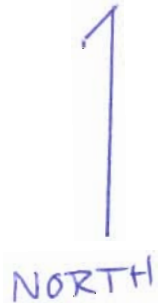
WATER RESOURCES DEPT
SALEM, OREGON

Conveyed from
Section 6 - to Sect 4
Ditch along County Road

SCALE 1" = 1320'

40 09 05

MAP #1

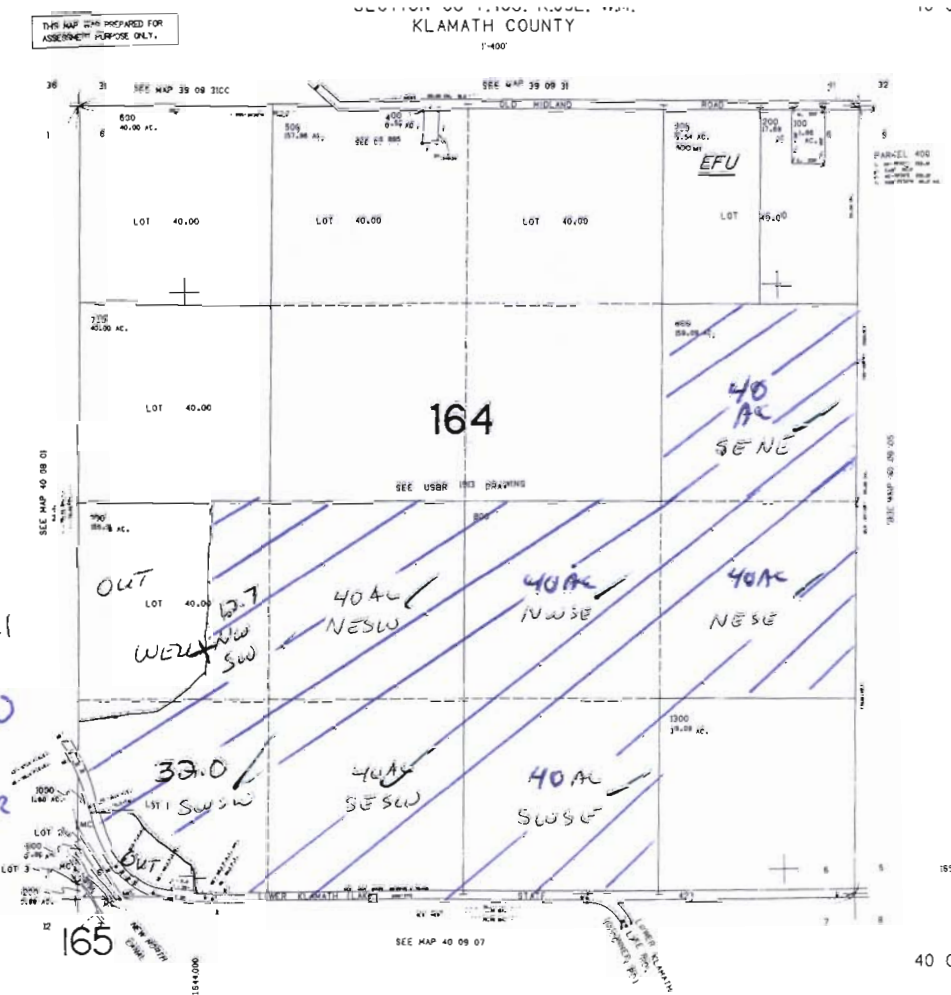


1" = 1320'
SCALE

T. 40S R09E
SEC 06
TL 800
900

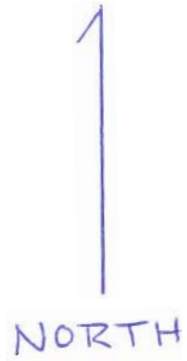
Proposed well
Location
835 FT W
80 FT N
of 1/16 CORNER
SW CORNER

RECEIVED
JUN 04 2010
WATER RESOURCES DEPT
SALEM, OREGON



6-1757

MAP # 2



T-40 S R09E
SEC 4
TL 900
1" - 1320'

RECEIVED
JUN 04 2010
WATER RESOURCES DEPT
SALEM, OREGON



GH7597

MAP 1#



RECEIVED

JUN 04 2010

WATER RESOURCES DEPT
SALEM, OREGON

USDA / Farm Service Agency
Klamath County

Farm 3852 Tract 223
Total cropland 294.7 acres



Disclaimer:

* This acreage is for FSA program purposes only. No warranty is made for any other use.

G-17397

map #2

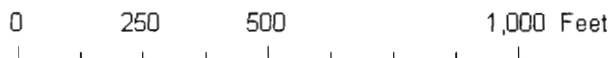


USDA / Farm Service Agency
Klamath County

Farm 3852 Tract 741

Wetland Determination Identifiers

- Restricted Use
- Limited Restrictions
- Exempt from Conservation Compliance Provisions



Disclaimers:

* Wetland identifiers do not represent the size, shape or specific determination of the area. Refer to your original determination (CPA-026 and attached maps) for exact wetland boundaries and determinations, or contact NRCS.

* This acreage is for FSA program purposes only. No warranty is made for any other use.

G-17397