

R-87617

NE 1/4 SECTION 5 T2S R3W W.M.

REVISED ADJUSTED
"APPROX SCALE 32" 33 1" = 300'

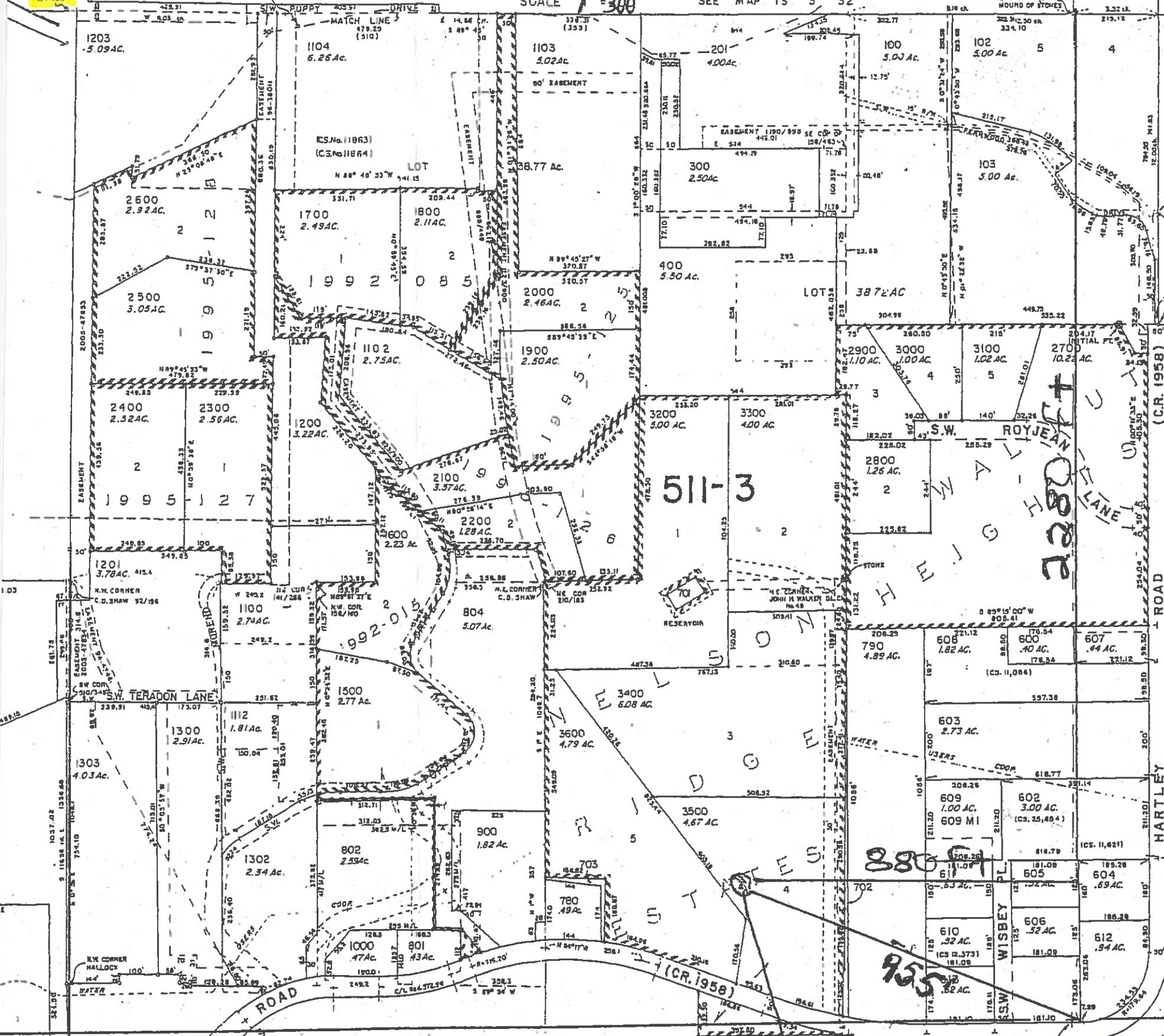
WASHINGTON COUNTY OREGON

SCALE 1" = 300'

SEE MAP 15 3 32

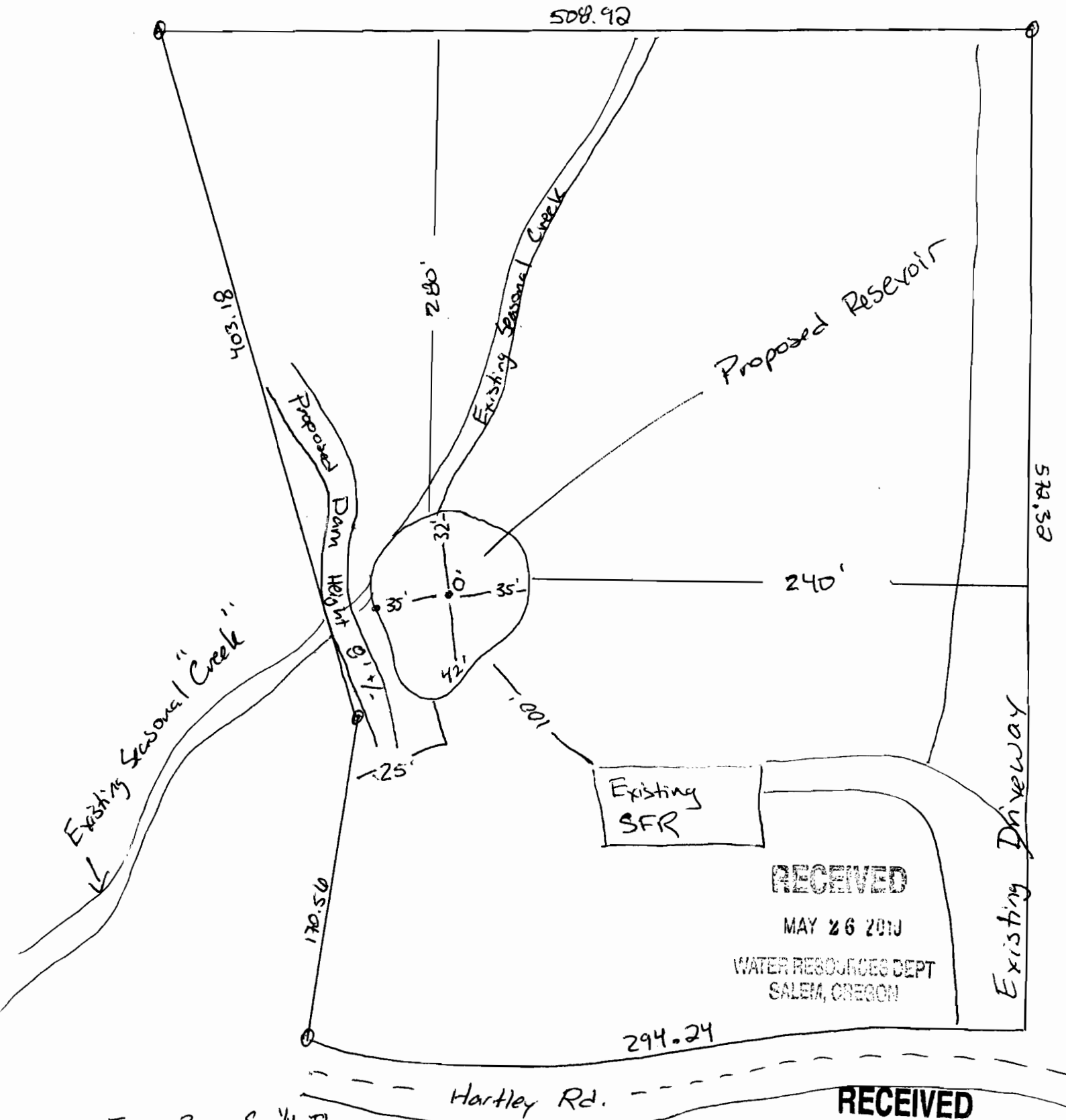
CANCELLED TAX LOTS
1301, 290, 761, 1223, 200,
1102-71, 1108-71, 1104-71
1402, 207, 1179, 1107, 1108,
1101, 1106, 101, 800, 801, 801,
1155, 1110, 1111, 1129,
500, 790, 770.

RECEIVED



SEE MAP 25 3

1/4 COR.



Proposed Reservoir

Existing Seasonal "Creek"

Proposed Dam Height

Existing Seasonal Creek

Existing SFR

Existing Driveway

Hartley Rd.

RECEIVED

MAY 26 2010

WATER RESOURCES DEPT
SALEM, OREGON

RECEIVED

JUN 1 2010

WATER RESOURCES DEPT
SALEM, OREGON

A
N

I R S 1/4 TL
28 3W 05 A 3500
39065 SW Hartley Rd.
Gaston, OR 97119 R-87617

SCALE: 1" = 75'