

DRAWN BY:  
503/523-7106

DATE  
JUNE, 1993  
REVISED  
SEPTEMBER 14, 93  
REVISED  
JUNE, 1994  
NOV., 1994  
JAN., 1996

PROJECT NO.  
6092  
3194  
4495

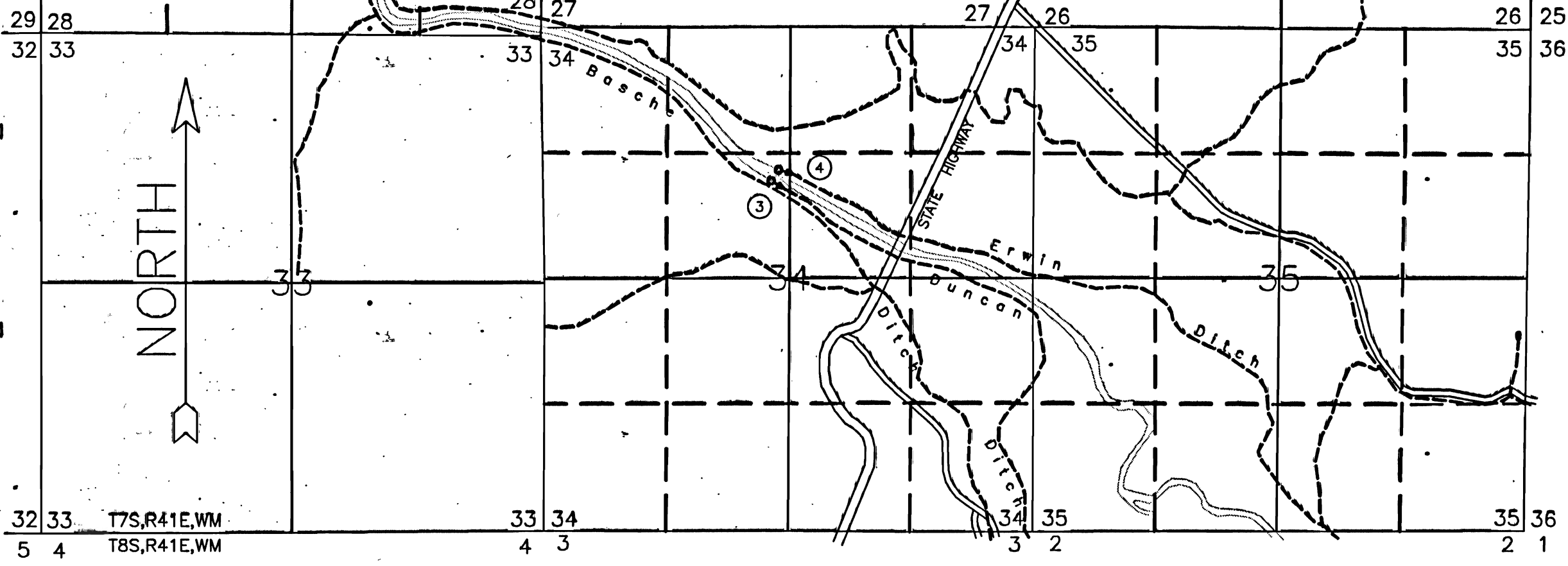
LEGEND

- BASCHE DITCH PRIMARY
- BASCHE DITCH SUPPLEMENTAL
- DUNCAN DITCH PRIMARY
- DUNCAN DITCH SUPPLEMENTAL
- PERKINS DITCH PRIMARY
- PERKINS DITCH SUPPLEMENTAL
- EMELE DITCH PRIMARY
- EMELE DITCH SUPPLEMENTAL
- ERWIN DITCH PRIMARY
- ERWIN DITCH SUPPLEMENTAL
- CRANSTON DITCH PRIMARY
- CRANSTON DITCH SUPPLEMENTAL
- TUCKER CREEK PRIM. W/ ERWIN DITCH SUPPL.
- CLOVER CREEK PRIM. W/ CRANSTON DITCH SUPPL.
- BALM CREEK PRIM. W/ CRANSTON DITCH SUPPL.
- DUNCAN DITCH PRIM. W/ BASCHE DITCH SUPPL.
- POWDER RIVER PRIM. w/o DITCH RIGHTS

- STREAMS
- DITCHES
- RIVER
- PROPERTY LINE
- 15.5 C3110 ACRES IRRIGATED & CERTIFICATE NO.
- MAJOR ROADS & HIGHWAYS
- DIRECTION OF FLOW
- SECTION LINE
- MID-SECTION LINE
- FORTY LINE
- 2.1 FLAG TO IRRIGATED AREA
- WLA WILDLIFE ATTRACTION
- DIVERSION POINT
- ② DIVERSION POINT DESIGNATION
- SWLA SUPPLEMENTAL WILDLIFE ATTRACTION
- 10.7\* STORED WATER APPLICATION ACRES

POINTS OF DIVERSION

- ① EMELE DITCH -- NE1/4 SE1/4 SECTION 20 T7S,R41E,WM 450' S. and 250' W. from the E. quarter corner of said section
- ② BASCHE DITCH -- NW1/4 SE1/4 SECTION 28 T7S,R41E,WM 1880' N. and 600' E. from the S. quarter corner of said section
- ③ DUNCAN DITCH -- SE1/4 NW1/4 SECTION 34 T7S,R41E,WM 1050' N. and 2420' E. from the W. quarter corner of said section
- ④ ERWIN DITCH -- SE1/4 NW1/4 SECTION 34 T7S,R41E,WM 3850' N. and 100' W. from the S. quarter corner of said section
- ⑤ CRANSTON DITCH -- SW1/4 NW1/4 SECTION 17 T8S,R42E,WM 880' E. of the W. quarter corner of said section
- ⑥ PERKINS DITCH -- NW1/4 SW1/4 SECTION 17 T8S,R42E,WM 50' S. and 800' E. from the W. quarter corner of said section
- ⑦ (old) CRANSTON DITCH -- (abandoned) SW1/4 NW1/4 SEC. 17 T8S,R42E, WM 800'E. and 150' N. from the W. quarter corner of said section
- ⑧ (old) PERKINS DITCH -- NE1/4 NE1/4 SECTION 18 T8S,R42E,WM 900' S. and 700' W. from the NE corner of said section
- ⑨ THIEF VALLEY RESERVOIR OUTLET -- NE1/4 SW1/4 SECTION 26 T6S,R40E,WM 2122' N. and 1893' E. from the SW corner of said section
- ⑩ RELIFT PUMP #1 -- SW1/4 SE1/4 SECTION 26 T8S,R42E,WM 880' N and 1450' W. from the SE corner of said section
- ⑪ RELIFT PUMP #2 -- SE1/4 SW1/4 SECTION 25 T8S,R42E,WM 860' N. and 1620' E. from the SW corner of said section
- ⑫ RELIFT PUMP #3 -- NW1/4 SW1/4 SECTION 22 T8S,R42E,WM 1480' N. and 90' E. from the SW corner of said section
- ⑬ (old) ERWIN DITCH (abandoned) NW1/4 NW1/4 SECTION 34 T7S,R41E,WM 200' S. and 400' E. from the NW corner of said section
- ⑭ BALM CREEK (Cranston Ditch) NW1/4 SW1/4 SECTION 25 T8S,R42E,WM 2980' S. and 10' E. from the NW corner of said section
- ⑮ TUCKER CREEK (Erwin Ditch) NE1/4 NE1/4 SECTION 17 T8S,R42E,WM 200' S. and 120' W. from the NE corner of said section
- ⑯ CLOVER CREEK (Cranston Ditch) NE1/4 NW1/4 SECTION 26 T8S,R42E,WM 320' S. and 2560' E. from the NW corner of said section



PROJECT:  
LOWER POWDER RIVER IRRIGATION DISTRICT  
House Bill 3111 Mapping  
Actual Water Usage Maps

SHEET TITLE:  
LEGEND  
POINTS OF DIVERSION

SHEET NO.  
1 OF 7