

36-4W-19 Tax Lots: 1400 & 1500

FOOTHILL BL



SESE

36 4W

1200' of 2" transport line

963' West

Rogue River

POD →

Little Savage Creek

365' North

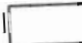


99

RECEIVED

JUN 24 2010

WATER RESOURCES DEPT
SALEM, OREGON

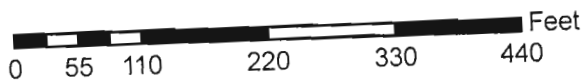
Legend

-  Tax Lots
-  Sections
-  Townships

Reference Corner



1 inch = 166 feet

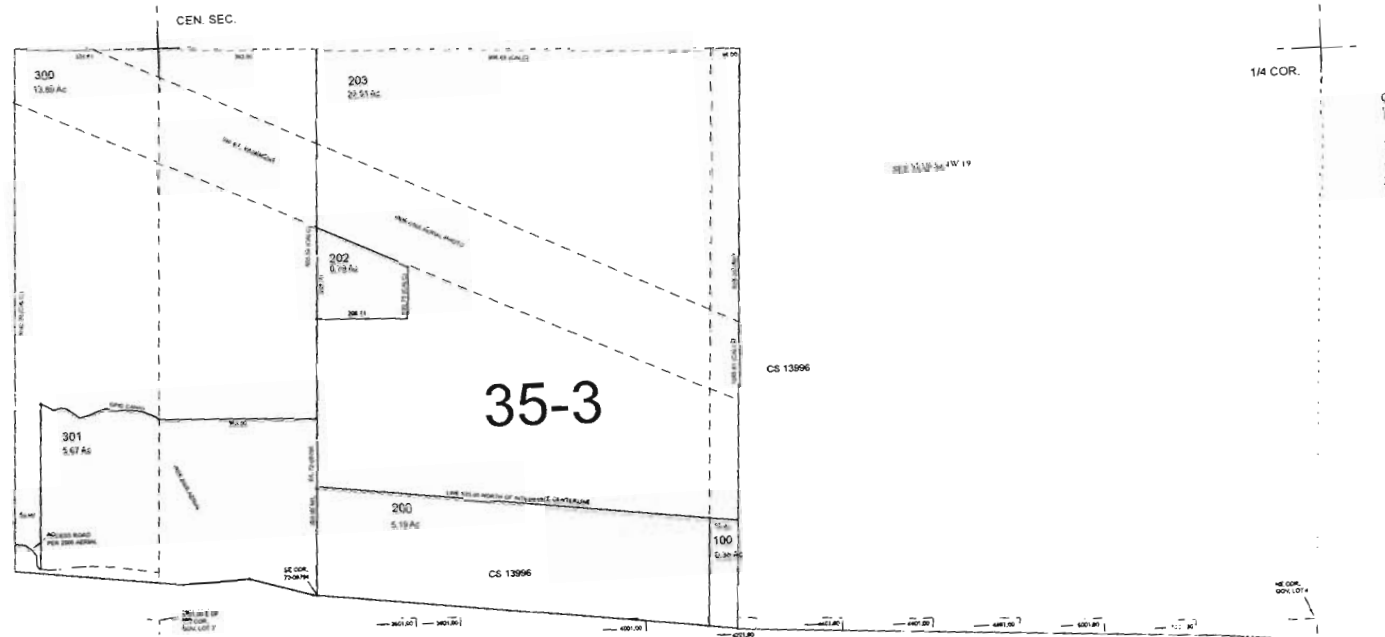


FOR ASSESSMENT AND TAXATION ONLY

S.E.1/4, SEC.19, T.36S., R.4W., W.M.
JACKSON COUNTY
1" = 200'

36 4W 19D

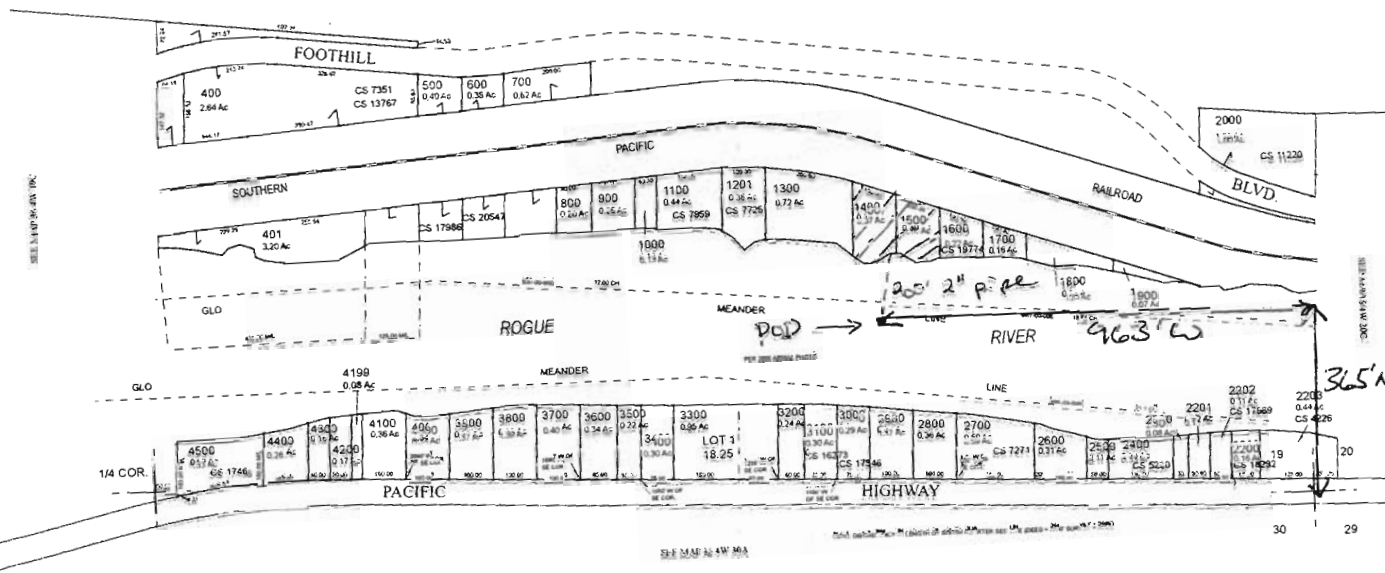
For more detail
see enclosed
scaled map



CANCELLED TAX
LOT NUMBERS
101
1200
1202
1701

S-07631

U.S. HWY. I-5



Reference
Lines

36.5'

RECEIVED
JUN 24 2010
WATER RESOURCES DEPT
SALEM, OREGON

36 4W 19D

NEW MAP AUGUST 05, 2004
REV. DECEMBER 04, 2005