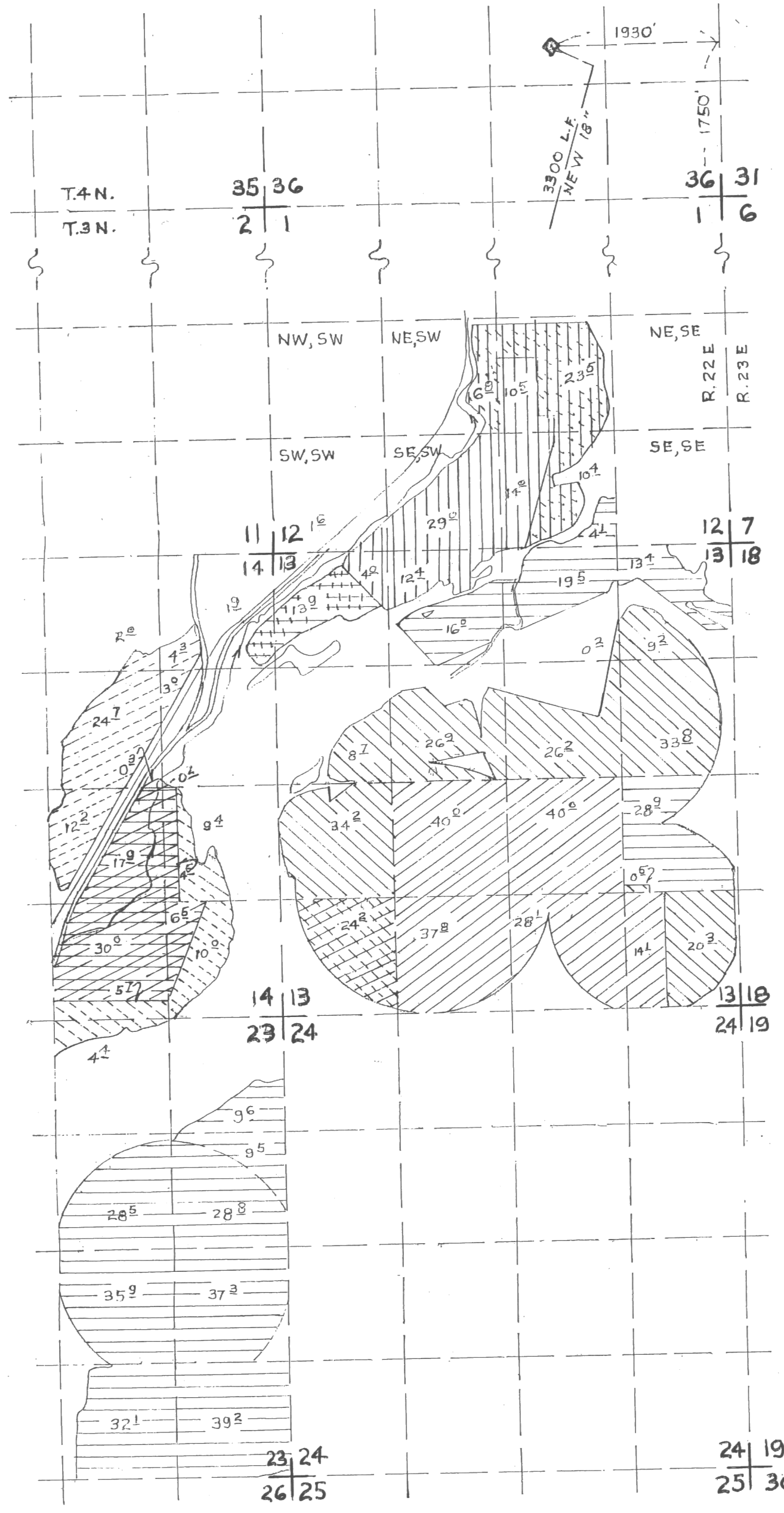


ADDITIONAL POINT OF DIVERSION

RECEIVED  
MAR 01 1995  
WATER RESOURCES DEPT.  
SALEM, OREGON



- 35002 DAVIS PRIMARY
- 35002 SULLIVAN PRIMARY
- 35002 DAVIS SUPPL.
- 35002 SCHRIMSHER SUPP.
- 35003 SULLIVAN PRIMARY
- 35004 SULLIVAN PRIMARY
- 35005 CRISP PRIMARY
- 35005 CRISP SUPPL.
- 35005 SULLIVAN SUPPL.
- 38225 CRISP

<b>K</b> KRUMBEIN ENGINEERING LTD. ENGINEERS - SURVEYORS - PLANNERS 361 S.E. Second Pendleton, Oregon	Scale 1"=1320'	Dwn. By DHK	Dwg. No. 9501B	Revision 1
	Date 2-23-95	Ckd. By	Job No. 91-4	Revision 2

FINAL PROOF MAP  
**BRIAN SULLIVAN**  
**T-6496**  
 SEC. 36, T. 4 N., R. 22 E. W.M.  
 SECS. 12, 13, 14, 23 T. 3 N., R. 23 E.

David H. Krumbein  
 No. 10, 1987  
 STATE OF OREGON  
**RENEWS 6/30/95**