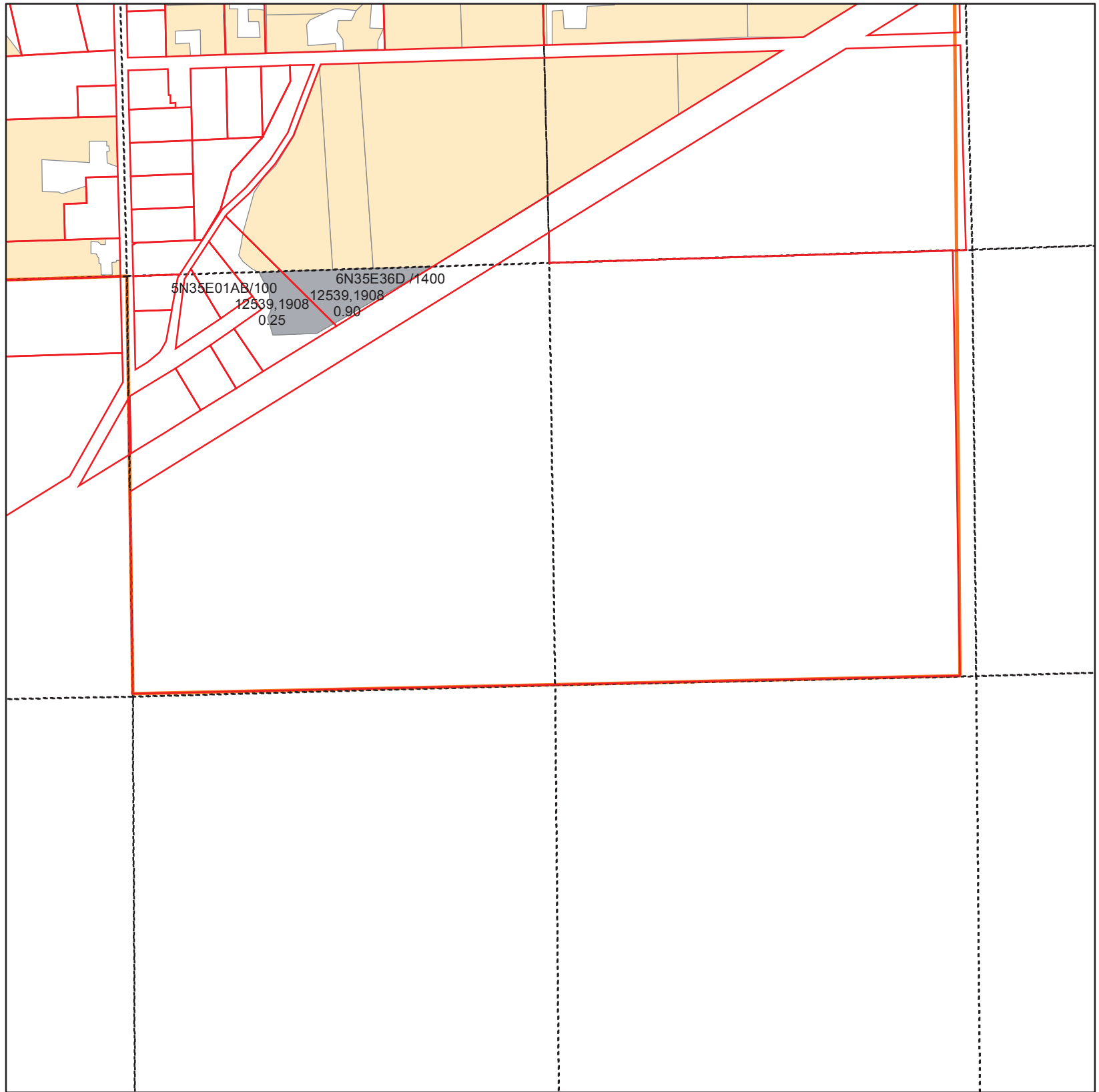


Walla Walla River Irrigation District

3201 Water Rights Map



T5N R35E WM Section 1 NE Quarter



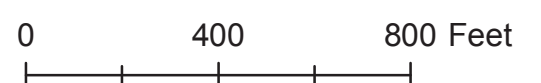
ASSESSORMAP	CERTIFICATE	PRIORITY	QQ	WR ACRES
5N35E01AB/100	12539	1908	NWNE	0.25
6N35E36D/1400	12539	1908	NWNE	0.90

CERT, PRIORITY

- 12539, 1908
- Water Rights Not Within Quarter

Legend

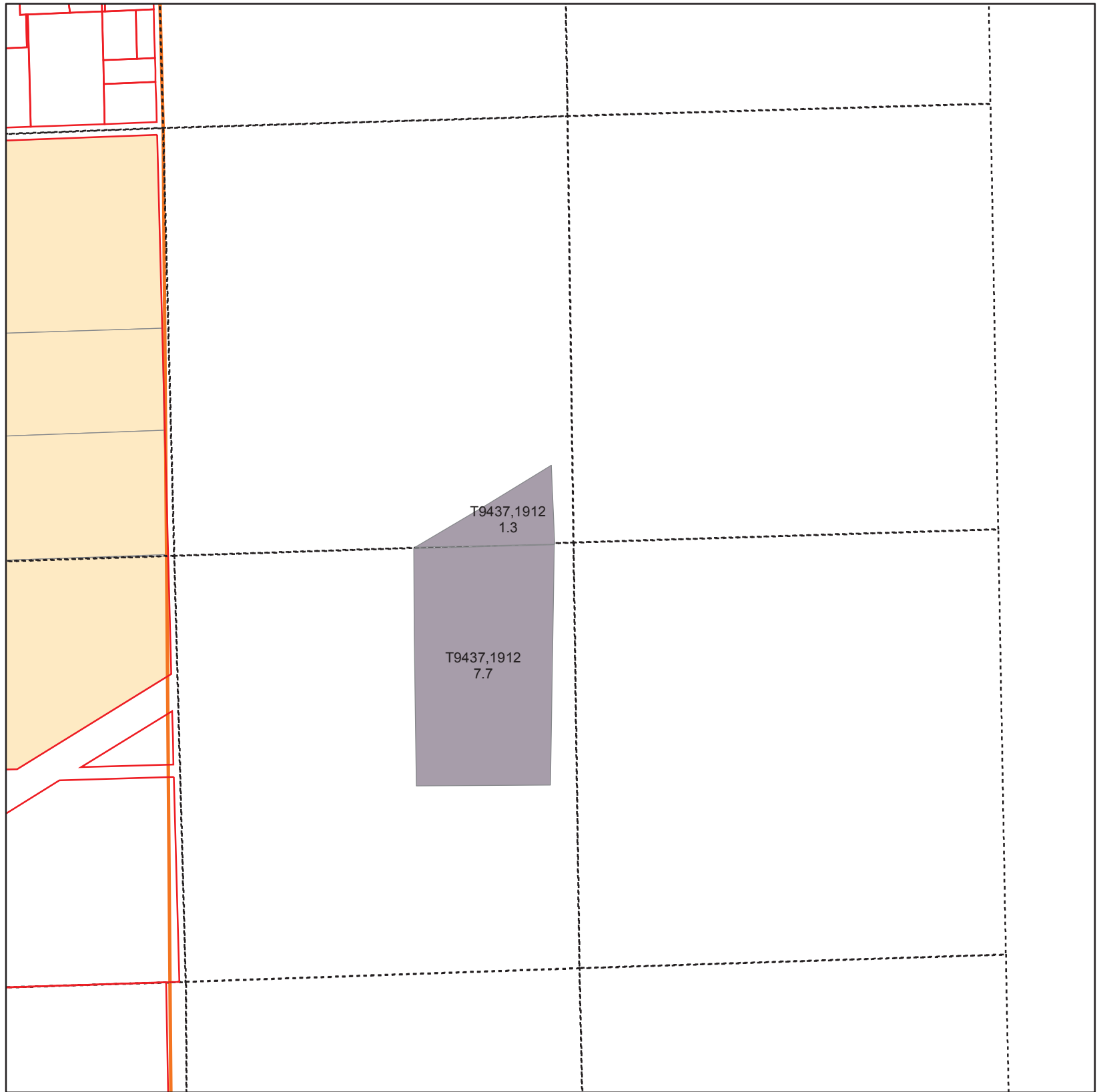
- PIPE
- Parcel
- QCDB
- WWRID Boundary



Date Nov 2007

Walla Walla River Irrigation District

3201 Water Rights Map



T6N R36E WM Section 31 SW Quarter



ASSESSORMAP	CERTIFICATE	PRIORITY	QQ	WR ACRES
6N36E31/1701	T9437	1912	SWSW	7.70
6N36E31/1701	T9437	1912	NWSW	1.30

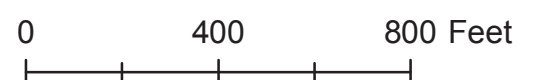
Primary Certificates

CERT, PRIORITY

- T9437, 1912
- Water Rights Not Within Quarter

Legend

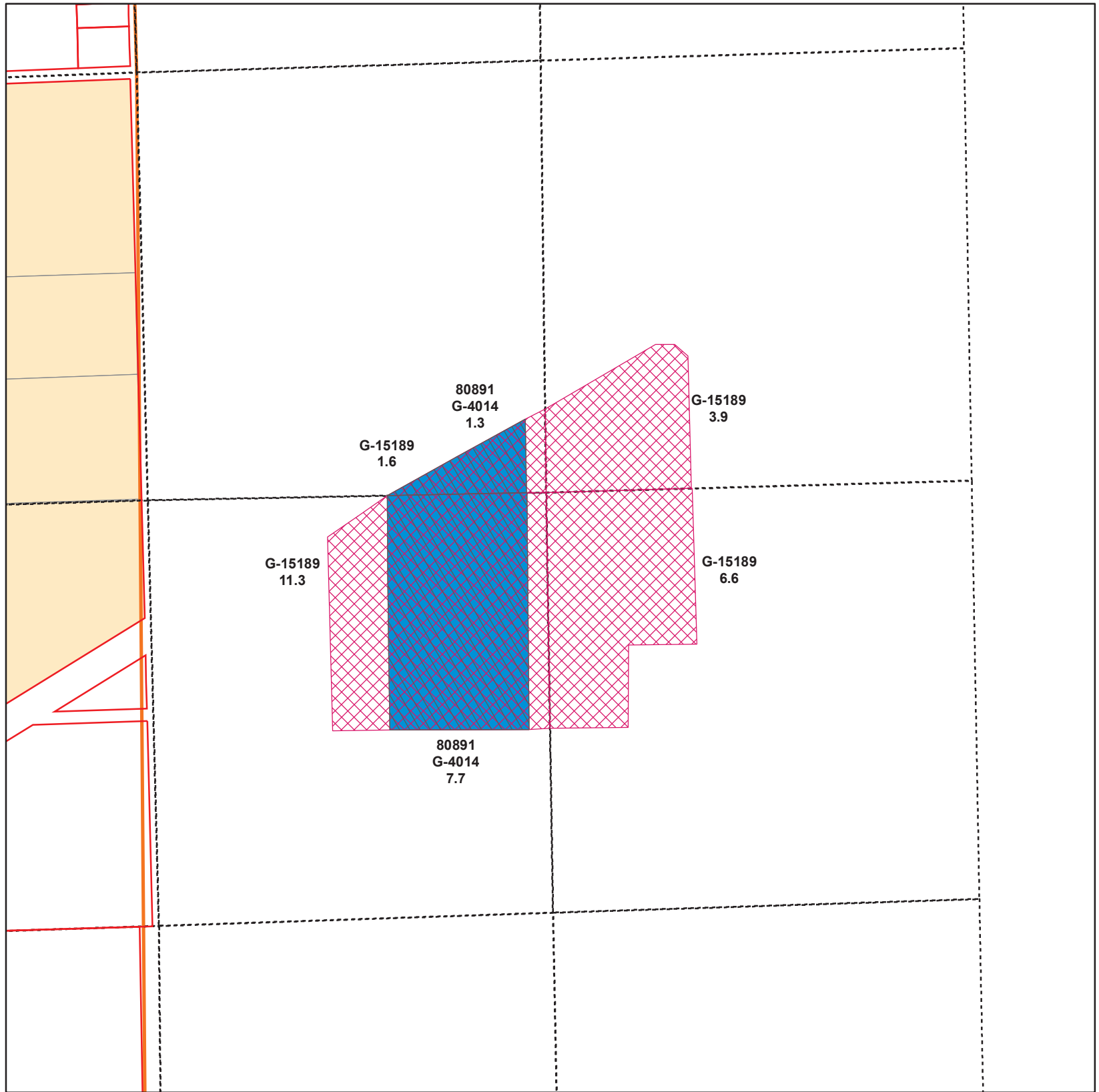
- PIPE
- Parcel
- QCDB
- WWRID Boundary



Date Nov 2007

Walla Walla River Irrigation District


3201 Water Rights Map



T6N R36E WM Section 31 SW Quarter



ASSESSORMA	PERMIT	CERT	PRIORITY	QQ	WR ACRES
6N36E31/1701	G-4014	80891	1968	SWSW	7.70
6N36E31/1701	G-4014	80891	1968	NWSW	1.30
6N36E31/1701	G-15189		2001	NWSW	1.60
6N36E31/1701	G-15189		2001	SWSW	11.30
6N36E31/1701	G-15189		2001	NESW	3.90
6N36E31/1701	G-15189		2001	SESW	6.60

 80891, G-4014

 G-15189

Primary Certificates

 Primary Certificates


 Water Rights Not Within Quarter

Supplemental Rights

Legend

 PIPE

 Parcel


 QCDB

 WWRID Boundary

Note:

Supplemental G-15189 quarter quarter amounts vary from the Primary it covers due to GPS/GIS mapping process. During the beneficial use mapping, the irrigated land under the pond to the southeast was removed.

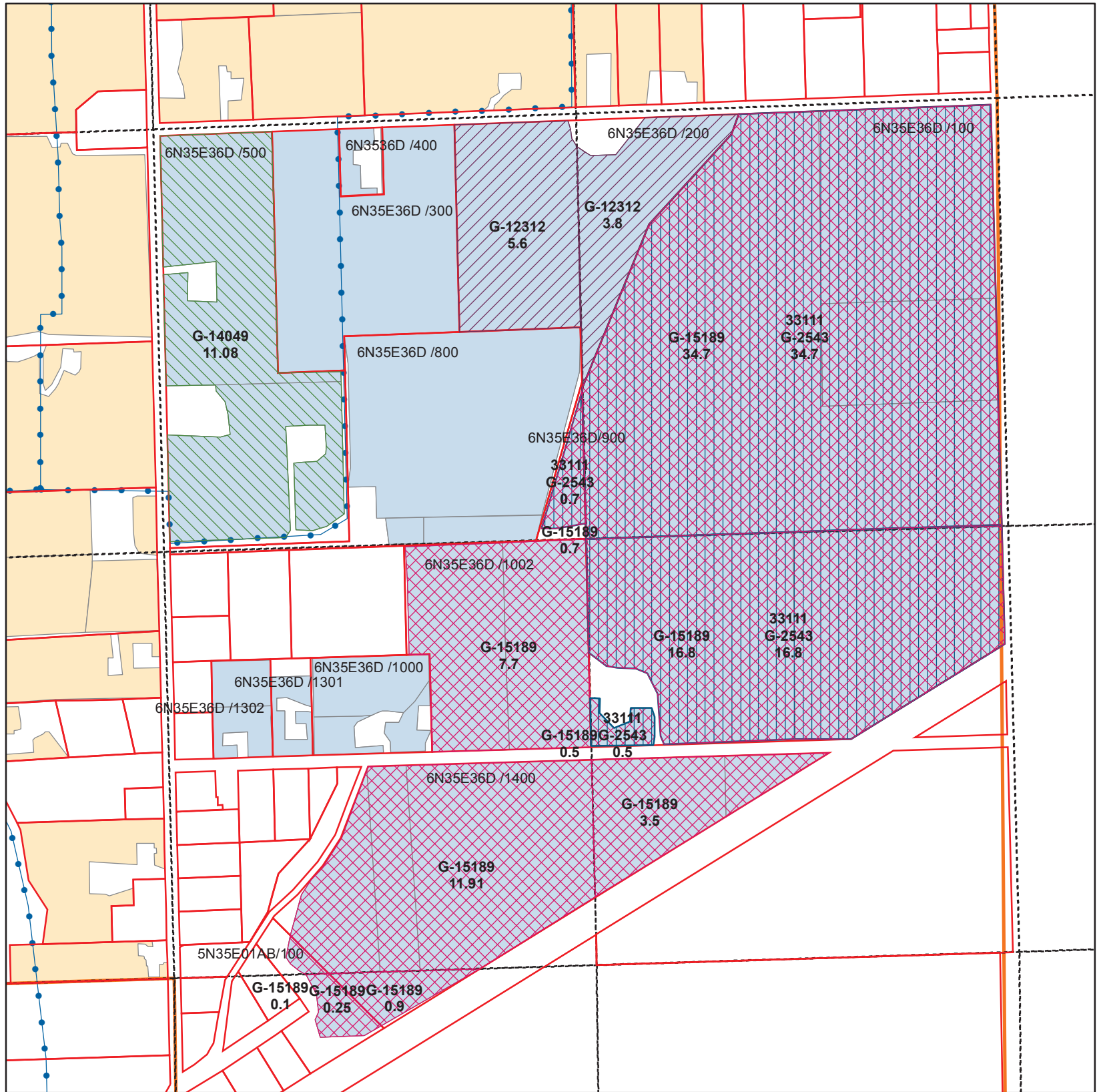
0 400 800 Feet



Date Dec 2007

Walla Walla River Irrigation District

3201 Water Rights Map



T6N R35E WM Section 36 SE Quarter
T5N R35E WM Section 1 NE Quarter





ASSESSORMAP	PERMIT	CERTIFICATE	PRIORITY	QQ	WR_ACRES
5N35E01AB/100	G-15189		2001	NWNE	0.25000
5N35E01AB/100	G-15189		2001	SWSE	0.10000
6N35E36D/100	G-15189		2001	NESE	34.70000
6N35E36D/100	G-15189		2001	SESE	17.30000
6N35E36D/100	G-2543	33111	1963	NESE	34.70000
6N35E36D/100	G-2543	33111	1963	SESE	17.30000
6N35E36D/1002	G-15189		2001	SWSE	7.70000
6N35E36D/1400	G-15189		2001	NWNE	0.90000
6N35E36D/1400	G-15189		2001	SESE	3.50000
6N35E36D/1400	G-15189		2001	SWSE	11.91000
6N35E36D/200	G-12312		1994	NWSE	5.60000
6N35E36D/200	G-12312		1994	NESE	3.80000
6N35E36D/500	G-14049		1999	NWSE	11.08000
6N35E36D/900	G-15189		2001	NWSE	0.70000
6N35E36D/900	G-2543	33111	1963	NWSE	0.70000

Supplemental

PERMIT





-  G-2543
-  G-12312
-  G-15189
-  G-14049

Primary Certificates

-  Primary Certificates
-  Water Rights Not Within Quarter

Supplemental Rights

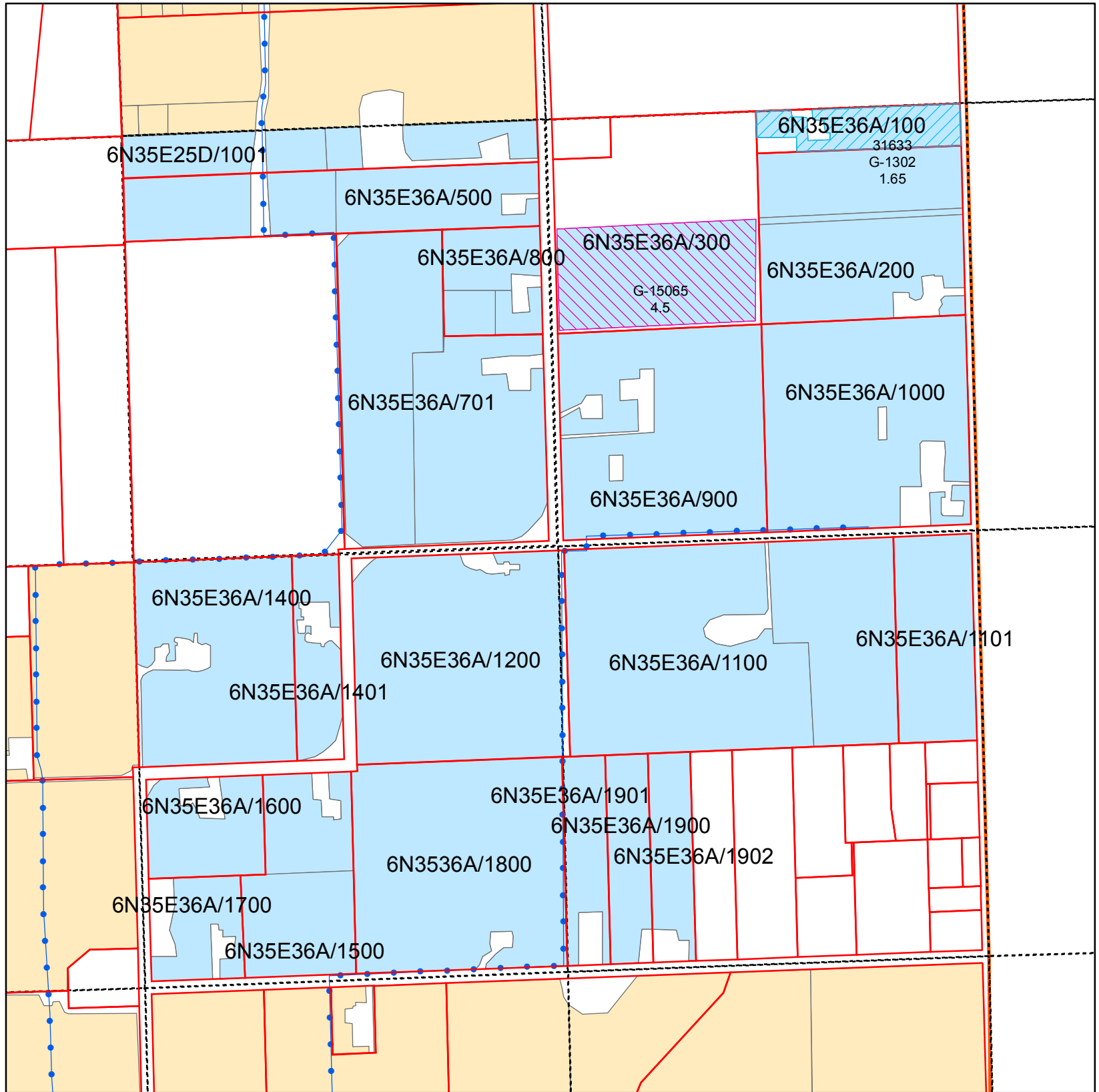
Legend

-  PIPE
-  Parcel
-  QCDB
-  WWRID Boundary

0 400 800 Feet

Walla Walla River Irrigation District

3201 Water Rights Map



T6N R35E WM Section 36 NE Quarter



ASSESSORMAP	PERMIT	CERTIFICATE	PRIORITY	QQ	WR_ACRES
6N35E36A/100	G-1302	31633	1959	NENE	1.65
6N35E36A/300	G-15065		2001	NENE	4.50

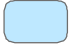

Supplemental Rights

Supplemental





PERMIT

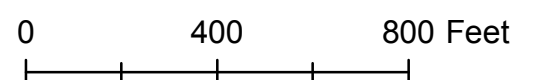
-  G-1302
-  G-15065

Primary Certificates

-  Primary Certificates
-  Water Rights Not Within Quarter

Legend

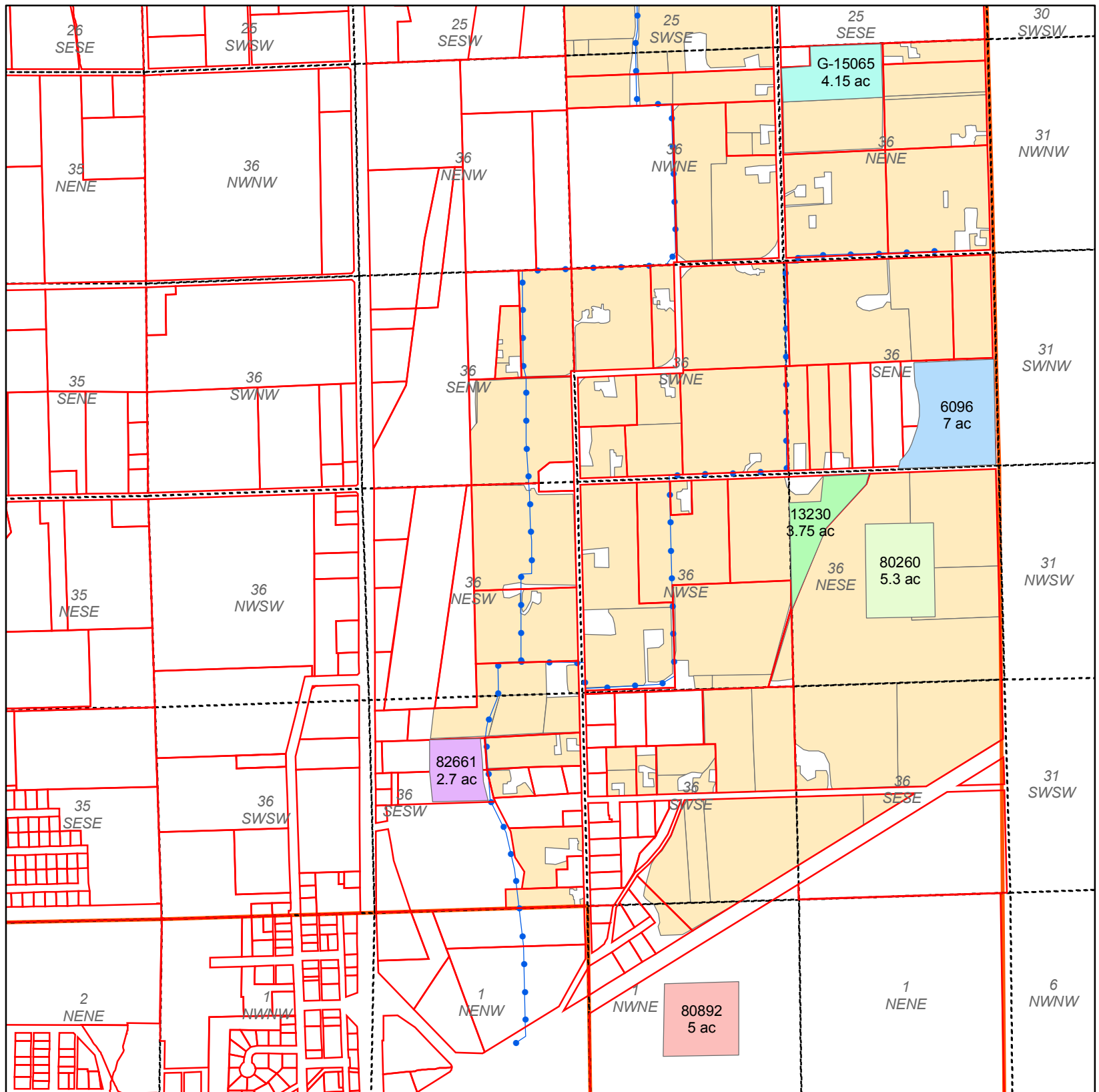
-  PIPE
-  Parcel
-  QCDB
-  WWRID Boundary



Date March 2008

Walla Walla River Irrigation District

3201 Water Rights Map



T6N R35E WM Section 36

T5N R35E WM Section 1 NE Quarter



NON-DISTRICT WATER RIGHTS

CERTIFICATE	PRIORITY	P_S	QQ	WR_ACRES
6096	1924	PRI	SENE	7.00
13230	1907	PRI	NESE	3.75
80260	1934	PRI	NESE	5.30
82661	1924	PRI	SESW	2.70
80892	1912	PRI	NWNE	5.00
G-15065	2001	PRI	NENE	4.15

NON DISTRICT CERTIFICATE

- 13230
- 6096
- 80260
- 80892
- 82661
- G-15065

Primary Certificates

- District Certificates

This map shows non-district Certificates within WWRID boundaries that are not served by the District. The polygons are placed within the quarter-quarter sections but may not be the real place of use. The District is not responsible for the delivery of these rights and there for does not have knowledge of place of use.

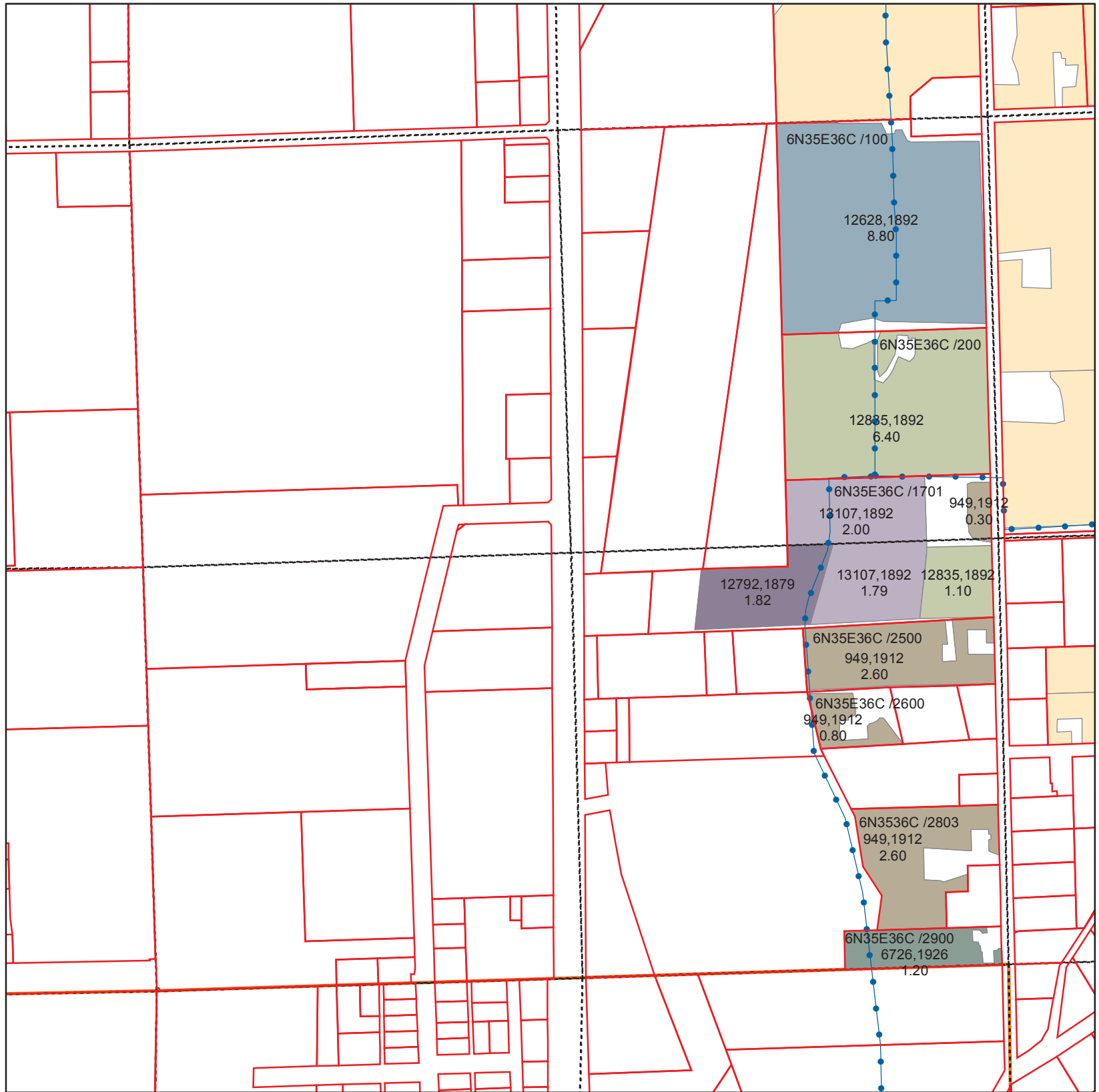
Legend

- PIPE
- Parcel
- QCDB
- WWRID Boundary

0 400 800 Feet

Walla Walla River Irrigation District

3201 Water Rights Map



T6N R35E WM Section 36 SW Quarter



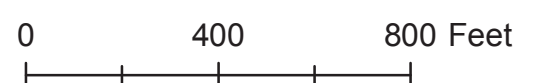
ASSESSORMAP	CERTIFICATE	PRIORITY	QQ	WR ACRES
6N35E36C/100	12628	1892	NESW	8.80
6N35E36C/1701	12792	1879	SESW	1.82
6N35E36C/1701	12835	1892	SESW	1.10
6N35E36C/1701	13107	1892	NESW	2.00
6N35E36C/1701	13107	1892	SESW	1.79
6N35E36C/1701	949	1912	NESW	0.30
6N35E36C/200	12835	1892	NESW	6.40
6N35E36C/2500	949	1912	SESW	2.60
6N35E36C/2600	949	1912	SESW	0.80
6N35E36C/2803	949	1912	SESW	2.60
6N35E36C/2900	6726	1926	SESW	1.20

Primary Certificates CERT, PRIORITY

- 12628, 1892
- 12792, 1879
- 12835, 1892
- 13107, 1892
- 6726, 1926
- 949, 1912
- Water Rights Not Within Quarter

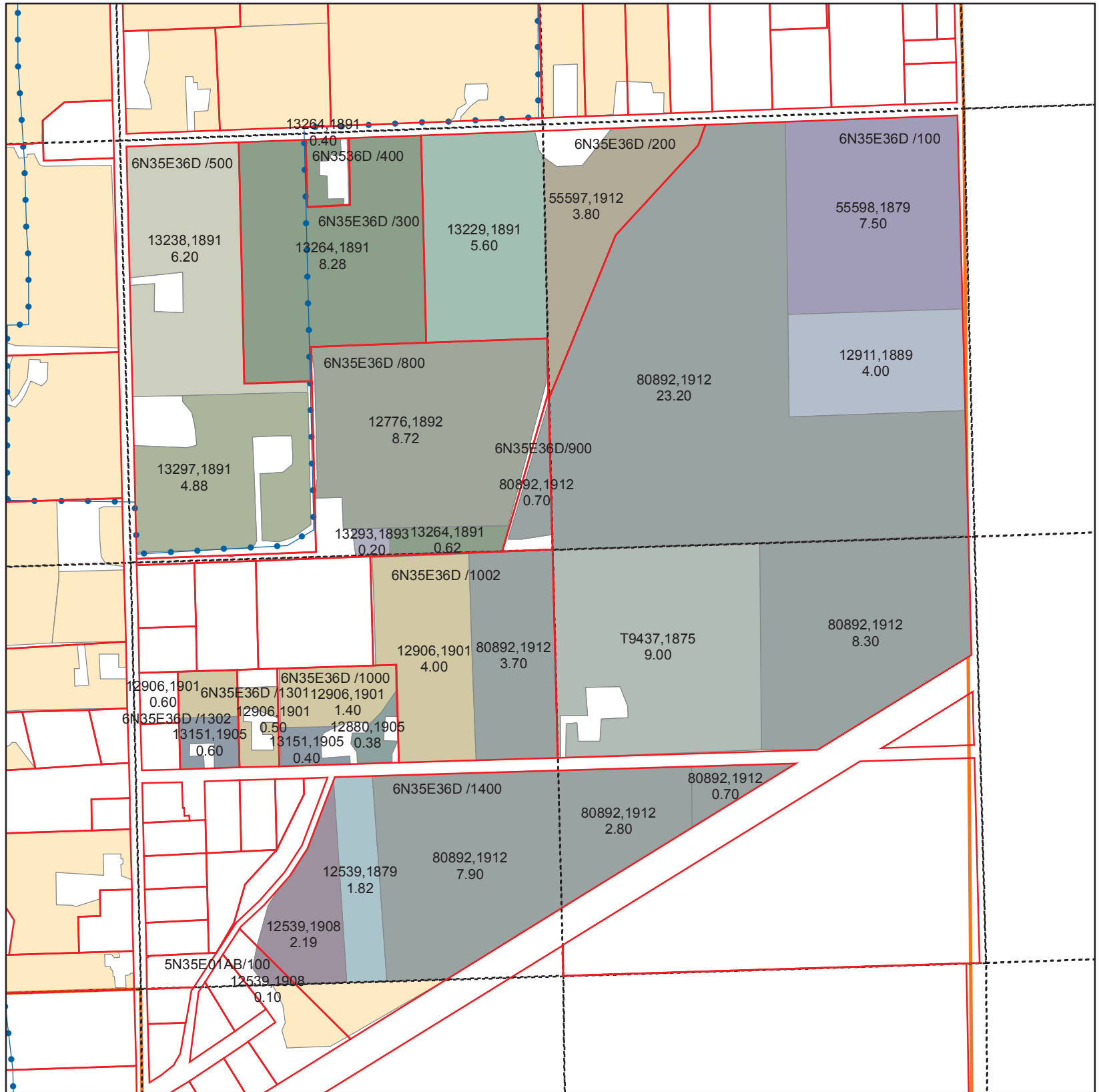
Legend

- PIPE
- Parcel
- QCDB
- WWRID Boundary



Walla Walla River Irrigation District

3201 Water Rights Map



T6N R35E WM Section 36 SE Quarter

Primary Certificates

CERT, PRIORITY

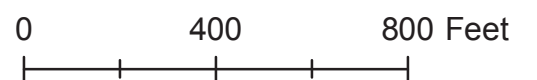
- 12539, 1879
- 12539, 1908
- 12776, 1892
- 12880, 1905
- 12906, 1901
- 12911, 1889
- 13151, 1905
- 13229, 1891
- 13238, 1891
- 13264, 1891
- 13293, 1893
- 13297, 1891
- 55597, 1912
- 55598, 1879
- 80892, 1912
- T9437, 1875
- Water Rights Not Within Quarter

ASSESSORMAP	CERTIFICATE	PRIORITY	QQ	WR ACRES
5N35E01AB/100	12539	1908	SWSE	0.10
6N35E36A/400	13264	1891	NWSE	0.40
6N35E36A/800	12776	1892	NWSE	8.72
6N35E36A/800	13264	1891	NWSE	0.62
6N35E36A/800	13293	1893	NWSE	0.20
6N35E36D/100	12911	1889	NESE	4.00
6N35E36D/100	55598	1879	NESE	7.50
6N35E36D/100	80892	1912	NESE	23.20
6N35E36D/100	80892	1912	SESE	8.30
6N35E36D/100	T9437	1875	SESE	9.00
6N35E36D/1000	12880	1905	SWSE	0.38
6N35E36D/1000	12906	1901	SWSE	1.40
6N35E36D/1000	13151	1905	SWSE	0.40
6N35E36D/1002	12906	1901	SWSE	4.00
6N35E36D/1002	80892	1912	SWSE	3.70
6N35E36D/1301	12906	1901	SWSE	0.50
6N35E36D/1302	12906	1901	SWSE	0.60
6N35E36D/1302	13151	1905	SWSE	0.60
6N35E36D/1400	12539	1879	SWSE	1.82
6N35E36D/1400	12539	1908	SWSE	2.19
6N35E36D/1400	80892	1912	SESE	0.70
6N35E36D/1400	80892	1912	SWSE	7.90
6N35E36D/1400	80892	1912	SESE	2.80
6N35E36D/200	13229	1891	NWSE	5.60
6N35E36D/200	55597	1912	NESE	3.80
6N35E36D/300	13264	1891	NWSE	8.28
6N35E36D/500	13238	1891	NWSE	6.20
6N35E36D/500	13297	1891	NWSE	4.88
6N35E36D/900	80892	1912	NWSE	0.70



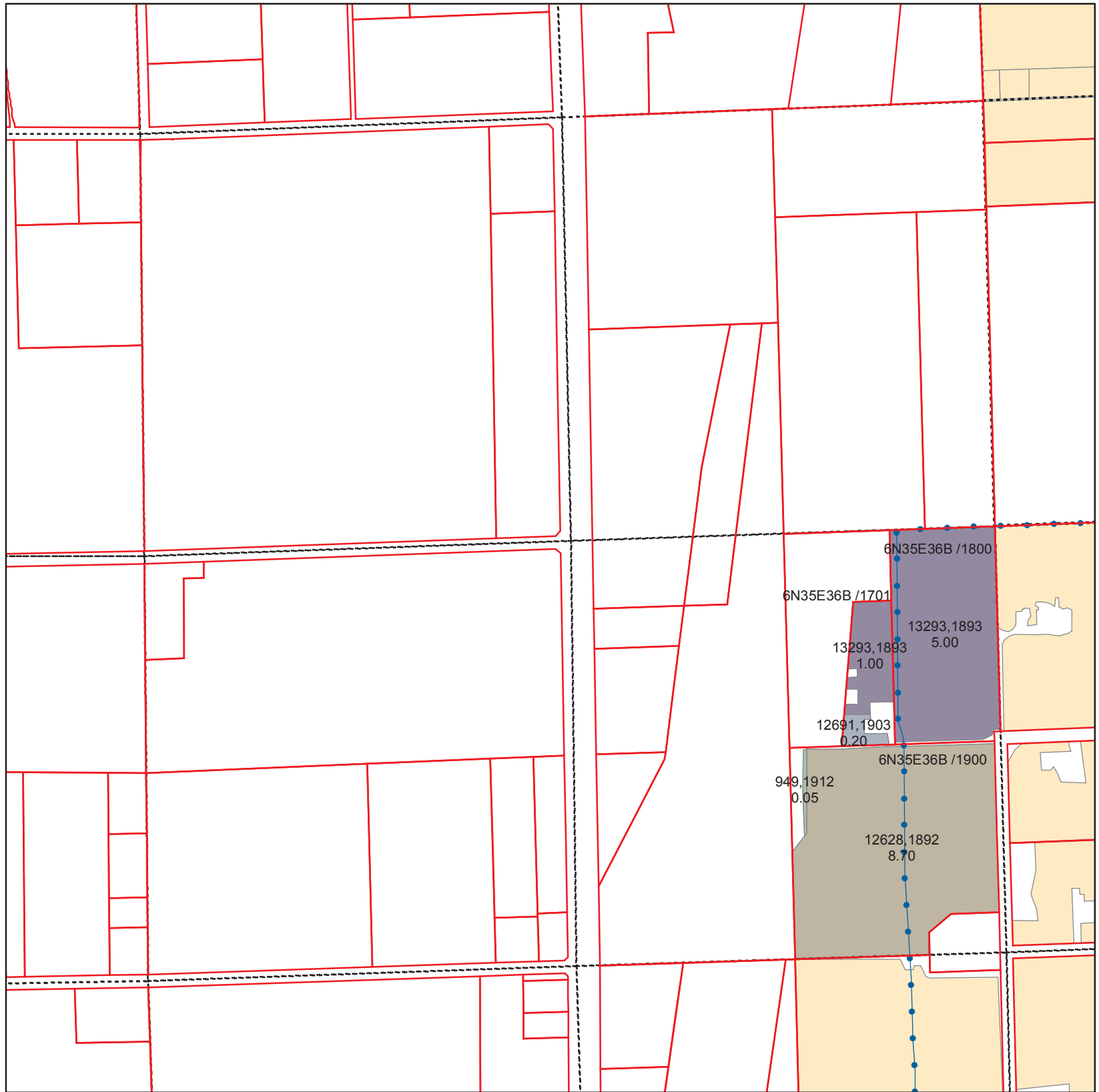
Legend

- PIPE
- Parcel
- QCDB
- WWRID Boundary



Walla Walla River Irrigation District

3201 Water Rights Map



T6N R35E WM Section 36 NW Quarter



ASSESSORMAP	CERTIFICATE	PRIORITY	QQ	WR_ACRES
6N35E36B/1701	12691	1903	SEnw	0.20
6N35E36B/1701	13293	1893	SEnw	1.00
6N35E36B/1800	13293	1893	SEnw	5.00
6N35E36B/1900	12628	1892	SEnw	8.70
6N35E36B/1900	949	1912	SEnw	0.05

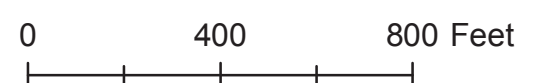
Primary Certificates

CERT, PRIORITY

- 12628, 1892
- 12691, 1903
- 13293, 1893
- 949, 1912
- Water Rights Not Within Quarter

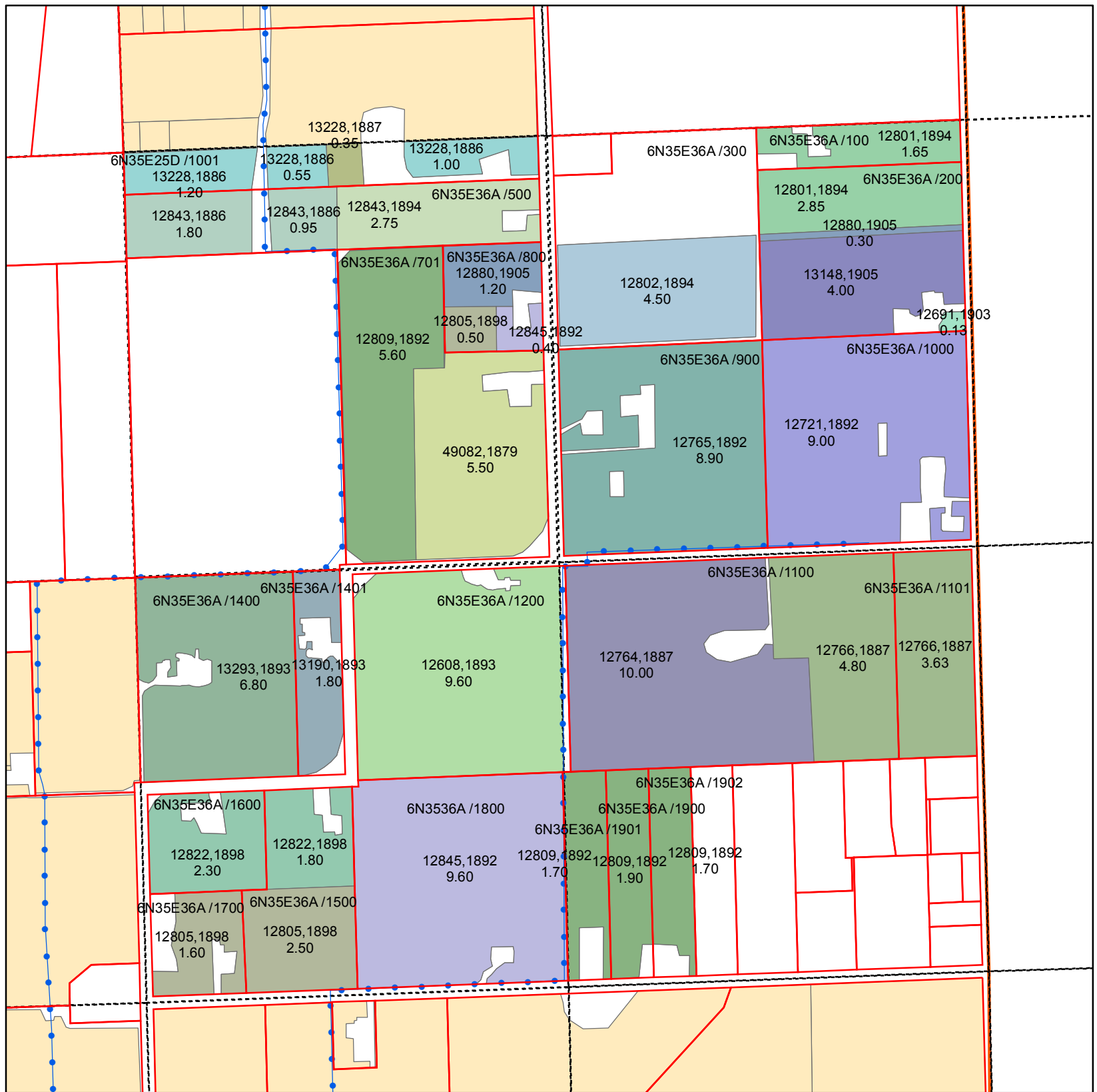
Legend

- PIPE
- Parcel
- QCDB
- WWRID Boundary



Walla Walla River Irrigation District

3201 Water Rights Map



T6N R35E WM Section 36 NE Quarter

Primary Certificates CERTIFICATE, PRIORITY

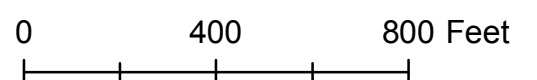
- 12608, 1893
- 12691, 1903
- 12721, 1892
- 12764, 1887
- 12765, 1892
- 12766, 1887
- 12801, 1894
- 12802, 1894
- 12805, 1898
- 12809, 1892
- 12822, 1898
- 12843, 1886
- 12843, 1894
- 12845, 1892
- 12880, 1905
- 13148, 1905
- 13190, 1893
- 13228, 1886
- 13228, 1887
- 13293, 1893
- 49082, 1879
- Water Rights Not Within Quarter

ASSESSORMAP	CERTIFICATE	PRIORITY	QQ	WR ACRES
6N35E25D/1001	13228	1886	NWNE	1.20
6N35E25D/1001	13228	1886	NWNE	1.00
6N35E25D/1001	13228	1886	NWNE	0.55
6N35E25D/1001	13228	1887	NWNE	0.35
6N35E36A/100	12801	1894	NENE	1.65
6N35E36A/1000	12721	1892	NENE	9.00
6N35E36A/1100	12764	1887	SENE	10.00
6N35E36A/1100	12766	1887	SENE	4.80
6N35E36A/1101	12766	1887	SENE	3.63
6N35E36A/1200	12608	1893	SWNE	9.60
6N35E36A/1400	13293	1893	SWNE	6.80
6N35E36A/1401	13190	1893	SWNE	1.80
6N35E36A/1500	12805	1898	SWNE	2.50
6N35E36A/1500	12822	1898	SWNE	1.80
6N35E36A/1600	12822	1898	SWNE	2.30
6N35E36A/1700	12805	1898	SWNE	1.60
6N35E36A/1800	12845	1892	SWNE	9.60
6N35E36A/1900	12809	1892	SENE	1.90
6N35E36A/1901	12809	1892	SENE	1.70
6N35E36A/1902	12809	1892	SENE	1.70
6N35E36A/200	12691	1903	NENE	0.13
6N35E36A/200	12801	1894	NENE	2.85
6N35E36A/200	12880	1905	NENE	0.30
6N35E36A/200	13148	1905	NENE	4.00
6N35E36A/300	12802	1894	NENE	4.50
6N35E36A/500	12843	1886	NWNE	1.80
6N35E36A/500	12843	1886	NWNE	0.95
6N35E36A/500	12843	1894	NWNE	2.75
6N35E36A/701	12809	1892	NWNE	5.60
6N35E36A/701	49082	1879	NWNE	5.50
6N35E36A/800	12805	1898	NWNE	0.50
6N35E36A/800	12845	1892	NWNE	0.40
6N35E36A/800	12880	1905	NWNE	1.20
6N35E36A/900	12765	1892	NENE	8.90



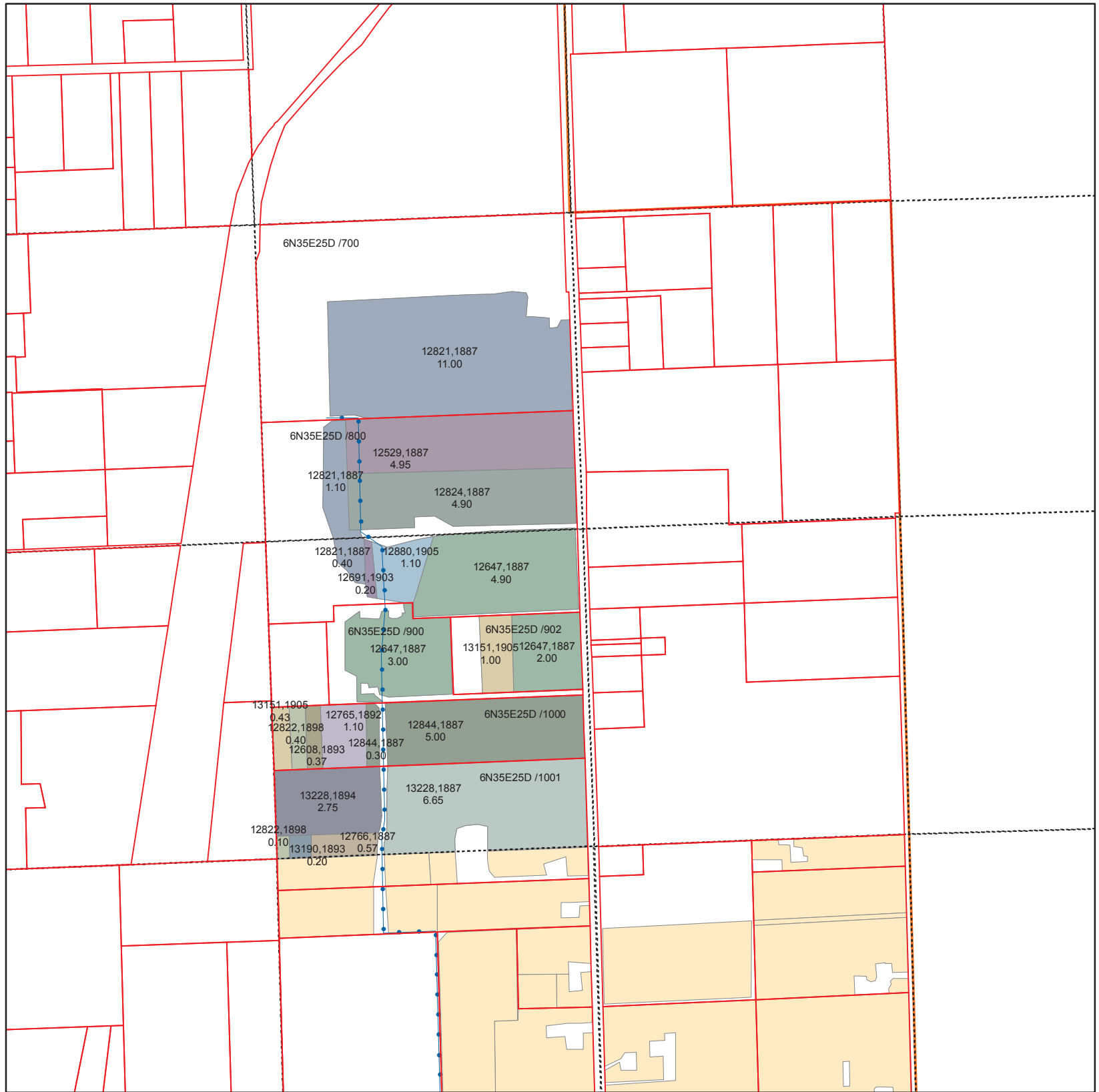
Legend

- PIPE
- Parcel
- QCDB
- WWRID Boundary



Walla Walla River Irrigation District

3201 Water Rights Map



Primary Certificate

CERT, PRIORITY

- 12529, 1887
- 12608, 1893
- 12647, 1887
- 12691, 1903
- 12765, 1892
- 12766, 1887
- 12821, 1887
- 12822, 1898
- 12824, 1887
- 12844, 1887
- 12880, 1905
- 13151, 1905
- 13190, 1893
- 13228, 1887
- 13228, 1894
- Water Rights Not Within Quarter

T6N R35E WM Section 25 SE Quarter

ASSESSORMAP	CERTIFICATE	PRIORITY	QQ	WR ACRES
6N35E25D/1000	12608	1893	SWSE	0.37
6N35E25D/1000	12765	1892	SWSE	1.10
6N35E25D/1000	12822	1898	SWSE	0.40
6N35E25D/1000	12844	1887	SWSE	0.30
6N35E25D/1000	12844	1887	SWSE	5.00
6N35E25D/1000	13151	1905	SWSE	0.43
6N35E25D/1001	12766	1887	SWSE	0.57
6N35E25D/1001	12822	1898	SWSE	0.10
6N35E25D/1001	13190	1893	SWSE	0.20
6N35E25D/1001	13228	1887	SWSE	6.65
6N35E25D/1001	13228	1894	SWSE	2.75
6N35E25D/700	12821	1887	NWSE	11.00
6N35E25D/800	12529	1887	NWSE	4.95
6N35E25D/800	12647	1887	SWSE	4.90
6N35E25D/800	12691	1903	SWSE	0.20
6N35E25D/800	12821	1887	NWSE	1.10
6N35E25D/800	12821	1887	SWSE	0.40
6N35E25D/800	12824	1887	NWSE	4.90
6N35E25D/800	12880	1905	SWSE	1.10
6N35E25D/900	12647	1887	SWSE	3.00
6N35E25D/902	12647	1887	SWSE	2.00
6N35E25D/902	13151	1905	SWSE	1.00



Legend

- PIPE
- Parcel
- QCDB
- WWRID Boundary

