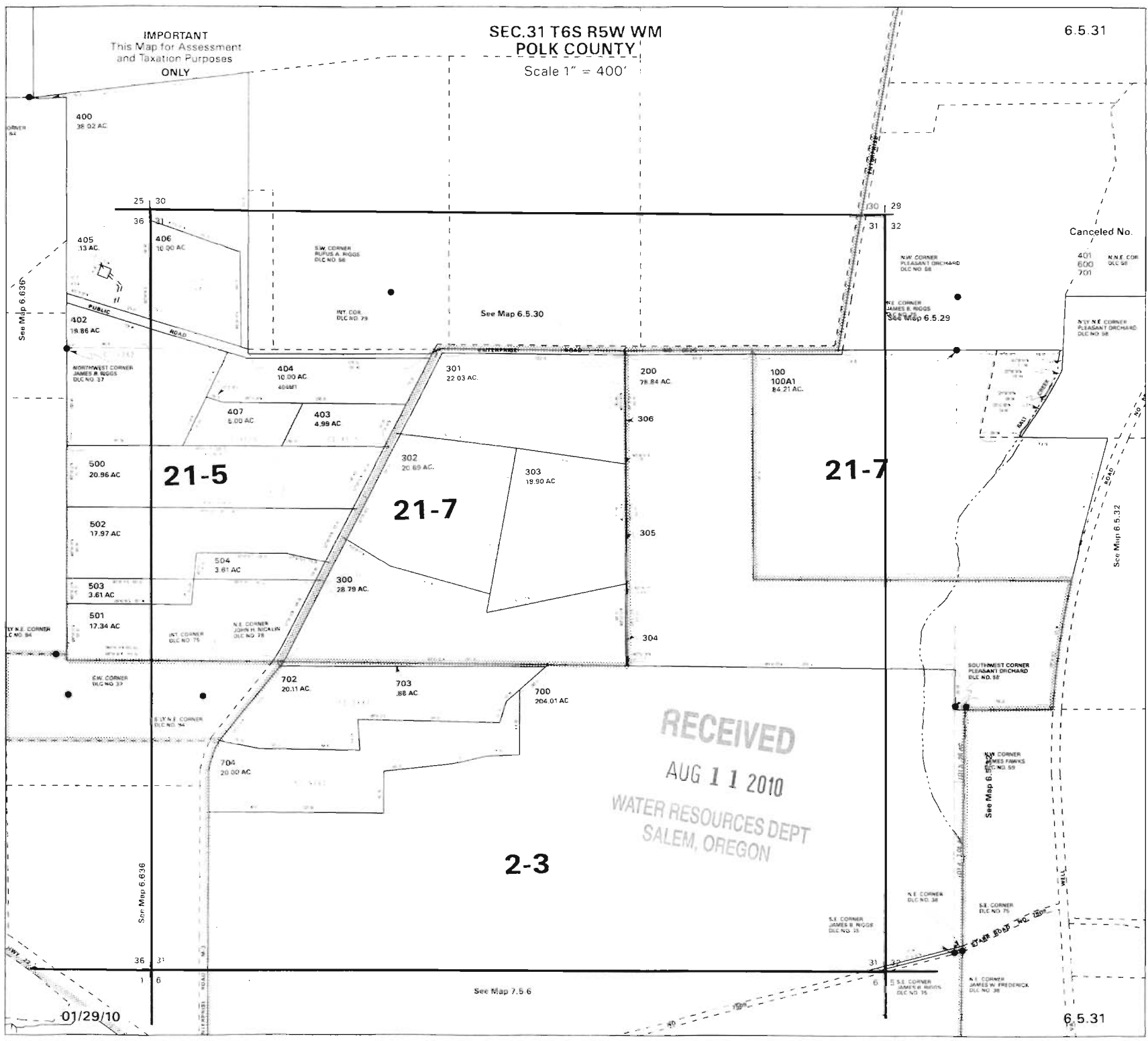


IMPORTANT
This Map for Assessment
and Taxation Purposes
ONLY

SEC.31 T6S R5W WM
POLK COUNTY

Scale 1" = 400'

6.5.31



Canceled No.

See Map 6.636

See Map 6.5.30

See Map 6.5.29

See Map 6.5.32

See Map 6.636

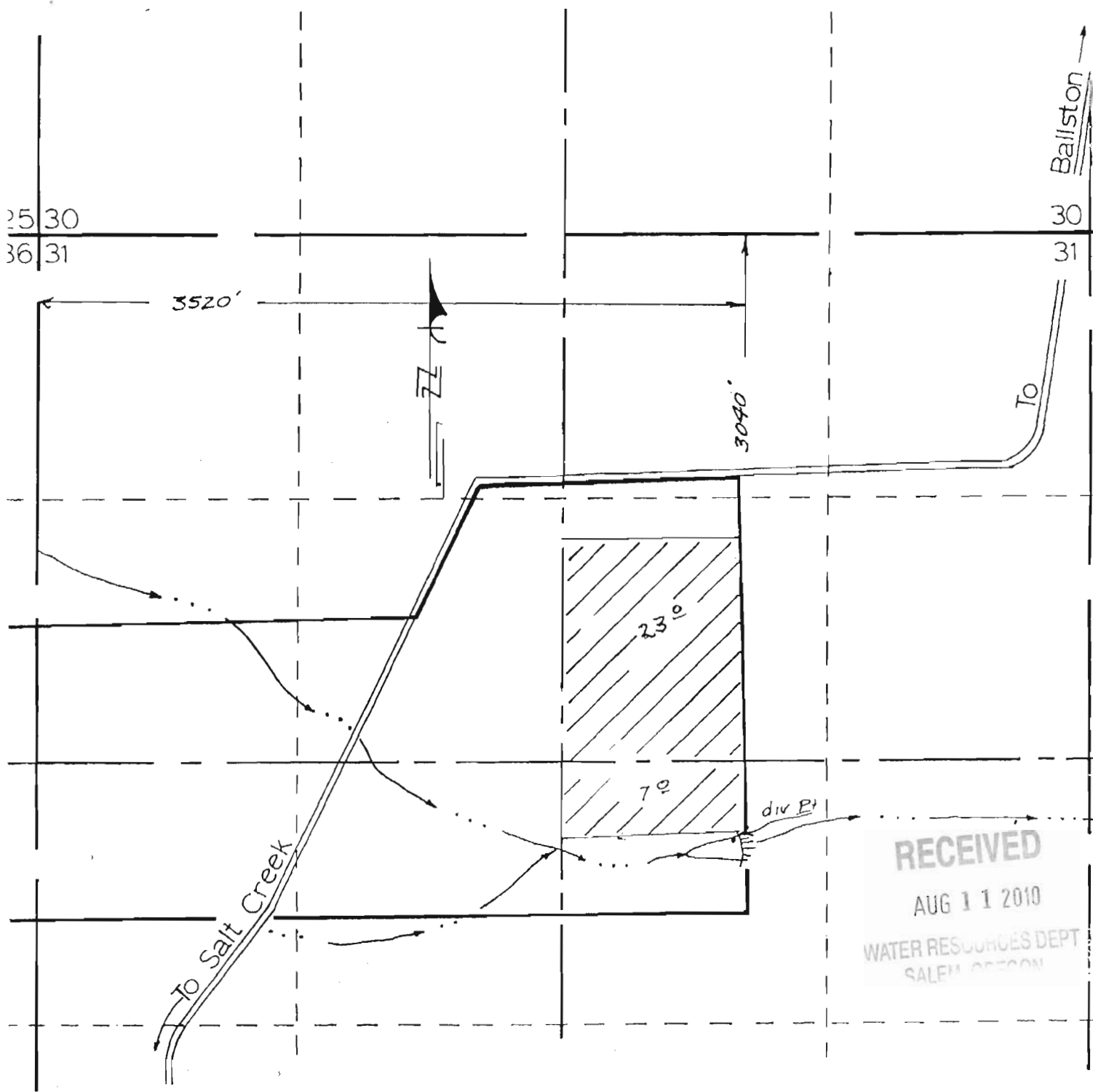
See Map 6.5.32

See Map 7.5.6

RECEIVED
AUG 11 2010
WATER RESOURCES DEPT
SALEM, OREGON

01/29/10

6.5.31



RECEIVED
 AUG 11 2010
 WATER RESOURCES DEPT.
 SALEM, OREGON

RECEIVED
 JUL 18 1977
 WATER RESOURCES DEPT.
 SALEM, OREGON

GORDON BUHLER
 Section 31 T6S R5W W.M.

Scale: 1" = 660'

Area to be Irrigated - // // // //

Application No. 56236
 Permit No. 41560