

RECEIVED

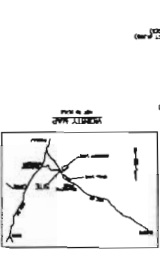
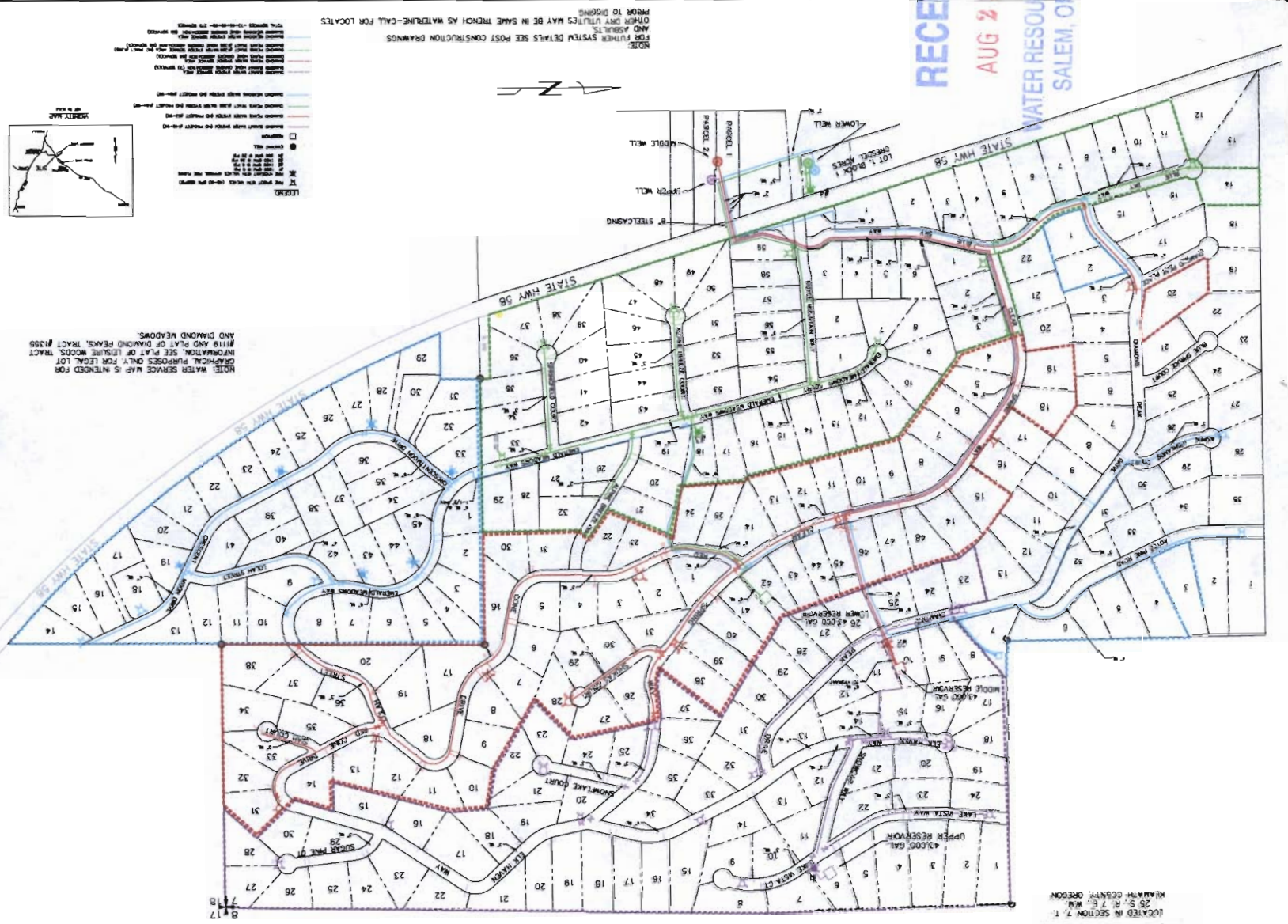
AUG 23 2010

WATER RESOURCES DEPT
SALEM, OREGON

AMERICAN CASH EQUITIES
1470 NE 1ST ST, STE 100
BEND, OREGON 97701

DIAMOND SUMMIT, DIAMOND PEAKS,
AND DIAMOND LEADOWS TRACT #1355,
AND DIAMOND MEADOWS TRACT #1359,
WATER SERVICE MAP

TYE ENGINEERING, INC.
7281 NW HILL - BEND, OREGON 97701 - (541) 338-8888



NOTE: WATER SERVICE MAP IS INTENDED FOR GRAPHICAL PURPOSES ONLY FOR LEGAL LOT INFORMATION. SEE PLAN OF LEADERS WOODS TRACT #1119 AND PLAN OF DIAMOND PEAKS TRACT #1359 AND DIAMOND MEADOWS.

NOTE:
FOR FURTHER SYSTEM DETAILS SEE POST CONSTRUCTION DRAWINGS AND ASSEMBLY
OTHER DRY UTILITIES MAY BE IN SAME TRENCH AS WATERLINE-CALL FOR LOCATES PRIOR TO DIGGING

DIAMOND SUMMIT, DIAMOND PEAKS,
AND DIAMOND LEADOWS TRACT #1355,
AND DIAMOND MEADOWS TRACT #1359,
WATER SERVICE MAP

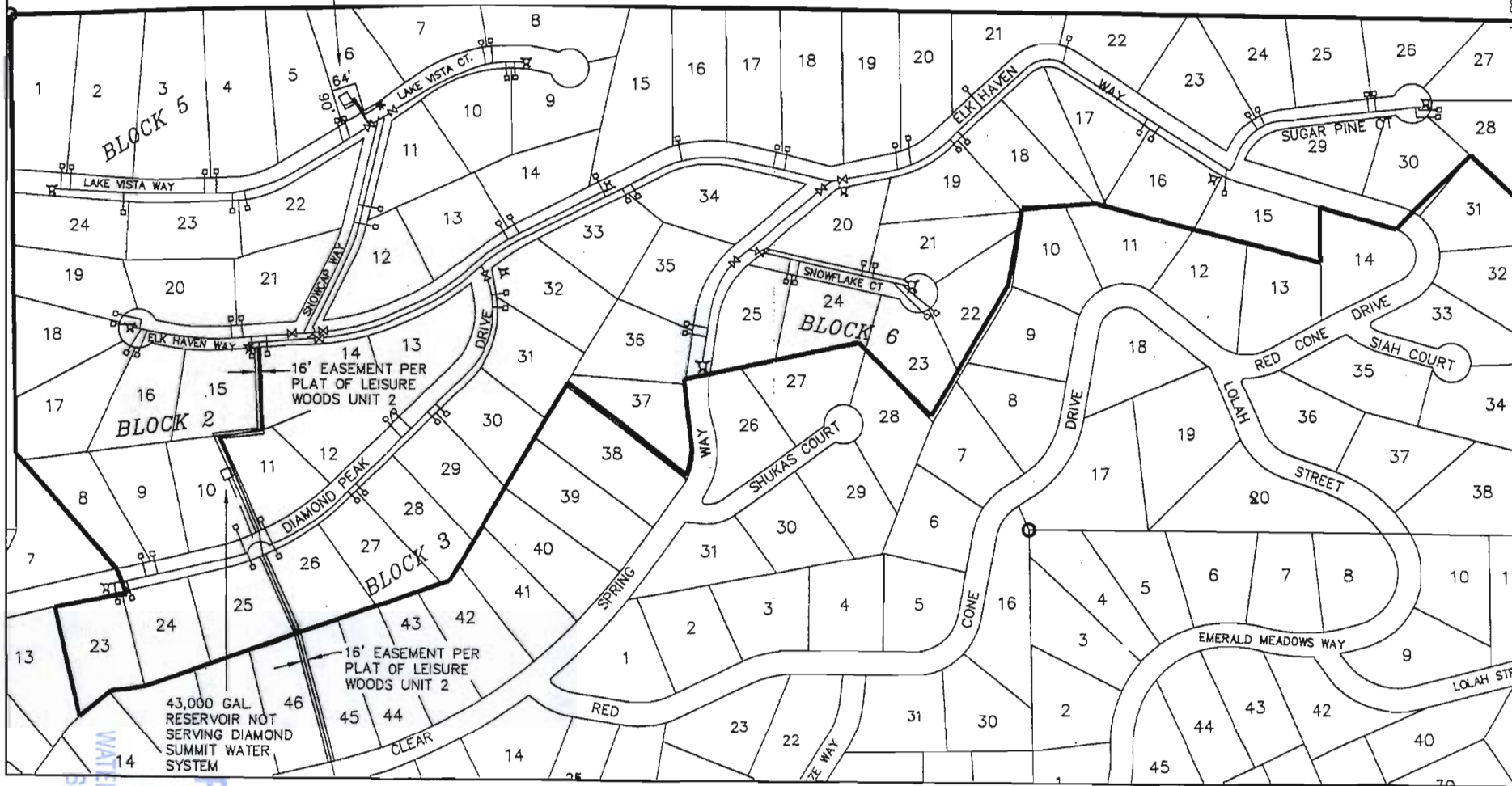
LOCATED IN SECTION 7, T.
25 S., R. 7 E., W. 10
WASHTAH COUNTY, OREGON

17-13-10

43,000 GAL. RESERVOIR SERVING
DIAMOND SUMMIT WATER SYSTEM,
EASEMENT RECORDED IN VOL. M03
PG. 92439, LOCATION IS APPROX.
NOT SURVEYED

DRAFT

SCALE: 1"=300'



SH-15

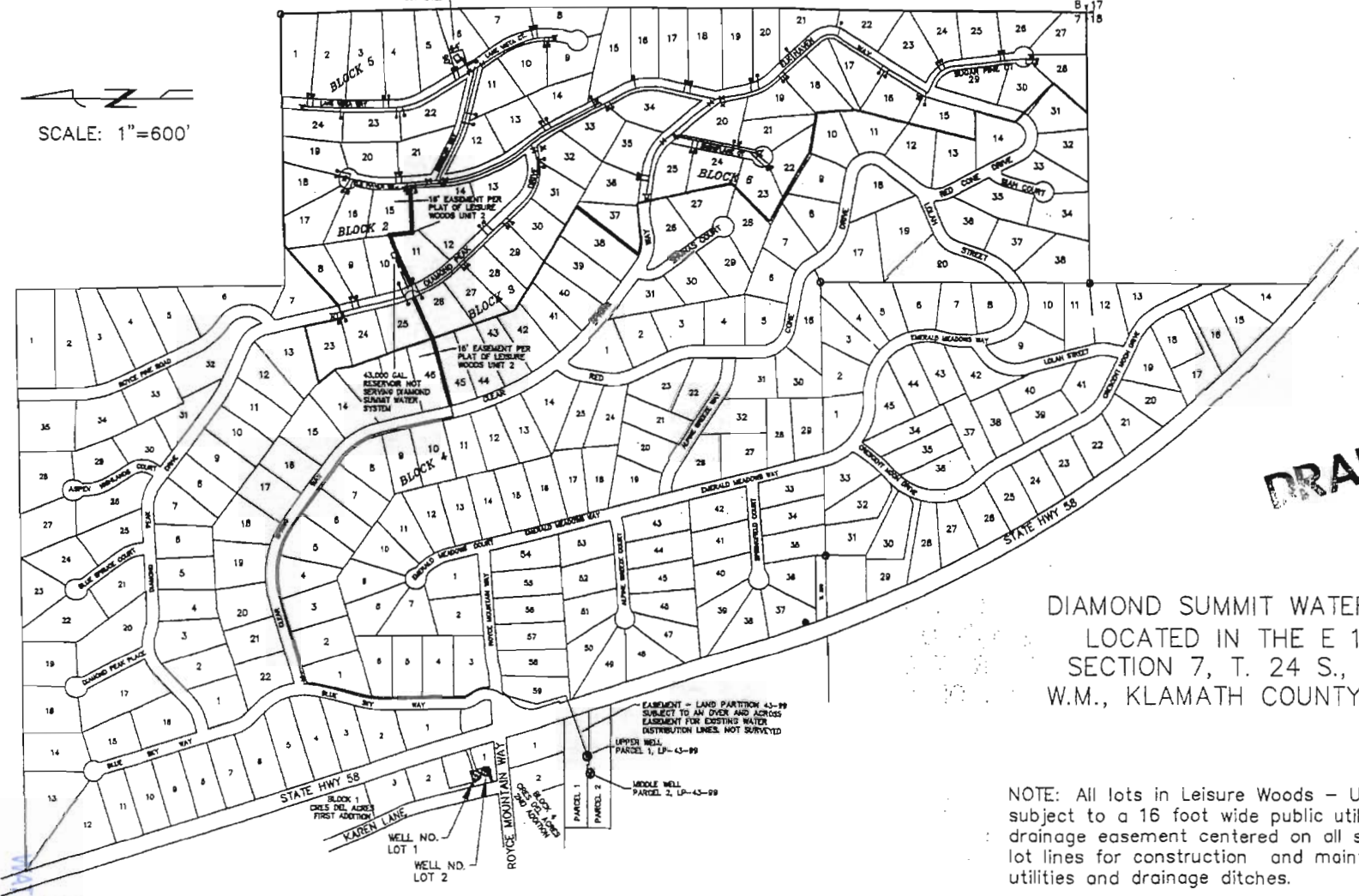
RECEIVED
AUG 23 2010
WATER RESOURCES DEPT
SALEM, OREGON

G-17415



SCALE: 1"=600'

WATER RESOURCES DEPT. FILE NO. 24-43-99
NO. 24-43-99 LOCATION IS APPROX.
NOT SURVEYED



DRAFT

DIAMOND SUMMIT WATER SYSTEM
LOCATED IN THE E 1/2 OF
SECTION 7, T. 24 S., R. 7 E.,
W.M., KLAMATH COUNTY, OREGON

NOTE: All lots in Leisure Woods - Unit 2 are
subject to a 16 foot wide public utility and
drainage easement centered on all side and rear
lot lines for construction and maintenance of
utilities and drainage ditches.

RECEIVED
AUG 23 2010
WATER RESOURCES DEPT
SALEM, OREGON

LAND PARTITION 43-99

SITUATED IN THE SW 1/4 OF SECTION 7,
T24S, R7EWM, KLAMATH COUNTY, OREGON
SURVEYED: MAY, 2000

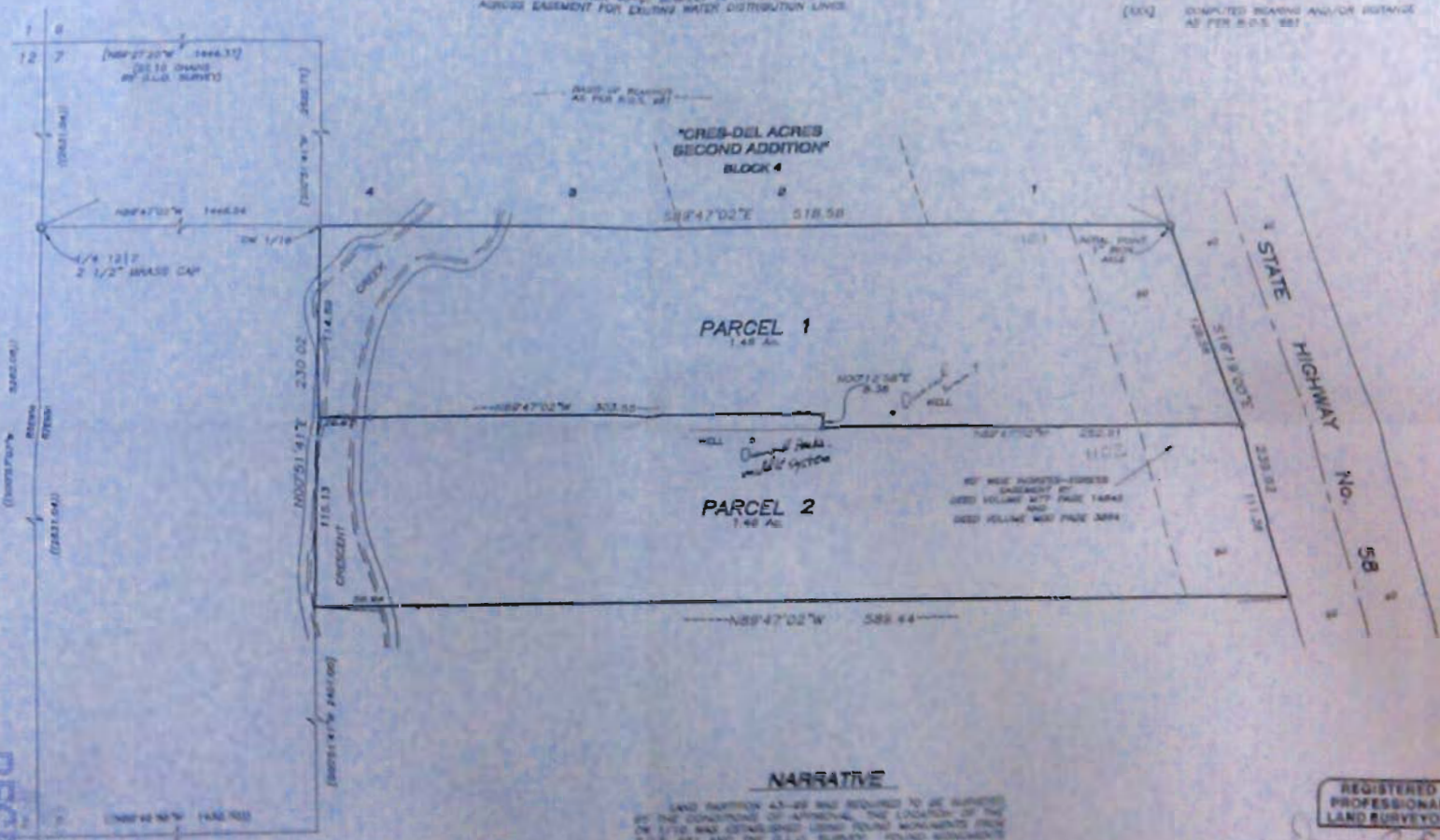


LEGEND

- FOUND MONUMENT AS SHOWN
- SET 3/8" x 3/8" IRON PIN WITH TRU-LINE SURVEYING, INC. PLASTIC CAP
- (XXXX) RECORD BEARING AND/OR DISTANCE AS PER R.O.S. 881
- (XXX) COMPUTED BEARING AND/OR DISTANCE AS PER R.O.S. 881

EASEMENT

LAND PARTITION 43-99 SUBJECT TO AN OVER AND ACROSS EASEMENT FOR DRAINING WATER DISTRIBUTION LINES.



NARRATIVE

LAND PARTITION 43-99 WAS REQUIRED TO BE SURVEYED BY THE COMMISSIONER OF APPEALS. THE LOCATION OF THE 20' WIDE RIGHT-OF-WAY EASEMENT BY DEED VOLUME 874 PAGE 1848 AND DEED VOLUME 887 PAGE 3884 WAS ESTABLISHED USING FOUND MONUMENTS FROM R.O.S. 881 AND THE S.L.G. SURVEY. FOUND MONUMENTS FROM R.O.S. 881 WERE ALSO USED FOR CONTROL TO SET THE MONUMENTS AS SHOWN.

REGISTERED PROFESSIONAL LAND SURVEYOR

DAVID J. EVAN
JULY 15, 1991
DEED # 12345
2442

TRU-LINE SURVEYING, INC.
2333 SUMMERS LANE
KLAMATH FALLS, OREGON 97603
SHEET 2 OF 2

EASEMENT OF RECORD
SEE LOCATED FOR STUDY
DEED VOLUME 874 PAGE 1848
IN FAVOR OF ASSOCIATE ELECTRIC
COOPERATIVE, INC.
FOR TRANSMISSION LINE

RECEIVED
AUG 23 2010
WATER RESOURCES DEPT.
SALEM, OREGON

DAVID J. EVAN
REGISTERED PROFESSIONAL LAND SURVEYOR

I HEREBY CERTIFY THAT THIS IS A TRUE AND EXACT COPY OF THE ORIGINAL PLAT OF LAND PARTITION 43-99 AS FILED WITH THE CLERK OF CLATSOP COUNTY, OREGON.
Linda Smith
Katherine Jordan or Katherine Jordan
CLERK OF CLATSOP COUNTY

D-17415

RIVER FRONT LOTS
CRS DES. INC.