

This map was prepared for assessment purposes

NE1/4 SEC 35 T5N R28E WM UMATILLA COUNTY SCALE 1"=200'

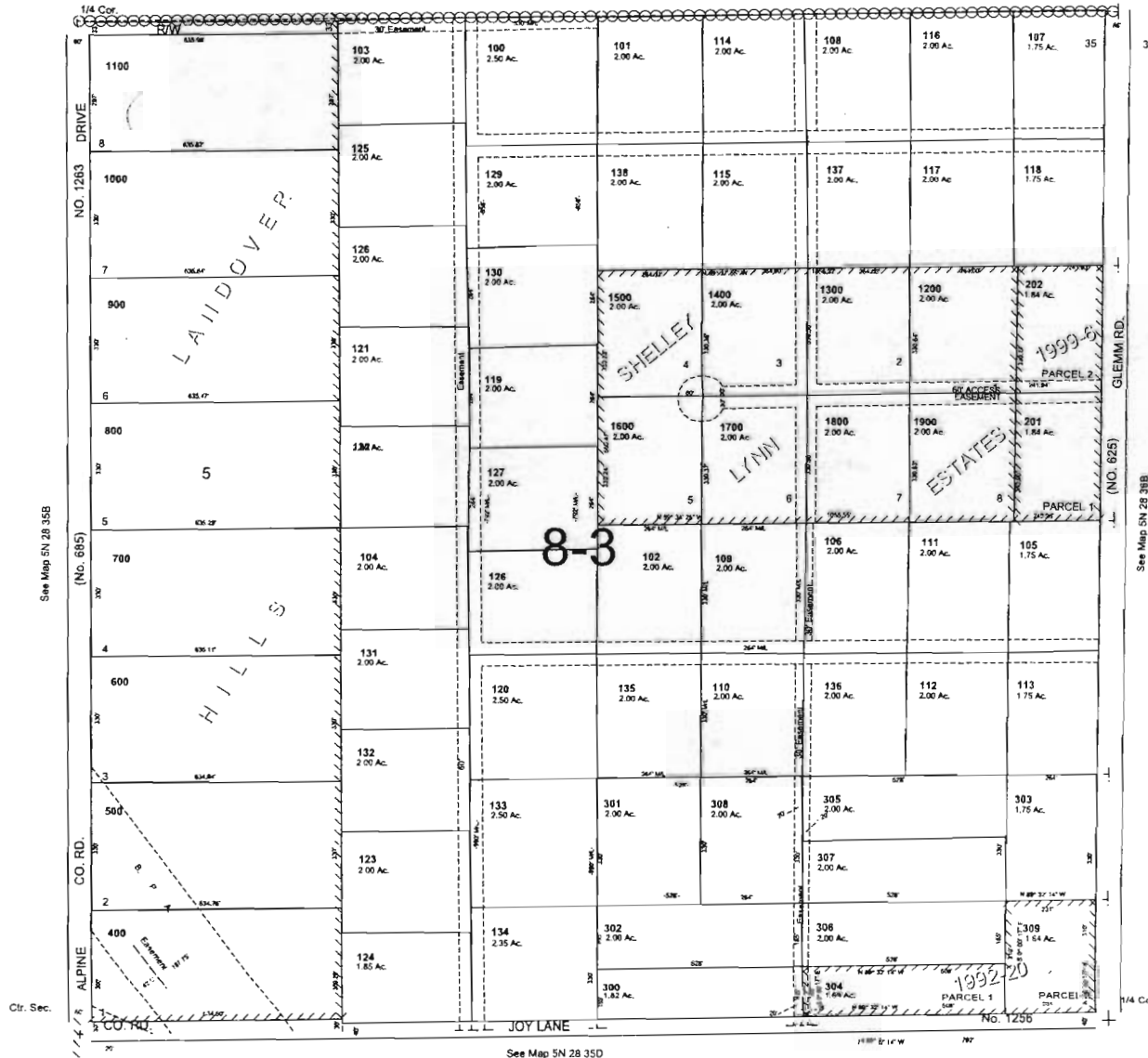
02506

5N 28 35A

AERIAL PHOTO NO. 1P-103

See Map 5N 28 26D

26 25



See Map 5N 28 35B (No. 685)

See Map 5N 28 38B

See Map 5N 28 35D

5N 28 35A

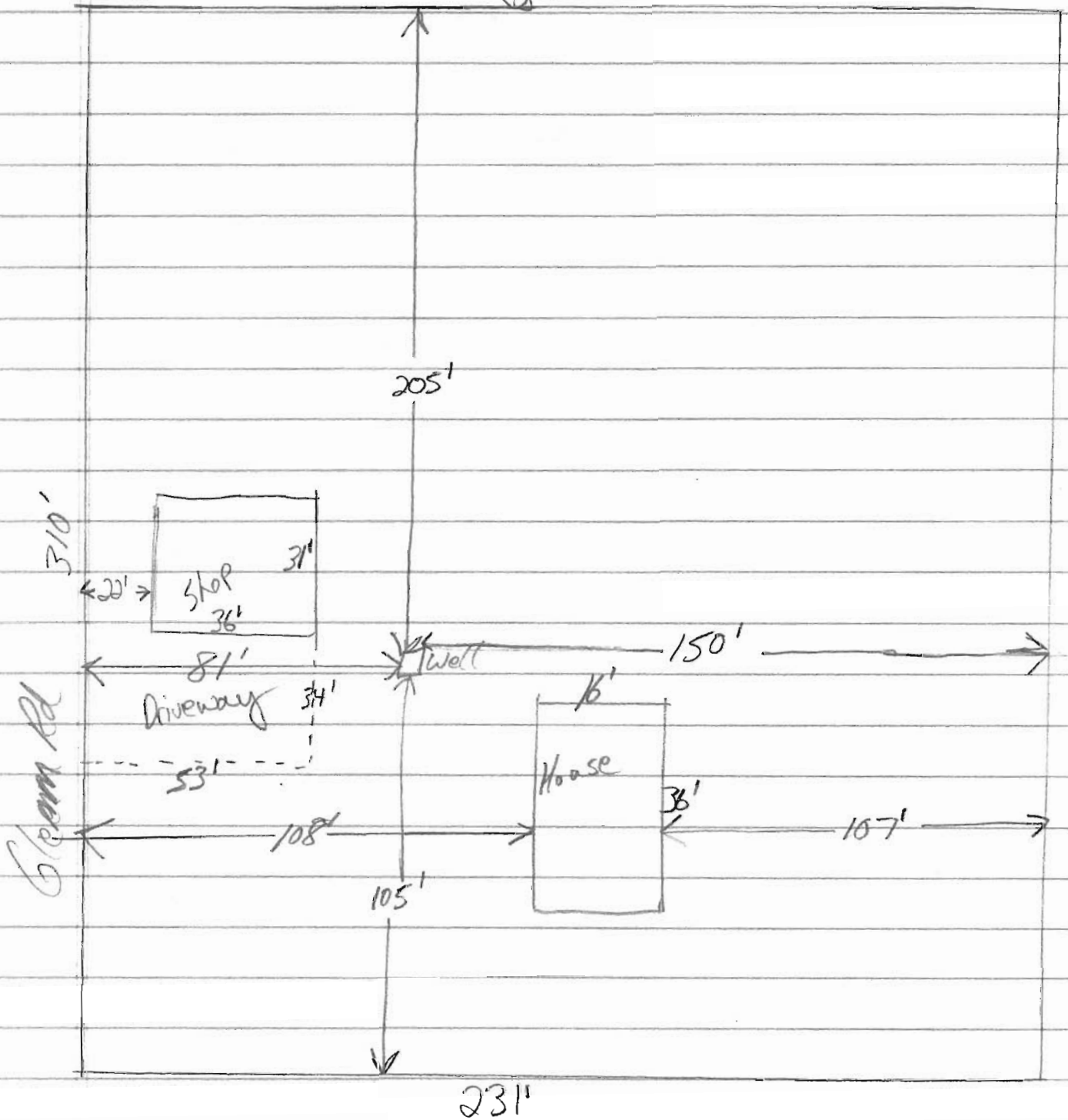
RECEIVED

SEP 07 2010

WATER RESOURCES DEPT
SALEM, OREGON

G-17421

Joy Lane



RECEIVED

SEP 07 2010

WATER RESOURCES DEPT
SALEM, OREGON

G-17421

