

ACREAGES

(TAX LOT NUMBERS FROM ASSESSOR TAX MAP 19S43)

SECTION 11: (33.49 AC.)	SWSW 15.15 AC. TL3000 SESW 18.34 AC. TL3000
SECTION 12: (57.53 AC.)	NESW 2.54 AC. TL3000 NWSW 17.54 AC. TL3000 SWSW 31.50 AC. TL4000 SESW 5.95 AC. TL3000
SECTION 13: (351.48 AC.)	NWNE 6.79 AC. TL4400 SWNE 18.09 AC. TL4400 NENW 25.93 AC. TL3000 & 4400 NWNW 23.80 AC. TL3000 & 4500 SWNW 37.59 AC. TL4500 SESW 39.55 AC. TL4400 NESW 39.63 AC. TL4400 NWSW 39.63 AC. TL4500 SWSW 35.75 AC. TL4500 SESW 18.06 AC. TL4400 NESE 4.58 AC. TL4400 NWSE 39.16 AC. TL4400 SWSE 22.04 AC. TL4400 SESE 0.88 AC. TL4400

SECTION 14: (217.66 AC.)	NENE 0.29 AC. TL3000 SWNE 14.90 AC. TL3000 SENE 31.18 AC. TL 3000 & 4600 NENW 35.05 AC. TL3000 NWNW 30.50 AC. TL3000 SWNW 2.08 AC. TL3000 SESW 2.73 AC. TL3000 NESW 3.52 AC. TL3000 NESE 38.22 AC. TL4600 NWSE 33.96 AC. TL4500 SWSE 1.59 AC. TL4600 SESE 23.64 AC. TL4600
-----------------------------	---

1000' 0 1000' 2000'

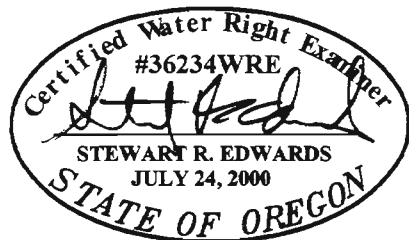
SCALE 1" = 1000'

ALL DISTANCES SHOWN HERE ARE IN FEET UNLESS NOTED OTHERWISE

PROPOSED WELL LOCATIONS

- WELL No. 1: 2300' SOUTH AND 175' EAST OF THE NE CORNER SECTION 13, T19S., R.43 E., W.M.
- WELL No. 2: 60' SOUTH AND 2245' EAST OF THE NE CORNER SECTION 13, T19S., R.43 E., W.M.
- WELL No. 3: 470' SOUTH AND 840' EAST OF THE NE CORNER SECTION 13, T19S., R.43 E., W.M.
- WELL No. 4: 3055' NORTH AND 1983 WEST OF THE SE CORNER SECTION 14, T19S., R.43 E., W.M.
- WELL No. 5: 1560' NORTH AND 1625 WEST OF THE SE CORNER SECTION 14, T19S., R.43 E., W.M.
- WELL No. 6: 1849' NORTH AND 1445 EAST OF THE SE CORNER SECTION 12, T19S., R.43 E., W.M.

LEGEND	
DISCRIPTION	SYMBOLS
SECTION LINE	---
QUARTER-QUARTER LINE	---
PROPERTY LINE	---
CONCRETE DITCH	---
CANAL	==
IRRIGATION PIPE	--- ---
SECTION CORNER	36 31 1 8
IRRIGATION WELL	⊙
PROPOSED PRIMARY WATER RIGHT AREA	660.16 ACRES



DATE SEALED : 8/31/10
CERTIFICATE RENEWAL : 12/31/11

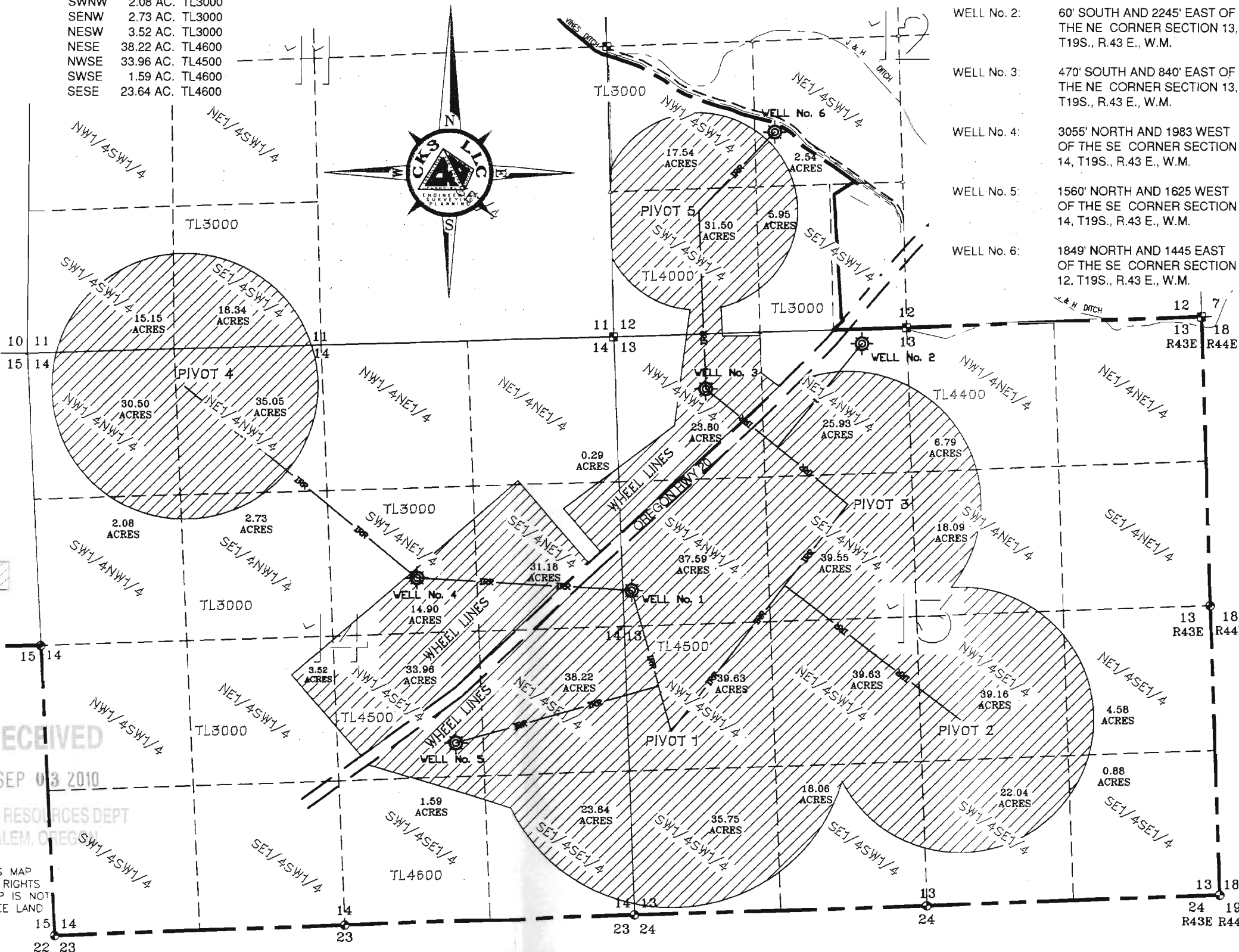
DISCLAIMER

I, STEWART R. EDWARDS, HEREBY CERTIFY: THAT THIS MAP WAS MADE TO BE PART OF THE APPLICATION FOR WATER RIGHTS SECTIONAL LINES SHOWN ARE APPROXIMATE AND THIS MAP IS NOT INTENDED FOR ANY OTHER USE AND DOES NOT GUARANTEE LAND OWNERSHIP.

G-17420

RECEIVED
SEP 03 2010

WATER RESOURCES DEPT
SALEM, OREGON



ENG. BY: STU	DATE: AUG. 25, 2010
APR. BY: STU	
DWG. BY: DKC	

#	REVISION	DATE
01		
02		
03		
04		

APPLICATION MAP
SEC. 11, 12, 13 & 14
T 19S, R 43E, W.M.
MALHEUR COUNTY, OREGON

FAITH LAND COMPANY, LLC
3716 EAST IDAHO ST. SUITE A
ELKO, NV 89601

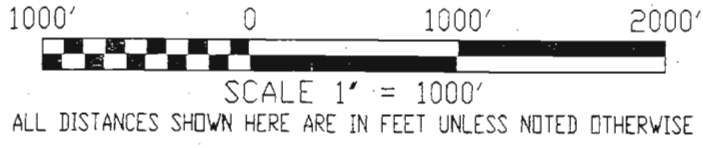
CKS, LLC
368 S.W. 5th Avenue
Ontario Oregon 97914
Phn: (541) 889-5411
Fax: (541) 889-2074

CIVIL-STRUCTURAL-ELECTRICAL
ENGINEERING, SURVEYING & PLANNING

WRI
SHEET: 1 OF 1
JOB: CO10014-A623

ACREAGES (TAX LOT NUMBERS FROM ASSESSOR TAX MAP 19S43)

SECTION 11: (33.49 AC.)	SWSW 15.15 AC. TL3000 SESW 18.34 AC. TL3000	SECTION 14: (217.66 AC.)	NENE 0.29 AC. TL3000 SWNE 14.90 AC. TL3000 SENE 31.18 AC. TL 3000 & 4600 NENW 35.05 AC. TL3000 NWNW 30.50 AC. TL3000 SWNW 2.08 AC. TL3000 SENW 2.73 AC. TL3000 NESW 3.52 AC. TL3000 NESE 38.22 AC. TL4600 NWSE 33.96 AC. TL4500 SWSE 1.59 AC. TL4600 SESE 23.64 AC. TL4600
SECTION 12: (57.53 AC.)	NESW 2.54 AC. TL3000 NWSW 17.54 AC. TL3000 SWSW 31.50 AC. TL4000 SESW 5.95 AC. TL3000		
SECTION 13: (351.48 AC.)	NWNE 6.79 AC. TL4400 SWNE 18.09 AC. TL4400 NENW 25.93 AC. TL3000 & 4400 NWNW 23.80 AC. TL3000 & 4500 SWNW 37.59 AC. TL4500 SENW 39.55 AC. TL4400 NESW 39.63 AC. TL4400 NWSW 39.63 AC. TL4500 SWSW 35.75 AC. TL4500 SESW 18.06 AC. TL4400 NESE 4.58 AC. TL4400 NWSE 39.16 AC. TL4400 SWSE 22.04 AC. TL4400 SESE 0.88 AC. TL4400		

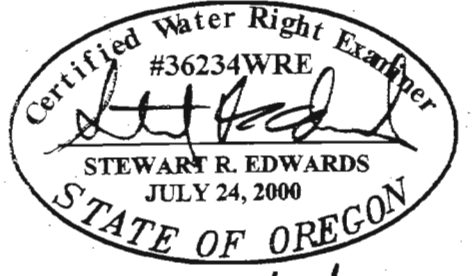
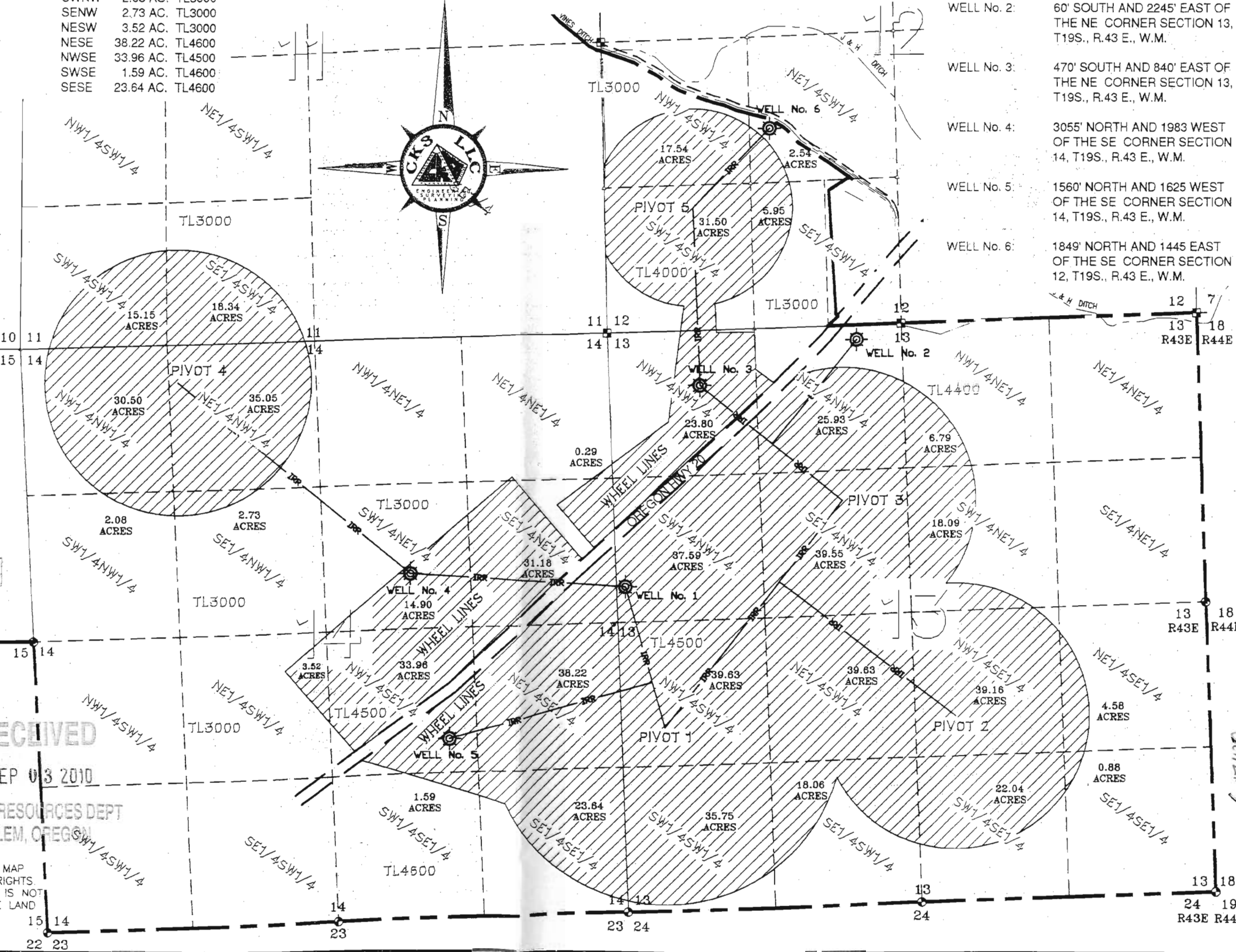


WORK COPY

PROPOSED WELL LOCATIONS

- WELL No. 1: 2300' SOUTH AND 175' EAST OF THE NE CORNER SECTION 13, T19S., R.43 E., W.M.
- WELL No. 2: 60' SOUTH AND 2245' EAST OF THE NE CORNER SECTION 13, T19S., R.43 E., W.M.
- WELL No. 3: 470' SOUTH AND 840' EAST OF THE NE CORNER SECTION 13, T19S., R.43 E., W.M.
- WELL No. 4: 3055' NORTH AND 1983 WEST OF THE SE CORNER SECTION 14, T19S., R.43 E., W.M.
- WELL No. 5: 1560' NORTH AND 1625 WEST OF THE SE CORNER SECTION 14, T19S., R.43 E., W.M.
- WELL No. 6: 1849' NORTH AND 1445 EAST OF THE SE CORNER SECTION 12, T19S., R.43 E., W.M.

DISCRIPTION	SYMBOLS
SECTION LINE	---
QUARTER-QUARTER LINE	- - - - -
PROPERTY LINE	---
CONCRETE DITCH	- - - - -
CANAL	====
IRRIGATION PIPE	--- --- ---
SECTION CORNER	36 31 1 6
IRRIGATION WELL	⊙
PROPOSED PRIMARY WATER RIGHT AREA	660.16 ACRES



RECEIVED
SEP 03 2010
WATER RESOURCES DEPT
SALEM, OREGON

DATE SEALED : 8/31/10
CERTIFICATE RENEWAL : 12/31/11

DISCLAIMER

I, STEWART R. EDWARDS, HEREBY CERTIFY: THAT THIS MAP WAS MADE TO BE PART OF THE APPLICATION FOR WATER RIGHTS. SECTIONAL LINES SHOWN ARE APPROXIMATE AND THIS MAP IS NOT INTENDED FOR ANY OTHER USE AND DOES NOT GUARANTEE LAND OWNERSHIP.

THIS DRAWING, & ALL INFORMATION HEREIN, REMAIN THE PROPERTY OF CKS, LLC. ALL RIGHTS ARE EXPRESSLY RESERVED & IT MAY NOT BE REPRODUCED IN WHOLE OR IN PART WITHOUT THE EXPRESS WRITTEN CONSENT OF CKS, LLC.

ENG. BY:	STU
APR. BY:	STU
DWG. BY:	DKC
DATE:	AUG. 25, 2010

#	REVISION	DATE
01		
02		
03		
04		

APPLICATION MAP
SEC. 11, 12, 13 & 14
T19S, R43E, W.M.
MALHEUR COUNTY, OREGON

CKS, LLC
368 S.W. 5th Avenue
Ontario, Oregon 97914
Phn: (541) 889-5411
Fax: (541) 889-2074

FAITH LAND COMPANY, LLC
3716 EAST IDAHO ST., SUITE A
ELKO, NV 89801

WRI
SHEET: 1 OF 1
JOB: CO10014-A623

CKS, LLC
CIVIL-STRUCTURAL-ELECTRICAL
ENGINEERING, SURVEYING & PLANNING