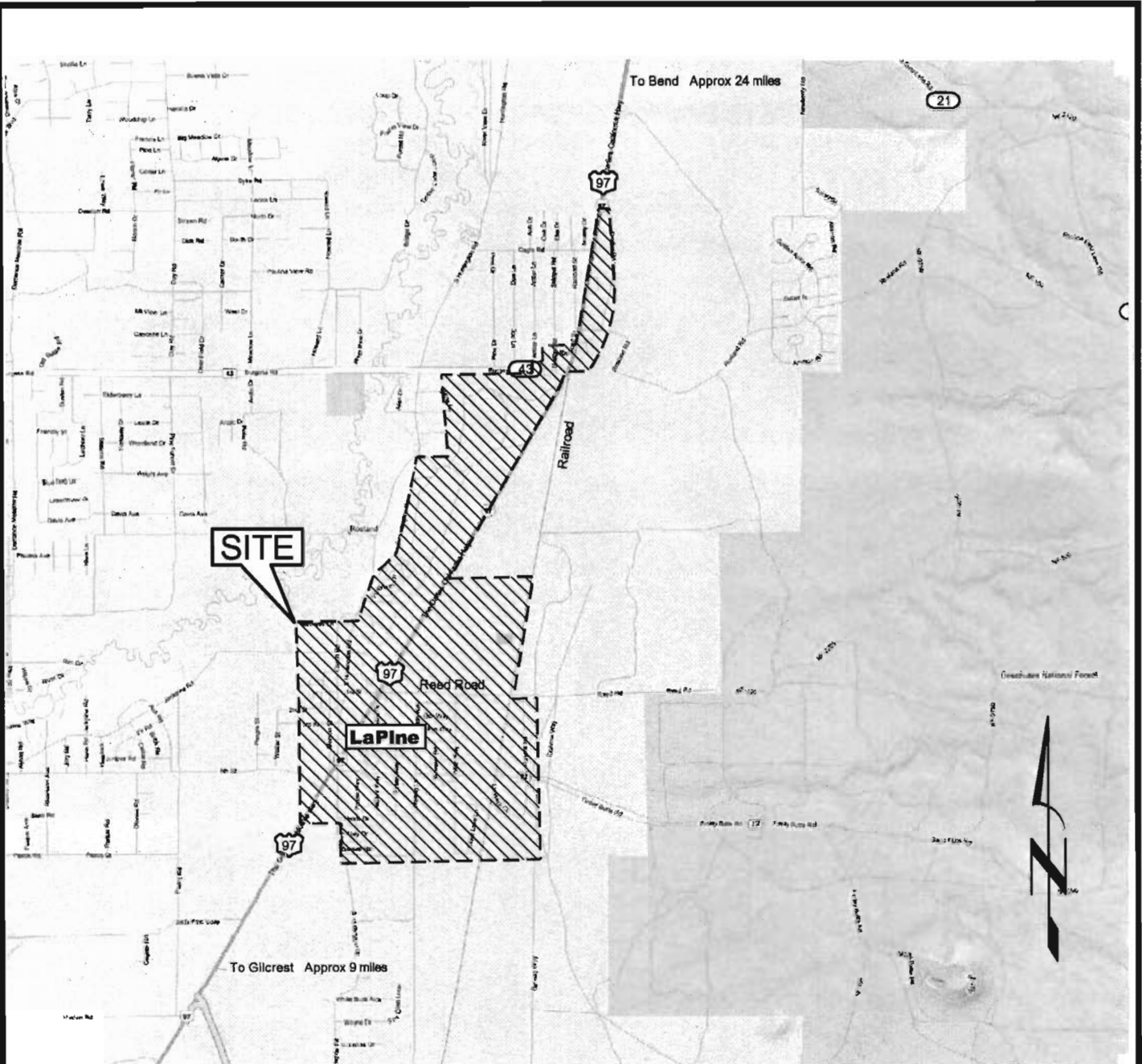
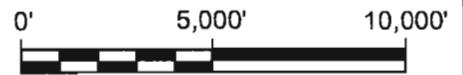


G:\1100\1103 LaPine\101\Cad\Water\W1103101\_F1\_VicMap\_POU 15:30 07/28/2010.SS



Bing Internet Map



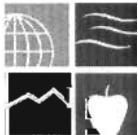
SCALE: 1" = 5,000'

RECEIVED

SEP 13 2010

WATER RESOURCES DEPT  
SALEM, OREGON

**NEWTON**  
**CONSULTANTS INC.**  
 Earth, Water and Rock Specialists  
 Ph: 541 504-9960 Fax: 541 504-9361



Vicinity Map  
 LaPine Water District  
 Deschutes County, Oregon

DESIGNED BY:  
**K. Turner**

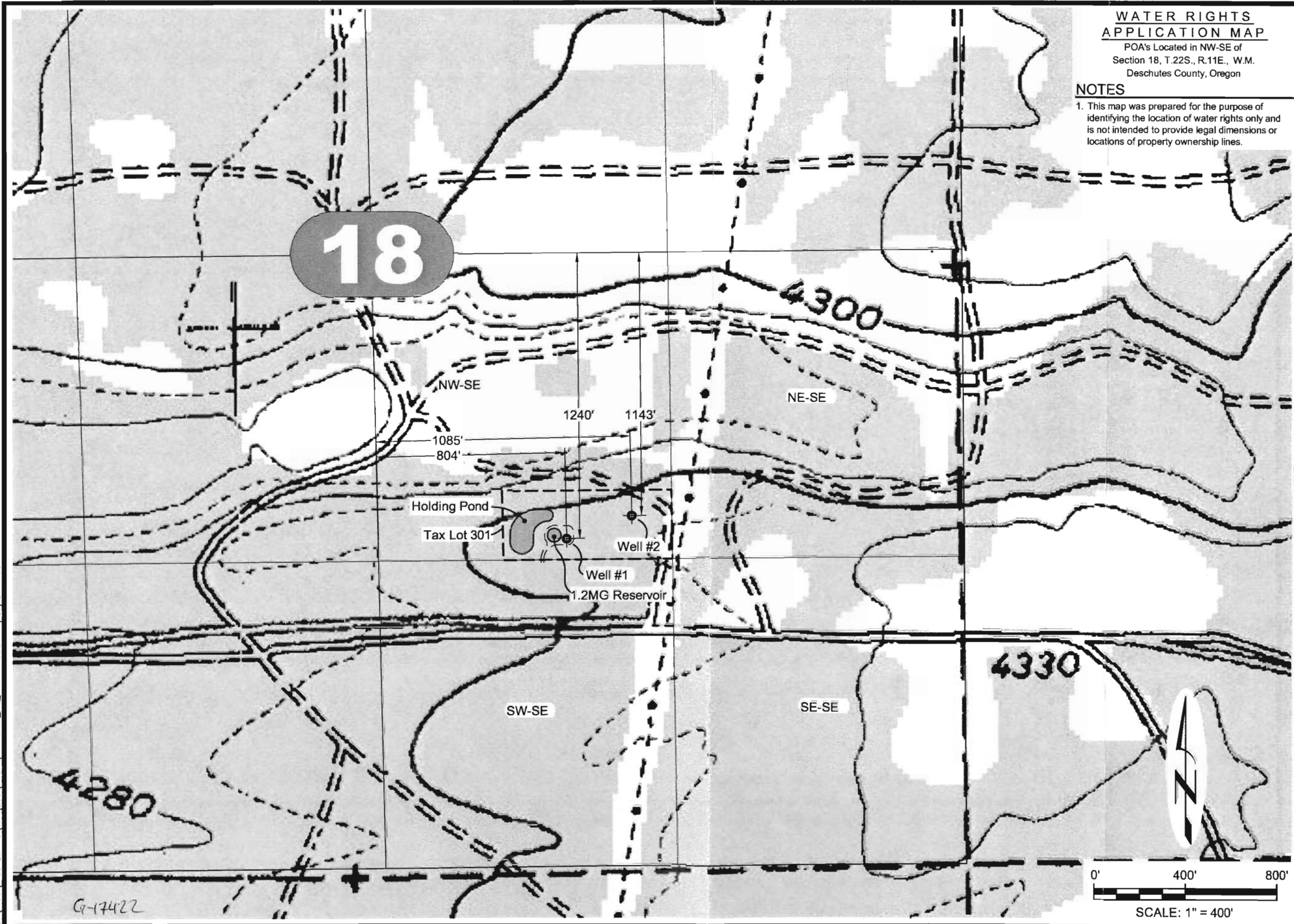
DRAWN BY:  
**S. Schenck**

DATE:  
**AUG 2010**

PROJECT NO.  
**1103-101**

FIGURE **1**

G:\1100\1103 LaPine\101\Cad\Water\W1103101\_F2\_POU 14:22 07/28/2010 SS



**WATER RIGHTS APPLICATION MAP**

POA's Located in NW-SE of  
Section 18, T.22S., R.11E., W.M.  
Deschutes County, Oregon

**NOTES**

1. This map was prepared for the purpose of identifying the location of water rights only and is not intended to provide legal dimensions or locations of property ownership lines.

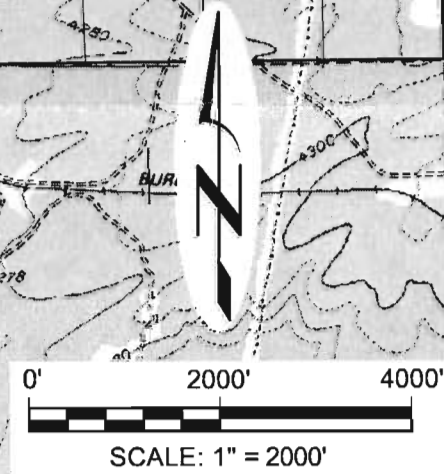
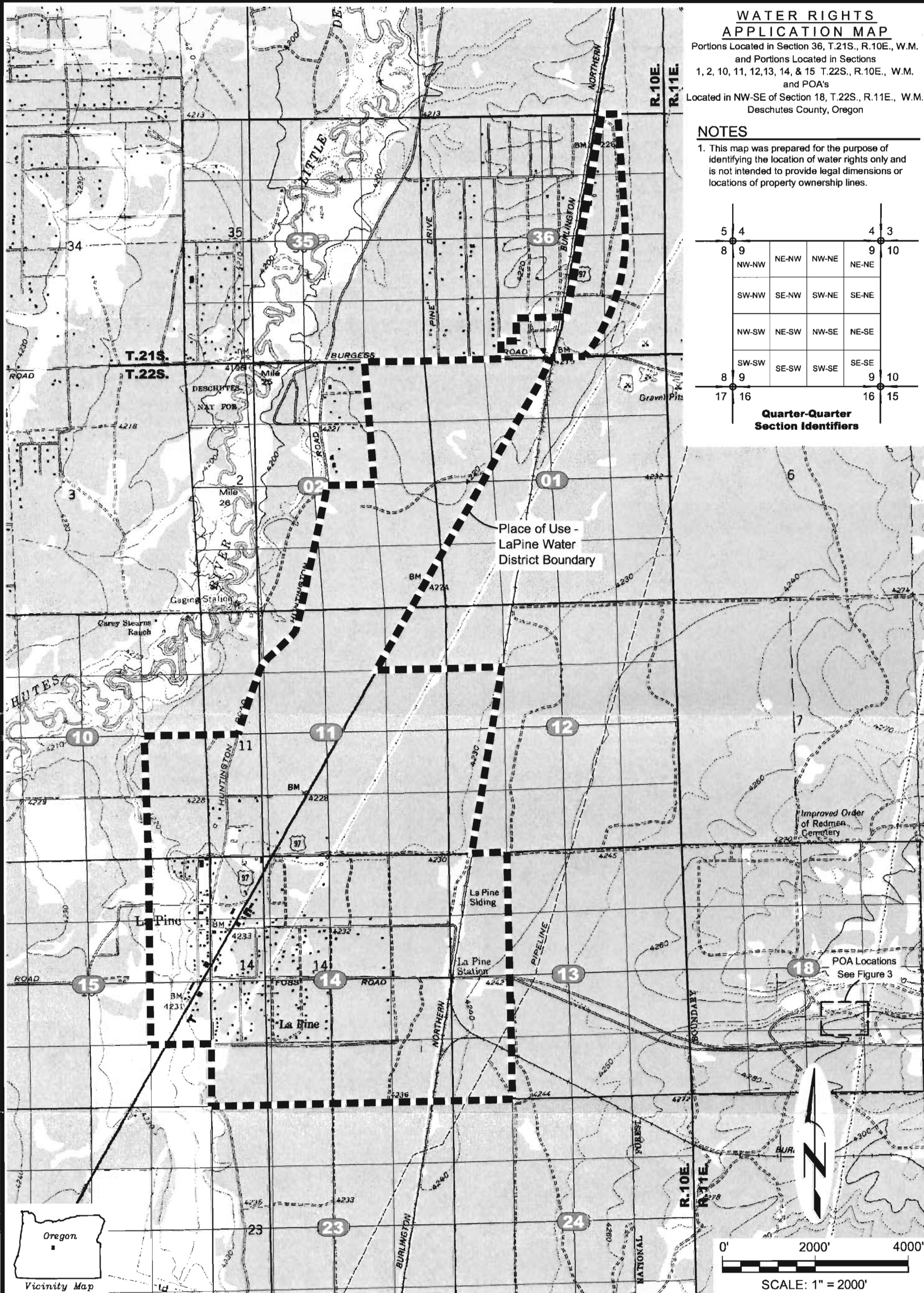
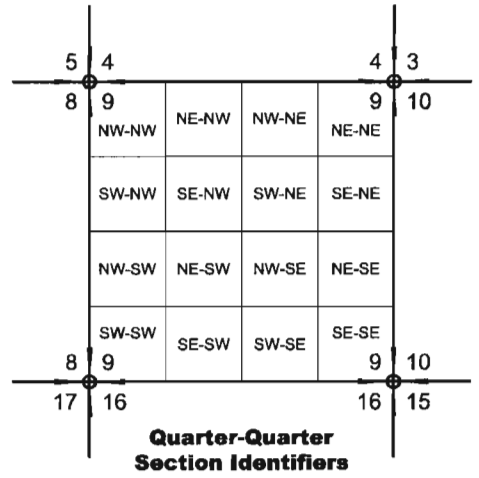
|                                                                                                                                                                                                    |                                                                  |                                                                                       |                                  |
|----------------------------------------------------------------------------------------------------------------------------------------------------------------------------------------------------|------------------------------------------------------------------|---------------------------------------------------------------------------------------|----------------------------------|
| <br><b>NEWTON CONSULTANTS INC.</b><br>Earth, Water and Rock Specialists<br>Ph. 541 504-8960 Fax. 541 504-8961 | RECEIVED<br>SEP 13 2010<br>WATER RESOURCES DEPT<br>SALEM, OREGON | POA's - Wells 1 & 2 Location Map<br>LaPine Water District<br>Deschutes County, Oregon | PROJECT NO. 1103-101<br>FIGURE 3 |
|                                                                                                                                                                                                    | DATE: AUG 2010                                                   | DRAWN BY: S.Schenck                                                                   | DESIGNED BY: K.Turner            |

### WATER RIGHTS APPLICATION MAP

Portions Located in Section 36, T.21S., R.10E., W.M.  
 and Portions Located in Sections  
 1, 2, 10, 11, 12, 13, 14, & 15 T.22S., R.10E., W.M.  
 and POA's  
 Located in NW-SE of Section 18, T.22S., R.11E., W.M.  
 Deschutes County, Oregon

#### NOTES

1. This map was prepared for the purpose of identifying the location of water rights only and is not intended to provide legal dimensions or locations of property ownership lines.



**NEWTON CONSULTANTS INC.**  
 Earth, Water and Rock Specialists  
 Ph: 541 504-9960 Fax: 541 504-9961

**RECEIVED** Water Rights Application Map  
 SEP 13 2010  
 WATER RESOURCES DEPT  
 SALEM, OREGON  
 LaPine Water District  
 Deschutes County, Oregon

|                           |                         |                   |                         |             |
|---------------------------|-------------------------|-------------------|-------------------------|-------------|
| DESIGNED BY:<br>K. Turner | DRAWN BY:<br>S. Schenck | DATE:<br>AUG 2010 | PROJECT NO.<br>1103-101 | FIGURE<br>2 |
|---------------------------|-------------------------|-------------------|-------------------------|-------------|

6-1472