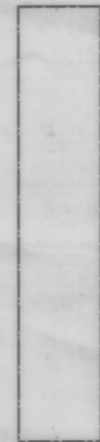
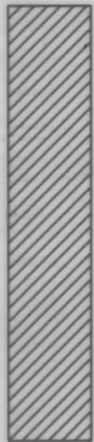


SCALE 1" = 1320'



Lands with Primary rights from well #2 Certificate #41266 and supplemental rights from well No. 3 (G-12420), and supplemental rights from new well No. 5.



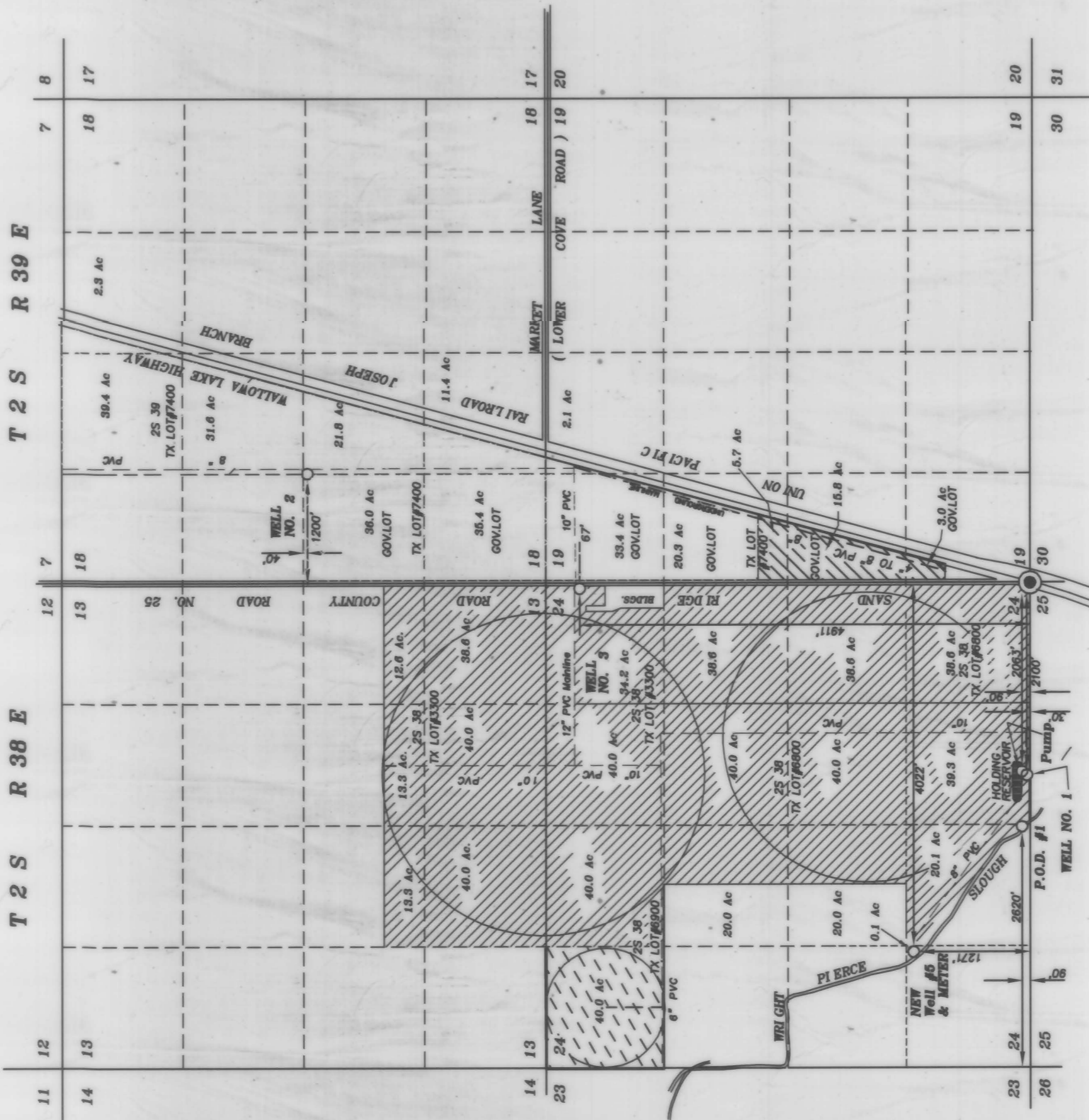
Lands with Primary rights from P.O.D. #1 Certificate #42771 & 42769. Supplemental rights from well No. 1 and well No. 3 Permit (G-12420), as well as supplemental rights from new well No. 5.



Lands with Primary rights from well #3 Permit (G-12420). And supplemental rights from wells #1(Cert.# 42771 & 42769), #2(Cert.# 41266) and new well No. 5.



Lands with Primary rights from well #1 Certificate #42768 and supplemental rights from well #3(Permit #12420), well #2(Cert.# 41266) and new well No. 5.



RECEIVED

SEP 16 2010

WATER RESOURCES DEPT
SALEM, OREGON

FINAL PROOF MAP OF SUPPLEMENTAL WATER RIGHTS FROM NEW WELL #5

FOR
JOHN C. CUTHBERT

BY

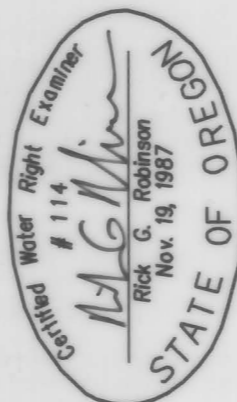
BAGETT - GRIFFITH & BLACKMAN
2006 ADAMS AVENUE
LAGRANDE, OREGON 97650

June 11, 2010

APPLICATION NO. G-16200

PERMIT NUMBER G-15901

COBU MAP # 0537



Note: The preparation of this map was for the purpose of identifying the water right and has no intent to provide dimensions or location of property ownership lines. Location information shown hereon was furnished by the applicant.