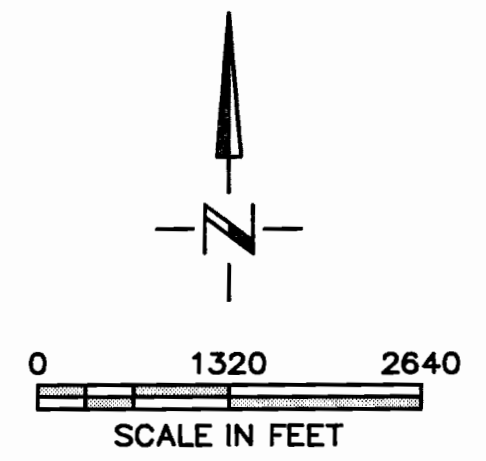


INLAND LAND CO., LLC
GROUND WATER PERMIT APPLICATION MAP
MORROW COUNTY, OREGON
TOWNSHIPS 3 & 4 NORTH, RANGE 24 EAST, W.M.

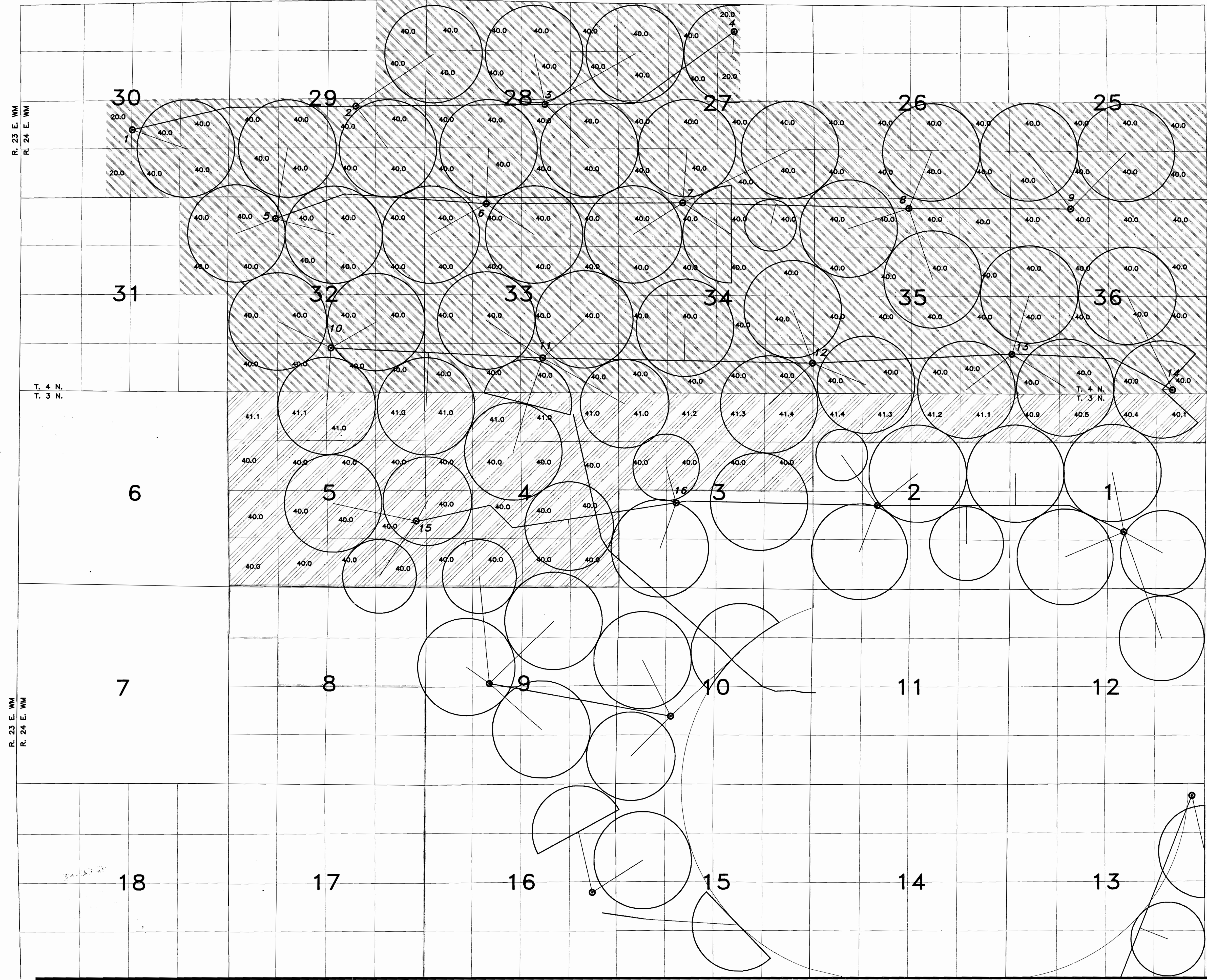


NOTE: THE PURPOSE OF THIS MAP IS TO IDENTIFY THE APPROXIMATE LOCATION OF THE WATER RIGHT. IT IS NOT INTENDED TO PROVIDE INFORMATION RELATIVE TO THE LOCATION OF PROPERTY OWNERSHIP BOUNDARY LINES.

POINTS OF APPROPRIATION

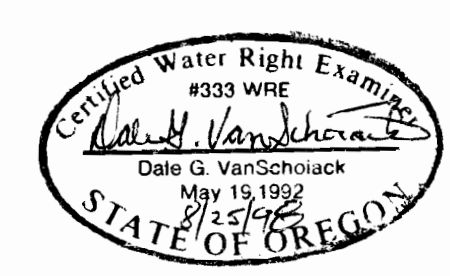
- WELL #1
LOCATED 1850' NORTH AND 2550' WEST FROM THE SOUTHEAST CORNER OF SECTION 30, T4N, R24E, WM.
- WELL #2
LOCATED 2450' NORTH AND 1850' WEST FROM THE SOUTHEAST CORNER OF SECTION 29, T4N, R24E, WM.
- WELL #3
LOCATED 2500' NORTH AND 1950' WEST FROM THE SOUTHEAST CORNER OF SECTION 28, T4N, R24E, WM.
- WELL #4
LOCATED 790' SOUTH AND 2380' WEST FROM THE NORTHEAST CORNER OF SECTION 27, T4N, R24E, WM.
- WELL #5
LOCATED 550' SOUTH AND 1250' EAST FROM THE NORTHWEST CORNER OF SECTION 32, T4N, R24E, WM.
- WELL #6
LOCATED 150' SOUTH AND 1650' EAST FROM THE NORTHWEST CORNER OF SECTION 33, T4N, R24E, WM.
- WELL #7
LOCATED 150' SOUTH AND 1700' EAST FROM THE NORTHWEST CORNER OF SECTION 34, T4N, R24E, WM.
- WELL #8
LOCATED 250' SOUTH AND 2550' EAST FROM THE NORTHWEST CORNER OF SECTION 35, T4N, R24E, WM.
- WELL #9
LOCATED 300' SOUTH AND 1650' EAST FROM THE NORTHWEST CORNER OF SECTION 36, T4N, R24E, WM.
- WELL #10
LOCATED 1150' NORTH AND 2500' WEST FROM THE SOUTHEAST CORNER OF SECTION 32, T4N, R24E, WM.
- WELL #11
LOCATED 900' NORTH AND 2000' WEST FROM THE SOUTHEAST CORNER OF SECTION 33, T4N, R24E, WM.
- WELL #12
LOCATED 800' NORTH AND 100' WEST FROM THE SOUTHEAST CORNER OF SECTION 34, T4N, R24E, WM.
- WELL #13
LOCATED 1100' NORTH AND 100' EAST FROM THE SOUTHWEST CORNER OF SECTION 36, T4N, R24E, WM.
- WELL #14
LOCATED 100' NORTH AND 900' WEST FROM THE SOUTHEAST CORNER OF SECTION 36, T4N, R24E, WM.
- WELL #15
LOCATED 1800' NORTH AND 200' WEST FROM THE SOUTHEAST CORNER OF SECTION 5, T3N, R24E, WM.
- WELL #16
LOCATED 2250' NORTH AND 1550' EAST FROM THE SOUTHWEST CORNER OF SECTION 3, T3N, R24E, WM.

NAVAL RESERVATION BOUNDARY



LEGEND

- PROJECT BOUNDARY
- AREA PROPOSED TO BE DEVELOPED FOR IRRIGATION
- TAX LOT 105, in Township 4 North, Range 24 East, W.M.
- TAX LOT 100, in Township 3 North, Range 24 East, W.M.
- PROPOSED WELL SITE (TYP)



RECEIVED
 AUG 27 1999
 WATER RESOURCES DEPT.
 SALEM, OREGON
 G-14827