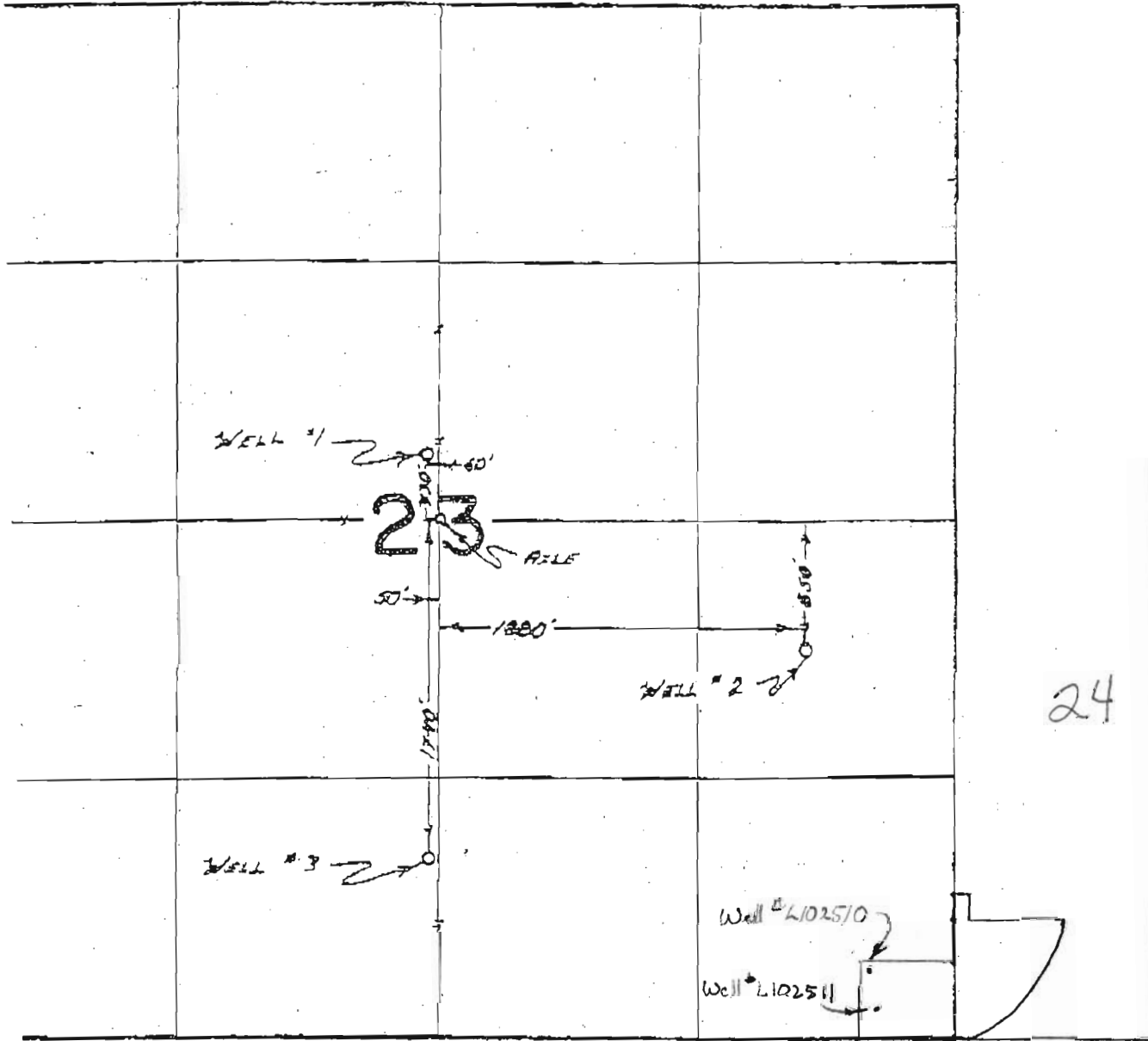


T. 23 S. R. 30 E. W.M.

Approx SCALE
1" = 800 FEET



24

Well # L102510 Located west 460 ft, 340 feet North of S.E. Corner Section 23

Section Corner

Well # L102511 Located west 411 ft, 155 feet North of S.E. Corner Section 23

RECEIVED

SEP 24 2010

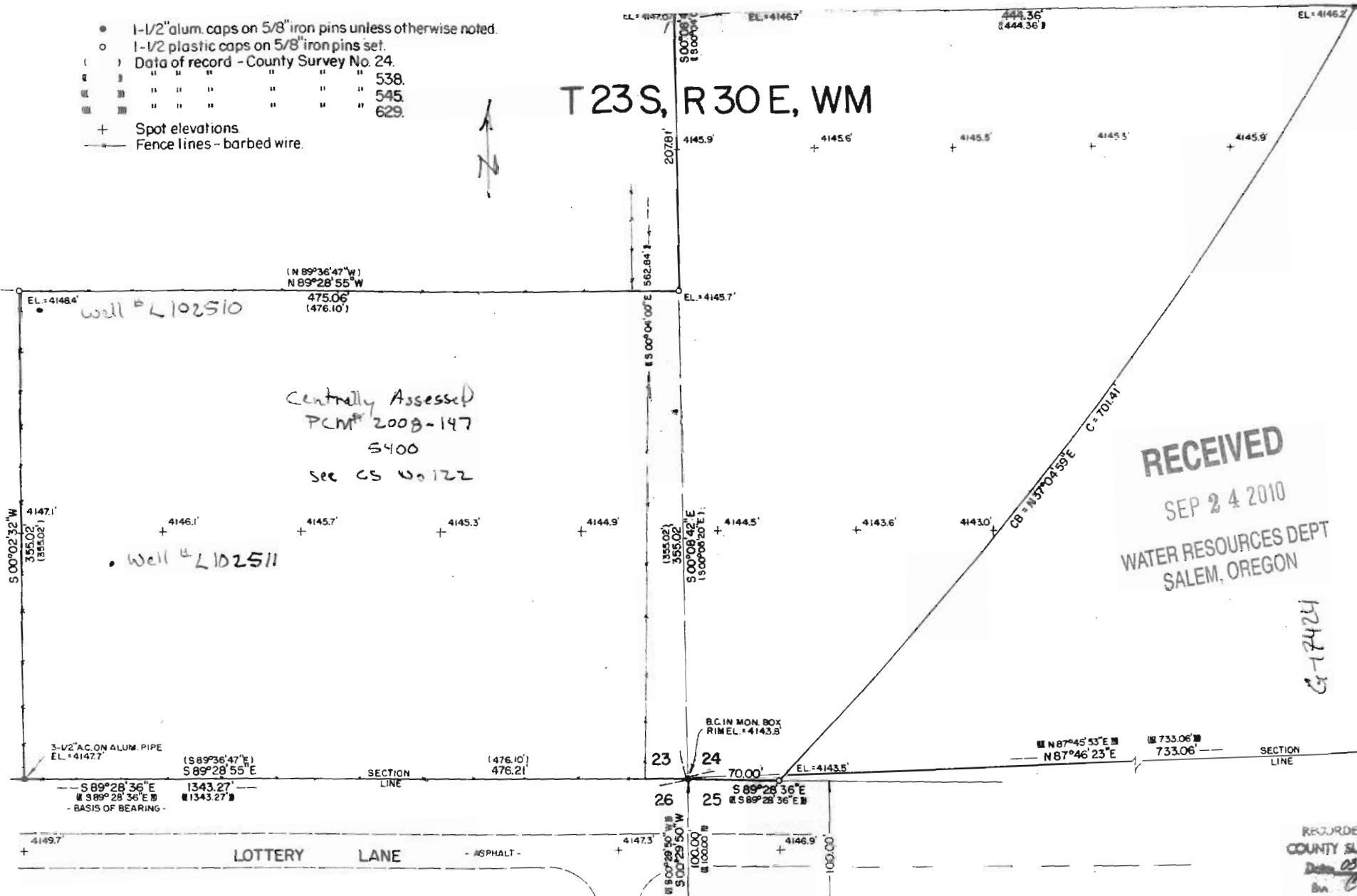
25

WATER RESOURCES DEPT
SALEM, OREGON

G-17424

- 1-1/2" alum. caps on 5/8" iron pins unless otherwise noted.
- 1-1/2 plastic caps on 5/8" iron pins set.
- () Data of record - County Survey No. 24.
- ▣ " " " " " " 538.
- ▣ " " " " " " 545.
- ▣ " " " " " " 629.
- + Spot elevations
- - - Fence lines - barbed wire.

T 23S, R 30E, WM



RECEIVED
 SEP 24 2010
 WATER RESOURCES DEPT
 SALEM, OREGON

G-7424

RECORDED
 COUNTY SURV
 Date 05-2
 In 05

Approx Scale ⇒ 1" = 100'