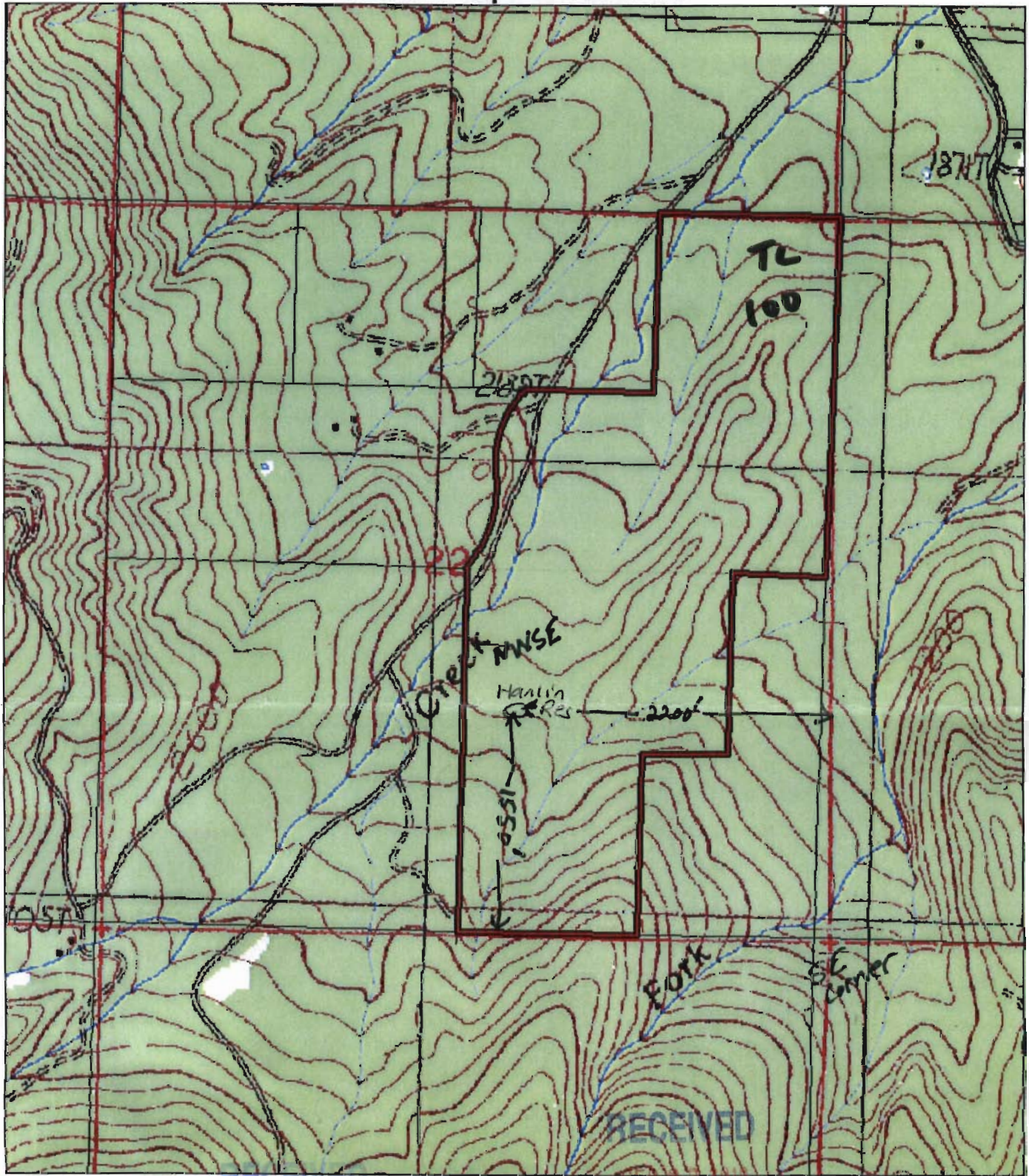

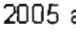
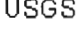


Assessor's Map 39-05-22 tl 100



Legend

-  Taxlots
-  2005 aeriels
-  USGS 1:24000 Quads

RECEIVED
AUG 27 2010
WATER RESOURCES DEPT
SALEM, OREGON

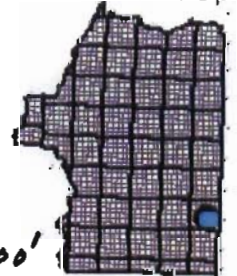
WATER RESOURCES DEPT
SALEM, OREGON
The information on this map is furnished for general information purposes only. This information is provided without warranties of any kind, express or implied, and it should not be used to support any purchase or other investment. Neither Josephine County, Oreg. Junction, nor Grant's Pass will accept responsibility for any errors or inaccuracies in the depicted information.



Scale
1:12000



Locator Map



Creation date: Monday, July 19, 2010 C:\ucogc\p\map\p\ma.apr

1 inch = 1000'

R-87655-A4T-

Pond is 2200' west and 1550' north of SE corner
39-5-22 in the NWSE QUARTER