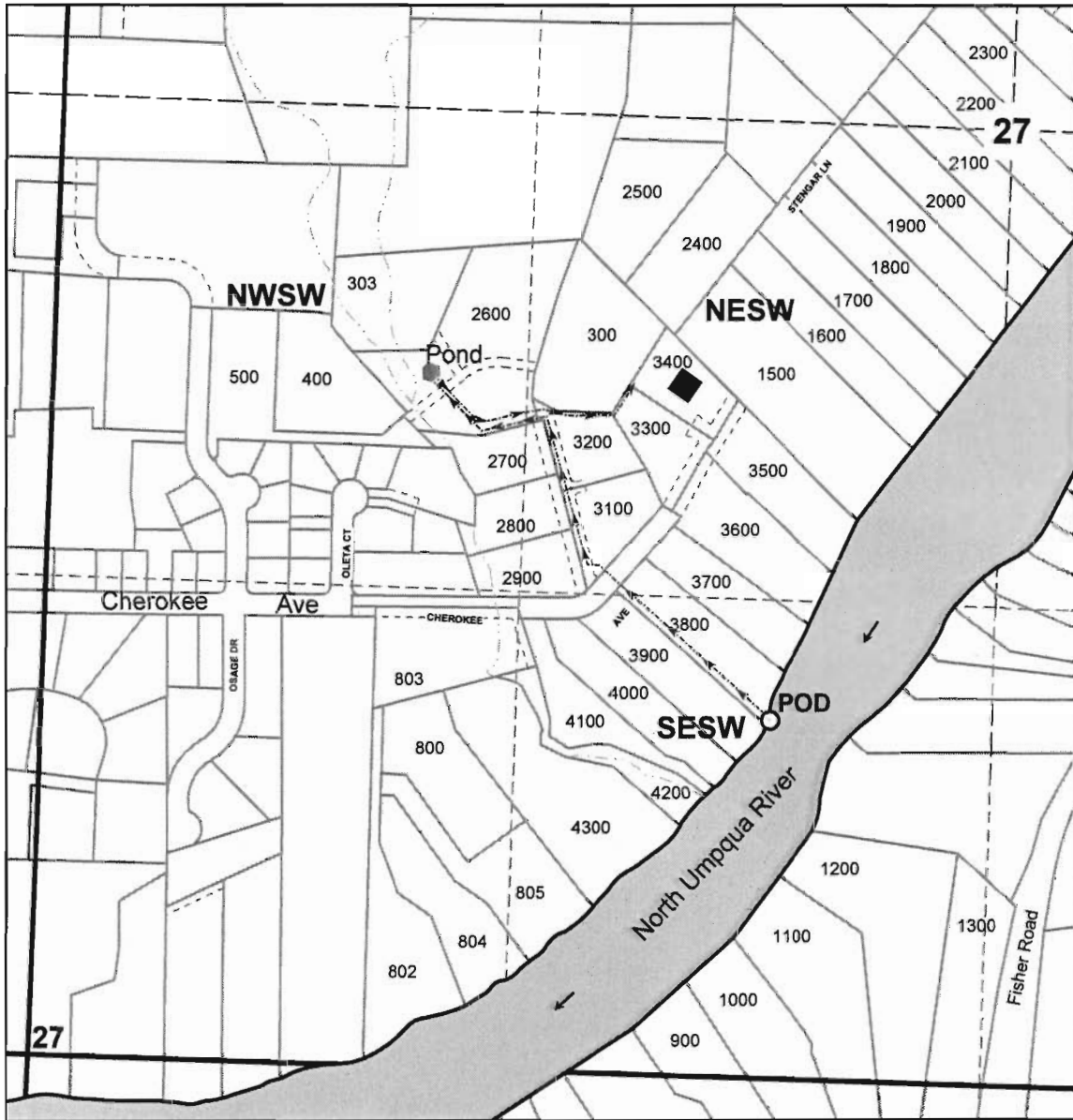


SEC.27 T.26S. R.6W. W.M.
DOUGLAS COUNTY
Scale 1" = 500'



POD is 1640' south and 635' west from the center of Section 27.

S-8768

RECEIVED
OCT 04 2010
WATER RESOURCES DEPT
SALEM OREGON

THIS MAP WAS PREPARED FOR ASSESSMENT PURPOSE ONLY.

SW1/4 SEC.27 T.26S. R.6W. W.M.
DOUGLAS COUNTY
1" = 200'

REVISED ON
12-17-09

26 6 27C
& INDEX

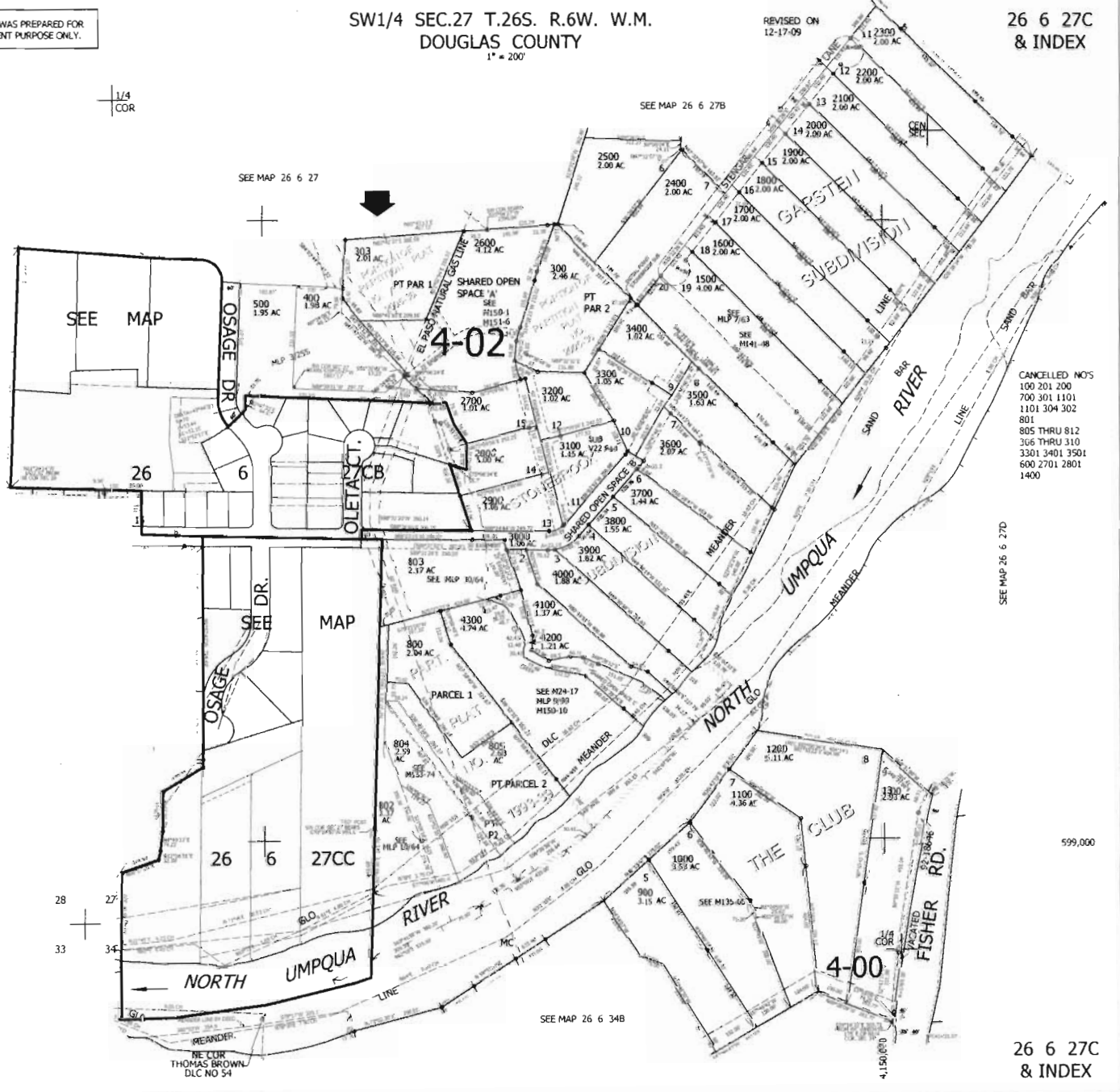
1/4
COR

SEE MAP 26 6 27B

SEE MAP 26 6 27



4-02



- CANCELLED NOS
- 100 201 200
- 700 301 1101
- 1101 304 302
- 801
- 805 THRU 812
- 166 THRU 310
- 3301 3401 3501
- 600 2701 2801
- 1400

SEE MAP 26 6 28D

SEE MAP 26 6 27D

599,000

SEE MAP 26 6 34B

26 6 27C
& INDEX

RECEIVED

OCT 04 2010

WATER RESOURCES DEPT
SALEM, OREGON

S-87656

RECEIVED
 OCT 04 2010
 WATER RESOURCES DEPT
 SALEM, OREGON

COUNTY SURVEYORS FILE DATA
 DO NOT REMOVE FROM OFFICE

S-07662

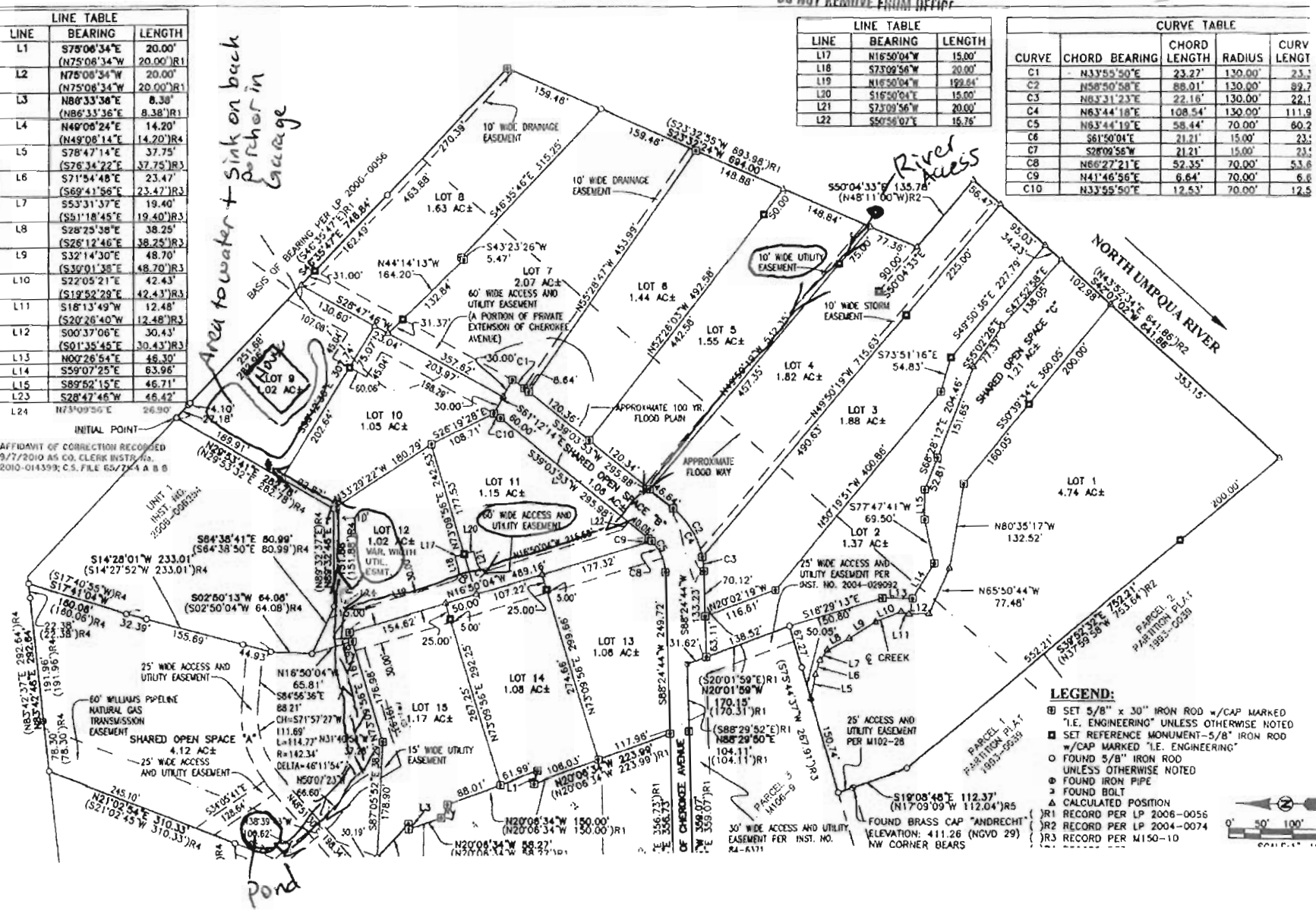
LINE	BEARING	LENGTH
L1	S75°06'34"E	20.00'
	(N75°06'34"W	20.00')R1
L2	N75°06'34"W	20.00'
	(N75°06'34"W	20.00')R1
L3	N80°33'36"E	8.30'
	(N86°33'36"E	8.38')R1
L4	N49°08'24"E	14.20'
	(N49°08'24"E	14.20')R4
L5	S78°47'14"E	37.75'
	(S76°34'22"E	37.75')R3
L6	S71°54'48"E	23.47'
	(S69°41'56"E	23.47')R3
L7	S53°31'37"E	19.40'
	(S51°18'45"E	19.40')R3
L8	S28°25'38"E	38.25'
	(S26°12'46"E	38.25')R3
L9	S32°14'30"E	48.70'
	(S30°01'38"E	48.70')R3
L10	S27°05'21"E	42.43'
	(S19°52'29"E	42.43')R3
L11	S18°13'49"W	12.48'
	(S20°26'40"W	12.48')R3
L12	S00°37'06"E	30.43'
	(S01°35'45"E	30.43')R3
L13	N00°26'54"E	46.30'
	S59°07'25"E	63.96'
L14	S89°52'15"E	46.71'
L15	S28°47'45"W	46.42'
L24	N73°09'50"E	26.90'

LINE	BEARING	LENGTH
L17	N16°50'04"W	15.00'
L18	S73°09'56"W	20.00'
L19	N16°50'04"W	192.64'
L20	S16°50'04"E	15.00'
L21	S73°09'56"W	20.00'
L22	S50°50'02"E	15.76'

CURVE	CHORD BEARING	CHORD LENGTH	RADIUS	CURV LENGTH
C1	N33°55'50"E	23.27'	130.00'	23.1
C2	N58°50'58"E	88.01'	130.00'	89.2
C3	N63°31'23"E	22.16'	130.00'	22.1
C4	N63°44'18"E	108.54'	130.00'	111.9
C5	N63°44'19"E	58.44'	70.00'	60.2
C6	S61°50'04"E	21.21'	15.00'	23.1
C7	S28°09'56"W	21.21'	15.00'	23.1
C8	N66°27'21"E	52.35'	70.00'	53.6
C9	N41°46'56"E	6.64'	70.00'	6.6
C10	N33°55'50"E	12.53'	70.00'	12.5

INITIAL POINT
 AFFIDAVIT OF CORRECTION RECORDED
 9/7/2010 AS CO. CLERK INSTR. NO.
 2010-014393; C.S. FILE 65/724 A & B

VOL. 22 PA



LEGEND:
 ■ SET 5/8" x 30" IRON ROD w/CAP MARKED "I.E. ENGINEERING" UNLESS OTHERWISE NOTED
 ■ SET REFERENCE MONUMENT-5/8" IRON ROD w/CAP MARKED "I.E. ENGINEERING"
 ○ FOUND 5/8" IRON ROD UNLESS OTHERWISE NOTED
 ● FOUND IRON PIPE
 + FOUND BOLT
 ▲ CALCULATED POSITION
 }R1 RECORD PER LP 2006-0056
 }R2 RECORD PER LP 2004-0074
 }R3 RECORD PER M150-10

FOUND BRASS CAP "ANDRECHT" ELEVATION: 411.26 (NGVD 29) NW CORNER BEARS

RECEIVED
 OCT 0'4 2010
 WATER RESOURCES DEPT
 SALEM, OREGON

COUNTY SURVEYORS FILE DAI;
 DO NOT REMOVE FROM OFFICE

58765

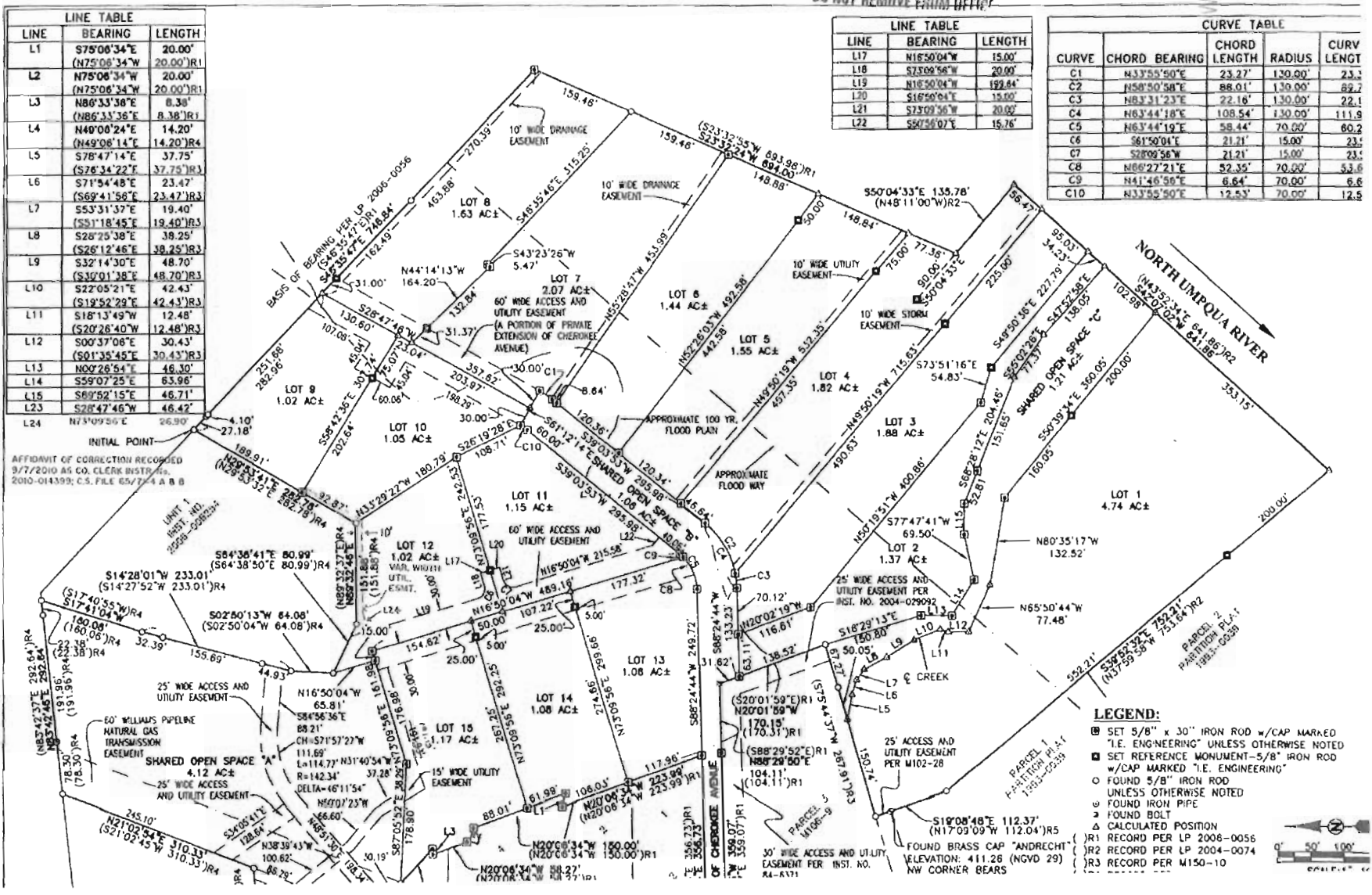
LINE	BEARING	LENGTH
L1	S75°06'34"E	20.00'
	(N75°06'34"W	20.00')R1
L2	N75°06'34"W	20.00'
	(N75°06'34"W	20.00')R1
L3	N86°33'38"E	8.38'
	(N86°33'38"E	8.38')R1
L4	N40°06'24"E	14.20'
	(N49°06'14"E	14.20')R4
L5	S78°47'14"E	37.75'
	(S76°34'22"E	37.75')R3
L6	S71°54'48"E	23.47'
	(S69°41'58"E	23.47')R3
L7	S53°31'37"E	19.40'
	(S51°18'45"E	19.40')R3
L8	S28°25'38"E	38.29'
	(S26°12'46"E	38.29')R3
L9	S32°14'30"E	48.70'
	(S30°01'38"E	48.70')R3
L10	S22°05'21"E	42.43'
	(S19°52'29"E	42.43')R3
L11	S18°13'49"W	12.48'
	(S20°26'40"W	12.48')R3
L12	S00°37'08"E	30.43'
	(S01°35'45"E	30.43')R3
L13	N00°26'54"E	46.30'
L14	S59°07'25"E	63.96'
L15	S89°52'15"E	46.71'
L23	S28°47'46"W	46.42'
L24	N73°09'26"E	26.90'

LINE	BEARING	LENGTH
L17	N16°50'04"W	15.00'
L18	S73°09'56"W	20.00'
L19	N16°50'04"W	15.00'
L20	S16°50'04"E	15.00'
L21	S73°09'56"W	20.00'
L22	S89°52'15"E	15.76'

CURVE	CHORD BEARING	CHORD LENGTH	RADIUS	CURV LENGTH
C1	N33°55'50"E	23.27'	130.00'	23.3'
C2	N50°50'58"E	88.01'	130.00'	89.2'
C3	N83°31'23"E	22.16'	130.00'	22.1'
C4	N83°44'18"E	108.54'	130.00'	111.9'
C5	N63°44'19"E	58.44'	70.00'	60.2'
C6	S61°50'04"E	21.21'	15.00'	23.1'
C7	S28°08'56"W	21.21'	15.00'	23.1'
C8	N86°27'21"E	52.35'	70.00'	53.6'
C9	N41°46'58"E	6.64'	70.00'	6.6'
C10	N33°55'50"E	12.53'	70.00'	12.8'

AFFIDAVIT OF CORRECTION RECORDED
 9/7/2010 AS CO. CLERK INSTR. NO. 2010-014399; C.S. FILE 65/774 A & B

VOL. 22 PA



LEGEND:

- ⊠ SET 5/8" x 30" IRON ROD w/CAP MARKED "I.E. ENGINEERING" UNLESS OTHERWISE NOTED
- ⊡ SET REFERENCE MONUMENT-5/8" IRON ROD w/CAP MARKED "I.E. ENGINEERING"
- FOUND 5/8" IRON ROD UNLESS OTHERWISE NOTED
- ⊞ FOUND IRON PIPE
- ⊕ FOUND BOLT
- ⊙ CALCULATED POSITION
- (R1) RECORD PER LP 2006-0056
- (R2) RECORD PER LP 2004-0074
- (R3) RECORD PER M150-10

30' WIDE ACCESS AND UTILITY EASEMENT PER INST. NO. A4-6171

FOUND BRASS CAP "ANDRECHT" ELEVATION: 411.26 (NGVD 29) NW CORNER BEARS

1" = 50'