

FOR ASSESSMENT AND TAXATION ONLY

S. W. 1/4, S. E. 1/4, SEC. 16, T. 34 S., R. 1 W., W.M. JACKSON COUNTY
1" = 200'

1/16 COR.

SEE MAP 34 1W 1400

1/16 COR.

LOT 2

LOT 2

WELL LOCATED FROM SOUTH HILLSIDE 1/4 CORNER SECTION 16 ADDITION

615 FE NORTH
195 FE EAST

WELL

9-15

TO EDGWOOD DRIVE

WALNUT LANE

RIVER

ORCHARD GLADE SUB.

PART PLAT P-79-1996

P-39-2007

CORRECTED ADJUSTED APPROX SCALE 1" = 200 FT.

ROGUE

JAMES PLACE

RIVER VIEW ESTATES

1/4 COR. SOUTH

1/16 COR.

SEE MAP 34 1W 21A

CS-12800

SEE COR. LOT 21 IN HILLBROOK

SEE COR. LOT 21 IN HILLBROOK

SEE COR. LOT 21 IN HILLBROOK

SEE COR. LOT 21 IN HILLBROOK

SEE COR. LOT 21 IN HILLBROOK

SEE COR. LOT 21 IN HILLBROOK

SEE COR. LOT 21 IN HILLBROOK

SEE COR. LOT 21 IN HILLBROOK

SEE COR. LOT 21 IN HILLBROOK

SEE COR. LOT 21 IN HILLBROOK

SEE COR. LOT 21 IN HILLBROOK

SEE COR. LOT 21 IN HILLBROOK

SEE COR. LOT 21 IN HILLBROOK

SEE COR. LOT 21 IN HILLBROOK

SEE COR. LOT 21 IN HILLBROOK

SEE COR. LOT 21 IN HILLBROOK

SEE COR. LOT 21 IN HILLBROOK

SEE COR. LOT 21 IN HILLBROOK

SEE COR. LOT 21 IN HILLBROOK

SEE COR. LOT 21 IN HILLBROOK

SEE COR. LOT 21 IN HILLBROOK

SEE COR. LOT 21 IN HILLBROOK

SEE COR. LOT 21 IN HILLBROOK

SEE COR. LOT 21 IN HILLBROOK

SEE COR. LOT 21 IN HILLBROOK

SEE COR. LOT 21 IN HILLBROOK

SEE COR. LOT 21 IN HILLBROOK

SEE COR. LOT 21 IN HILLBROOK

SEE COR. LOT 21 IN HILLBROOK

SEE COR. LOT 21 IN HILLBROOK

SEE COR. LOT 21 IN HILLBROOK

SEE COR. LOT 21 IN HILLBROOK

SEE COR. LOT 21 IN HILLBROOK

SEE COR. LOT 21 IN HILLBROOK

SEE COR. LOT 21 IN HILLBROOK

SEE COR. LOT 21 IN HILLBROOK

SEE COR. LOT 21 IN HILLBROOK

SEE COR. LOT 21 IN HILLBROOK

SEE COR. LOT 21 IN HILLBROOK

SEE COR. LOT 21 IN HILLBROOK

SEE COR. LOT 21 IN HILLBROOK

SEE COR. LOT 21 IN HILLBROOK

SEE COR. LOT 21 IN HILLBROOK

SEE COR. LOT 21 IN HILLBROOK

SEE COR. LOT 21 IN HILLBROOK

SEE COR. LOT 21 IN HILLBROOK

SEE COR. LOT 21 IN HILLBROOK

SEE COR. LOT 21 IN HILLBROOK

SEE COR. LOT 21 IN HILLBROOK

SEE COR. LOT 21 IN HILLBROOK

SEE COR. LOT 21 IN HILLBROOK

SEE COR. LOT 21 IN HILLBROOK

SEE COR. LOT 21 IN HILLBROOK

SEE COR. LOT 21 IN HILLBROOK

SEE COR. LOT 21 IN HILLBROOK

SEE COR. LOT 21 IN HILLBROOK

SEE COR. LOT 21 IN HILLBROOK

SEE COR. LOT 21 IN HILLBROOK

SEE COR. LOT 21 IN HILLBROOK

SEE COR. LOT 21 IN HILLBROOK

SEE COR. LOT 21 IN HILLBROOK

SEE COR. LOT 21 IN HILLBROOK

SEE COR. LOT 21 IN HILLBROOK

SEE COR. LOT 21 IN HILLBROOK

SEE COR. LOT 21 IN HILLBROOK

SEE COR. LOT 21 IN HILLBROOK

SEE COR. LOT 21 IN HILLBROOK

SEE COR. LOT 21 IN HILLBROOK

FOR ASSESSMENT AND TAXATION ONLY

S. W. 1/4, S. E. 1/4, SEC. 16, T. 34 S., R. 1 W., W. M.
JACKSON COUNTY
1" = 200'

1/16 COR.

SHE MAP 34 1W 16D0

1/16 COR.

WELL LOCATED from
SOUTH HILLSIDE 1/4 CORNER
SECTION 16 ADDITION

615 FE NORTH
195 FE EAST

WELL

9-15

ORCHARD

ORCHARD
GLADE
LANE
SUB.

EDGWOOD

WALNUT LANE

RIVER

ROGUE

ROGUE

PART PLAT
P-79-1995

P-29-2007

CORRECTED
ADJUSTED
APPROX
SCALE
1" = 200 FT.

JAMES PLACE

RIVER

VIEW

ESTATES

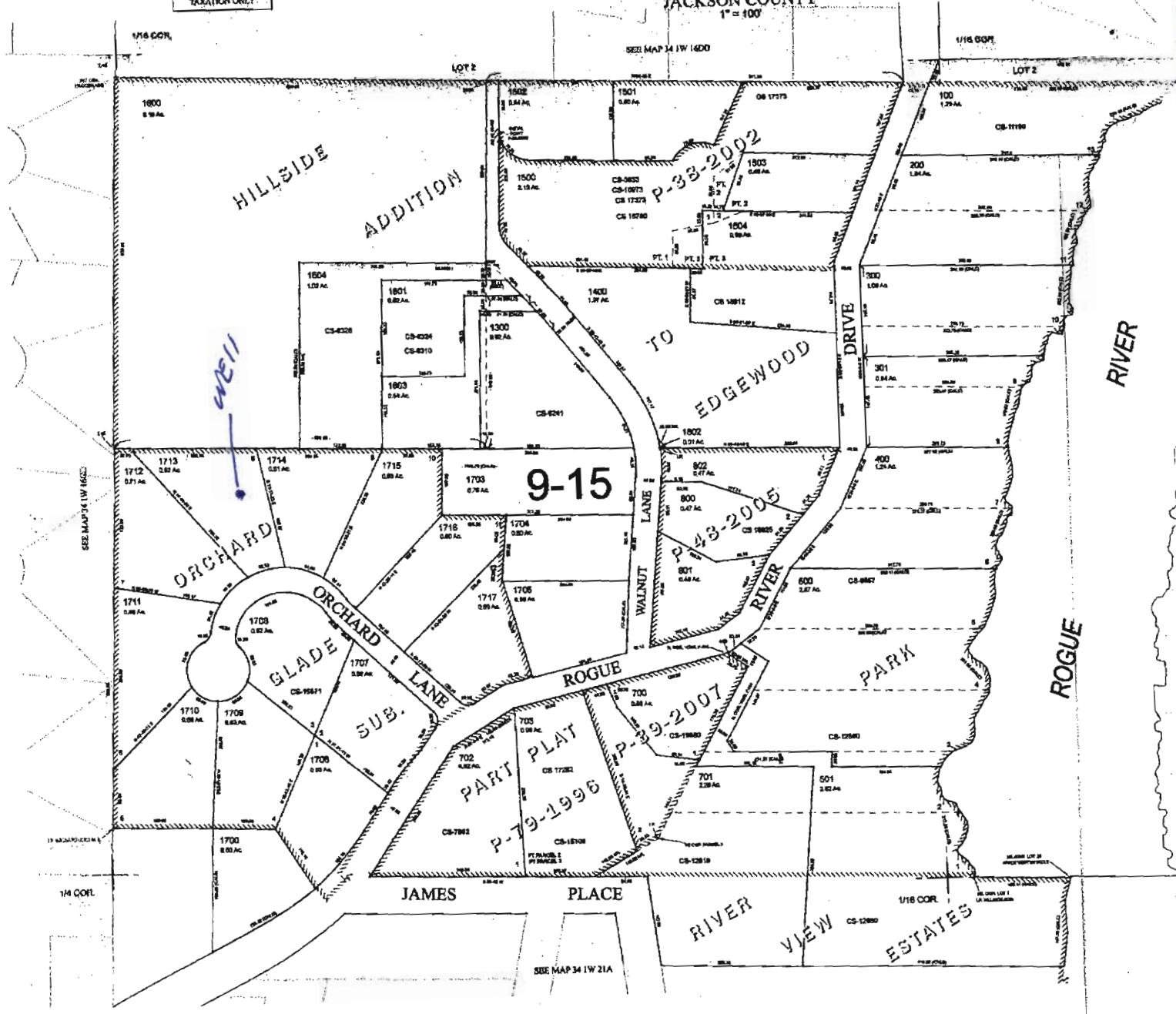
SOUTH

SHE MAP 34 1W 21A

G-17430

FOR ASSIGNMENTS AND TAXATION ONLY

S.W.1/4, S.E.1/4, SEC.16, T.34S., R.1W., W.M.
JACKSON COUNTY
1" = 100'



RECEIVED

OCT 14 2010

WATER RESOURCES DEPT
SALEM, OREGON

RECEIVED

SEP 14 2010

WATER RESOURCES DEPT
SALEM, OREGON

G17430

34-1W-16DC

S.W.1/4, S.E.1/4, SEC.16, T.34S., R.1W., W.M.
JACKSON COUNTY
1" = 100'

34 1W 16DC
SHADY COVE

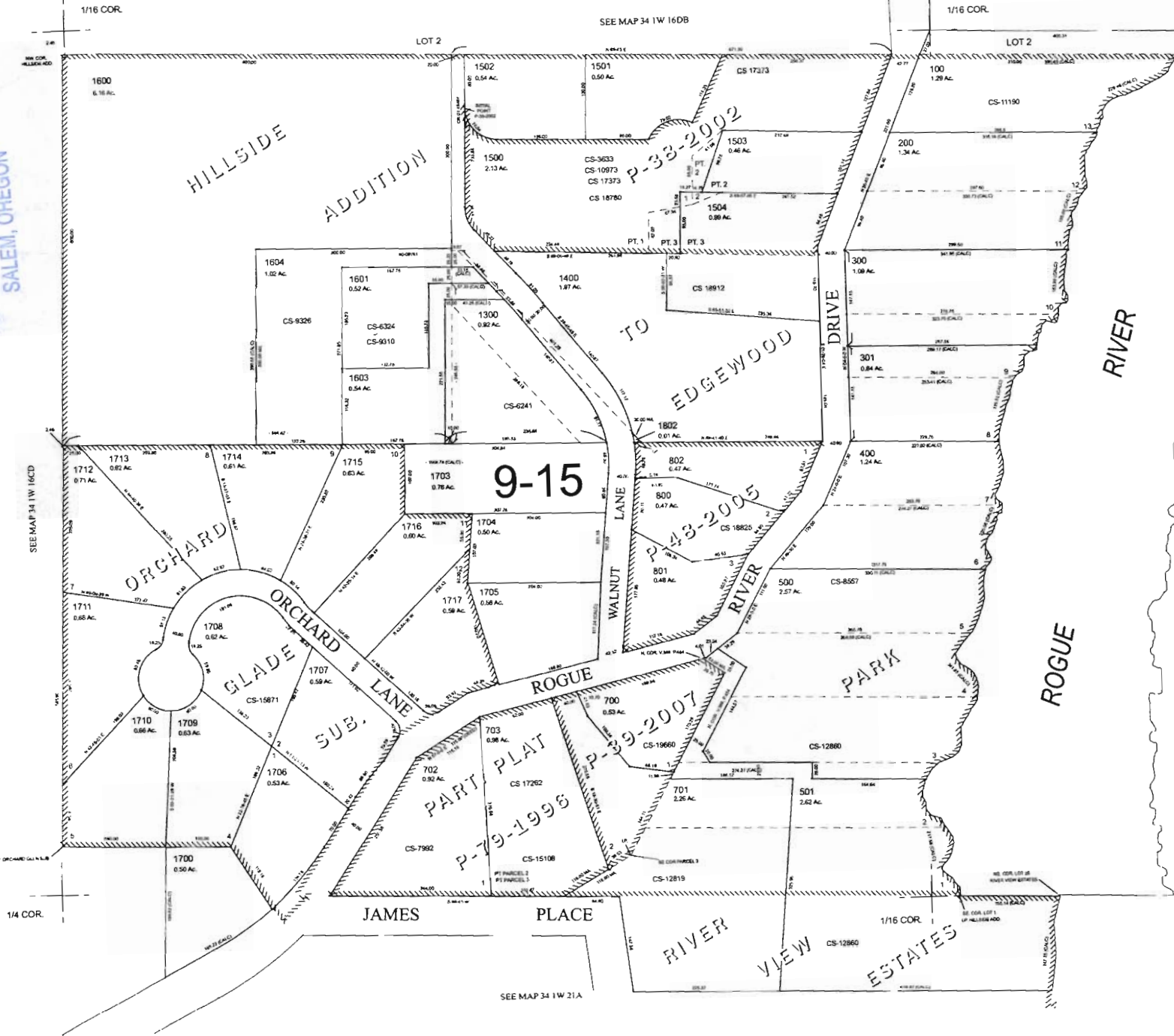
FOR ASSESSMENT AND
TAXATION ONLY

054730

RECEIVED

OCT 14 2010

WATER RESOURCES DEPT
SALEM, OREGON



CANCELLED TAX
LOT NUMBERS:
704

SEE MAP 34 1W 16DD

SEE MAP 34 1W 21A

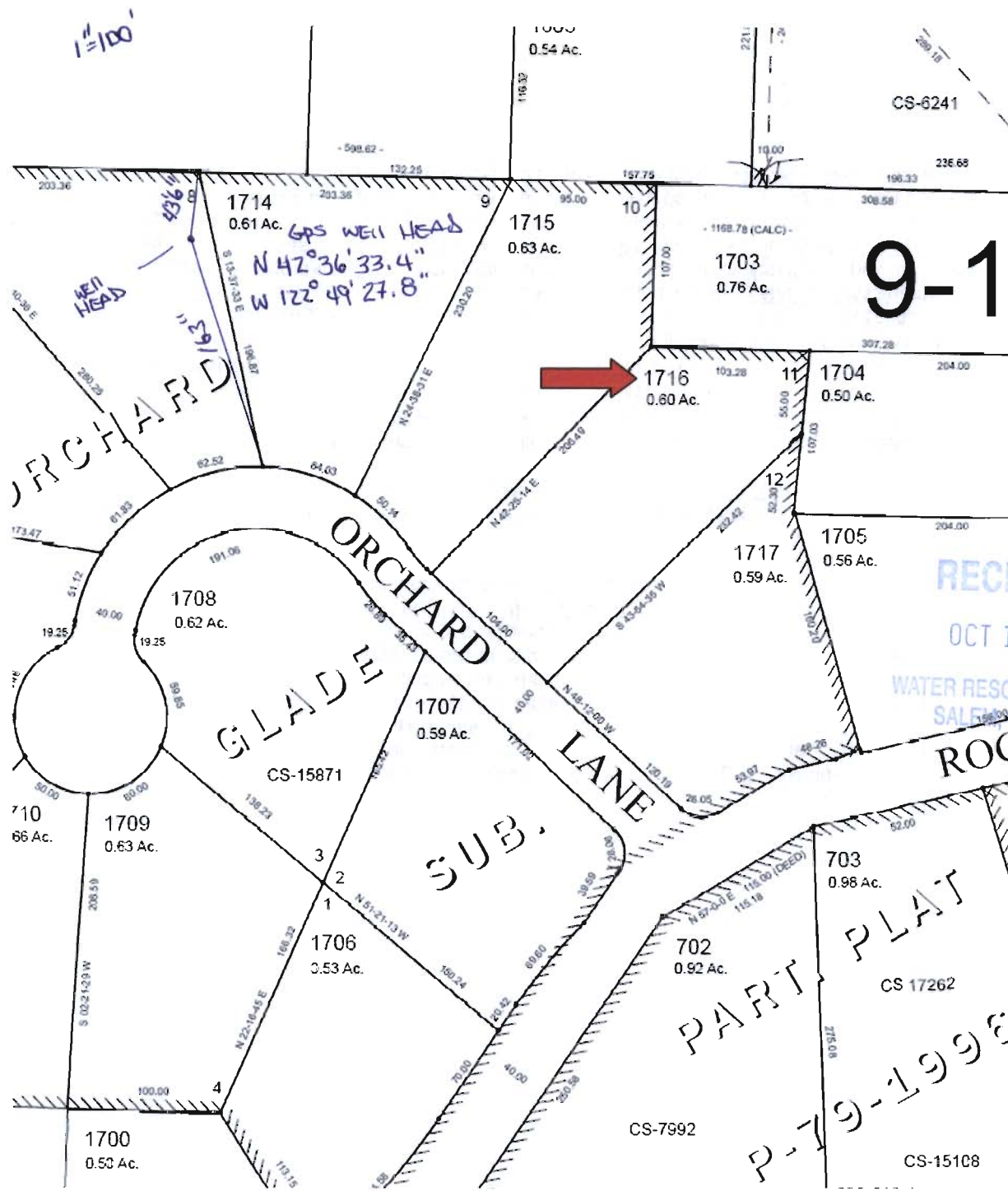
34 1W 16DC
SHADY COVE

NEW MAP JUNE 03, 2009
REV JANUARY 12, 2010

RECEIVED
 SEP 14 2010

ASSESSOR'S MAP: 341W16DC 1716

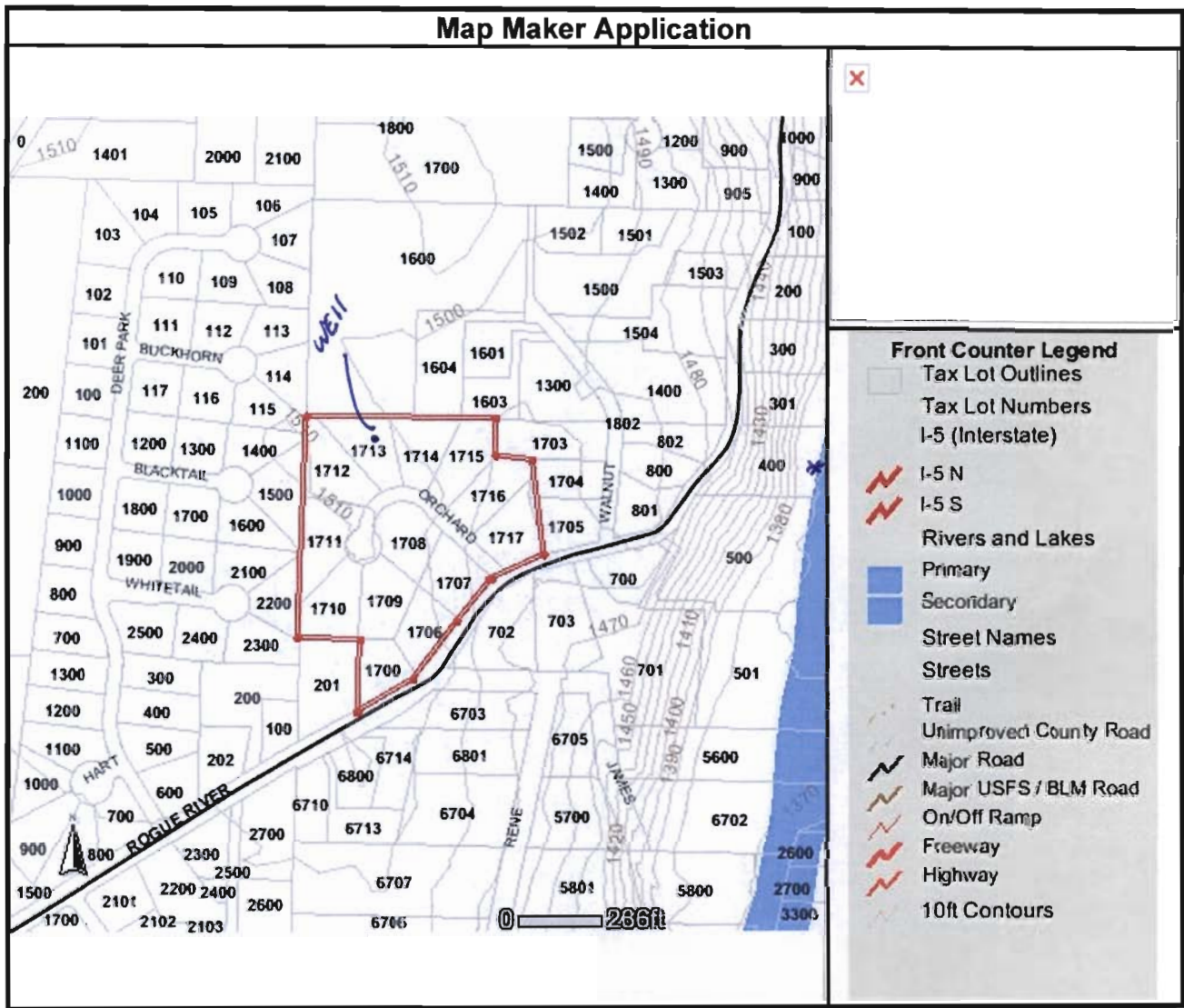
WATER RESOURCES DEPT
 SALEM, OREGON



RECEIVED
 OCT 14 2010
 WATER RESOURCES DEPT
 SALEM, OREGON

This print is made solely for the purpose of assisting in locating the premises, and the Company assumes no liability for information printed on this map, including but not limited to zoning, variations (if any) in area, actual dimensions, and locations as determined by survey.

G-17430



Close Window
Print Window

WELL SITS AT APPROX: 1505 EL
 EDGE OF ROGUE RIVER @ LOT 400 APPROX 1370 EL

RECEIVED

OCT 14 2010

RECEIVED

WATER RESOURCES DEPT
SALEM, OREGON

SEP 14 2010

WATER RESOURCES DEPT
SALEM, OREGON

G17430

G-17430

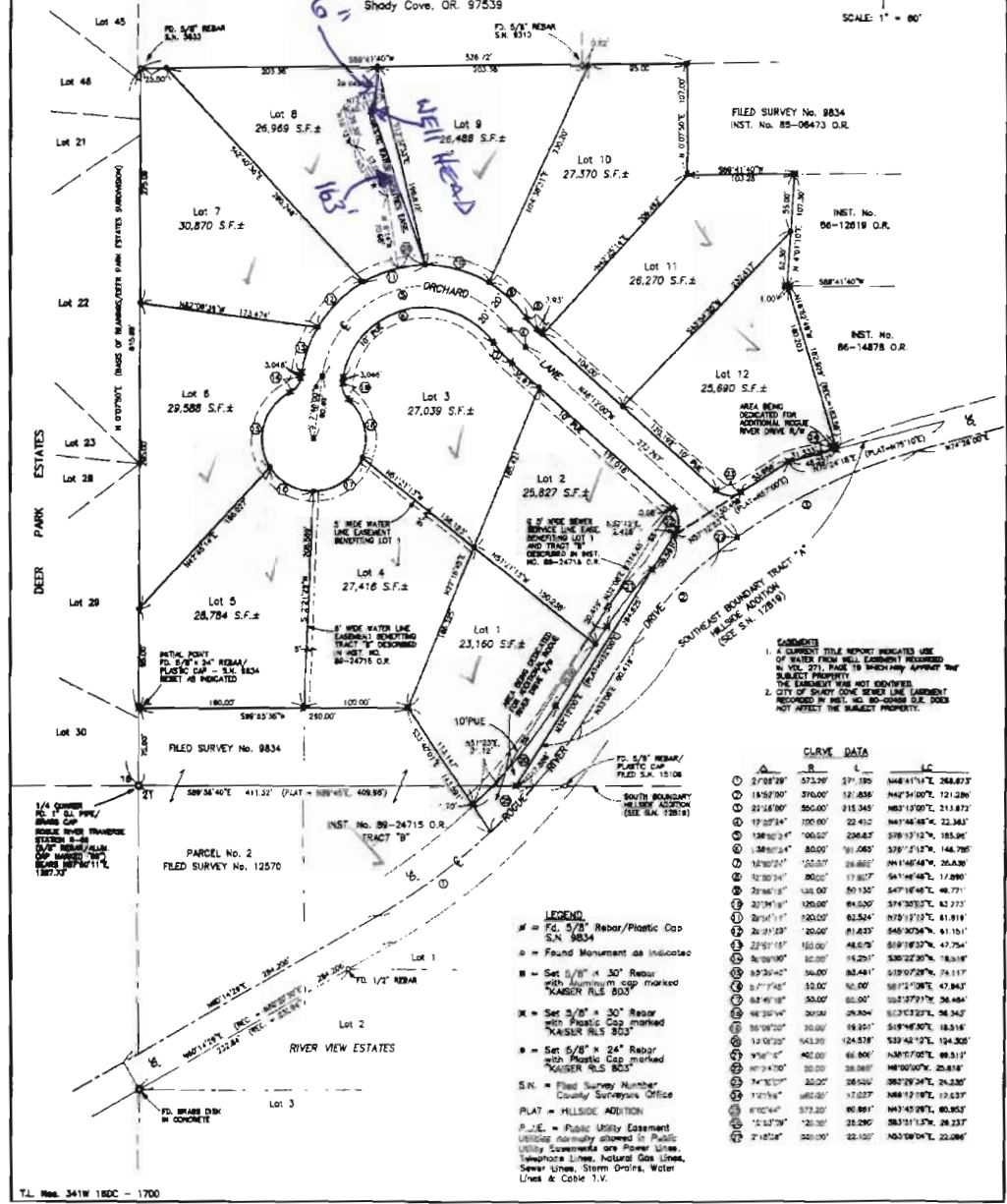
ORCHARD GLADE SUBDIVISION

Located in Tract "A" of HILLSIDE ADDITION TO EDGEWOOD PARK, and in the S.E. 1/4 of Section 18 and the N.E. 1/4 of Section 21, T.34S., R.1W., W.M., City of Shady Cove, Jackson County, Oregon
July 8, 1998

REGISTERED PROFESSIONAL LAND SURVEYOR
S.O.K.
OREGON
NOV 14, 1987
CITY OF SALEM
EX. 8-30-98

SURVEY FOR:
Leonhard Taumann
c/o Ray Johnson
22861 Hwy. 62
Shady Cove, OR. 97539

SURVEY BY:
Kaiser Surveying
19440 Highway 62
Eagle Point, OR. 97524



FILED SURVEY No. 9834
INST. No. 85-06473 O.R.
INST. No. 86-12619 O.R.
INST. No. 86-14878 O.R.

- 1. A CURRENT TITLE REPORT INDICATED USE OF WATER FROM WELL EASEMENT RECORDED IN VOL. 271, PAGE 79 BROADWAY APPROX THE SUBJECT PROPERTY. THE EASEMENT WAS NOT IDENTIFIED.
- 2. CITY OF SHADY COVE WATER LINE EASEMENT RECORDED IN INST. NO. 80-0088 O.R. DOES NOT AFFECT THE SUBJECT PROPERTY.

STATION	Δ	R	L	LC
1	27°08'29"	573.20	571.39	548°41'14"E 268.873
2	18°52'00"	376.00	12.856	342°31'00"E 121.286
3	22°28'00"	555.00	215.345	165°19'00"E 213.872
4	17°02'34"	100.00	22.412	347°48'48"E 22.342
5	126°02'34"	100.00	226.823	378°13'12"E 185.261
6	138°02'34"	80.00	91.065	378°13'12"E 144.785
7	126°02'34"	100.00	226.823	347°48'48"E 22.342
8	12°30'34"	80.00	17.807	347°48'48"E 17.807
9	29°18'18"	148.00	50.135	347°48'48"E 49.771
10	30°31'18"	100.00	64.500	374°30'37"E 62.272
11	29°11'17"	150.00	62.524	378°13'12"E 81.818
12	20°21'23"	120.00	41.232	345°30'34"E 41.101
13	22°01'18"	150.00	48.075	359°18'33"E 47.254
14	08°00'00"	80.00	15.291	332°02'30"E 18.818
15	05°23'42"	90.00	80.481	310°07'29"E 74.117
16	0°17'48"	10.00	10.000	357°12'10"E 47.843
17	04°49'18"	90.00	80.000	357°12'10"E 26.484
18	08°30'34"	20.00	20.000	310°07'29"E 26.342
19	05°02'00"	10.00	10.000	310°07'29"E 18.818
20	12°02'34"	943.00	124.878	339°42'12"E 104.325
21	04°16'18"	482.00	60.806	330°07'07"E 68.517
22	07°34'00"	30.00	30.000	345°00'00"E 25.818
23	74°10'00"	30.00	28.924	282°29'24"E 24.237
24	1°12'34"	482.00	17.037	348°12'18"E 17.037
25	07°02'44"	573.20	80.891	343°45'07"E 80.852
26	12°30'34"	100.00	22.396	347°48'48"E 22.337
27	27°08'29"	573.20	571.39	345°30'34"E 22.897

LEGEND
= File 5/8" Rebar/Plastic Cap S.N. 9834
• = Found Monument as indicated
■ = Set 5/8" x 30" Rebar with Aluminum cap marked 'KAISER RLS 803'
□ = Set 5/8" x 24" Rebar with Plastic Cap marked 'KAISER RLS 803'
• = Set 5/8" x 24" Rebar with Plastic Cap marked 'KAISER RLS 803'
S.N. = Filed Survey Number County Surveyors Office
PLAT = HILLSIDE ADDITION
P.U.E. = Public Utility Easement
Utilities Admittedly Allowed in Public Utility Easements are Power Lines, Telephone Lines, Natural Gas Lines, Sewer Lines, Storm Drains, Water Lines & Cable T.V.

RECEIVED
SEP 14 2010
WATER RESOURCES DEPT
SALEM, OREGON

RECEIVED
OCT 14 2010
WATER RESOURCES DEPT
SALEM, OREGON