



SCALE: 1" = 400'

# CLAIM NO. 123 SETTLEMENT CLAIM MAP

## WALTON IRRIGATED LANDS

### CLAIMANT: TAYLOR HYDE

IRRIGATED LANDS SITUATED IN TOWNSHIP 36 SOUTH, RANGE 12 EAST  
IN THE NE 1/4, SE 1/4 OF SECTION 3 AND NE 1/4 SECTION 10

KLAMATH COUNTY, OREGON

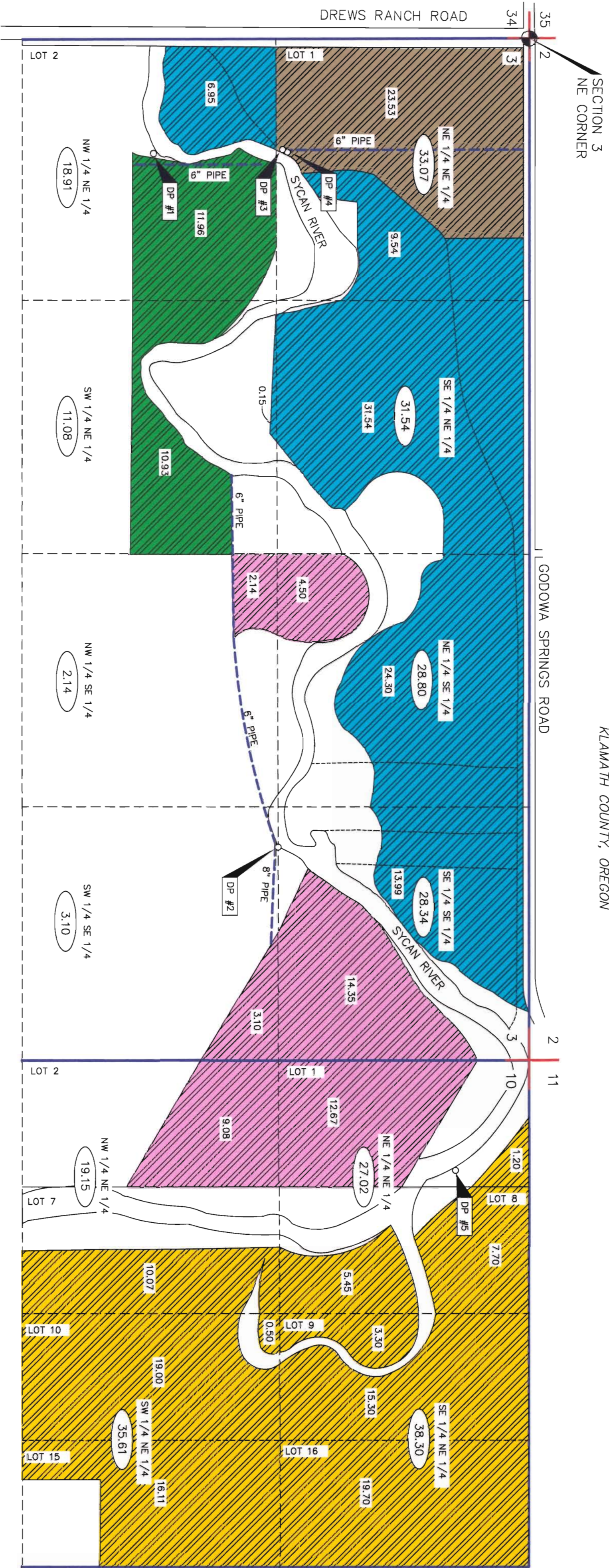


TABLE OF IRRIGATED AREAS SERVED BY DIVERSION POINTS

DP #	AREAS IRRIGATED	GOVERNMENT IRRIGATED LOT #	ACREAGE	SECTION	DP #	AREAS IRRIGATED	GOVERNMENT IRRIGATED LOT #	ACREAGE	SECTION		
DP #1	Green	N/A	11.96	NW 1/4 NE 1/4	3	N/A	1	9.54	NE 1/4 NE 1/4		
										TOTAL	22.89
N/A	4.50	NE 1/4 SE 1/4	3								
				N/A	3.10	SW 1/4 SE 1/4	3				
N/A	14.35	SE 1/4 SE 1/4	3								
				N/A	9.08	NW 1/4 NE 1/4	10				
TOTAL	45.84										
		DP #3	Brown	1	23.53	NE 1/4 NE 1/4	3	TOTAL	98.33		
TOTAL	23.53										

TABLE OF IRRIGATED AREAS BY 1/4 1/4

SECTION	NE 1/4	SE 1/4	SW 1/4	NW 1/4	TOTAL
SEC. 3	33.07	18.91	11.08	31.54	100.60
SEC. 10	27.02	19.15	35.61	38.30	120.08
TOTAL	60.09	38.06	46.69	69.84	214.68

### LEGEND

- 6" PIPE
- EXISTING DITCH
- EXISTING PIPE LINE (SIZE AS NOTED ON PLAN)
- WALTON IRRIGATED LANDS
- DIVERSION POINT
- DP #1
- DP #2
- DP #3
- DP #4
- DP #5
- XX.XX
- XX.XX
- DP
- MONUMENT (NE CORNER SEC. 3)
- TOTAL IRRIGATED ACREAGE PER 1/4 1/4
- IRRIGATED ACREAGE
- DIVERSION POINT
- NOTE: THIS MAP IS NOT INTENDED TO PROVIDE LEGAL DIMENSIONS OR LOCATIONS OF PROPERTY LINES.

### LOCATION OF DIVERSION POINTS

FROM	TO	AREAS IRRIGATED	BEARING	DISTANCE
NE CORNER SECTION 3	DP 1	Green	S73°06'18"W	2048.7'
DP 3 & DP 4 ARE ADJACENT TO EACH OTHER AND THE SAME TO US USED FOR BOTH.)	DP 2	Pink	S17°15'53"W	4397.2'
	DP 3	Blue	S65°47'51"W	1408.7'
	DP 4	Yellow	S65°47'51"W	1408.7'
	DP 5	Yellow	S04°01'20"W	5909.6'



### ADKINS

CONSULTING ENGINEERS, INC.  
Engineers • Planners • Surveyors  
2950 Shasta Way • Klamath Falls, Oregon 97603  
(541) 884-4666 • FAX (541) 884-5335  
COPYRIGHT © 2006

RECEIVED  
DEC 27 2006  
WATER RESOURCES DEPT  
SALEM, OREGON

2348-02

DECEMBER 18, 2006

MDR