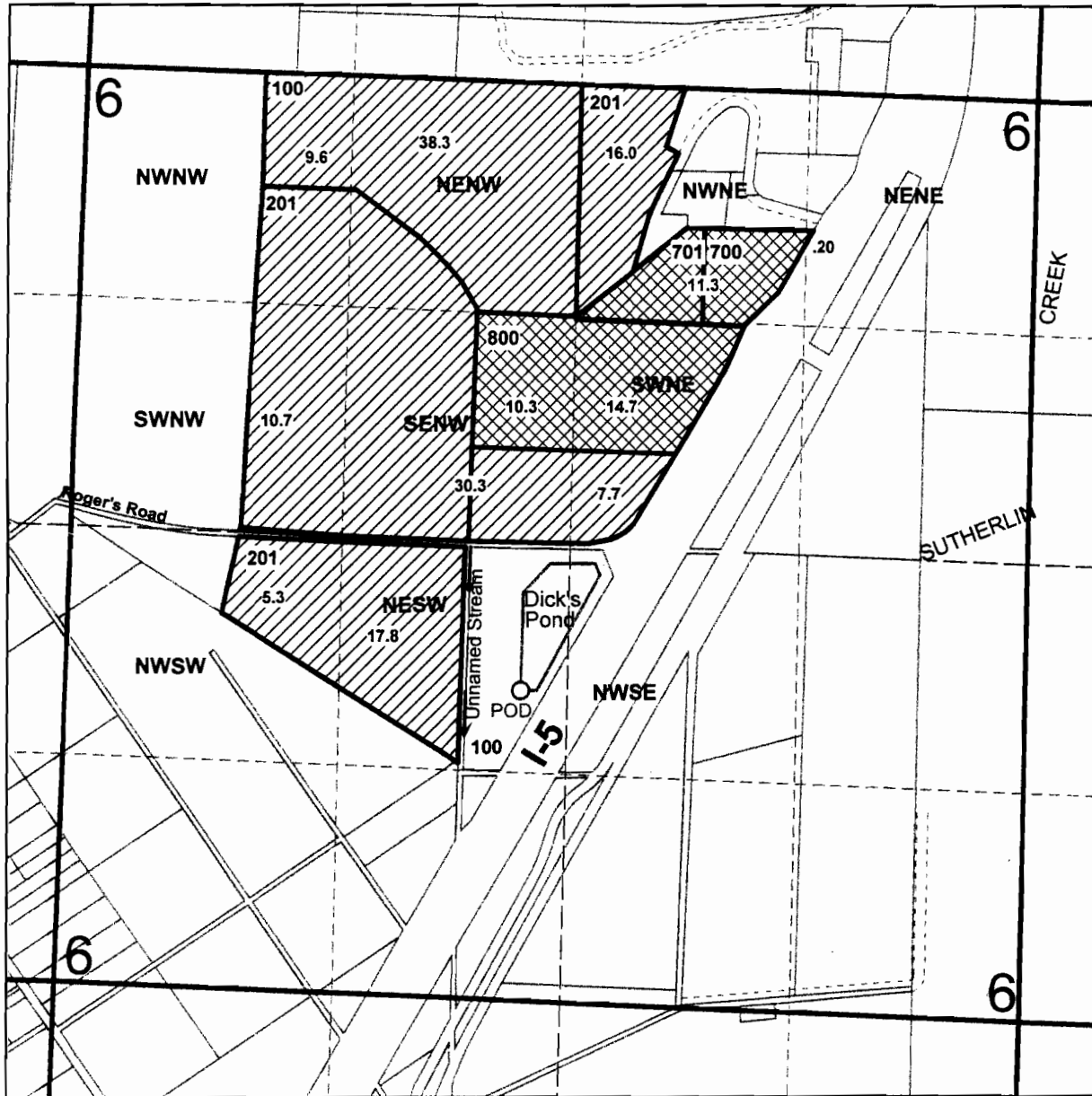




SEC.6 T.26S. R.5W. W.M. DOUGLAS COUNTY

Scale: 1" = 1000'



POD is 835 ft. South and 270 ft. West from the center of Section 6.

Legend

-  36.5 Acres Primary (R-14899)
-  135.7 Acres Supplemental (S-54495)

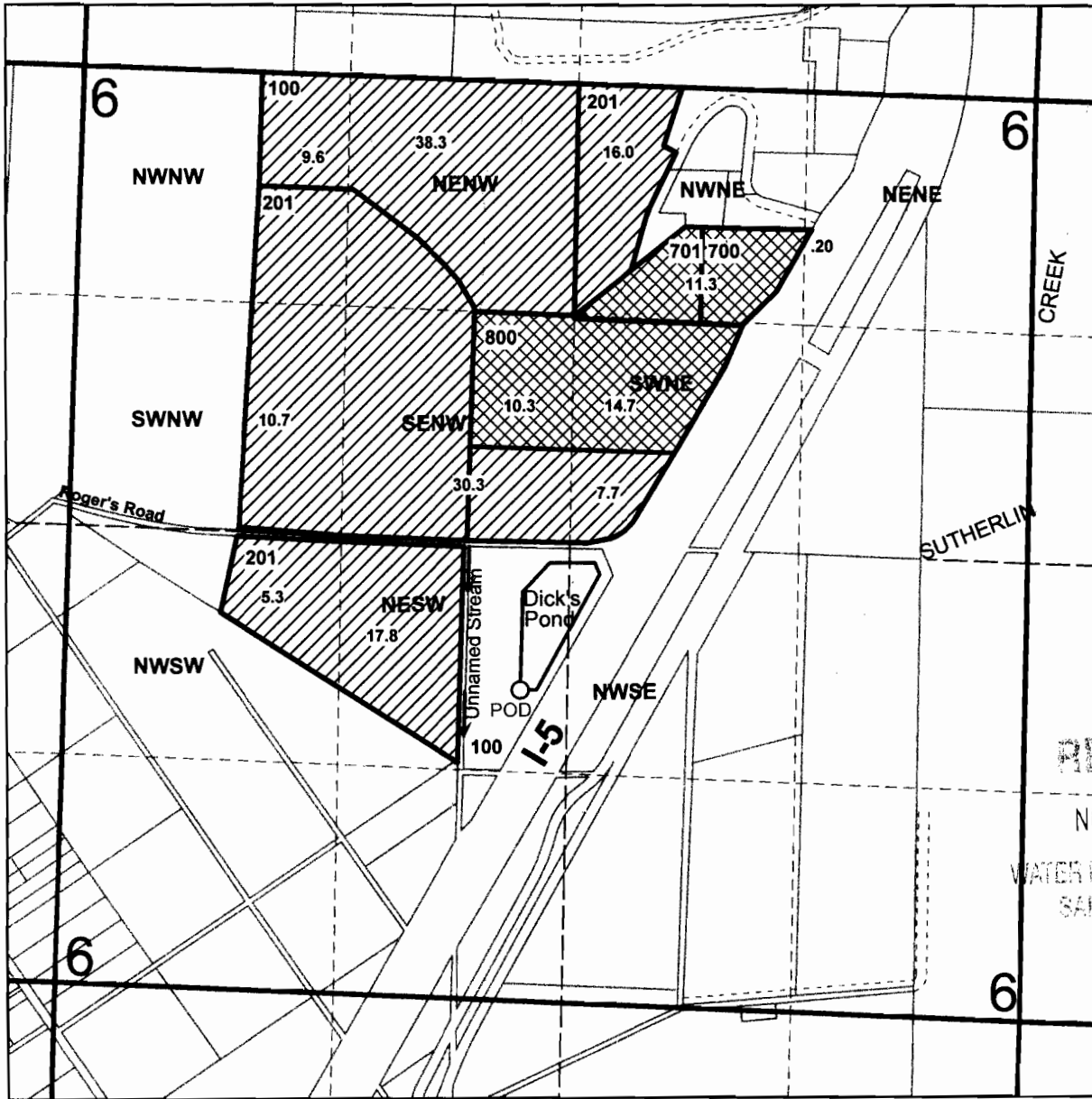
RECEIVED

NOV 02 2010

WATER RESOURCES DEPT
SALEM, OREGON



SEC.6 T.26S. R.5W. W.M. DOUGLAS COUNTY

Scale: 1" = 1000'



POD is 835 ft. South and 270 ft. West from the center of Section 6.

Legend

-  36.5 Acres Primary (R-14899)
-  135.7 Acres Supplemental (S-54495)

S-87662

1/4
COR

THIS MAP WAS PREPARED FOR
ASSESSMENT PURPOSE ONLY.

SW1/4 SEC.6 T.26S. R.5W. W.M.
DOUGLAS COUNTY
1" = 200'

REVISED ON
3-12-08 SEE MAP 26 5 6A

26 5 6C

SEE MAP 26 5 6

ROGERS RD.
14 NW COR
DLC NO 43
100
17.29 AC
CEN
SET

POSEBURG
HOME ORCHARD
TRACTS

PLAT "G"

INTERSTATE
HWY

CANCELLED NO'S

S-87661

SE COR
E. WOTEY
DLC NO 48
NE COR
DLC NO 50

HOME
ORCHARD

4-24

PLAT "D"

4-57

TRACTS

4-57

US

INTERSTATE
HWY

SEE MAP 26 6 1D

SEE M106-4

SEE MAP 26 5 6D

12 400
2.26 AC

500
21.3 AC

600
1.30 AC

300
9.23 AC

700
9.77 AC

702
9.55 AC

14 800
3.8 AC

16 800
3.8 AC

900
3.74 AC

SEE MAP 26 6 12A

SEE MAP 26 5 7B

WATER RESOURCES DEPT
SALEM, OREGON

NOV 02 2010

RECEIVED

1/4
COR

619,000

4,167,000

26 5 6C

THIS MAP WAS PREPARED FOR ASSESSMENT PURPOSE ONLY.

SEC.6 T.26S. R.5W. W.M.
DOUGLAS COUNTY
1" = 400'

REVISED ON
3-18-10

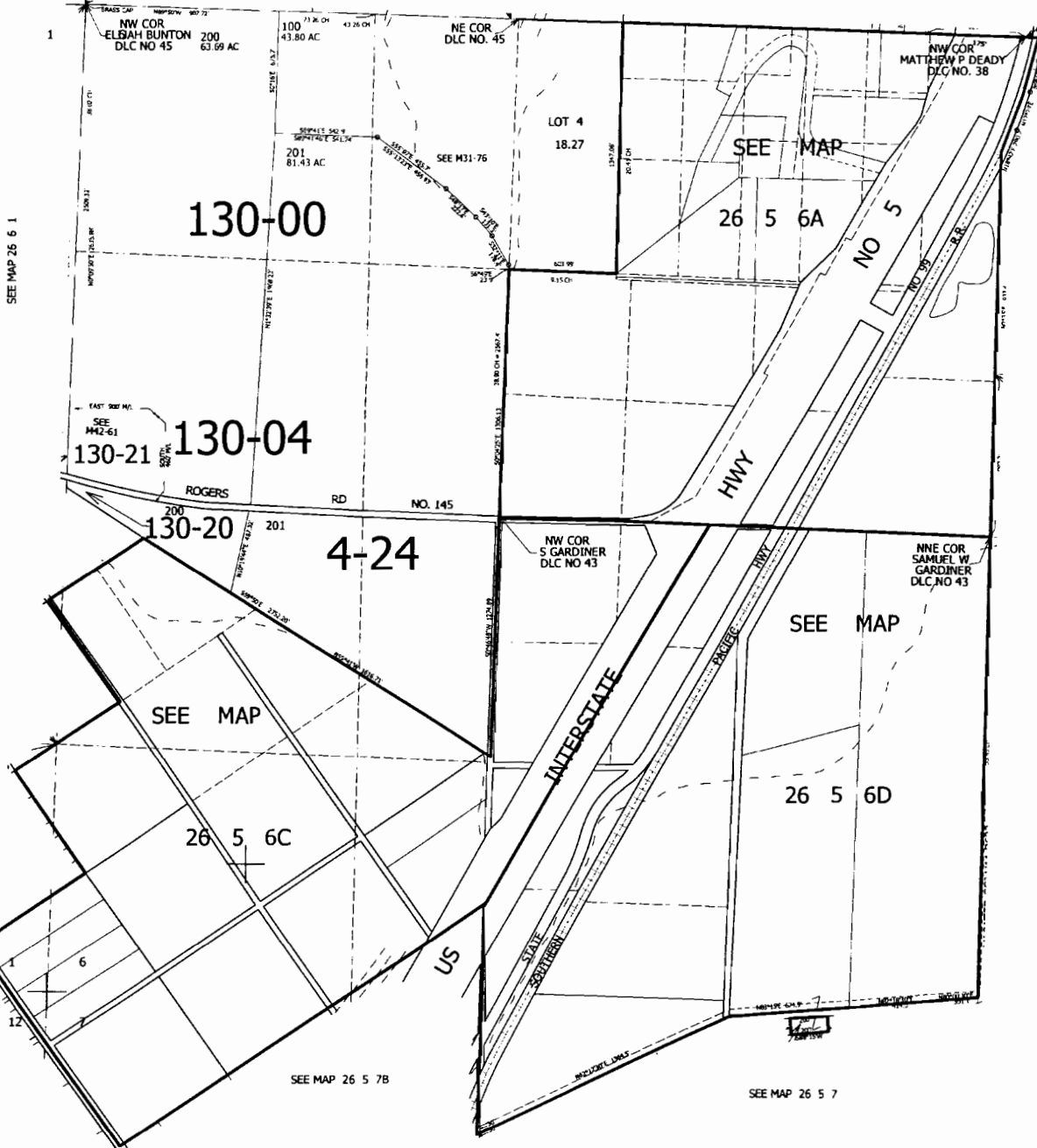
26 5 6
& INDEX

36 31

SEE MAP 25 5 31

31 32
6 5

CANCELLED NOS



SEE MAP 26 5 5

620,000

6 5
7 8

4,170,000

26 5 6
& INDEX

S-2766A

WATER RESOURCES DEPT
SALEM, OREGON

NOV 02 2010

RECEIVED

SEE MAP 26 6 1D

SEE MAP 26 5 7B

SEE MAP 26 5 7

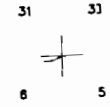
THIS MAP WAS PREPARED FOR
ASSESSMENT PURPOSE ONLY

NEV4 SEC. 6 T.26S. R.5 W W.M.
DOUGLAS COUNTY

REVISED ON
7-9-03

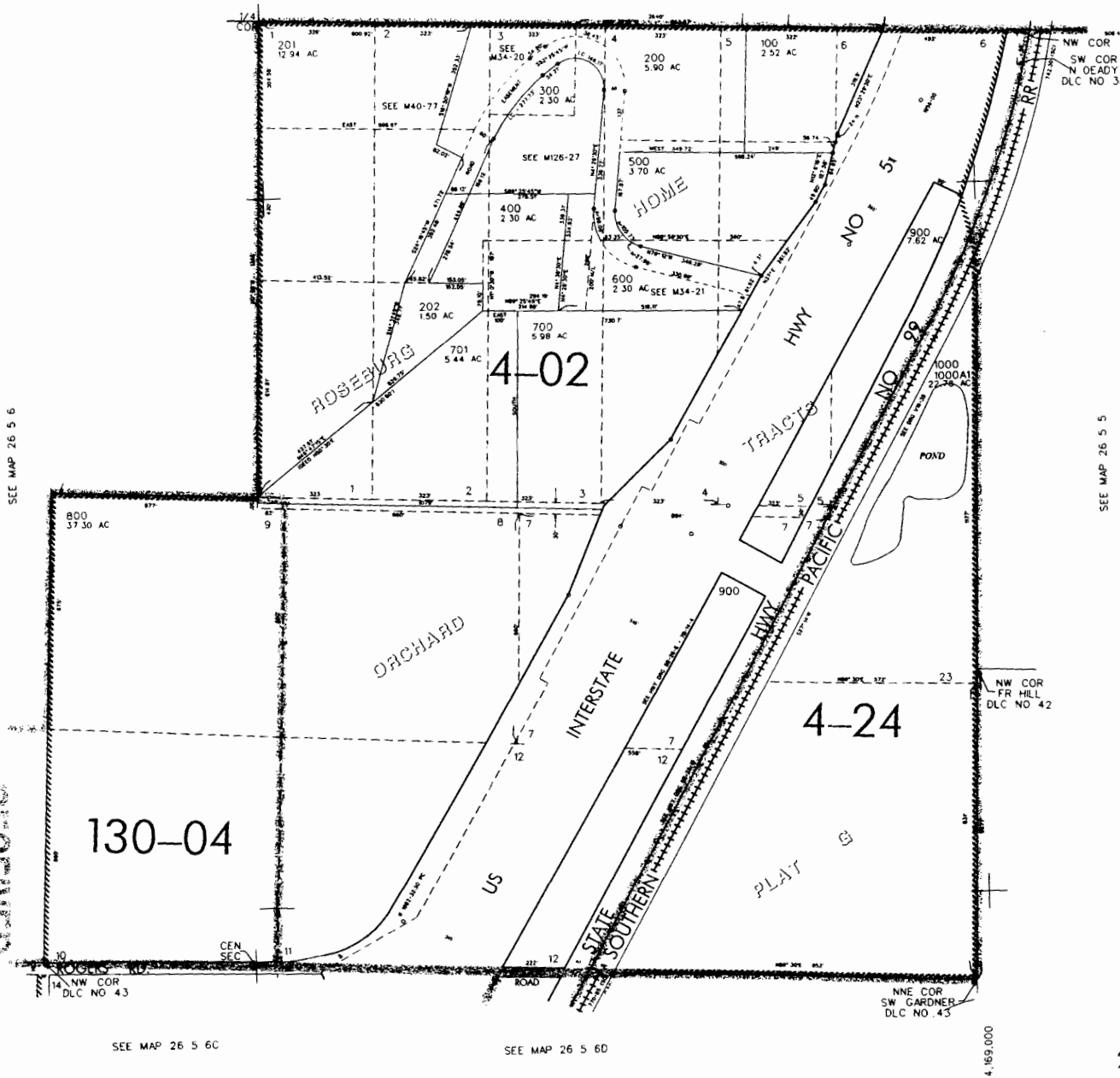
26 5 6A

SEE MAP 25 5 31



CANCELLED NO'S
203 301

S-87662



SEE MAP 26 5 6

SEE MAP 26 5 5

NOV 02 2010

RECEIVED

WATER RESOURCES DEPT
SALEM OREGON

SEE MAP 26 5 6C

SEE MAP 26 5 6D

4,169,000

622,000



26 5 6A