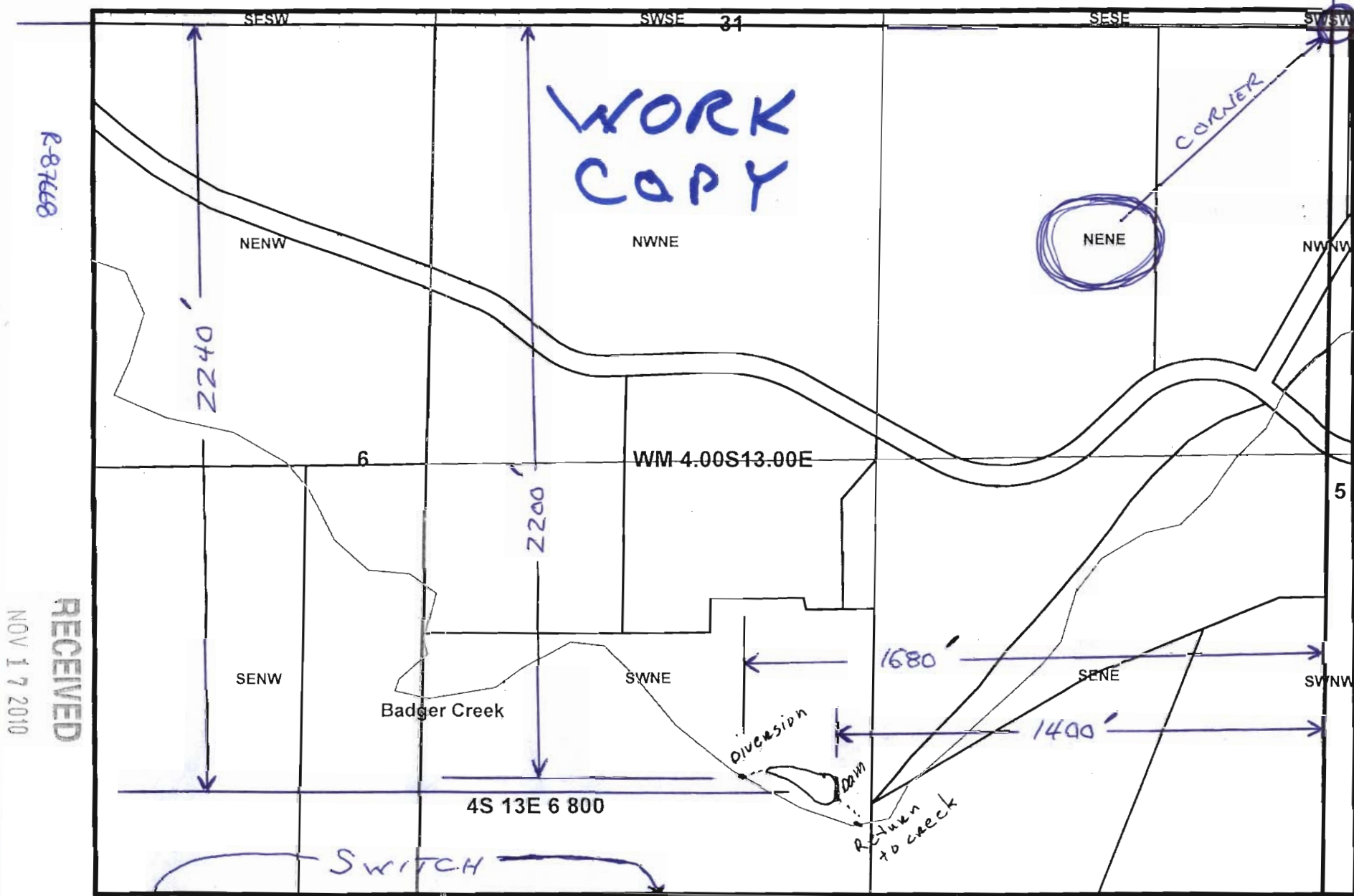
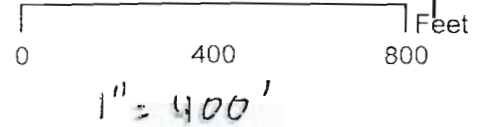
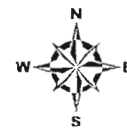


4S 13E Section 6, Tax Lot 800



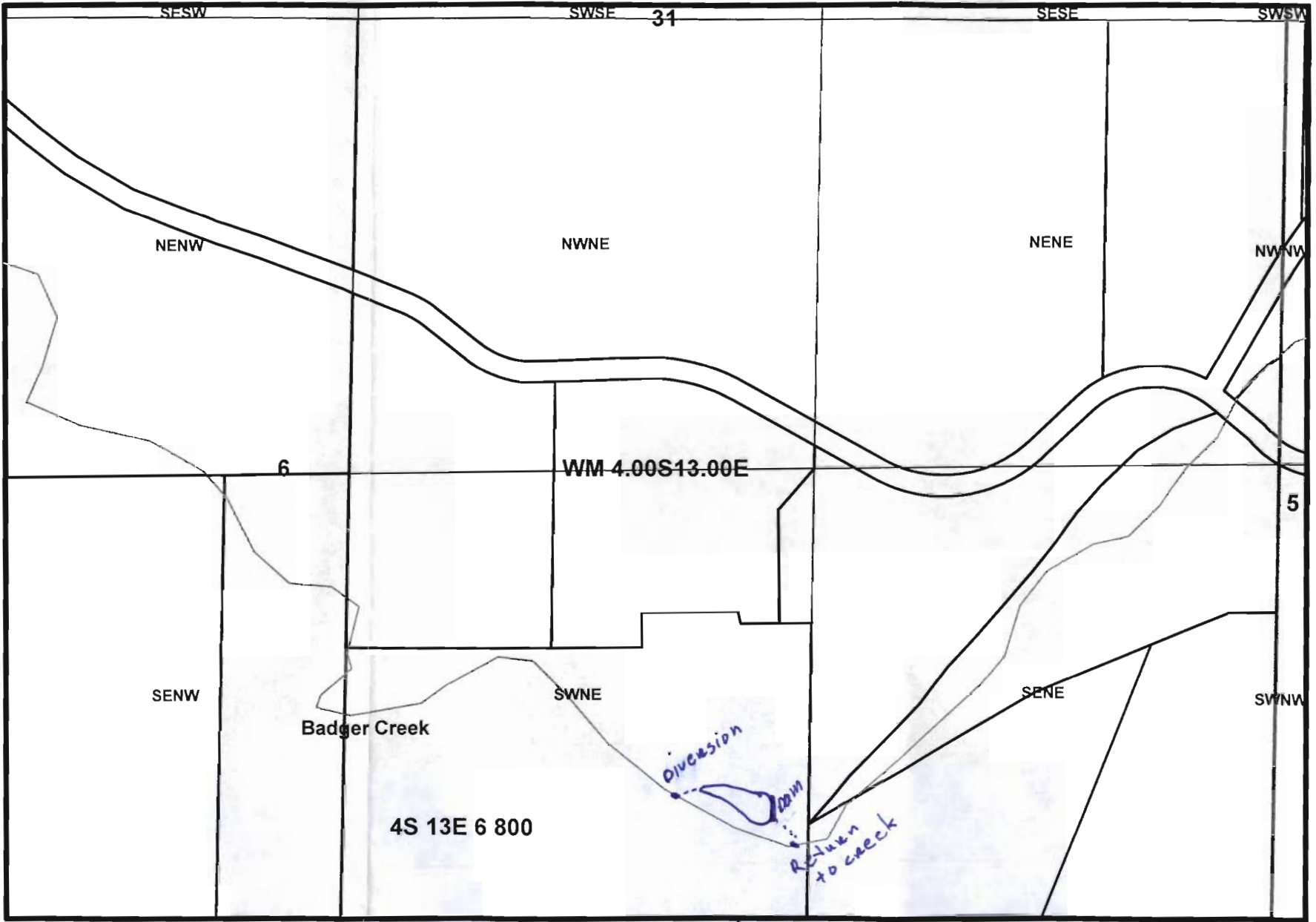
Diversion is approximately 2240' south and 1400' west of NE CORNER, section 6.

Center point of dam is approximately 2200' south and 1680' west of NE CORNER, section 6.



4S 13E Section 6, Tax Lot 800

R-87660



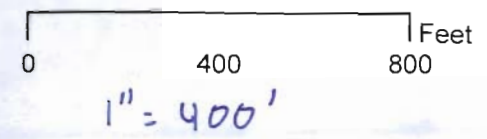
RECEIVED

NOV 17 2010

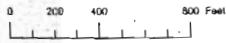
WATER RESOURCES DEPT
SALEM OREGON

Diversion is approximately 2240' south and 1400' west of NE corner, section 6.

center point of dam is approximately 2200' south and 1680' west of NE corner, section 6.

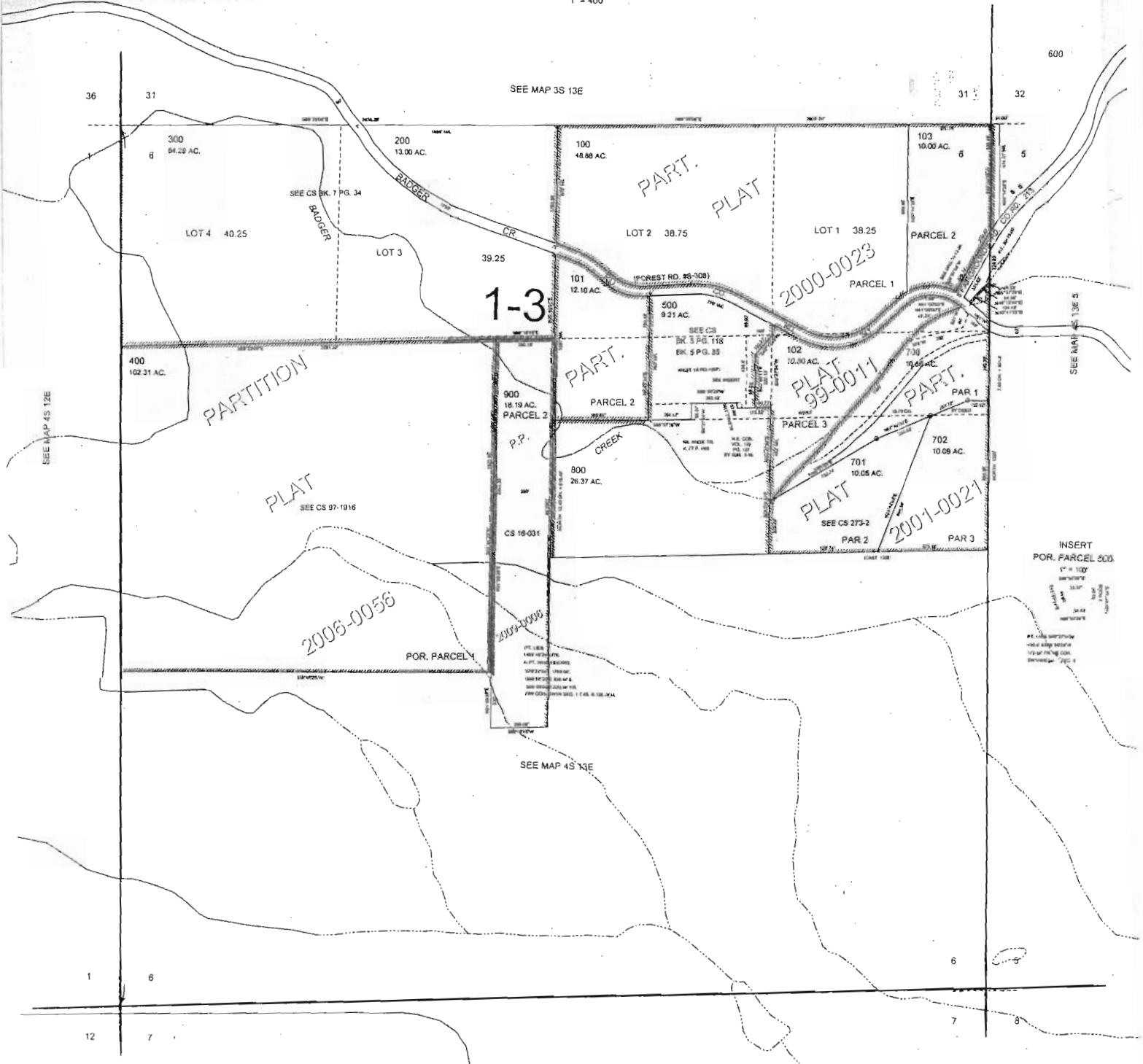


THIS MAP WAS PREPARED FOR ASSESSMENT PURPOSE ONLY



SECTION 6 T.4S. R.13E. W.M.
WASCO COUNTY

1" = 400'



INSERT
POR. PARCEL 500



R-87668