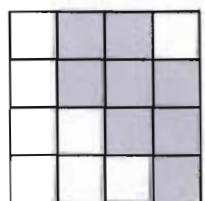


POA located 120' South,
1,065' West of Center Marker
of T24S, R7E, Section 7

Center Marker
T24S, R7E
Section 7



T24S, R7E Section 7

- Corner Marker
- Pipe
- Point of Appropriation
- Proposed Place of Use

Scale 1" = 600'

John A. Short
Water Right Services, LLC
 P.O. Box 1830, Bend, OR 97709
 541-408-7415 johnshort@usa.com
www.oregonwater.us

**Ground Water Application Map for The Diamond Peaks at
 Leisure Woods I & II Homeowners Association, Inc.**

T24S R7E Section 7
 Klamath County, OR - November 23, 2010

RECEIVED

DEC 22 2010

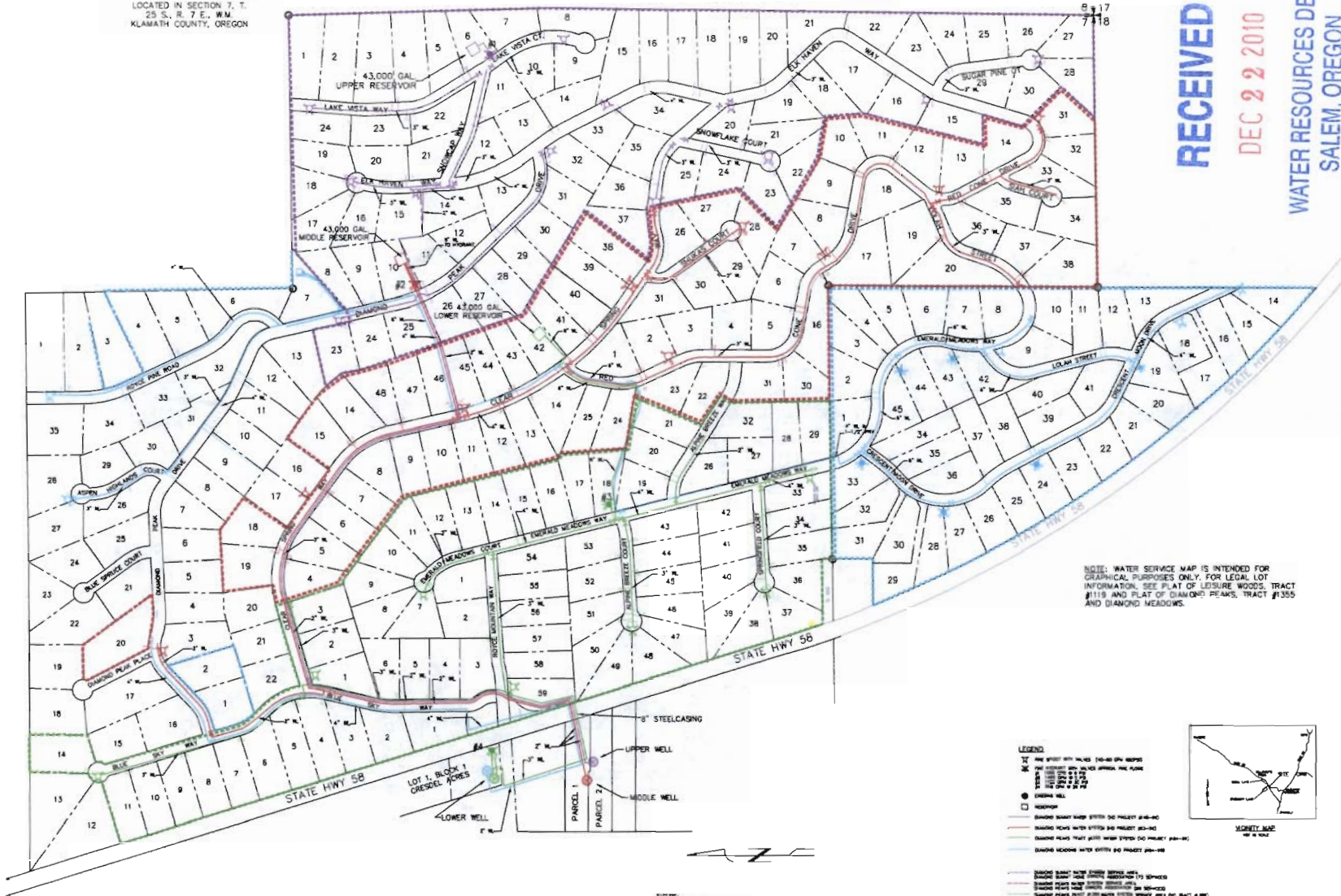
WATER RESOURCES DEPT
 SALEM, OREGON

G-17445

WATER SERVICE MAP

DIAMOND SUMMIT, DIAMOND PEAKS,
DIAMOND PEAKS TR #1355,
AND DIAMOND MEADOWS

LOCATED IN SECTION 7, T.
25 S., R. 7 E., W.M.
KLAMATH COUNTY, OREGON



NOTE: WATER SERVICE MAP IS INTENDED FOR GRAPHICAL PURPOSES ONLY. FOR LEGAL LOT INFORMATION, SEE PLAT OF LEISURE WOODS, TRACT #1119 AND PLAT OF DIAMOND PEAKS, TRACT #1355 AND DIAMOND MEADOWS.

- LEGEND**
- 1" LINE WITH 30" WALLS (10-40 GPM SERVICE)
 - 2" LINE WITH 30" WALLS (40-60 GPM SERVICE)
 - 3" LINE WITH 30" WALLS (60-80 GPM SERVICE)
 - 4" LINE WITH 30" WALLS (80-100 GPM SERVICE)
 - 6" LINE WITH 30" WALLS (100-150 GPM SERVICE)
 - 8" LINE WITH 30" WALLS (150-200 GPM SERVICE)
 - 12" LINE WITH 30" WALLS (200-300 GPM SERVICE)
 - 18" LINE WITH 30" WALLS (300-400 GPM SERVICE)
 - 24" LINE WITH 30" WALLS (400-500 GPM SERVICE)
 - 30" LINE WITH 30" WALLS (500-600 GPM SERVICE)
 - 36" LINE WITH 30" WALLS (600-700 GPM SERVICE)
 - 42" LINE WITH 30" WALLS (700-800 GPM SERVICE)
 - 48" LINE WITH 30" WALLS (800-900 GPM SERVICE)
 - 54" LINE WITH 30" WALLS (900-1000 GPM SERVICE)
 - 60" LINE WITH 30" WALLS (1000-1100 GPM SERVICE)
 - 66" LINE WITH 30" WALLS (1100-1200 GPM SERVICE)
 - 72" LINE WITH 30" WALLS (1200-1300 GPM SERVICE)
 - 78" LINE WITH 30" WALLS (1300-1400 GPM SERVICE)
 - 84" LINE WITH 30" WALLS (1400-1500 GPM SERVICE)
 - 90" LINE WITH 30" WALLS (1500-1600 GPM SERVICE)
 - 96" LINE WITH 30" WALLS (1600-1700 GPM SERVICE)
 - 102" LINE WITH 30" WALLS (1700-1800 GPM SERVICE)
 - 108" LINE WITH 30" WALLS (1800-1900 GPM SERVICE)
 - 114" LINE WITH 30" WALLS (1900-2000 GPM SERVICE)
 - 120" LINE WITH 30" WALLS (2000-2100 GPM SERVICE)
 - 126" LINE WITH 30" WALLS (2100-2200 GPM SERVICE)
 - 132" LINE WITH 30" WALLS (2200-2300 GPM SERVICE)
 - 138" LINE WITH 30" WALLS (2300-2400 GPM SERVICE)
 - 144" LINE WITH 30" WALLS (2400-2500 GPM SERVICE)
 - 150" LINE WITH 30" WALLS (2500-2600 GPM SERVICE)
 - 156" LINE WITH 30" WALLS (2600-2700 GPM SERVICE)
 - 162" LINE WITH 30" WALLS (2700-2800 GPM SERVICE)
 - 168" LINE WITH 30" WALLS (2800-2900 GPM SERVICE)
 - 174" LINE WITH 30" WALLS (2900-3000 GPM SERVICE)
 - 180" LINE WITH 30" WALLS (3000-3100 GPM SERVICE)
 - 186" LINE WITH 30" WALLS (3100-3200 GPM SERVICE)
 - 192" LINE WITH 30" WALLS (3200-3300 GPM SERVICE)
 - 198" LINE WITH 30" WALLS (3300-3400 GPM SERVICE)
 - 204" LINE WITH 30" WALLS (3400-3500 GPM SERVICE)
 - 210" LINE WITH 30" WALLS (3500-3600 GPM SERVICE)
 - 216" LINE WITH 30" WALLS (3600-3700 GPM SERVICE)
 - 222" LINE WITH 30" WALLS (3700-3800 GPM SERVICE)
 - 228" LINE WITH 30" WALLS (3800-3900 GPM SERVICE)
 - 234" LINE WITH 30" WALLS (3900-4000 GPM SERVICE)
 - 240" LINE WITH 30" WALLS (4000-4100 GPM SERVICE)
 - 246" LINE WITH 30" WALLS (4100-4200 GPM SERVICE)
 - 252" LINE WITH 30" WALLS (4200-4300 GPM SERVICE)
 - 258" LINE WITH 30" WALLS (4300-4400 GPM SERVICE)
 - 264" LINE WITH 30" WALLS (4400-4500 GPM SERVICE)
 - 270" LINE WITH 30" WALLS (4500-4600 GPM SERVICE)
 - 276" LINE WITH 30" WALLS (4600-4700 GPM SERVICE)
 - 282" LINE WITH 30" WALLS (4700-4800 GPM SERVICE)
 - 288" LINE WITH 30" WALLS (4800-4900 GPM SERVICE)
 - 294" LINE WITH 30" WALLS (4900-5000 GPM SERVICE)
 - 300" LINE WITH 30" WALLS (5000-5100 GPM SERVICE)
 - 306" LINE WITH 30" WALLS (5100-5200 GPM SERVICE)
 - 312" LINE WITH 30" WALLS (5200-5300 GPM SERVICE)
 - 318" LINE WITH 30" WALLS (5300-5400 GPM SERVICE)
 - 324" LINE WITH 30" WALLS (5400-5500 GPM SERVICE)
 - 330" LINE WITH 30" WALLS (5500-5600 GPM SERVICE)
 - 336" LINE WITH 30" WALLS (5600-5700 GPM SERVICE)
 - 342" LINE WITH 30" WALLS (5700-5800 GPM SERVICE)
 - 348" LINE WITH 30" WALLS (5800-5900 GPM SERVICE)
 - 354" LINE WITH 30" WALLS (5900-6000 GPM SERVICE)
 - 360" LINE WITH 30" WALLS (6000-6100 GPM SERVICE)
 - 366" LINE WITH 30" WALLS (6100-6200 GPM SERVICE)
 - 372" LINE WITH 30" WALLS (6200-6300 GPM SERVICE)
 - 378" LINE WITH 30" WALLS (6300-6400 GPM SERVICE)
 - 384" LINE WITH 30" WALLS (6400-6500 GPM SERVICE)
 - 390" LINE WITH 30" WALLS (6500-6600 GPM SERVICE)
 - 396" LINE WITH 30" WALLS (6600-6700 GPM SERVICE)
 - 402" LINE WITH 30" WALLS (6700-6800 GPM SERVICE)
 - 408" LINE WITH 30" WALLS (6800-6900 GPM SERVICE)
 - 414" LINE WITH 30" WALLS (6900-7000 GPM SERVICE)
 - 420" LINE WITH 30" WALLS (7000-7100 GPM SERVICE)
 - 426" LINE WITH 30" WALLS (7100-7200 GPM SERVICE)
 - 432" LINE WITH 30" WALLS (7200-7300 GPM SERVICE)
 - 438" LINE WITH 30" WALLS (7300-7400 GPM SERVICE)
 - 444" LINE WITH 30" WALLS (7400-7500 GPM SERVICE)
 - 450" LINE WITH 30" WALLS (7500-7600 GPM SERVICE)
 - 456" LINE WITH 30" WALLS (7600-7700 GPM SERVICE)
 - 462" LINE WITH 30" WALLS (7700-7800 GPM SERVICE)
 - 468" LINE WITH 30" WALLS (7800-7900 GPM SERVICE)
 - 474" LINE WITH 30" WALLS (7900-8000 GPM SERVICE)
 - 480" LINE WITH 30" WALLS (8000-8100 GPM SERVICE)
 - 486" LINE WITH 30" WALLS (8100-8200 GPM SERVICE)
 - 492" LINE WITH 30" WALLS (8200-8300 GPM SERVICE)
 - 498" LINE WITH 30" WALLS (8300-8400 GPM SERVICE)
 - 504" LINE WITH 30" WALLS (8400-8500 GPM SERVICE)
 - 510" LINE WITH 30" WALLS (8500-8600 GPM SERVICE)
 - 516" LINE WITH 30" WALLS (8600-8700 GPM SERVICE)
 - 522" LINE WITH 30" WALLS (8700-8800 GPM SERVICE)
 - 528" LINE WITH 30" WALLS (8800-8900 GPM SERVICE)
 - 534" LINE WITH 30" WALLS (8900-9000 GPM SERVICE)
 - 540" LINE WITH 30" WALLS (9000-9100 GPM SERVICE)
 - 546" LINE WITH 30" WALLS (9100-9200 GPM SERVICE)
 - 552" LINE WITH 30" WALLS (9200-9300 GPM SERVICE)
 - 558" LINE WITH 30" WALLS (9300-9400 GPM SERVICE)
 - 564" LINE WITH 30" WALLS (9400-9500 GPM SERVICE)
 - 570" LINE WITH 30" WALLS (9500-9600 GPM SERVICE)
 - 576" LINE WITH 30" WALLS (9600-9700 GPM SERVICE)
 - 582" LINE WITH 30" WALLS (9700-9800 GPM SERVICE)
 - 588" LINE WITH 30" WALLS (9800-9900 GPM SERVICE)
 - 594" LINE WITH 30" WALLS (9900-10000 GPM SERVICE)



NOTE: FOR FURTHER SYSTEM DETAILS SEE POST CONSTRUCTION DRAWINGS AND AS-BUILTS. OTHER DRY UTILITIES MAY BE IN SAME TRENCH AS WATERLINE—CALL FOR LOCATES PRIOR TO DIGGING.

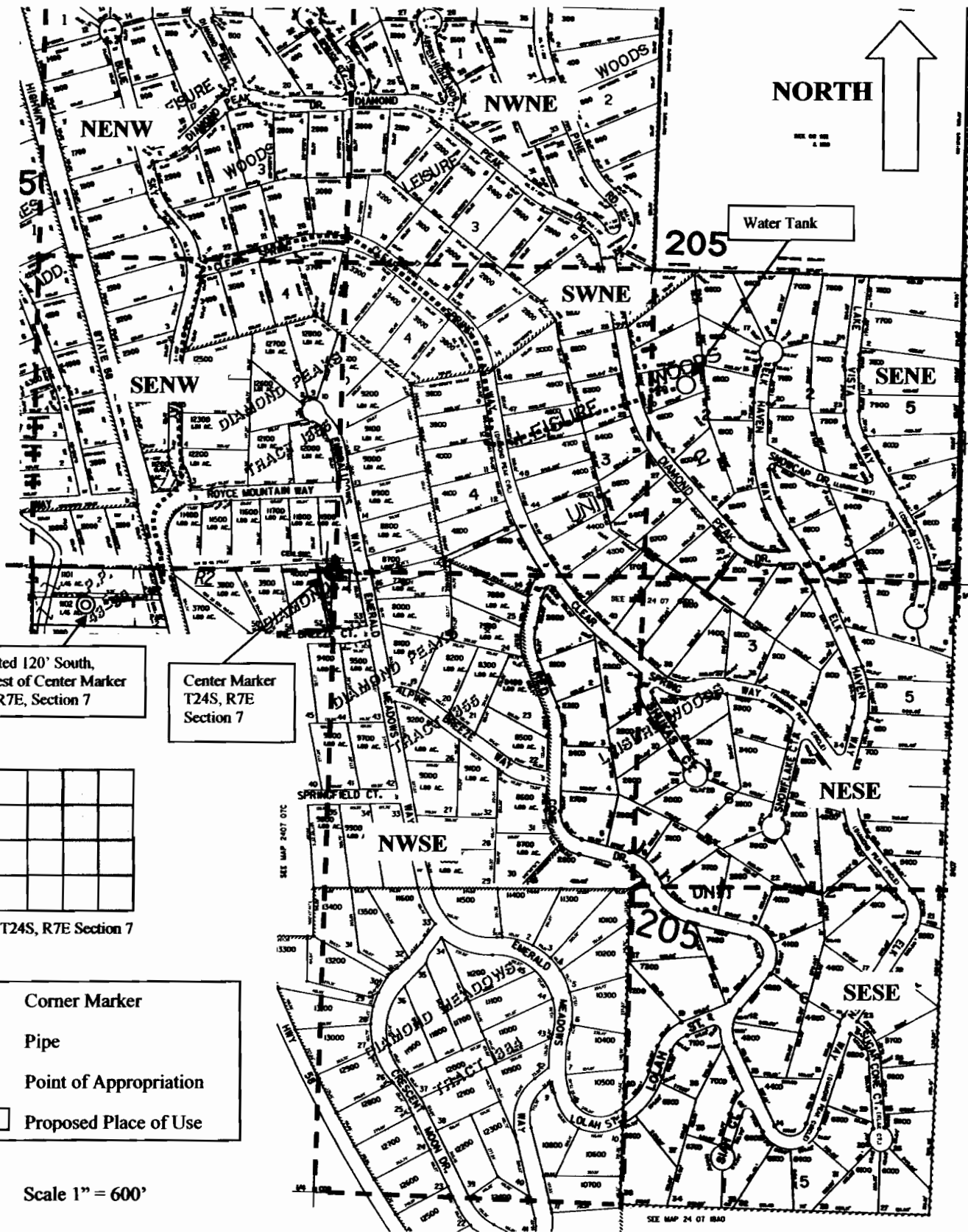
RECEIVED
DEC 2 2010
WATER RESOURCES DEPT
SALEM, OREGON

TYE ENGINEERING, INC.
726 NW HILL - BEND, OREGON 97701 - (541) 338-9669

DIAMOND SUMMIT, DIAMOND PEAKS,
DIAMOND PEAKS TRACT #1355,
AND DIAMOND MEADOWS
WATER SERVICE MAP

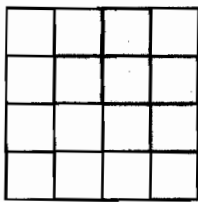
AMERICAN CASH EQUITIES
1470 NE 1ST ST., STE. 100
BEND, OREGON 97701

G-17445



POA located 120' South,
1,065' West of Center Marker
of T24S, R7E, Section 7

Center Marker
T24S, R7E
Section 7



T24S, R7E Section 7

- Corner Marker
- Pipe
- Point of Appropriation
- Proposed Place of Use

Scale 1" = 600'

John A. Short
Water Right Services, LLC
 P.O. Box 1830, Bend, OR 97709
 541-408-7415 johnshort@usa.com
 www.oregonwater.us

**Ground Water Application Map for The Diamond Peaks at
 Leisure Woods I & II Homeowners Association, Inc.**

T24S R7E Section 7
 Klamath County, OR - November 23, 2010

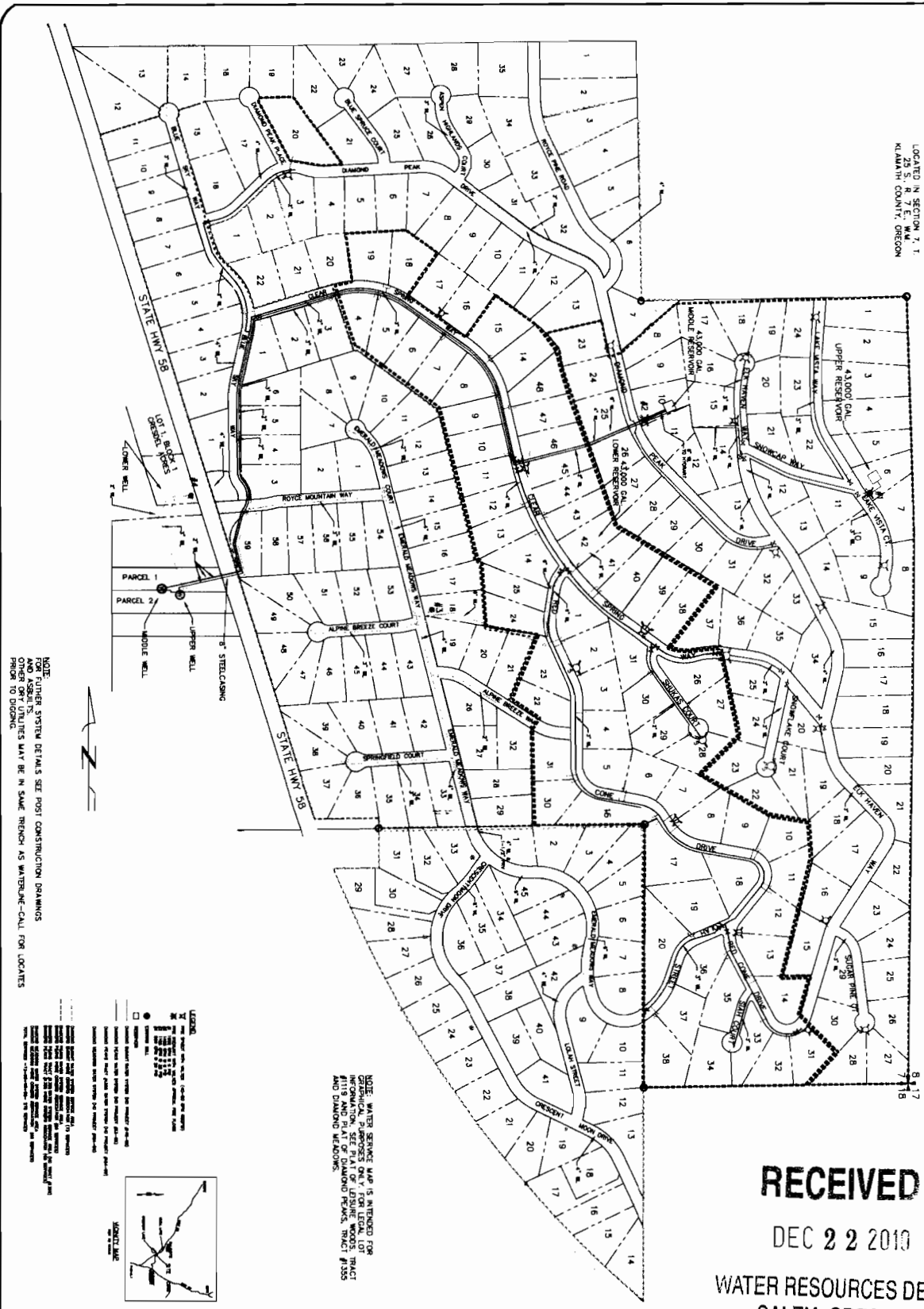
RECEIVED

DEC 22 2010

WATER RESOURCES DEPT
 SALEM, OREGON

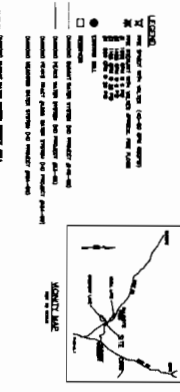
G-17445

WATER SERVICE MAP
 DIAMOND SUMMIT, DIAMOND PEAKS,
 DIAMOND PEAKS TRACT #1355,
 AND DIAMOND MEADOWS
 LOCATED IN SECTION 7, T.
 23 S., R. 7 E., M. 4
 WASHINGTON COUNTY, OREGON



NOTE: WATER SERVICE MAP IS INTENDED FOR
 GENERAL INFORMATION ONLY. FOR LEGAL LOT
 INFORMATION, REFER TO THE DEEDS, TRACT
 AND DIAMOND MEADOWS.

NOTE: WATER SERVICE MAP IS INTENDED FOR
 GENERAL INFORMATION ONLY. FOR LEGAL LOT
 INFORMATION, REFER TO THE DEEDS, TRACT
 AND DIAMOND MEADOWS.



RECEIVED
 DEC 22 2010
 WATER RESOURCES DEPT
 SALEM, OREGON

AMERICAN CASH EQUITIES
 1470 NE 1ST ST., STE. 100
 BEND, OREGON 97701

DIAMOND SUMMIT, DIAMOND PEAKS,
 DIAMOND PEAKS TRACT #1355,
 AND DIAMOND MEADOWS
 WATER SERVICE MAP

TYE ENGINEERING, INC.
 726 NW HILL - BEND, OREGON 97701 - (541) 386-0000

SCALE: 1" = 50' DATE: OCT. 26, 2009 DRAWN: JTT JOB #: 008

0-17445