

**Herb Mosgar**

---

**From:** Dan Boyden [dboyden@gorge.net]  
**Sent:** Tuesday, December 28, 2010 10:13 PM  
**To:** Herb Mosgar  
**Subject:** Ground Water Right application G17446

**Attachments:** Irrigated Acres 001.JPG

Herb,

Here is a map of the irrigated areas in Tax Lots 200, 1200 and 2200. In addition, all of Tax Lot 322 in the NW ¼ of the NW ¼ of section 12 will be irrigated.

All of these areas are primary irrigation – I will not need irrigation for the areas already under irrigation.

The total irrigated acreage is as follows:

Tax Lot 200;	15.6 ac
Tax Lot 1200	24.8 ac
Tax Lot 2200	3.2 ac
Tax lot 322	<u>8.4 ac</u>
Total	52.0 ac

Let me know if this makes the application clear.

Thanks for your help with this,

Dan Boyden

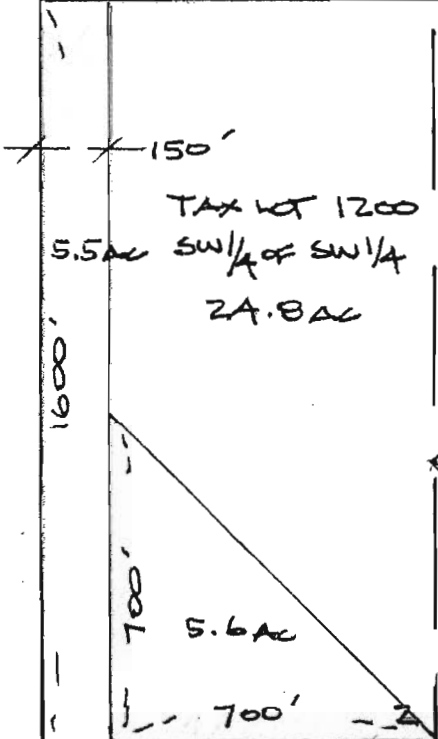
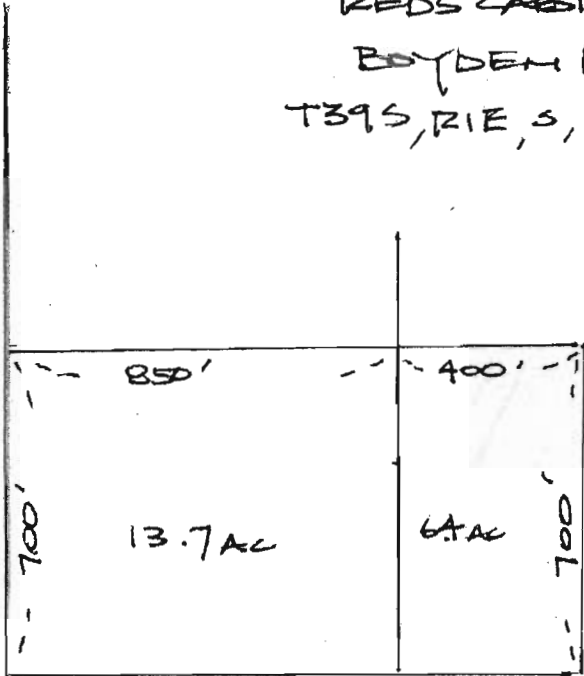
**RECEIVED**

**DEC 29 2010**

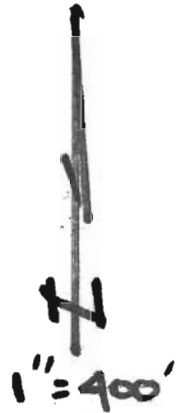
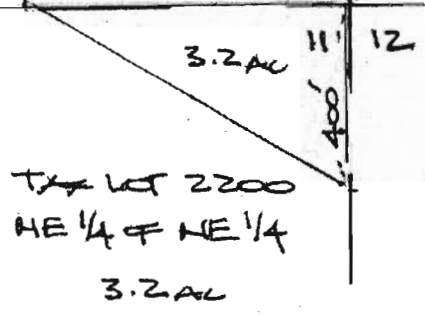
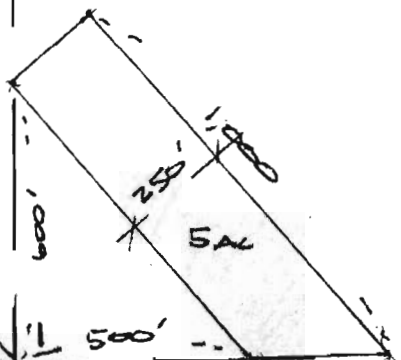
WATER RESOURCES DEPT  
SALEM, OREGON

IRRIGATED AREA  
REDS CABIN, LLC  
BOYDEN RANCH  
T39S, R1E, S, 12, 11, 12

RECEIVED  
DEC 29 2010  
WATER RESOURCES DEPT  
SALEM, OREGON



TAX LOT 200  
SE 1/4 of SE 1/4  
15.6 AC





T395 R1E

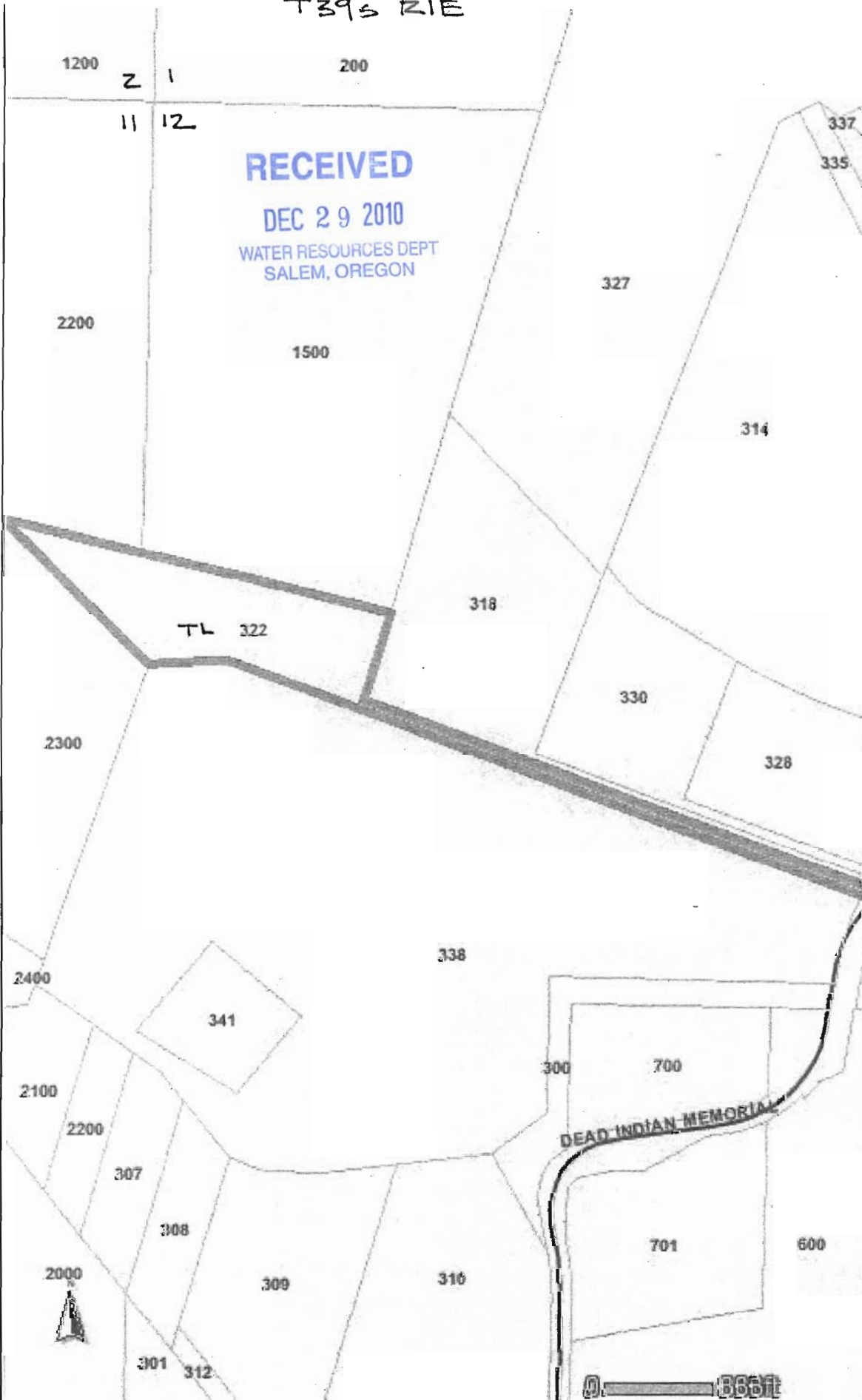
JACKSON COUNTY

INFORMATION TECHNOLOGY

Map Maker Application

- Front Counter Legend
-  Highlighted Feature
  -  Tax Lot Outlines
  - Tax Lot Numbers

**RECEIVED**  
 DEC 29 2010  
 WATER RESOURCES DEPT  
 SALEM, OREGON



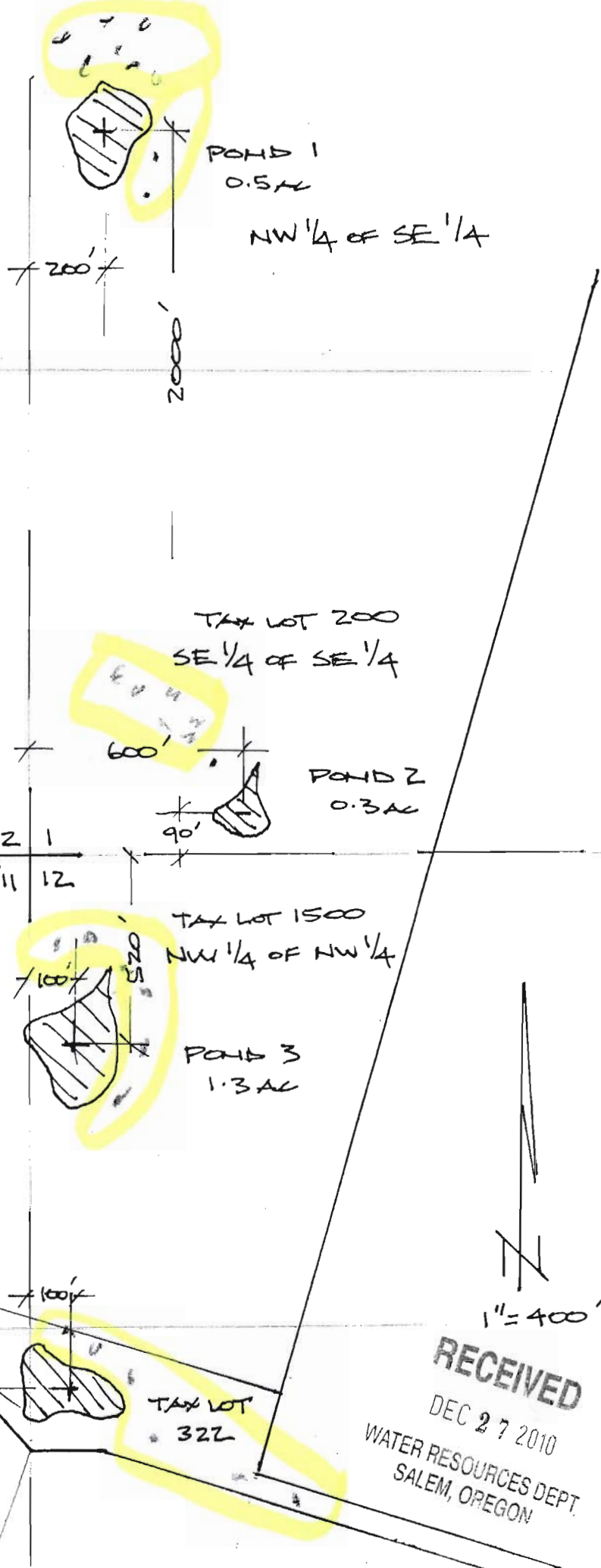
1" = 400'



This map is based on a digital database compiled by Jackson County from a variety of sources. Jackson County cannot accept responsibility for errors, omissions, or positional accuracy. There are no warranties, expressed or implied.

POND LOCATION  
REDS CABIN, LLC  
BOYDEN RANCH  
T39S, R1E, S 1, 2, 11, 12

WORK  
COPY



TAX LOT 1200  
SW 1/4 of SW 1/4

TAX LOT 200  
SE 1/4 of SE 1/4

TAX LOT 2200  
NE 1/4 of NE 1/4

TAX LOT 1500  
NW 1/4 of NW 1/4

DRIP  
IRRIGATION  
OF TREES  
& SHRUBS  
(0.5 AC IN EACH)  
1/4 1/4

RECEIVED  
DEC 27 2010  
WATER RESOURCES DEPT.  
SALEM, OREGON

POND LOCATION  
 REDS CABIN, LLC  
 BOYDEN RANCH  
 T39S, R1E, S 1, 2, 11, 12



POND 1  
 0.5 AC  
 NW 1/4 of SE 1/4

200'

2000'

TAX LOT 1200  
 SW 1/4 of SW 1/4

TAX LOT 200  
 SE 1/4 of SE 1/4

600'



POND 2  
 0.3 AC

2 1  
 11 12

TAX LOT 2200  
 NE 1/4 of NE 1/4

TAX LOT 1500  
 NW 1/4 of NW 1/4



POND 3  
 1.3 AC

1500'

DRIP  
 IRRIGATION  
 OF TREES  
 & SHRUBS  
 (0.5 AC IN EACH)  
 1/4 1/4

100'



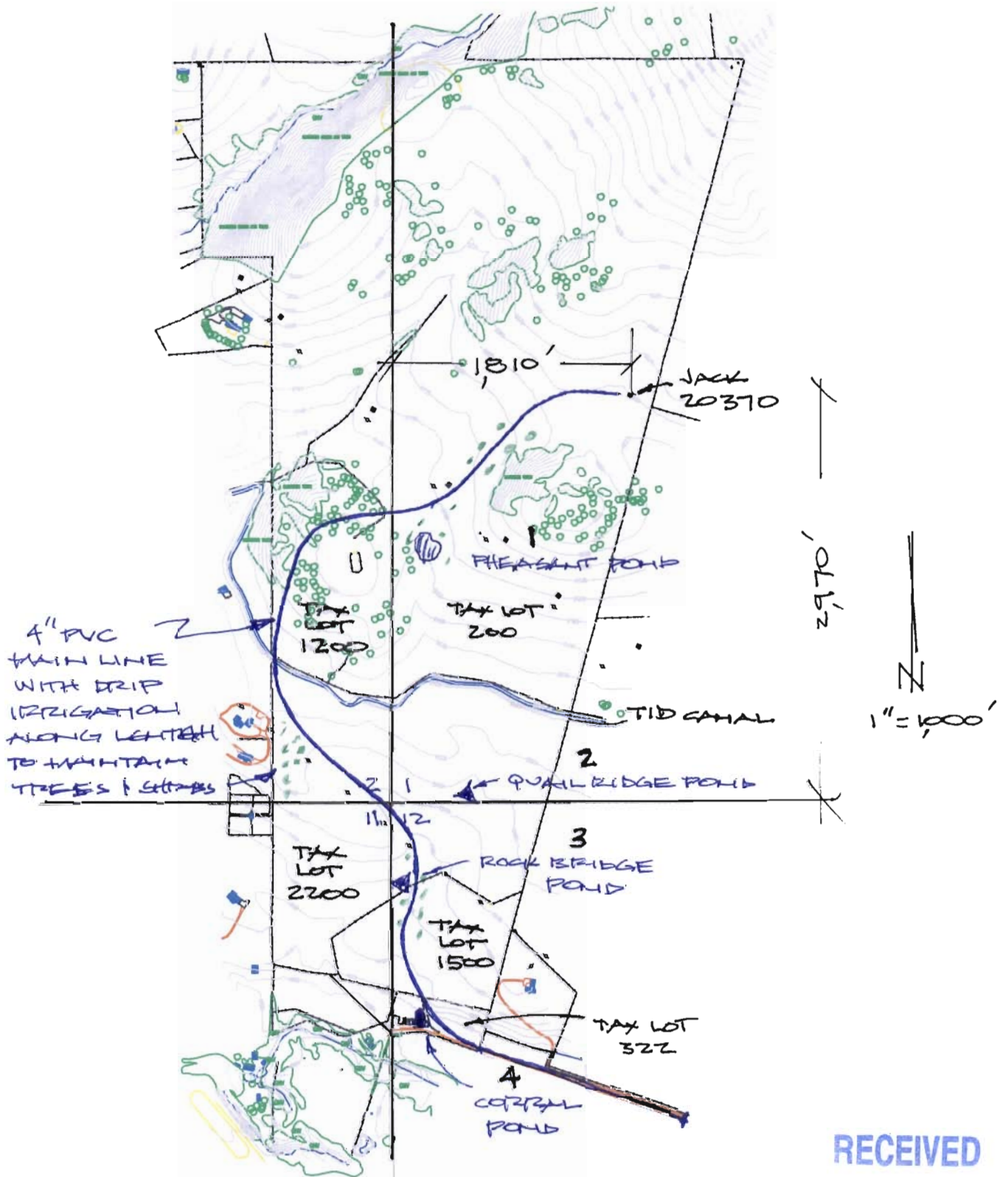
POND 4  
 0.5 AC

TAX LOT  
 322



RECEIVED  
 DEC 27 2010  
 WATER RESOURCES DEPT  
 SALEM, OREGON

REDS CABIN LLC  
BOYDEN  
T39S, R1E, SECTIONS 1, 2, 11 + 12



RECEIVED

DEC 27 2010

WATER RESOURCES DEPT  
SALEM, OREGON