

S.W.1/4 S.W.1/4 SEC.21 T.17S. R.2W. W.M.  
Lane County

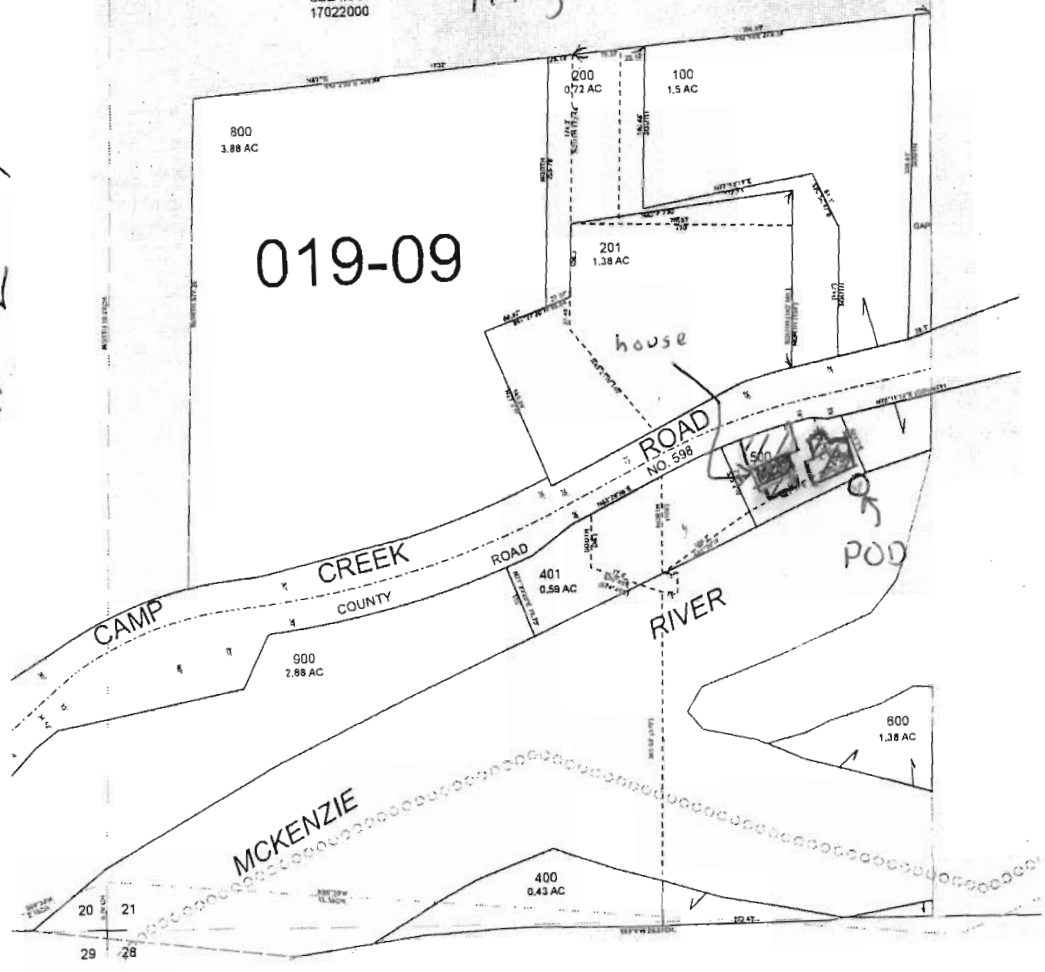
1" = 200'

TAX LOT 500

POD is 450' N & 785' W from SW  
corner section 21

SEE MAP  
17022000

LOT 5 38.25  
Irrigation 0.1 acre



**RECEIVED**  
DEC 29 2010  
WATER RESOURCES DEPT  
SALEM, OREGON