

T17S, R3W Section 24

3³ ac in SE, NW

4⁷ ac in NE, SW

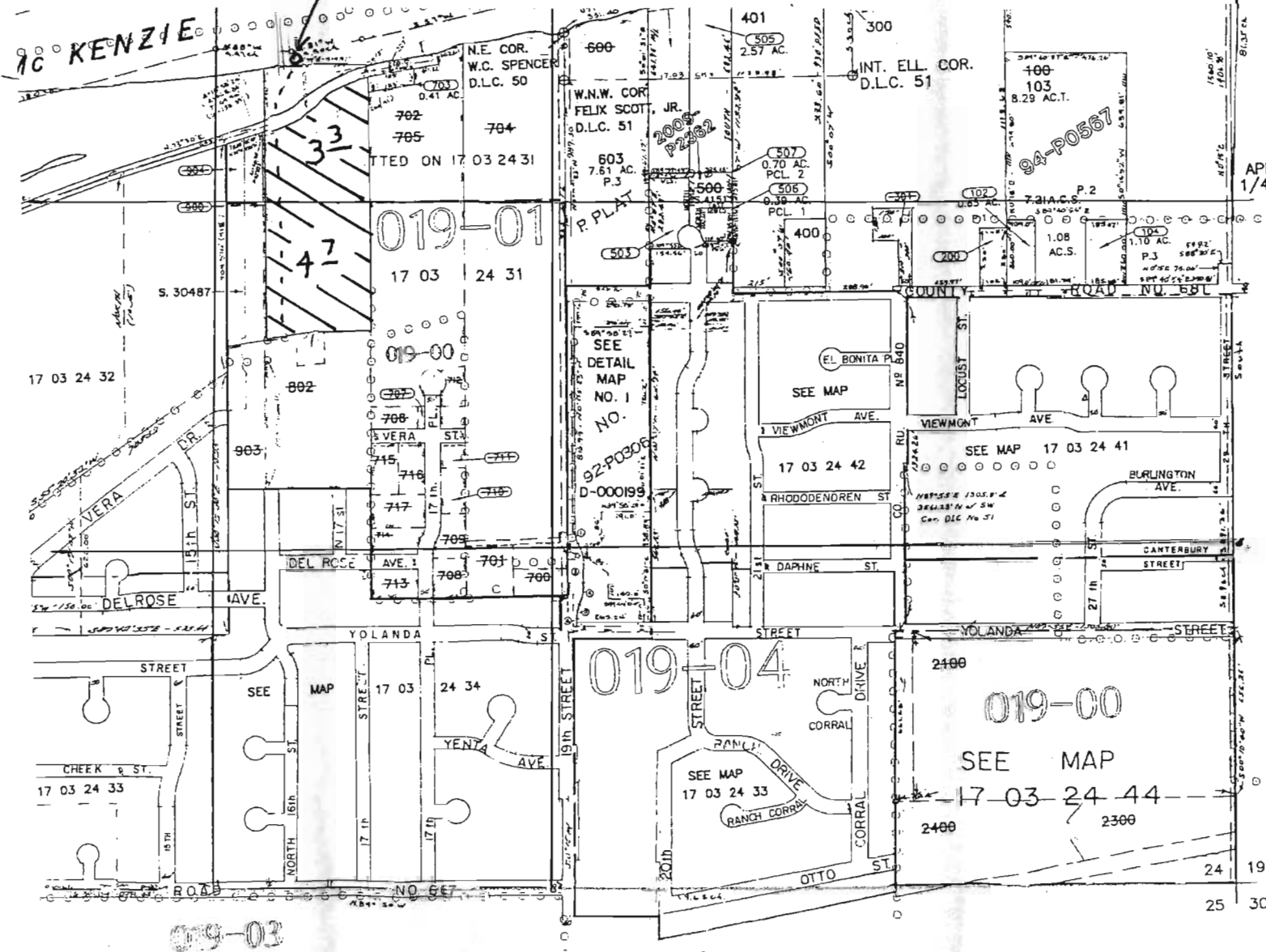
POD 90' N & 1015' E from WNW cor DLC 51

Tax lot 00400

Tax Map 170324 31

S-87674

McSivers 3289 16th, Springfield, OR 97747



↑ N ↓
1" = 600'

RECEIVED
JAN 08 2011
WATER RESOURCES DEPT
SALEM, OREGON