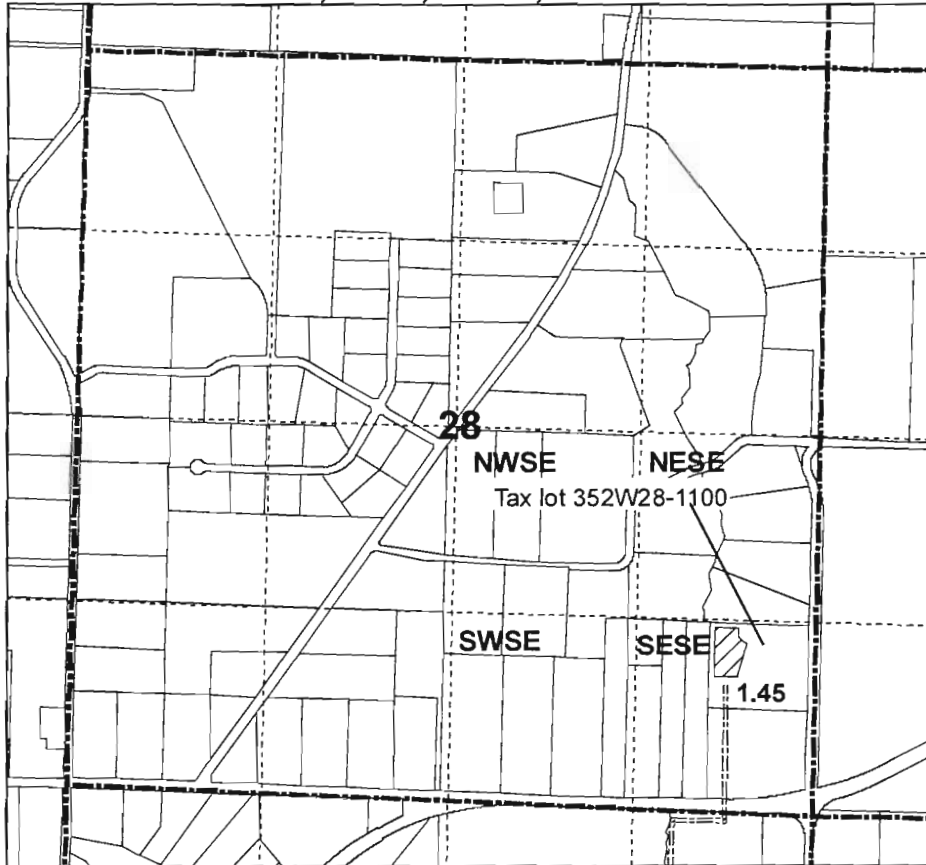

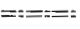





Application Map
Central Point School District #6
T 35 S, R 2 W, Sec 28, W.M.
Tax Lot 352W28-1100

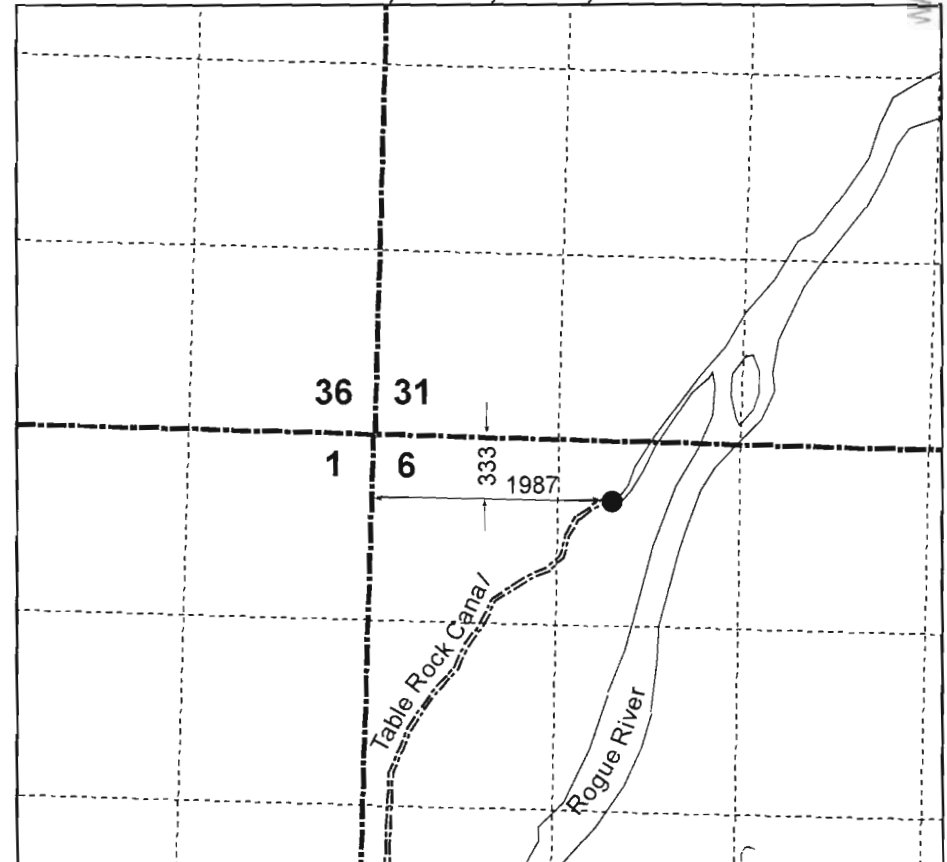
Place of Use
T 35 S, R 2 W, Sec 28, W.M.



Legend

-  Area to be irrigated
-  School owned pipeline
-  RR Ranch pipeline
-  Section line
-  Quarter-quarter line

Point of Diversion from Rogue River
T 36 S, R 1 W, Sec 6, W.M.



RECEIVED

JAN 07 2011

WATER RESOURCES DEPT
SALEM, OREGON



1 inch equals 1,320 feet

RECEIVED

DEC 13 2010

WATER RESOURCES DEPT
SALEM, OREGON