

S.W.1/4 S.W.1/4 SEC.21 T.17S. R.2W. W.M.  
Lane County  
1" = 100'

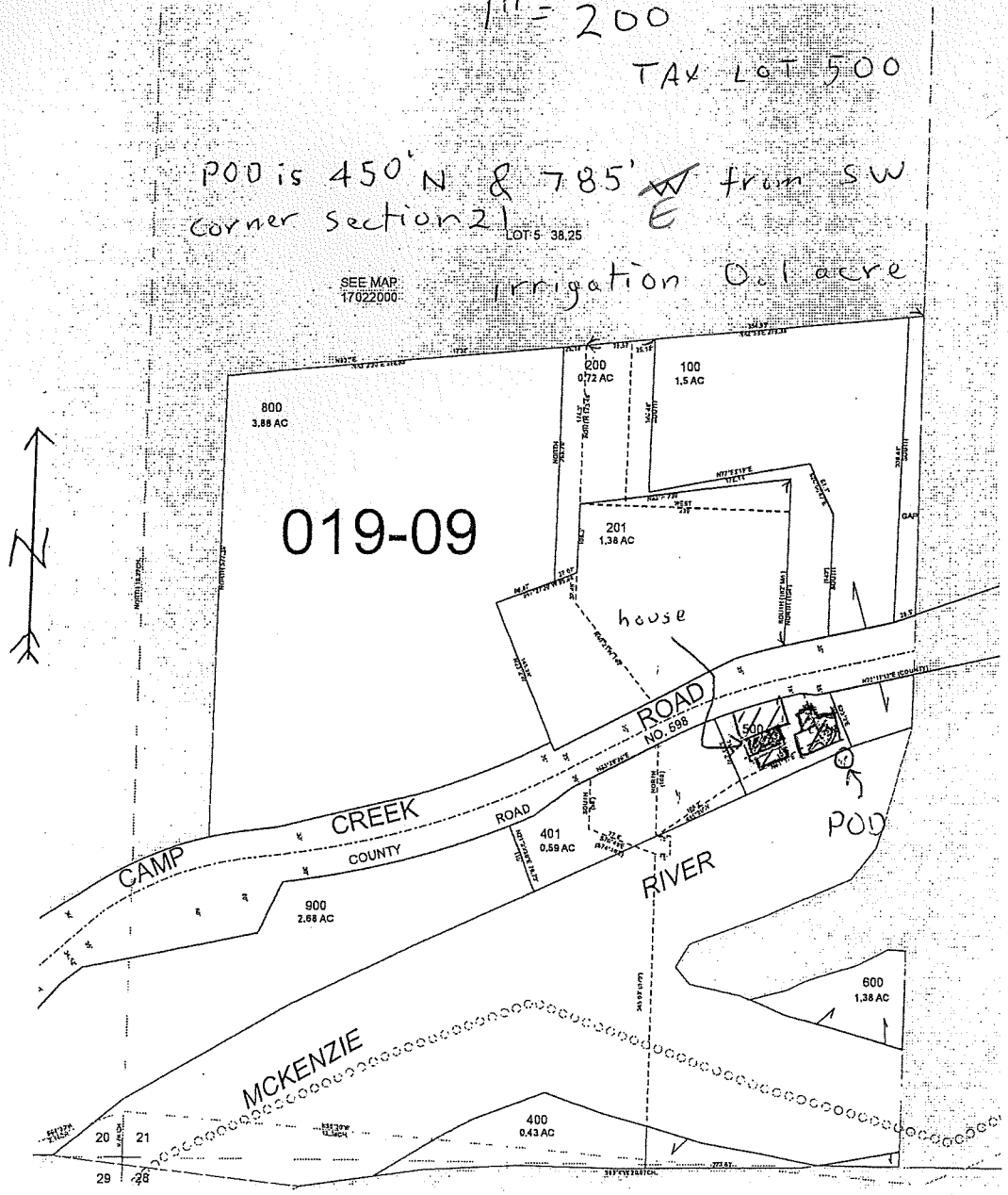
1" = 200'

TAX LOT 500

POD is 450' N & 785' W from SW corner section 21

SEE MAP 17022000

irrigation 0.1 acre



RECEIVED

JAN 18 2011

WATER RESOURCES DEPT  
SALEM, OREGON

RECEIVED

DEC 29 2010

WATER RESOURCES DEPT  
SALEM, OREGON

App S-87672