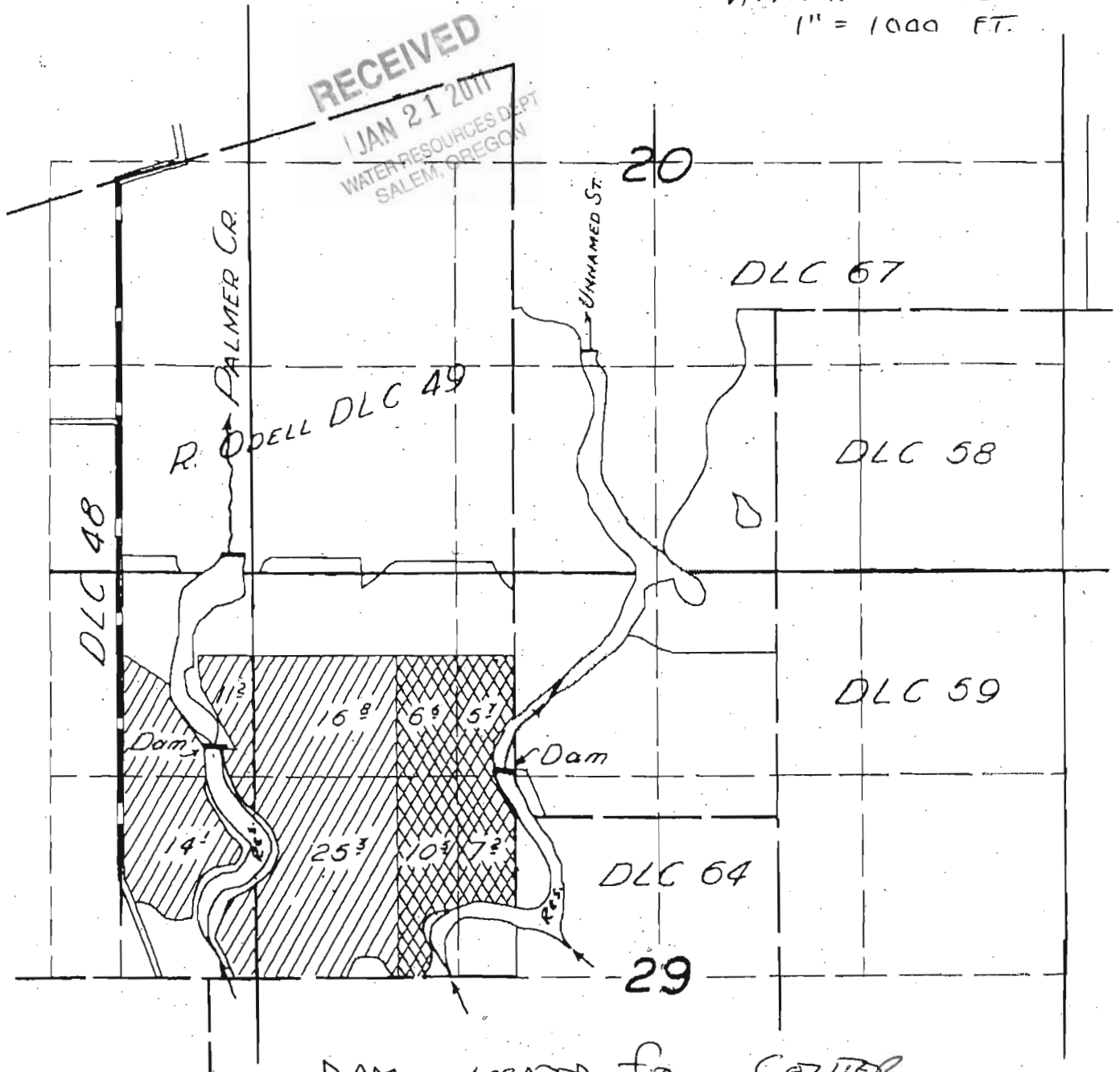


T. 5 S. R. 3 W. W.M.

CORRECTED ADJUSTED
APPROX SCALE
1" = 1000 FT.



RECEIVED
JAN 21 2011
WATER RESOURCES DEPT
SALEM, OREGON

DAM LOCATED FROM CENTER
SECTION 20

B.T. Jan 21/2011

1215 FE SOUTH
425 FE WEST

R-87683

SECTION 29 T5S R3W W.M.
YAMHILL COUNTY

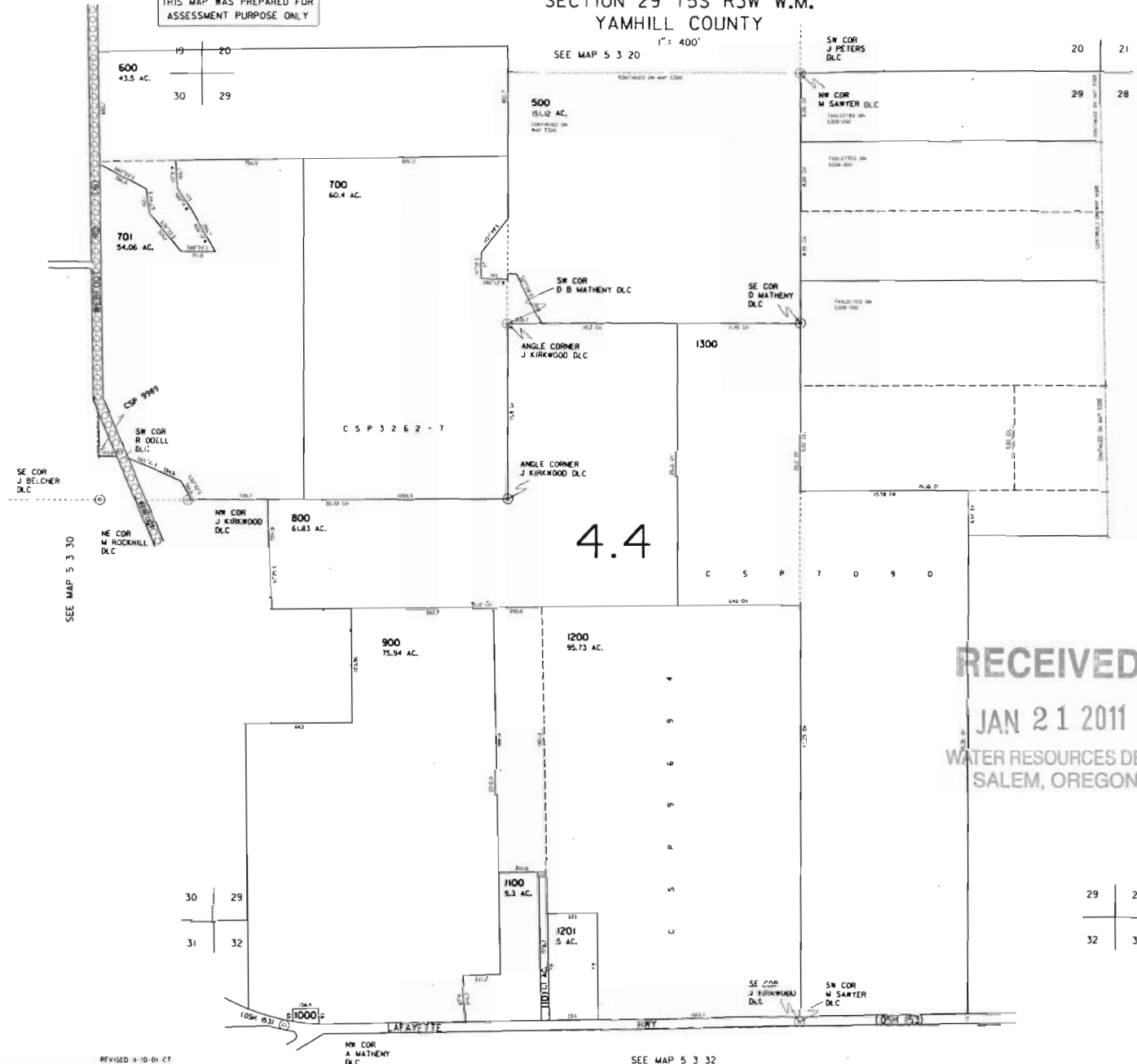
5 3 29

THIS MAP WAS PREPARED FOR
ASSESSMENT PURPOSE ONLY

1" = 400'

SEE MAP 5 3 20

CANCELLED
100 ***
200 ***
300 ***
400 **



R-8-10003

SEE MAP 5 3 30

SEE MAP 5 3 28

RECEIVED
JAN 21 2011
WATER RESOURCES DEPT
SALEM, OREGON

REVISED 4-10-01 CT

SEE MAP 5 3 32

5 3 29

THIS MAP WAS PREPARED FOR
ASSESSMENT PURPOSE ONLY

SECTION 20 T5S R3W W.M.
YAMHILL COUNTY

5 3 20

1" = 400'

SEE MAP 5 3 17

CANCELLED
1100

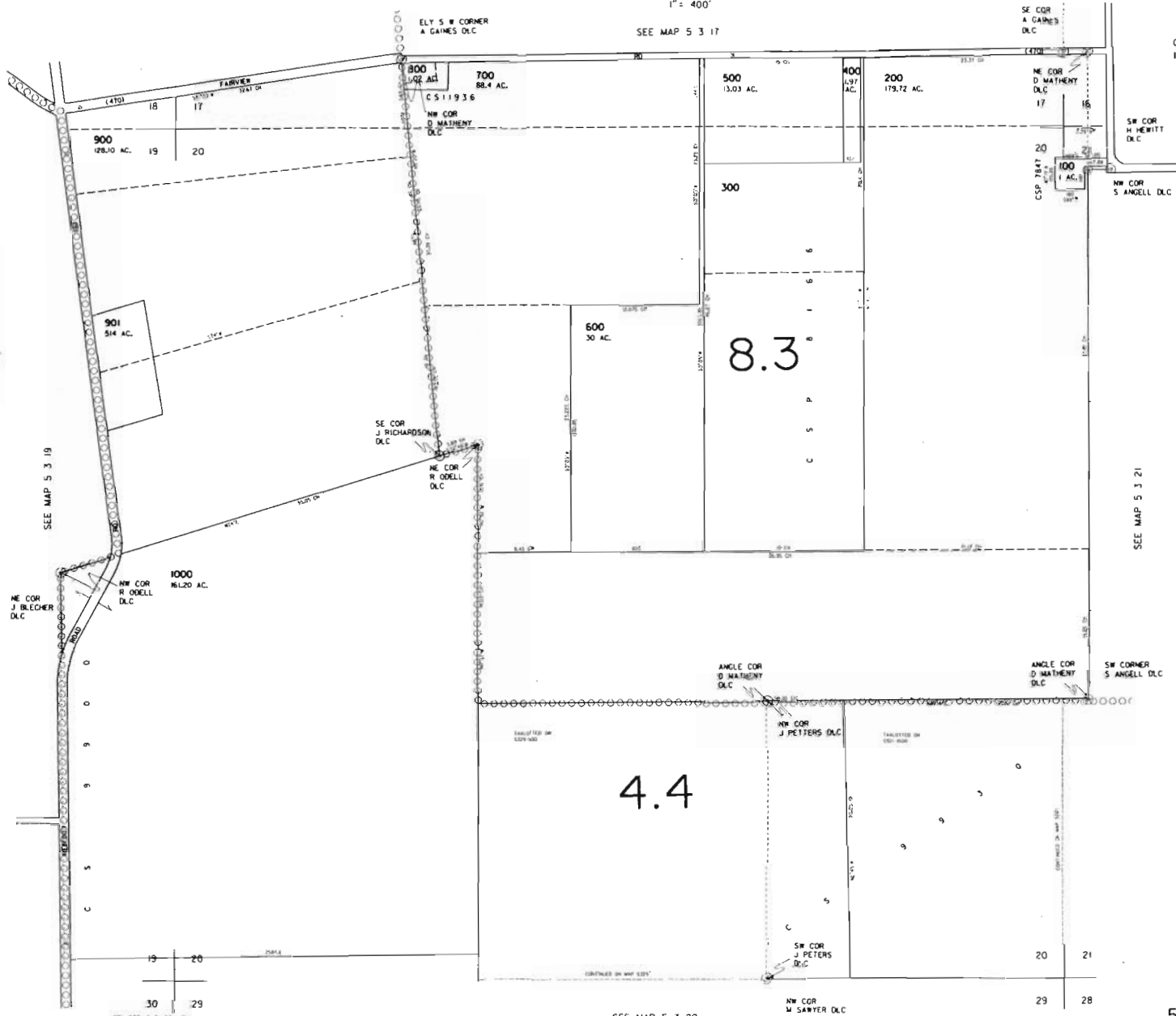
SEE MAP 5 3 21

SEE MAP 5 3 29

5 3 20

RECEIVED

JAN 21 2011
WATER RESOURCES DEPT
SALEM, OREGON



R. B. Peters