

WATER



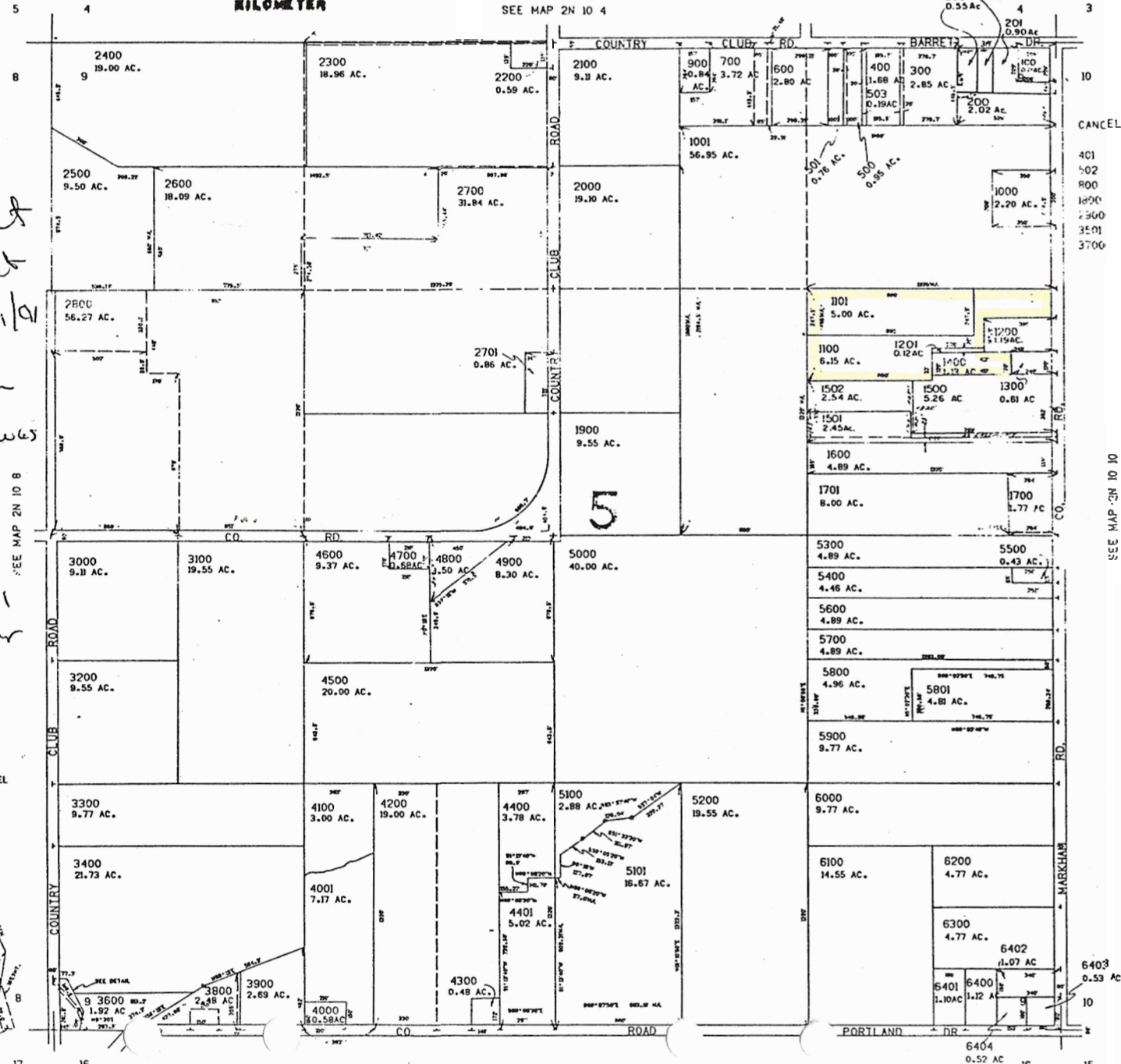
SCALE 1"=400' SECTION 2N. R.10E. W.1
HOOD RIVER COUNTY

THIS MAP WAS PREPARED FOR
ASSESSMENT PURPOSE ONLY.



SEE MAP 2N 10 4

When statement
of water right
filled out 6/21/01
for Chet. Johnson
water right was
split as 3⁰⁰ ac
to 1101 and
7⁰⁰ ac to 1100, 1201
& 1400. No water
rights on 1200
and 1300.

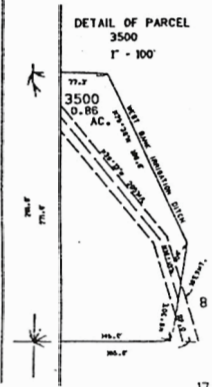


CANCELLED NO.'S

- 401
- 502
- 800
- 1800
- 2900
- 3501
- 3700

SEE MAP 2N 10 10

DETAIL OF PARCEL
3500
1" = 100'



LMT

4747