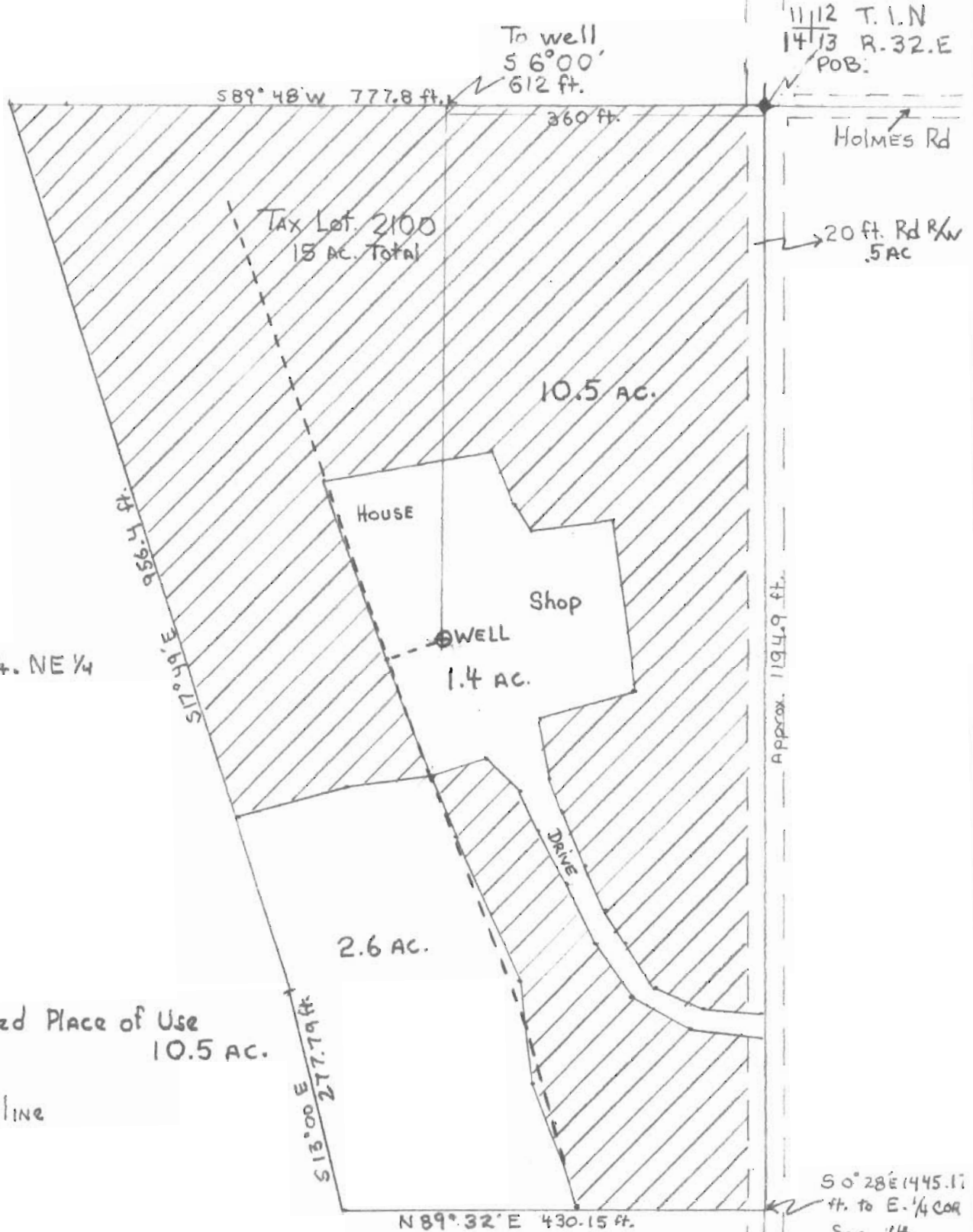


Patrick + Sarah West



Sec. 14 NE 1/4. NE 1/4

### Legend

Proposed Place of Use 10.5 AC.

Well

2" mainline



1" = 150 ft.

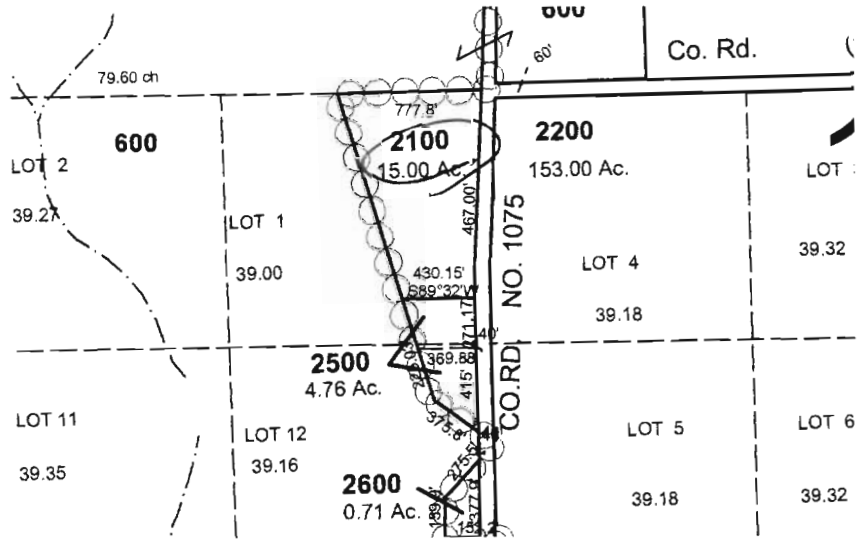
G-17457

**RECEIVED**

APR 01 2011

WATER RESOURCES DEPT  
SALEM, OREGON

17447



**RECEIVED**  
 APR 01 2011  
 WATER RESOURCES DEPT  
 SALEM, OREGON

ick + Sarah West

CORRECTED ADJUSTED  
APPROX SCALE  
1" = 100 FEET

11112 T. 1. N  
14113 R. 32. E  
POB:

To well  
56°00'  
612 ft.

589°48'W 777.8 ft.

360 ft.

Holmes Rd



Tax Lot 2100  
15 AC. TOTAL

20 ft. Rd R/W  
5 AC

WORK  
COPY

10.5 AC.



HOUSE

Shop

WELL

1.4 AC.

NE 1/4

956.4 ft.

S17°04'E

Approx 1194.9 ft.

2.6 AC.

DRIVE

Place of Use  
10.5 AC.

S13°00'E  
277.79 ft.

N89°32'E 430.15 ft.

S0°28'E 1445.11  
ft. to E. 1/4 COR  
Sec. 14.

G-17457