

DN 18 T.17S. R.5W. W.M.

Lane County

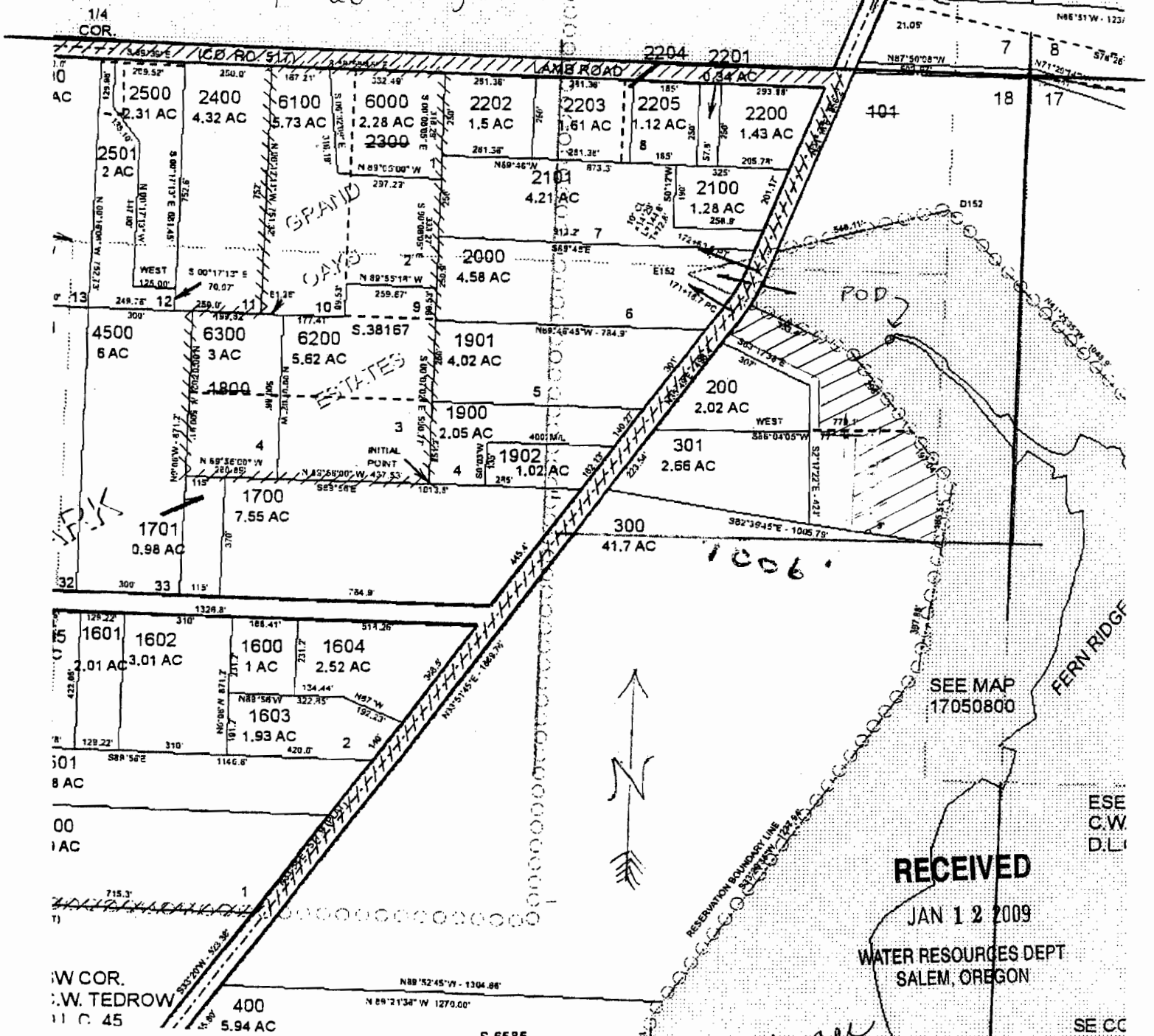
1" = 400'

TL 201

NE 1/4 NE 1/4 Sec 18

4.0 ac irrigation

POD  
760 ft Southward  
385 ft West  
of NE corner  
section 18



**RECEIVED**  
 APR 04 2011  
 WATER RESOURCES DEPT  
 SALEM, OREGON

Corrected Adjusted  
 APPROX. SCALE  
 1" = 400 FEET  
 S-8770

I agree  
 Beverly  
 Marshall  
 1-15-09

**RECEIVED**  
 JAN 12 2009  
 WATER RESOURCES DEPT  
 SALEM, OREGON

ESE  
 C.W.  
 D.L.  
 SEE MAP  
 17050800  
 SE CC  
 C.W.T

DN 18 T.17S. R.5W. W.M.

Lane County

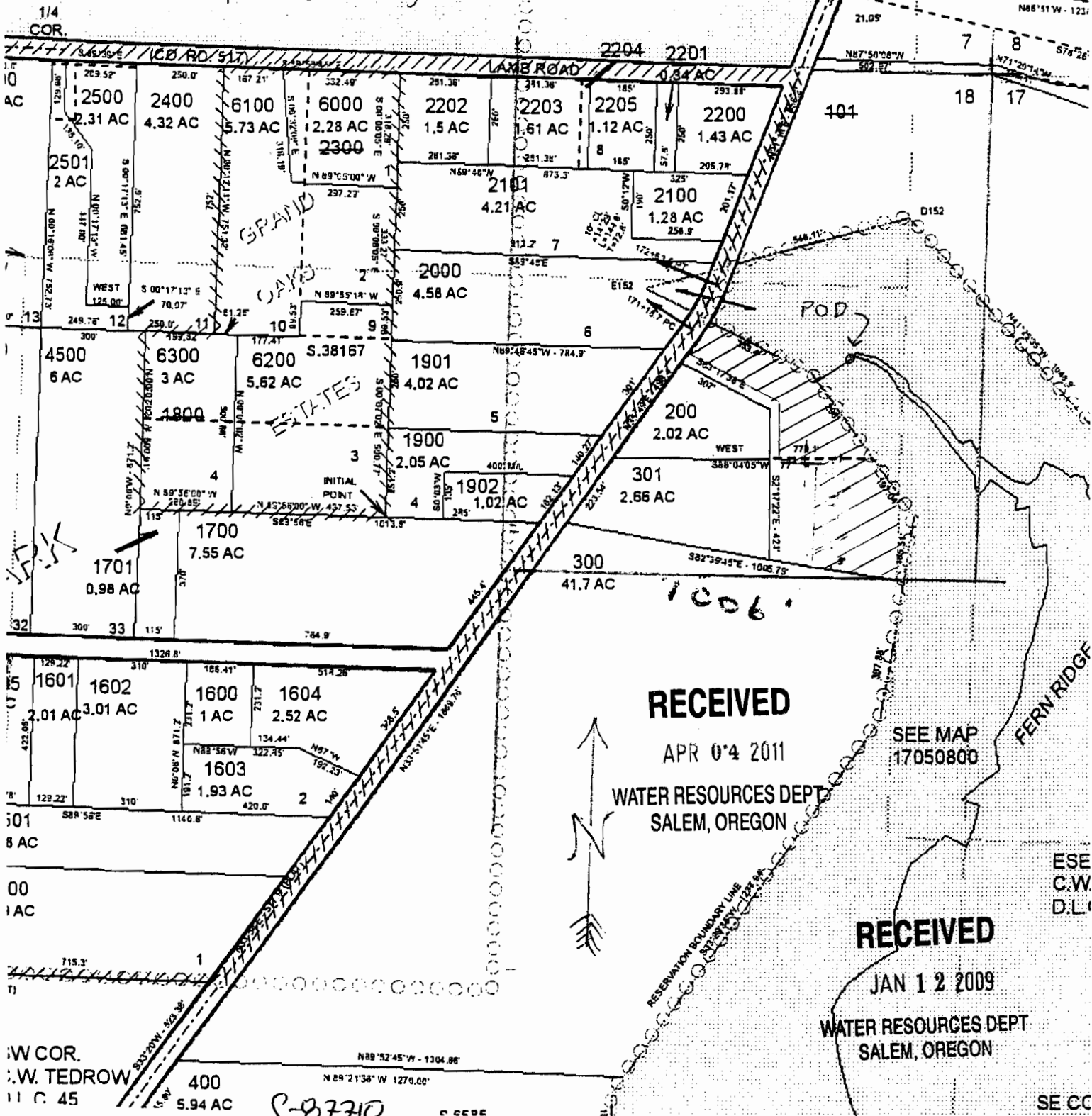
1" = 400'

TL 201

NE 1/4 NE 1/4 Sec 18

4.0 ac irrigation

POD  
825 ft Southward  
395 ft West  
of NE corner  
section 18



RECEIVED

APR 04 2011

WATER RESOURCES DEPT  
SALEM, OREGON

SEE MAP  
17050800

RECEIVED

JAN 12 2009

WATER RESOURCES DEPT  
SALEM, OREGON

1/4 COR.  
S.W. COR.  
S.W. TEDROW  
11 C. 45

400  
5.94 AC

S-87710

ESE  
C.W.  
D.L.

SE CC  
C.W. T