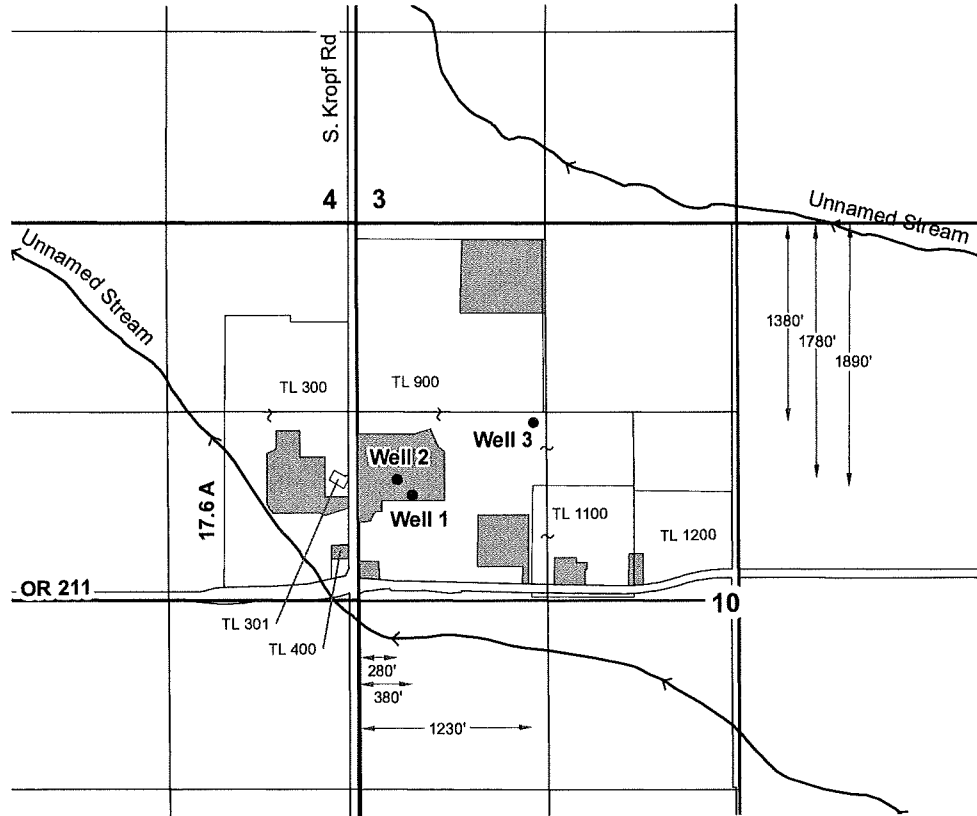


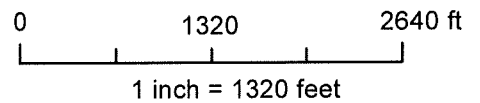
Township 5S, Range 1E, Sections 9 & 10 Clackamas County



RECEIVED BY OWRD

OCT 12 2012

SALEM, OR



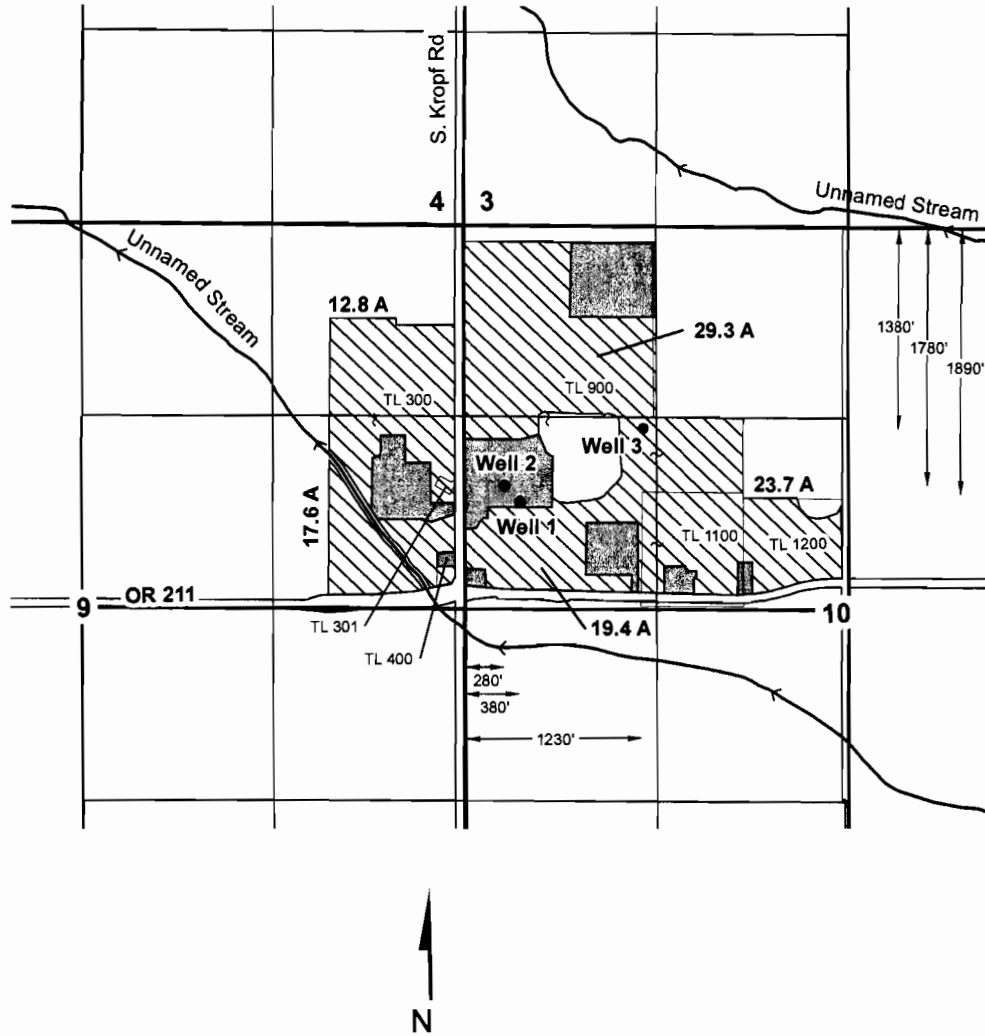
Explanation

- Proposed Wells
- ▨ Proposed Commercial / Industrial Use

THIS MAP IS NOT INTENDED TO
PROVIDE LEGAL DIMENSIONS
OR LOCATIONS OF PROPERTY
OWNERSHIP LINES

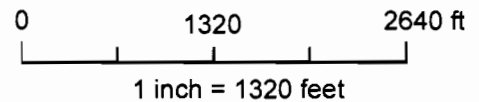
Amended Groundwater Use Application Map Willamette Egg Farms, LLC		Figure 1
Geosyntec consultants		
Portland, OR	10-Oct-2012	

Township 5S, Range 1E, Sections 9 & 10 Clackamas County



Explanation

- Proposed Wells
- ▨ Proposed Land Application (Irrigation) 102.8 acres
- ▨ Proposed Commercial / Industrial Use



THIS MAP IS NOT INTENDED TO
PROVIDE LEGAL DIMENSIONS
OR LOCATIONS OF PROPERTY
OWNERSHIP LINES

Q-17461

Groundwater Use Application Map

Willamette Egg Farms, LLC

Geosyntec[®]
consultants

SKOOKUM
WATER ASSOCIATES INC

Figure

Portland, OR

18-Apr-2011

1

This map was prepared for assessment purpose only.

SECTION 9 T.5S. R.1E.W.M.
CLACKAMAS COUNTY

1" = 400'

SEE MAP 5 IE 4

Hwy 170

This map was prepared for assessment purpose only.

SECTION 10 T.5S. R.1E.W.M.
CLACKAMAS COUNTY

1" = 400'

SEE MAP 5 IE 3

G-17461

86-36

P.P. 1994-97

35-35

EFU

EFU

