

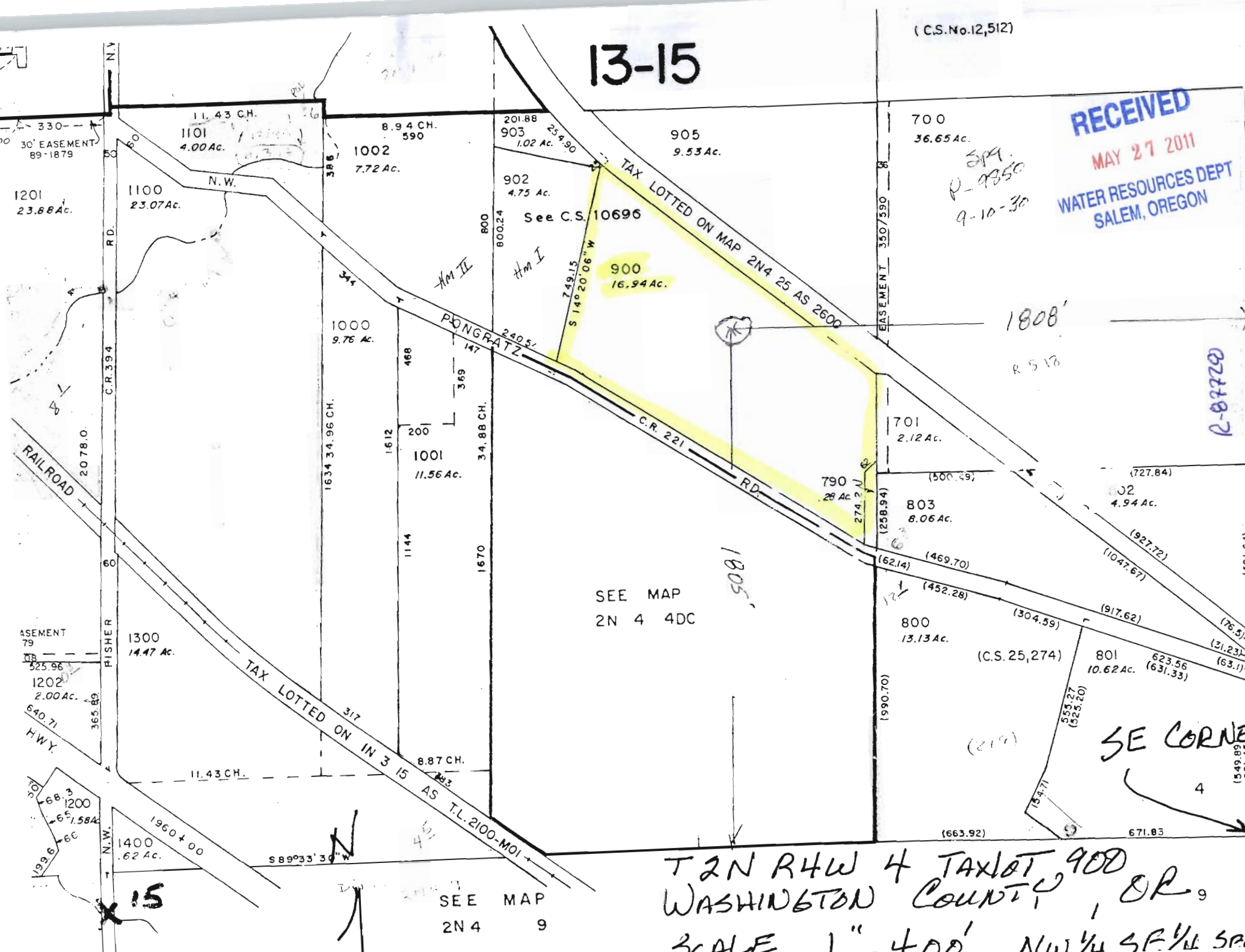
13-15

(C.S.No.12,512)

RECEIVED
MAY 27 2011
WATER RESOURCES DEPT
SALEM, OREGON

SPR.
P-9850
9-10-30

0270-2



T 2N R 4W 4 TAX LOT 900
WASHINGTON COUNTY, OR
SCALE 1" = 400' NAD 83 S.F. 1/4 SEC